

Log of Boring No. BRC-SB-10-C

BMI Site - Hydrogeologic Characterization

Henderson, Nevada



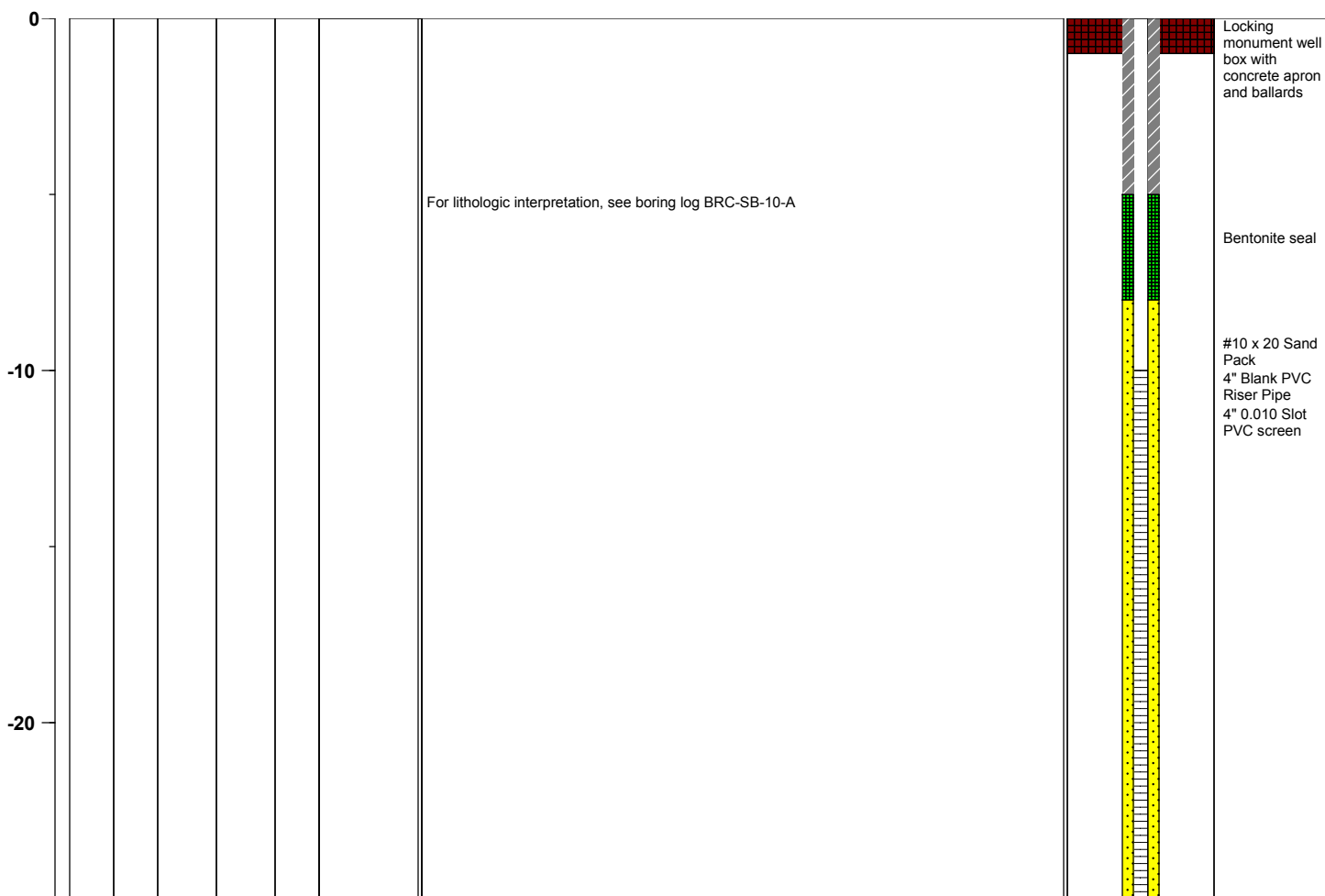
Drilling Method: Sonic
Drilling Equipment: Rotary Sonic
Drilling Contractor: ProSonic
Driller: ProSonic

Borehole Total Depth: 47 ft bgs
Borehole Diameter: 8.5 in
Boring Location: Location 10 (Well ID: AA-10)
Depth to Water (ft. bgs): NA

Sample Type: N/A
Sample Interval: Cont.
Logged By: Adam Norris
Date Started: 06/16/04
Date Completed: 06/16/04

Monitoring Well Construction			
Type of Surface Seal:	Bentonite-Grout	Screen Slot Size:	0.010 in
Blank Casing Type/Size:	4" Sch 80 PVC	Top of Screen (ft. bgs):	10 ft bgs
Screen Type/Size:	4" Sch 80 PVC	Bottom of Screen (ft. bgs):	40 ft bgs
Transition Sand Type:	N/A	Type of Sand Pack:	#2 x 12

Depth Elevation (MSLD)	Sample Type	Sample Interval	Sample Recovery (feet)	Sample Retained for Analysis	PID	Lithology	Soil Description	Well Construction
---------------------------	-------------	-----------------	---------------------------	---------------------------------	-----	-----------	------------------	-------------------



Project No. 3850360

Log of Boring: BRC-SB-10-C



Log of Boring No. BRC-SB-10-C

Depth Elevation (MSLD)	Sample Type	Sample Interval	Sample Recovery (feet)	Sample Retained for Analysis	PID	Lithology	Soil Description	Well Construction
---------------------------	-------------	-----------------	---------------------------	---------------------------------	-----	-----------	------------------	-------------------

Well log diagram for Borehole BRC-SB-10-A. The vertical axis on the left indicates depth in feet, with labels at -30 and -40. The central area contains the text: "For lithologic interpretation, see boring log BRC-SB-10-A". The right-hand column shows the well construction materials, which are divided into three sections: a top section of yellow material with black dots labeled "#10 x 20 Sand Pack", a middle section of white material with black dots labeled "Threaded PVC Well Base Cap", and a bottom section of green material with black dots labeled "Cement Backfill".