



DAILY PRODUCTION & QUALITY CONTROL REPORT

Project No./Contract No.	Project Title / Location	Day of Report	Report No.
6389	BRC Eastside Common Areas Soils Remediation	28-Feb-09	230

PROJECT POINTS OF CONTACT

Position	Name	E-Mail Address	Phone No.
BRC PROJECT MANAGER	Lee Farris	lfarris@landwelco.com	702-567-0400
BRC PROJECT MANAGER	Ranjit Sahu	sahuron@earthlink.net	702-567-0400
CONST. PROJECT MANAGER	Dan Brennecke	Dan.Brennecke@westonsolutions.com	970-260-5886
Construction Manager	Richard Laubinger	Richard.Laubinger@westonsolutions.com	720-641-8660

WEATHER CONDITIONS

Conditions		Temp (F)	Wind	Ad#1 Readings
AM	Sunny/Clear	Low 49		Precip. (inches)
PM	Sunny / Partly Cloudy	High 68	NNE 10mph	Humidity (%)

Additional Weather Comments:
Winds in PM 5 - 10 mph.

ON-SITE WESTON PERSONNEL

Name	Position	Trade / Work Performed	Y/N
Dick Laubinger	Construction Manager	Construction Management Services.	Y
Dan Brennecke	Project Manager, CM	Construction Management Services.	N
Richard Davis	Project Engineer	Construction Management Services.	N
Chris White	Assist. Const. Mgr	Construction Management Services.	Y
Wayne Hodgson	Assist. Const. Mgr	Construction Management Services.	N
Kevin Cooke	Assist. Const. Mgr	Construction Management Services.	N
June Laubinger	Admin Assistant	Construction Management Services.	N

ON-SITE GEOSYNTEC PERSONNEL

Name	Position	Trade / Work Performed	Y/N
Greg Corcoran	Design Engineer	Oversight	N
Dan Street	QA Manager	Oversight	Y
Jim Cox	QA/QC Supervisor	Oversight	N
Rebecca Flynn	Engineer	Oversight	N
Sam Campbell-Nelson	QA/QC Tech	Oversight	Y
Roland Derosier	QA/QC Tech	Oversight	Y
Canon Liddell	QA/QC Tech	Oversight	Y
Jeremy Osborn	QA/QC Tech	Oversight	N
Victor Heredia	QA/QC Tech	Oversight	Y

ON-SITE SUPPORT PERSONNEL

Name	Position	Trade / Work Performed	Y/N
Doug Herlocker, Tetra Tech	Air Monitoring Specialist	Air Monitoring	N
Becky Dano, Tetra Tech	Air Monitoring Specialist	Air Monitoring	Y
Jerry Fauchoux, Tetra Tech	Air Monitoring Specialist	Air Monitoring	N

OVERSITE PERSONNEL

Name	Position	Trade / Work Performed	Y/N
Mark Eizman, ASW	Inspector	Liner Inspector	N
Devin Gordon, McGinley	Oversight	For NDEP	N
Dock Kim, ATC	Field Observation	For AIG	N
Joe Ludlow, ASW	Inspector	Liner Inspector	N
Steve Morrow, ASW	Inspector	Liner Inspector	N
Brian Rakvica	Inspector	NDEP	N
PBS&J, Survey	Surveyors	Survey	N

ON-SITE CONTRACTOR PERSONNEL

Name	Company	Trade / Work Performed	Y/N
Erik Geringer	Entact	Project Manager	N
Jeremy Schissler	Entact	Acting Project Manager	Y
Josh Carroll	Entact	Asst Project Manager	Y
Michael Carlson	Entact	Engineer	Y
Joe Curila	Entact	Health & Safety Officer	Y
Timothy Stadt	Entact	Health and Safety Technician	Y
Ed Long	Entact	48 Equipment Operators & Truck Drivers	Y
Lance Bruce	Entact	CAMU, Superintendent	N
Terry Harper	Entact	Health & Safety Officer	N
Rick McIntire	Entact	CAMU, Superintendent	N
Dale Walsh	Entact	CSP, Safety	N
Eli Blackburn	Entact	CSP, Safety	Y
	Environmental Specialties, Inc	Asst Project Manager	N
	Environmental Specialties, Inc	1 Liner Superintendent	N
	Environmental Specialties, Inc	12 Laborers/ Seamers	N
Carol McIntire	Entact	Health & Safety Officer	N
Roger Wagner	Entact	Eastside, Superintendent, Night Shift.	Y
	ABC Survey	Eastside/CAMU, Mohawk Drive.	N
	Foundation Pile, Inc.	Demobilized.	N

ON-SITE EQUIPMENT

Equipment	Vendor / Tag No.	Work Performed				
CAT D400E Dump Truck (10)		CAMU	-	-	-	-
JD D400 Dump Trucks (8)		Eastside	-	-	-	-
CAT 324D long stick excavator		Eastside	-	-	-	-
CAT D8R Dozer with disc		Eastside	-	-	-	-
CAT 345 excavators, (5)		Eastside and CAMU	-	-	-	-
CAT S30 Excavator		CAMU	-	-	-	-
Casa double pan scrapers.		Eastside, demobilized.	-	-	-	-
CAT D6 LGP Dozer (1)		Eastside	-	-	-	-
Water Trucks (2)		Eastside	-	-	-	-
JD450 Dozer		CAMU	-	-	-	-
CAT 16H Grader		CAMU	-	-	-	-
CAT D-10 Dozer		CAMU	-	-	-	-
Water Trucks (2)		CAMU	-	-	-	-
CAT D-6 Dozer, (2)		CAMU	-	-	-	-
CAT 14H Grader		CAMU	-	-	-	-
Gradall		CAMU	-	-	-	-
JLG		CAMU	-	-	-	-
IR Smooth drum Roller		CAMU, Phase 1	-	-	-	-
Tenent Street Sweeper		Eastside and CAMU	-	-	-	-
Bomag Smooth drum Roller		CAMU, Phase 1	-	-	-	-
Chioffain 1400 Powerscreener		Eastside, screening 1" & 6" minus	-	-	-	-
(1) Crane		Sheet pile driving, Installed, (1)Crane remains.	-	-	-	-

MATERIAL HANDLING (ON-SITE DELIVERY / REMOVAL)

Material	Vendor	Today	UOM	Purpose	Delivery To date	Verification City	Spore	Tags
GCL	CETCO	0	rolls	For CAMU, On site			1091	

DAILY PRODUCTION & QUALITY CONTROL REPORT

Project No./Contract No.	Project Title / Location	Day of Report	Report No.
6389	BRC Eastside Common Areas Soils Remediation	28-Feb-09	230

Geocomposite	Agru	0	rolls	For CAMU, On site	2292
Geomembrane	Agru	0	rolls	For CAMU, On site	448

WORK COMPLETED

Phase I Work Executed Today

Eastside Mixing and Drying Activity:

Day Shift:

- PUC-3 remediation of north berm south face to vertical, also scraping top of berm.
- PUD-4, continue screening for operations layer.
- SW-2 continue mixing materials
- HP-2, stockpiling material for loadout with longstick excavator.

Night Shift:

- No Activity.

CAMU Activity:

Day Shift:

- Continued grading N. BMI Landfill.
- Continued excavating NW-2, waste continues to be trash and paper products. Activated pyrophoric substances, periodically.
- Continued excavating NW-3 second excavator, waste consists of gravel and debris.
- Continued the installation of 42" RCP storm drain system.
- Phase IIIA, continued placing operations layer.

Night Shift:

- No Activity.

Embankment

- Phase I embankment, complete.
- Phase I estimated cummulative embankment placed: 0 cy
- Phase II embankment, complete.

Other:

Inspections: Slit trenches, NW-2, Waste continues to be trash and paper products with soils. Also pyrophoric substances, periodically.
NW-3, Waste continued to be debris and gravel.

Estimated Waste Placement (Estimated volumes do not account for shrinkage due to loss of moisture on wet ponds)

Phase I

Previous Daily Cumulative =	291,200	cy
Operations layer placed (completed) for liner certification. = 21,662	0	cy
Daily Day shift waste placed today: Phase IV,V scape & Phase IIIB trench excavation. 0 loads @ 20 cy/load (0 trucks) =	0	cy
Daily Night shift placed today: 0 loads @ 18cy/load (0 trucks) =	0	cy
To Date Phase I estimated cummulative waste placed =	291,200	cy

Phase II

Previous Daily Cumulative =	331,664	cy
Operations layer placed (completed) for liner certification. = 37,188	0	cy
Daily Day shift waste placed today: Phase IIIB (0) loads @ 18 cy/load (0) trucks =	0	cy
Daily Day shift waste placed today: Slit Trenches, (49) loads @ 18cy/load (3) trucks =	882	cy
Daily Night shift placed today: (0) loads @ 18cy/load (0) trucks =	0	cy
To Date Phase II estimated cummulative waste placed =	332,546	cy

Phase IIIA

Previous Daily Cumulative =	11,862	cy
Operations layer placed directly in Phase IIIA today: (0) loads @ 18 cy/load (0) trucks =	0	cy
Operations layer staged in Phase IIIA for day placement (ongoing) for liner certification: (0) loads @ 18 cy/load (0) trucks =	0	cy
Daily Day shift waste placed today: (0) loads @ 18 cy/load (0) trucks =	0	cy
Daily Night shift waste placed today: (0) loads @ 18cy/load (0) trucks =	0	cy
To Date Phase IIIA estimated cummulative waste placed =	11,862	cy

Cummulative Total To Date All Phases =	635,608	cy	Estimated Waste at Completion (cy)	2,050,000	% Complete	31.0%
---	----------------	-----------	---	------------------	-------------------	--------------

Geosynthetics Placed

Phase (complete)	Previous	Placed	Cummulative
Phase I (complete)			
GCL	307,372	0	307,372
Geomembrane	307,372	0	307,372
Geocomposite	307,372	0	307,372
Geotextile	69,340	0	69,340
Phase II (complete)			
GCL	498,468	0	498,468
Geomembrane	498,468	0	498,468
Geocomposite	520,592	0	520,592
Geotextile	0	0	0
Phase IIIA			
GCL	221,000	0	221,000
Geomembrane	221,000	0	221,000
Geocomposite	221,000	0	221,000
Geotextile	20,000	0	20,000
Phase IIIB			
GCL	0	0	0
Geomembrane	0	0	0
Geocomposite	0	0	0
Geotextile	0	0	0
Phase IV			
GCL	0	0	0
Geomembrane	0	0	0
Geocomposite	0	0	0
Geotextile	0	0	0
Phase V			
GCL	0	0	0
Geomembrane	0	0	0
Geocomposite	0	0	0
Geotextile	0	0	0

DAILY PRODUCTION & QUALITY CONTROL REPORT

Project No. / Contract No.	Project Title / Location	Day of Report	Report No.
6389	BRC Eastside Common Areas Soils Remediation	28-Feb-09	230

BMI North

GCL	1,111,468	0	1,111,468
Geomembrane	1,111,468	0	1,111,468
Geocomposite	1,111,468	0	1,111,468

BMI South

GCL	0	0	0
Geomembrane	0	0	0
Geocomposite	0	0	0

Debris Storage Area (complete)

Geomembrane	12,000	0	12,000
-------------	--------	---	--------

CAMU Cover

GCL	0	0	0
Geomembrane	0	0	0
Geocomposite	0	0	0

	Total Geosynthetics for CAMU Basic Scope (sf)	% Complete of Basic Scope	Total Geosynthetics for CAMU Basic Scope + Option Scope	% Complete of Basic Scope + Option Scope
Geosynthetic System Cumulative Total To Date All CAMU	2,138,308	4,151,232	51.5%	6,534,075

HEALTH & SAFETY

Description of Health & Safety Activities Taken Today - Safety Inspections Conducted

Safety Topic:
 Eastside Day: Discussed not becoming complacent because it is Saturday. Also be careful with gambling in Las Vegas.
 CAMU Day: Discussed not becoming complacent because it is Saturday. Also be careful with gambling in Las Vegas.
 CAMU & Eastside Night Shift: No Work.

CONSTRUCTION QUALITY ASSURANCE & QUALITY CONTROL

Description of Quality Control Activities Taken Today - Quality Inspections Conducted

Daily COA Summary:
 Monitor waste placement into Phase II Landfill during the day shift.
 Monitor the placement of operational fill in Phase IIIA.
 Monitor the installation of FRCP storm drain piping system at the CAMU.
 Continue review of and updating of project documents and database to facilitate reporting.

ISSUES AND/OR ITEMS OF DISCUSSION

Description of Issues / Comments / Discussions / Topics

Entact concluded work at 2:30 pm, today.

SITE VISITORS

Name	Organization	Purpose of Visit	Date	Initials

Report Prepared By / Title	Date Prepared	Signature
Richard Laubinger, Construction Manager	28-Feb-09	

Weather Table

Sunny/Clear	☀
Sunny / Partly Cloudy	☀☁
Cloudy / Partly Sunny	☁☀
Cloudy	☁
Overcast	☁☁☁
Light Rain	☔
Rain	🌧
Thunderstorms	⚡
Snow	❄

Basic Remediation Company

875 West Warm Springs Road
Henderson, Nevada 89011

DAILY PRODUCTION & QUALITY CONTROL REPORT

Project No./Contract No.	Project Title / Location	Day of Report	Report No.
6389 0	BRC Eastside Common Areas Soils Remediation 0	28-Feb-09	230

DAILY PHOTO LOG

Photo 1



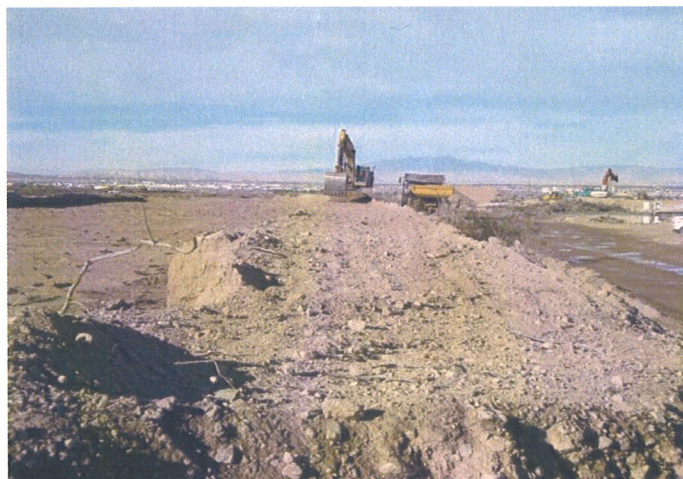
Eastside: PUC-3, Remediating Northern berm.

Photo 2



Eastside: PUA-8

Photo 3



Eastside: PUC-3. North berm.

Photo 4



CAMU: RCP storm drain pipe installation.