

Project No./Contract No.	Project Title / Location	Day of Report	Report No.
6389	BRC Eastside Common Areas Soils Remediation	09-Jan-10	536

Position	Name	E-Mail Address	Phone No.
BRC PROJECT MANAGER	Lee Farris	lfarris@landwellco.com	702-567-0400
BRC PROJECT MANAGER	Ranjit Sahu	sahuron@earthlink.net	702-567-0400
CONST. PROJECT MANAGER	Dan Brennecke	Dan.Brennecke@westonsolutions.com	970-260-8586
Construction Manager	Richard Laubinger	Richard.Laubinger@westonsolution.com	720-641-5866

Conditions				Temp (°F)		Wind		Add'l Readings	
AM	Sunny / Party Cloudy	PM	Sunny / Party Cloudy	Low	36			Precip. (in/Dy)	0
				High	58	N	5mph	Humidity (%)	0

[illegible]

Name		Position	Trade / Work Performed	Y/N
Greg Corcoran	Design Engineer	Oversight		Y
Dan Street	QA Manager	Oversight		N
Jim Cox	QA/QC Supervisor	Oversight		Y
Rebecca Flynn	Engineer	Oversight		N
Samon Littlefield	QA/QC Tech	Oversight		Y
Graciano Malina	QA/QC Tech	Oversight		Y
Victor Heredia	QA/QC Tech	Oversight		Y
John Duncan	QA/QC Tech	Oversight		Y

Name	Position	Trade / Work Performed	Y/N	
Doug Herlocker, Tetra Tech	Air Monitoring Specialist	Air Monitoring	N	
Becky Dano, Tetra Tech	Air Monitoring Specialist	Air Monitoring	Y	

Name	Position	Trade / Work Performed	Y/N
Bob Meyer, ASW	Inspector	Liner Inspector,	Y
Devin Gordon, MGA	Oversight	For NDEP	N
Brian Rakvica	Inspector	NDEP	N
Steve Morrow, ASW	Inspector	Liner Inspector	N
PBS&J, Survey	Surveyors	Survey	N

[illegible]

Equipment	Vendor / Tag No.	Work Performed			
CAT D400E Dump Truck (10)		CAMU	-	-	-
JD D400 Dump Trucks (10)		Eastside	-	-	-
CAT 324D long stick excavator		Eastside	-	-	-
CAT D8R Dozer with disc, (1)		Eastside	-	-	-
CAT 345 excavators, (8)		Eastside, CAMU and Galleria	-	-	-
CAT 330 Excavator (1)		CAMU	-	-	-
CAT 365 Excavator (1)		CAMU	-	-	-
CAT D6 LGP Dozer (1)		Eastside	-	-	-
Water Trucks (5)		Eastside	-	-	-
Case backhoe		CAMU	-	-	-
CAT 16H Grader		CAMU	-	-	-
CAT D8 Dozer		Eastside	-	-	-
Water Trucks (4)		CAMU	-	-	-
CAT D-6 Dozer, (3)		CAMU	-	-	-
CAT 14H Grader		CAMU	-	-	-
Grashtail, forklift		CAMU	-	-	-
JLG		CAMU	-	-	-
Smooth drum Rollers, (3)		CAMU	-	-	-
Tenert Street Sweeper		Eastside and CAMU	-	-	-
Komatsu Loader		CAMU and Eastside.	-	-	-
Cherlain 1400 Powerscreener		CAMU	-	-	-

Material	Vendor	Today	UOM	Purpose	Delivery Verification			
					to date	Qty	Spec	Tags
GCL	CETCO	0	rolls	For CAMU, On site		2271		
Geocomposite	Agru	0	rolls	For CAMU, On site		2442		
Geomembrane	Agru	0	rolls	For CAMU, On site		558		

Eastside Mixing and Drying Activity:

Day Shift:

- CTR-1 and CTR-4, continued excavating and stockpiling.
- SW and HP ponds continued scrape and hauling material to Beta Ditch stockpile.
- SW berms, loading out OTR trucks and transporting to CAMU for placement.
- Galleria scrape continued loading out OTR trucks from Parcel 14 and hauling to CAMU for placement.

Night Shift:

DAILY PRODUCTION & QUALITY CONTROL REPORT			
Project No./Contract No.	Project Title / Location	Day of Report	Report No.
6389	BRC Eastside Common Areas Soils Remediation	09-Jan-10	536
<div>- No Activity.</div> <div>CAMU Activity:</div> <div>- Day Shift:<ul style="list-style-type: none">- Phase V, continued placing material from Eastside and Galleria.- Phase IIIB and Phase I continued finish grading interim cover.- Phase IV, placing interim cover on slopes.- Rock crushing continued at 200,000 cy stockpile.- Phase IIIB, Phase IV and Phase V, graded waste with excavator on slopes and D6 dozer on top.- ESI liner crew, continued installing geosynthetics and performing tests on east slope at Phase I, Phase II and Phase IIIB.</div> <div>- Night Shift:<div>- No Activity.</div></div> <div>Embankment<ul style="list-style-type: none">- Phase I embankment, complete.- Phase I estimated cumulative embankment placed:- Phase II embankment , complete.</div> <div>Sump/Vadose Monitoring:<div><div>Phase I: LCRS Sump: Measurement taken: (N/A) Water Pumped: (N/A).</div><div>Vadose: Measurement taken: (N/A) Water Pumped: (N/A).</div><div>Phase II: LCRS Sump: Measurement taken: (N/A) Water Pumped: (N/A).</div><div>Vadose: Measurement taken: (N/A) Water pumped: (N/A).</div><div>Phase IIIB: LCRS Sump: Measurement taken: (N/A) Water Pumped: (N/A).</div><div>Vadose: Measurement taken: (N/A) Water Pumped: (N/A).</div><div>Phase V: LCRS Sump: Measurement taken: (N/A) Water Pumped: (N/A).</div><div>Vadose: Measurement taken: (N/A) Water pumped: (N/A).</div></div><div>Inspections: CAMU: N/A.</div><div>Fastlane: Fence reinstalled intersected all sections</div></div>			

Estimated Waste Placement (Estimated volumes do not account for shrinkage due to loss of moisture on wet ponds)

Phase I	
Previous Daily Cumulative =	372,886 cy
Operations layer placed (completed) for liner certification. = 21,662	0 cy
Daily Day shift waste placed today: Galleria/Eastside, (0) loads @ 17 cy/load (0) trucks =	cy
Daily Night shift placed today: (0) loads @ 21cy/load (0) trucks =	cy
To Date Phase I estimated cumulative waste placed =	372,886 cy
Phase II	
Previous Daily Cumulative =	1,072,405 cy
Operations layer placed (completed) for liner certification. = 37,188	cy
Daily Day shift waste placed today: Galleria Scrape, (0) loads @ 17 cy/load (0) trucks =	cy
Daily Day shift waste placed today: Eastside Waste, (0) loads @ 17cy/load (0) trucks =	cy
Daily Night shift placed today: (0) loads @ 21 cy/load (0) trucks =	cy
To Date Phase II estimated cumulative waste placed =	1,072,405 cy
Phase IIIA	
Previous Daily Cumulative =	222,174 cy
Operations layer placed directly in Phase IIIA today: (0) loads @ 18 cy/load (0) trucks =	cy
Operations layer placed (completed for liner certification = 21,276)	cy
Daily Day shift waste placed today: (0) loads @ 17 cy/load (0) trucks =	cy
Daily Night shift waste placed today: (0) loads @ 21cy/load (0) trucks =	cy
To Date Phase IIIA estimated cumulative waste placed =	222,174 cy
Phase IIIB	
Previous Daily Cumulative =	439,547 cy
Operations layer placed (completed) for liner certification. = 21,978	cy
Daily Day shift waste placed from: Galleria/Eastside (0) loads @ 17 cy/d (0) trucks =	cy
Daily Night shift waste placed today: (0) loads @ 21cy/load (0) trucks =	cy
To Date Phase IIIB estimated cumulative waste placed =	439,547 cy
Phase IV	
Previous Daily Cumulative =	414,884 cy
Operations layer placed (completed) for liner certification = 37,314	cy
Daily Day shift waste placed today: (0) loads @ 17 cy/load (0) trucks =	cy
Daily Night shift waste placed today: (0) loads @ 21cy/load (0) trucks =	cy
To Date Phase IV estimated cumulative waste placed =	414,884 cy
Phase V	
Previous Daily Cumulative =	287,454 cy
Operations layer placed (completed) for liner certification = 40,284	cy
Daily Day shift waste placed from: Eastside and Galleria (183) loads @ 17 cy/load (12) trucks =	3,111 cy
Daily Night shift waste placed today: (0) loads @ 21cy/load (0) trucks =	cy
To Date Phase V estimated cumulative waste placed =	290,565 cy
11/01/09 Volume Adjustment to Correlate with CAMU Placement Survey	123,750 cy

Cumulative Total To Date All Phases =	Estimated Waste at Completion	
	(cy)	% Complete
	2,936,211	101.2%

Geosynthetics Placed

	Previous	Placed	Cumulative Placed
Phase I (complete)			
GCL	307,372	0	307,372
Geomembrane	307,372	0	307,372
Geocomposite	307,372	0	307,372
Geotextile	69,340	0	69,340
Phase II (complete)			
GCL	498,468	0	498,468
Geomembrane	498,468	0	498,468
Geocomposite	520,592	0	520,592
Geotextile	0	0	0
Phase IIIA			
GCL	221,000	0	221,000
Geomembrane	221,000	0	221,000
Geocomposite	221,000	0	221,000
Geotextile	20,000	0	20,000
Phase IIIB			
GCL	340,535	0	340,535
Geomembrane	340,535	0	340,535
Geocomposite	340,535	0	340,535
Geotextile	50,000	0	50,000
Phase IV			
GCL	459,942	0	459,942
Geomembrane	459,942	0	459,942
Geocomposite	459,952	0	459,952
Geotextile	12,390	0	12,390
Phase V			
GCL	558,653	0	558,653

DAILY PRODUCTION & QUALITY CONTROL REPORT

Project No./Contract No.	Project Title / Location	Day of Report	Report No.
6389	BRC Eastside Common Areas Soils Remediation	09-Jan-10	536

Geomembrane	558,653	0	558,653
Geocomposite	558,653	0	558,653
Geotextile	15,925	0	15,925

BMI North

GCL	1,111,468	0	1,111,468
Geomembrane	1,111,468	0	1,111,468
Geocomposite	1,111,468	0	1,111,468

BMI South

GCL	177,000	0	177,000
Geomembrane	177,000	0	177,000
Geocomposite	177,000	0	177,000

Debris Storage Area (complete)

Geomembrane	12,000	0	12,000
-------------	--------	---	--------

CAMU Cover

GCL	494,514	11,000	505,514
Geomembrane	494,514	11,000	505,514
Geocomposite	397,000	0	397,000

		Total Geosynthetics for CAMU Basic Scope (sf)	% Complete of Basic Scope	Total Geosynthetics for CAMU Basic Scope +Option Scope	% Complete of Basic Scope + Option Scope
Geosynthetic System Cumulative Total To Date All CAMU Phases	4,179,952	4,151,232	100.7%	6,534,075	64.0%

HEALTH & SAFETY

Description of Health & Safety Actions Taken Today / Safety Inspections Conducted

Safety Topic:

Eastside Day: Discussed: Smoke detectors, change batteries once a year..
CAMU Day: Discussed: Smoke detectors, change batteries once a year..
Night shift CAMU & Eastside: No Activity.

CONSTRUCTION QUALITY ASSURANCE & QUALITY CONTROL

Description of Quality Control Actions Taken Today / Quality Inspections Conducted

Daily CQA Summary.

Monitored waste placement into the CAMU of eastside material on the day shift.
Monitored placement of interim cover and perform density testing on the day shift.
Monitored the installation of geosynthetics and testing.
Monitored the placement of final cover soils.

ISSUES AND/OR ITEMS OF DISCUSSION

Discussion of Issues / Concerns / Conversations / Topics

SITE VISITORS

[illegible]

Report Prepared By / Title

Richard Laubinger, Construction Manager

Date Prepared

9-Jan-10

Signature _____

Weather Table

Sunny/Clear	☀
Sunny / Party Cloudy	☀☁
Cloudy / Partly Sunny	☁☀
Cloudy	☁
Overcast	☁☁☁
Light Rain	☔
Rain	☔☔☔
Thunderstorms	⚡
Snow	❄

Basic Remediation Company

875 West Warm Springs Road
Henderson, Nevada 89011

DAILY PRODUCTION & QUALITY CONTROL REPORT

Project No./Contract No.	Project Title / Location	Day of Report	Report No.
6389 0	BRC Eastside Common Areas Soils Remediation 0	09-Jan-10	536

DAILY PHOTO LOG

Photo 1



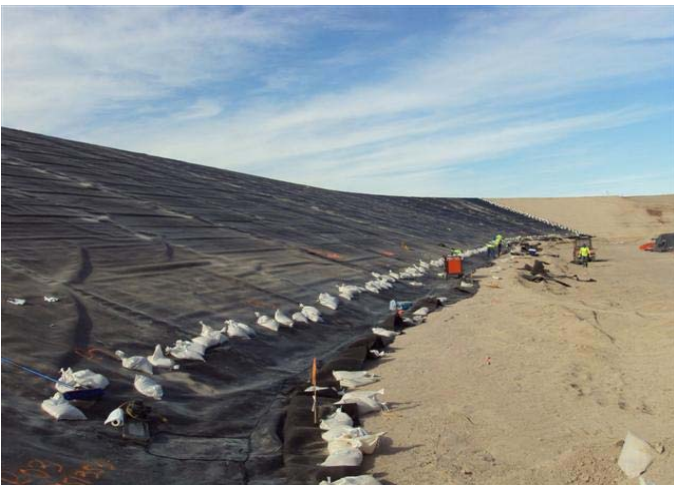
CAMU: Phase V.

Photo 2



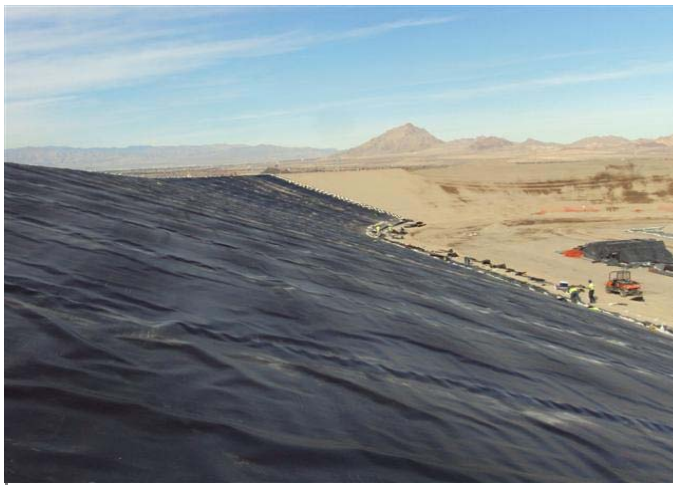
CAMU: Phase V.

Photo 3



CAMU: Phase I and Phase II, east slope.

Photo 4



CAMU: Phase I and Phase II, east slope.