

Log of Boring No. BRC-SB-08-A

BMI Site - Hydrogeologic Characterization

Henderson, Nevada



Drilling Method: Mud Rotary
Drilling Equipment: Gefco 15K
Drilling Contractor: Water Development Corporation
Driller: Steve Odom

Borehole Total Depth: 400 ft bgs
Borehole Diameter: 10 in
Boring Location: Location 8 (Well ID: MCF-08A)
Depth to Water (ft. bgs): NA

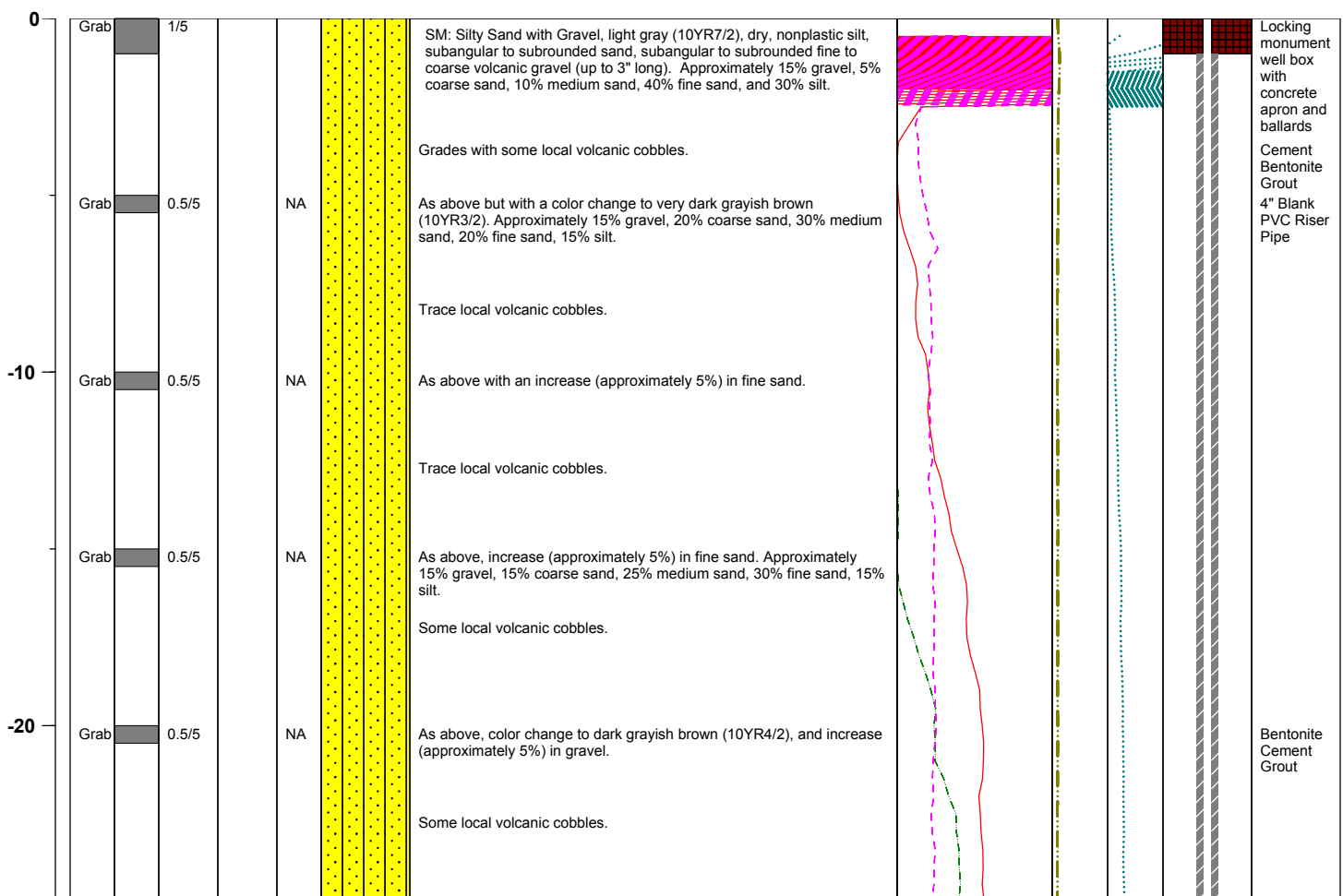
Sample Type: Grab/Soil Cuttings
Sample Interval: Varied

Logged By: Adam Norris
Date Started: 3/9/04
Date Completed: 3/10/04

Monitoring Well Construction

Type of Surface Seal:	Bentonite-Grout	Screen Slot Size:	0.010 in
Blank Casing Type/Size:	4" Sch 80 PVC	Top of Screen (ft. bgs):	29 ft bgs
Screen Type/Size:	4" Sch 80 PVC	Bottom of Screen (ft. bgs):	49 ft bgs
Transition Sand Type:	0.010 in	Type of Sand Pack:	#10 x 20

Depth Elevation (BGS)	Sample Type	Sample Interval	Sample Recovery	Sample Retained for Analysis	PID	Lithology	Soil Description	Geophysical Data					Well Construction
								E-Log			Caliper Log (inch)	Guard Log (OHM.M)	
								16" (OHM)	64" (OHM)	S. PT. (OHM)			



Project No. 3850360

Log of Boring: BRC-SB-08-A

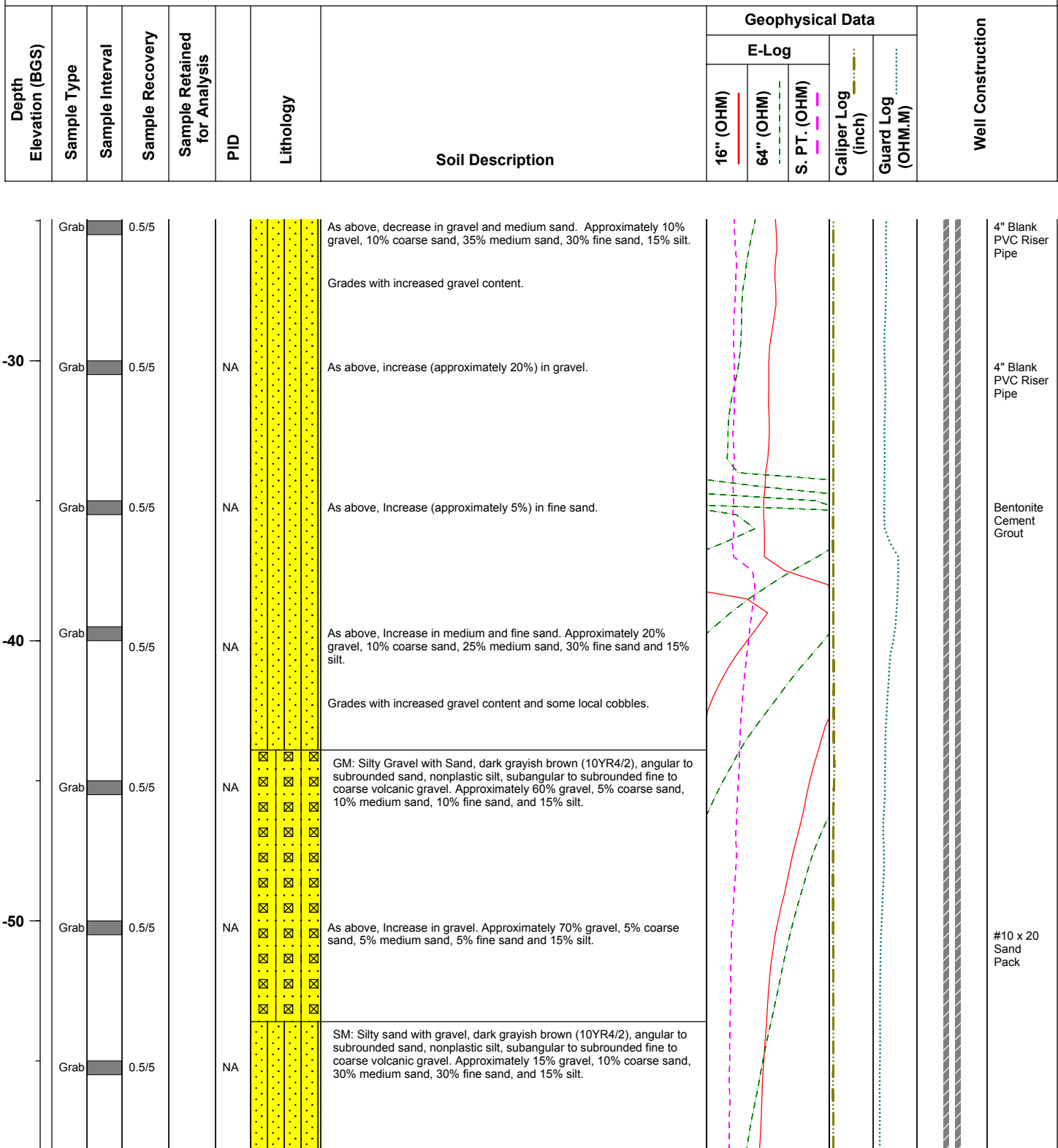


BMI Site - Hydrogeologic Characterization

Henderson, Nevada



Log of Boring No. BRC-SB-08-A



Project No. 3850360

Log of Boring: BRC-SB-08-A



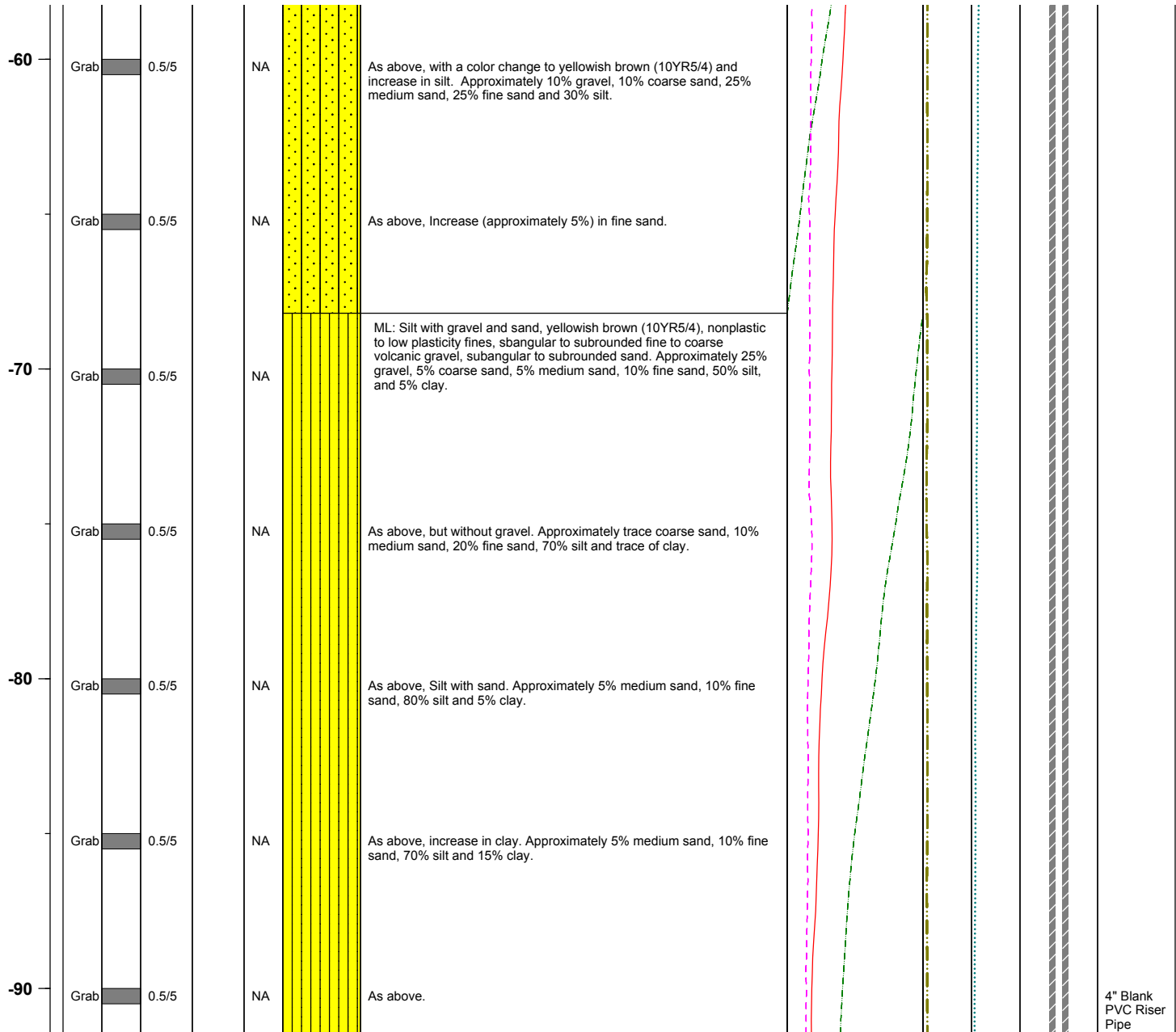
BMI Site - Hydrogeologic Characterization

Henderson, Nevada



Log of Boring No. BRC-SB-08-A

Depth Elevation (BGS)	Sample Type	Sample Interval	Sample Recovery	Sample Retained for Analysis	PID	Lithology	Soil Description	Geophysical Data				Well Construction
								E-Log			Caliper Log (inch)	
								16" (OHM)	64" (OHM)	S. PT. (OHM)		
								<div><div></div></div>	<div><div></div></div>	<div><div></div></div>		



Project No. 3850360

Log of Boring: BRC-SB-08-A



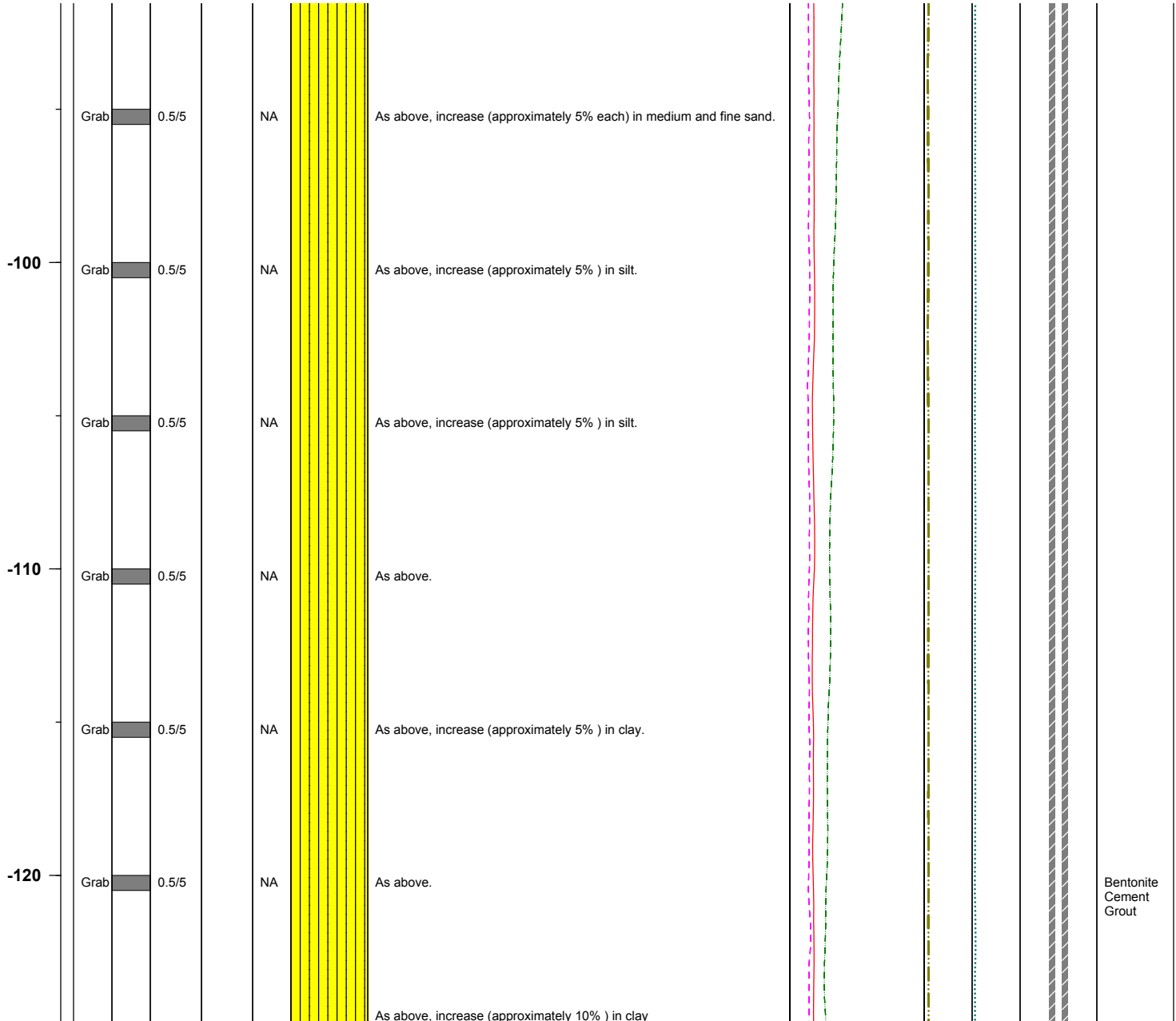
BMI Site - Hydrogeologic Characterization

Henderson, Nevada



Log of Boring No. BRC-SB-08-A

Depth Elevation (BGS)	Sample Type	Sample Interval	Sample Recovery	Sample Retained for Analysis	PID	Lithology	Soil Description	Geophysical Data				Well Construction	
								E-Log			Caliper Log (inch)		Guard Log (OHM.M)
								16" (OHM)	64" (OHM)	S. PT. (OHM)			



Project No. 3850360

Log of Boring: BRC-SB-08-A



BMI Site - Hydrogeologic Characterization

Henderson, Nevada



Log of Boring No. BRC-SB-08-A

Depth Elevation (BGS)	Sample Type	Sample Interval	Sample Recovery	Sample Retained for Analysis	PID	Lithology	Soil Description	Geophysical Data					Well Construction																																																																																																																																																																																																																																																																																																																																																																																																																																																																																																																																																																																																																																																																																																																																																																																																																																																																																																																																																																																																																																																																																																																																																																																																																																																																																																																																																																																																																																																		
								E-Log			Caliper Log (inch)	Guard Log (OHM.M)																																																																																																																																																																																																																																																																																																																																																																																																																																																																																																																																																																																																																																																																																																																																																																																																																																																																																																																																																																																																																																																																																																																																																																																																																																																																																																																																																																																																																																																			
								16" (OHM)	64" (OHM)	S. PT. (OHM)																																																																																																																																																																																																																																																																																																																																																																																																																																																																																																																																																																																																																																																																																																																																																																																																																																																																																																																																																																																																																																																																																																																																																																																																																																																																																																																																																																																																																																																					
	Grab		0.5/5		NA																																																																																																																																																																																																																																																																																																																																																																																																																																																																																																																																																																																																																																																																																																																																																																																																																																																																																																																																																																																																																																																																																																																																																																																																																																																																																																																																																																																																																																																										

Project No. 3850360

Log of Boring: BRC-SB-08-A



BMI Site - Hydrogeologic Characterization

Henderson, Nevada



Log of Boring No. BRC-SB-08-A

Depth Elevation (BGS)	Sample Type	Sample Interval	Sample Recovery	Sample Retained for Analysis	PID	Lithology	Soil Description	Geophysical Data				Well Construction	
								E-Log			Caliper Log (inch)		Guard Log (OHM.M)
								16" (OHM)	64" (OHM)	S. PT. (OHM)			

-160	Grab	0.5/5	NA	As above, increase (approximately 5% each) in medium and fine sand.								
	Grab	0.5/5	NA	As above, decrease (approximately 5% each) in medium and fine sand, no trace of local gypsum.								
-170	Grab	0.5/5	NA	As above, with a change in color (10YR5/3).								
	Grab	0.5/5	NA	As above, with a trace of local gypsum								
-180	Grab	0.5/5	NA	As above.								
	Grab	0.5/5	NA	As above, no trace of local gypsum, color change to (7.5YR5/4), and increase (approximately 5%) in silt.								
-190	Grab	0.5/5	NA	As above, yellowish brown (10YR5/4). Approximately 5% fine sand, 65% silt, and 30% clay.								Bentonite Cement Grout

Project No. 3850360

Log of Boring: BRC-SB-08-A



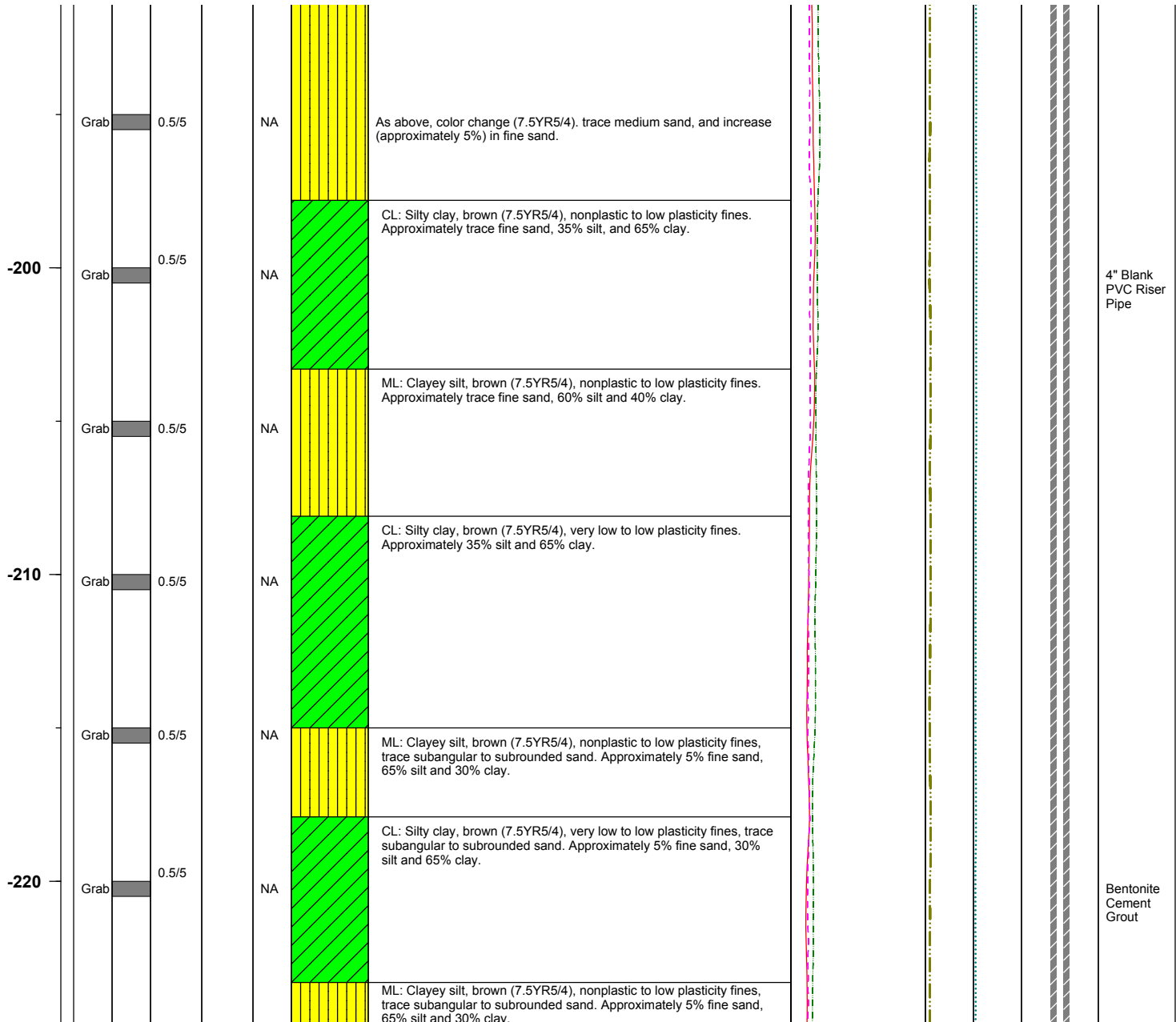
BMI Site - Hydrogeologic Characterization

Henderson, Nevada



Log of Boring No. BRC-SB-08-A

Depth Elevation (BGS)	Sample Type	Sample Interval	Sample Recovery	Sample Retained for Analysis	PID	Lithology	Soil Description	Geophysical Data				Well Construction	
								E-Log			Caliper Log (inch)		Guard Log (OHM.M)
								16" (OHM)	64" (OHM)	S. PT. (OHM)			



Project No. 3850360

Log of Boring: BRC-SB-08-A



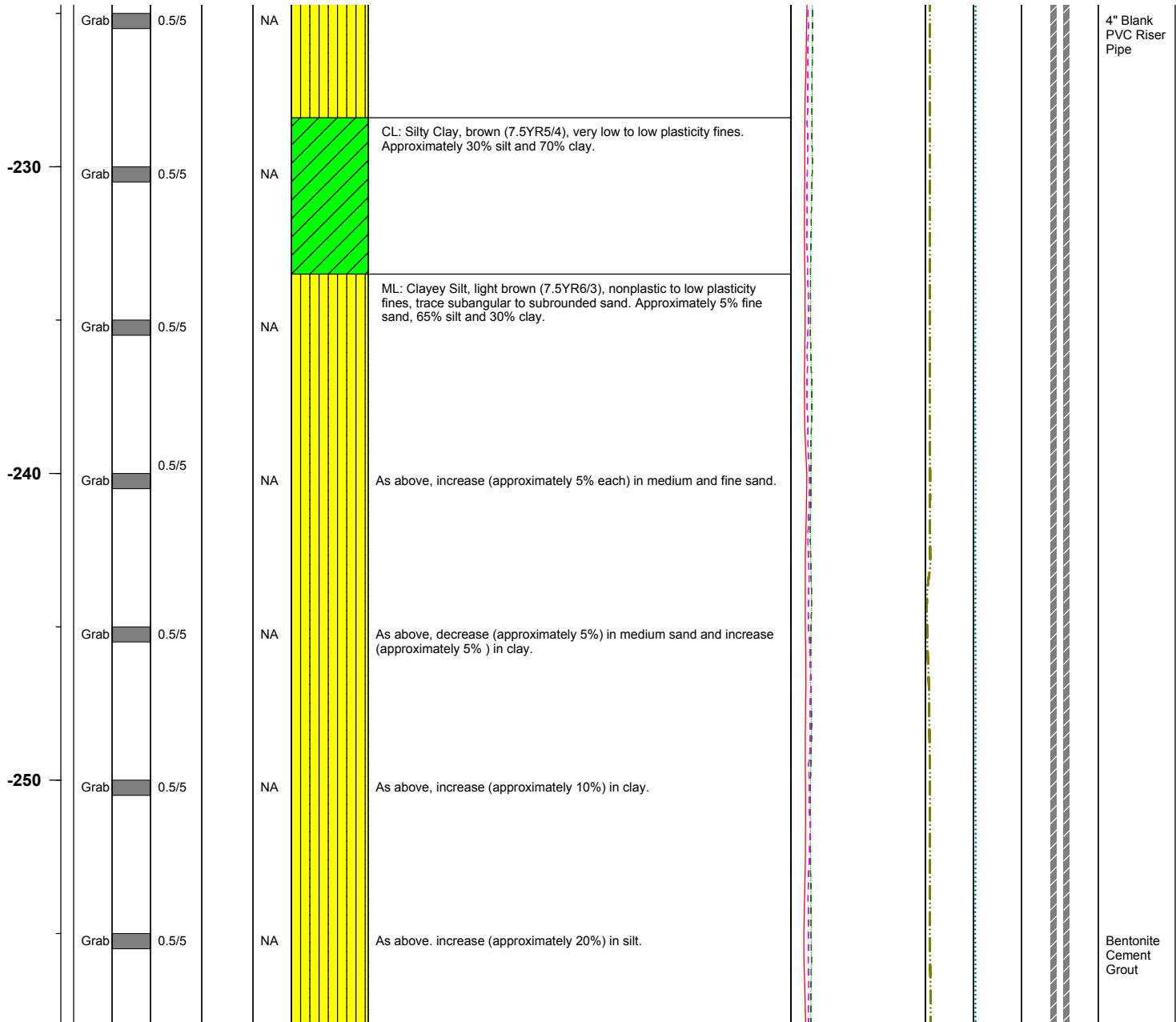
BMI Site - Hydrogeologic Characterization

Henderson, Nevada



Log of Boring No. BRC-SB-08-A

Depth Elevation (BGS)	Sample Type	Sample Interval	Sample Recovery	Sample Retained for Analysis	PID	Lithology	Soil Description	Geophysical Data				Well Construction	
								E-Log			Caliper Log (inch)		Guard Log (OHM.M)
								16" (OHM)	64" (OHM)	S. PT. (OHM)			



Project No. 3850360

Log of Boring: BRC-SB-08-A



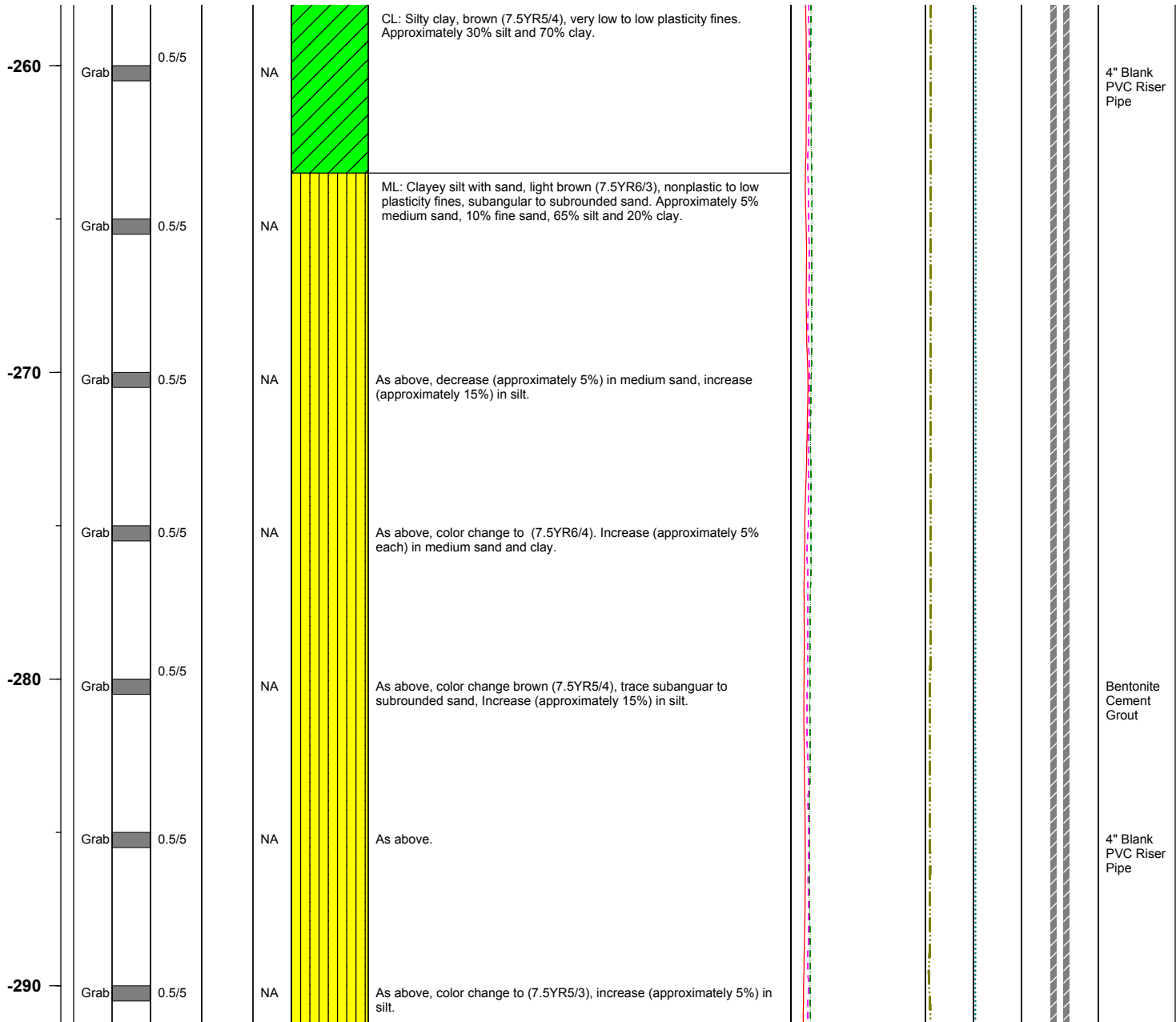
BMI Site - Hydrogeologic Characterization

Henderson, Nevada



Log of Boring No. BRC-SB-08-A

Depth Elevation (BGS)	Sample Type	Sample Interval	Sample Recovery	Sample Retained for Analysis	PID	Lithology	Soil Description	Geophysical Data				Well Construction	
								E-Log			Caliper Log (inch)		Guard Log (OHM.M)
								16" (OHM)	64" (OHM)	S. PT. (OHM)			



Project No. 3850360

Log of Boring: BRC-SB-08-A



BMI Site - Hydrogeologic Characterization

Henderson, Nevada



Log of Boring No. BRC-SB-08-A

Depth Elevation (BGS)	Sample Type	Sample Interval	Sample Recovery	Sample Retained for Analysis	PID	Lithology	Soil Description	Geophysical Data				Well Construction	
								E-Log			Caliper Log (inch)		Guard Log (OHM.M)
								16" (OHM)	64" (OHM)	S. P.T. (OHM)			

	Grab	0.5/5	NA			As above, color change to (7.5YR5/4) increase (approximately 10%) in clay.						
-300	Grab	0.5/5	NA			As above, decrease (approximately 5%) in clay.						
	Grab	0.5/5	NA			As above, increase (approximately 5%) in clay.						
-310	Grab	0.5/5	NA			As above, color change to (7.5YR6/4) decrease (approximately 10%) in clay.						
	Grab	0.5/5	NA			As above,						
-320	Grab	0.5/5	NA			As above, color change to (7.5YR5/4), decrease (approximately 5%) in silt.						

4" Blank
PVC Riser
Pipe

Project No. 3850360

Log of Boring: BRC-SB-08-A



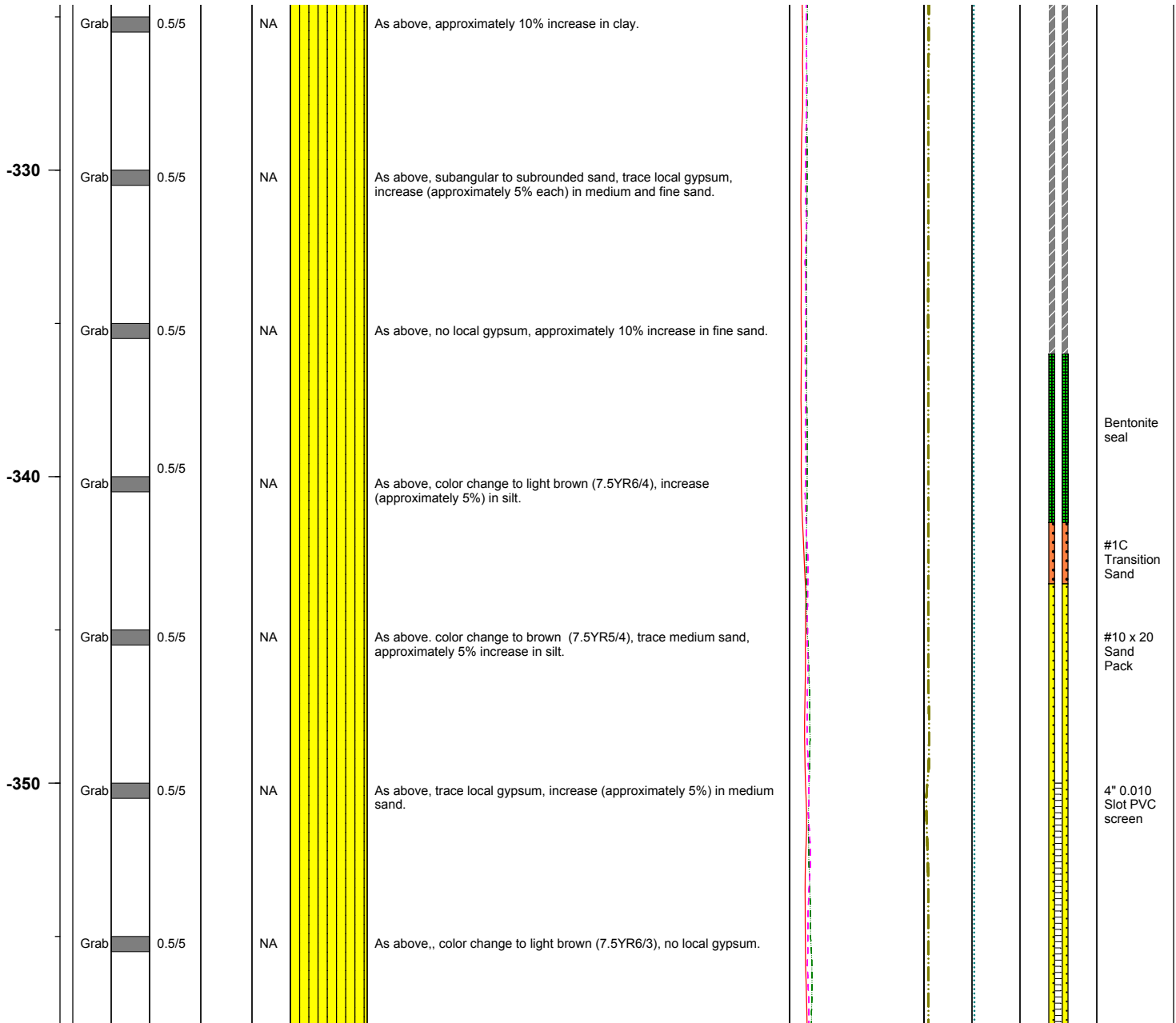
BMI Site - Hydrogeologic Characterization

Henderson, Nevada



Log of Boring No. BRC-SB-08-A

Depth Elevation (BGS)	Sample Type	Sample Interval	Sample Recovery	Sample Retained for Analysis	PID	Lithology	Soil Description	Geophysical Data				Well Construction
								E-Log			Caliper Log (inch)	
								16" (OHM)	64" (OHM)	S. PT. (OHM)		



Project No. 3850360

Log of Boring: BRC-SB-08-A



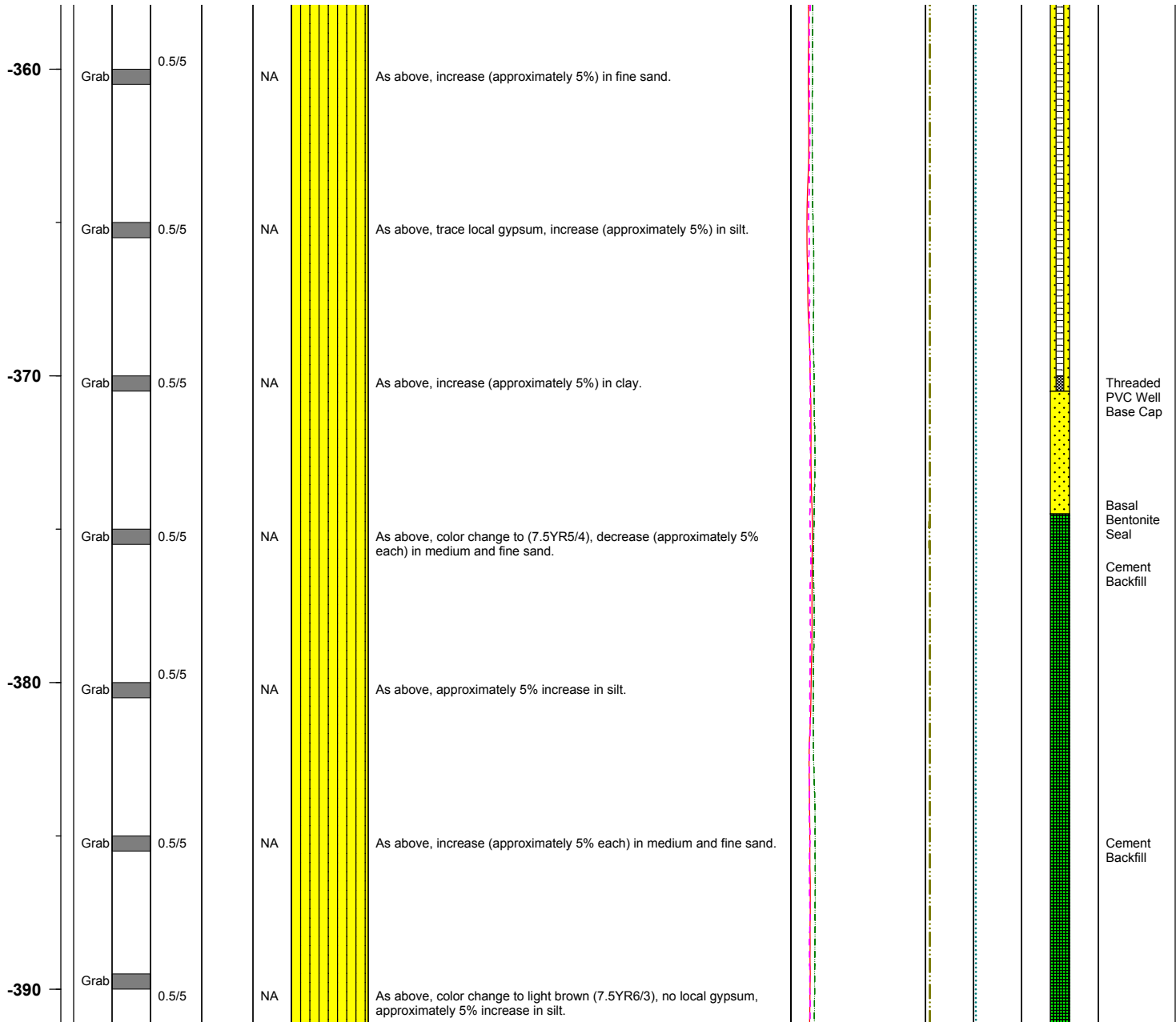
BMI Site - Hydrogeologic Characterization

Henderson, Nevada



Log of Boring No. BRC-SB-08-A

Depth Elevation (BGS)	Sample Type	Sample Interval	Sample Recovery	Sample Retained for Analysis	PID	Lithology	Soil Description	Geophysical Data			Well Construction	
								E-Log		Caliper Log (inch)		Guard Log (OHM.M)
								16" (OHM)	64" (OHM)			



Project No. 3850360

Log of Boring: BRC-SB-08-A



BMI Site - Hydrogeologic Characterization

Henderson, Nevada



Log of Boring No. BRC-SB-08-A

Depth Elevation (BGS)	Sample Type	Sample Interval	Sample Recovery	Sample Retained for Analysis	PID	Lithology	Soil Description	Geophysical Data				Well Construction	
								E-Log			Caliper Log (inch)		Guard Log (OHM.M)
								16" (OHM)	64" (OHM)	S. P.T. (OHM)			

	Grab	0.5/5		NA		As above, trace local gypsum.						
-400	Grab	0.5/5				As above.						

Project No. 3850360

Log of Boring: BRC-SB-08-A

