

DAILY PRODUCTION & QUALITY CONTROL REPORT

Project No./Contract No.	Project Title / Location	Day of Report	Report No.
6389	BRC Eastside Common Areas Soils Remediation	05-Aug-08	40

PROJECT POINTS OF CONTACT

Position	Name	E-Mail Address	Phone No.
BRC PROJECT MANAGER	Lee Farris	lfarris@landwellco.com	702-567-0400
BRC PROJECT MANAGER	Ranajit Sahu	sahuron@earthlink.net	702-567-0400
CONST. PROJECT MANAGER	Dan Brennecke	Dan.Brennecke@westonsolutions.com	970-260-5886
Construction Manager	Richard Laubinger	Richard.Laubinger@westonsolutions.com	720-641-8660

WEATHER CONDITIONS

Conditions				Temp (°F)		Wind		Add'l Readings	
AM	Sunny / Partly Cloudy	PM	Sunny / Partly Cloudy	Low	81			Precip. (in/hr)	
				High	100	SW	7mph	Humidity (%)	
Additional Weather Comments light wind.									

ON-SITE WESTON PERSONNEL

Name	Position	Trade / Work Performed	Y/N
Dick Laubinger	Construction Manager	Construction Management Services.	Y
Dan Brennecke	Project Manager, CM	Construction Management Services.	Y
TBD	Project Engineer	Construction Management Services.	N
TBD	Admin Assistant	Construction Management Services.	N

ON-SITE GEOSYNTEC PERSONNEL

Name	Position	Trade / Work Performed	Y/N
Wayne Wofford	QA/QC Tech	Oversight	Y
Brent Barbacane	QA/QC Tech	Oversight	Y
Jim Cox	QA/QC Supervisor	Oversight	N
Greg Corcoran	Engineer of Record	Oversight	N
Robecca Flynn	Engineer	Oversight	N

ON-SITE SUPPORT PERSONNEL

Name	Position	Trade / Work Performed	Y/N
Doug Herlocker, Tetra Tech	Air Monitoring Specialist	Air Monitoring	Y
Becky Dano, Tetra Tech	Air Monitoring Specialist	Air Monitoring	Y
Jerry Fauchaux, Tetra Tech	Air Monitoring Specialist	Air Monitoring	Y
Linda Nations, BRC	BRC, QA Oversight	Site Monitoring, Progress and Security	Y

OVERSITE PERSONNEL

Name	Position	Trade / Work Performed	Y/N
Scott McKeag, McGinley	Oversight	For NDEP	N
Devin Gordon, McGinley	Oversight	For NDEP	Y
Dock Kim, ATC	Field Observation	For AIG	Y
Ron Perry, ASW	Inspector	For NDEP, CAMU Subgrade and Liner Inspection	N

ON-SITE CONTRACTOR PERSONNEL

Name	Company	Trade / Work Performed	Y/N
Erik Geringer	Entact	Project Manager	Y
Josh Carrol	Entact	Asst Project Manager	Y
Russ Karnes	Entact	Eastside, Superintendent	Y
Michael Carlson	Entact	Engineer	Y
Joe Curilla	Entact	Health & Safety Officer	Y
Michael Parker	Entact	Health and Safety Technician	Y
	Entact	18 Equipment Operators & Truck Drivers	Y
Ed Long	Entact	CAMU, Superintendent	Y
	American Asphalt	Earthwork Superintendent	Y
	American Asphalt	11 Equipment Operators & Truck Drivers,	Y
	Environmental Specialties, Inc	Liner Superintendent	Y
	Environmental Specialties, Inc	12 Liner laborers	Y
	Kenney Survey	Survey at Phase 1 CAMU	Y

DAILY PRODUCTION & QUALITY CONTROL REPORT

Project No./Contract No.	Project Title / Location	Day of Report	Report No.
6389	BRC Eastside Common Areas Soils Remediation	05-Aug-08	40

	PBS&J Survey, QA		N	

ON-SITE EQUIPMENT

Equipment	Vendor / Tag No.	Work Performed				
CAT D400E Dump Truck (1)		Eastside	-	-	-	-
JD D400 Dump Trucks (4)		Eastside		-	-	-
CAT 324D long stick excavator		CAMU	-	-	-	-
CAT D8R Dozer with disc		Eastside		-	-	-
CAT 345 excavator		Eastside		-	-	-
CAT 330 Excavator		Eastside		-	-	-
Case double pan scrapers.		Eastside		-	-	-
CAT D6 LGP Dozer (2)		Eastside				-
Water Trucks (2)		Eastside				-
637/631 Cat Scrapers (6)		CAMU				-
CAT 16H Grader		CAMU				-
CAT D-10 Dozer		CAMU				-
CAT Water Wagon		CAMU				-
CAT D-6 Dozer		CAMU				-
CAT 14H Grader		CAMU				-
Gradall		CAMU				-
Bobcat Skidsteer		CAMU				-
JLG		CAMU				-
CAT D4 dozer		CAMU				-
						-
						-
						-

MATERIAL HANDLING (ON-SITE DELIVERY / REMOVAL)

Material	Vendor	QTY	UOM	Purpose	Delivery Verification			
					Condition	Qty	Spec	Tags
GCL	CETCO	0	rolls	For CAMU				
Geocomposite 60 mil Liner	Agru	0	rolls	For CAMU				

WORK COMPLETED

Description of Work Executed Today

Eastside Mixing and Drying Activity:

- Loading out dried material from SW-4 using 345 excavator. (4) haul trucks hauling to beta ditch stockpile. 176 loads, (3,520) cy.
- Leveled material from SW-4 on staging area and beta ditch using D6 dozer..
- D8 Dozer disking wet pond material that is spread over the dry ponds.
- Versatile tractor and pans transporting dried out material from CTR-2 and spreading at stockpile. 75 loads, (2,250) cy.
- SW-8, 345 excavator remediating additional discolored soils below liner. Monitored by Construction Manager. (97) loads = (2,134) cy, to beta - ditch stockpile. Two spots excavated an additional 10' total, still discolored.
- Estimated dried material hauled to stockpiles: 80 loads, (1,760) cy daily, (TBD)cy cumulative.
- Welded 3" pipe for future pumping operations.

CAMU Activity:

Excavation

- Phase 2, Excavation 631/632 scrapers, 3,800 cy.
- Screener, screening soils for slopes, continued placement as needed on south slope.
- Entact maintained 12" clean soil cap over west haul rd and bypass rd.
- Phase 1, (0) cy daily.. (TBD) cumulative.

Embankment

- Phase 1 estimated daily embankment placed: 0 cy
- Phase 1 estimated cumulative embankment placed: 0 cy

Waste Placement

- Phase 1 estimated daily waste placed: 0 cy
- Phase 1 estimated cumulative waste placed: 0 cy

Geosynthetics

- Phase 1 liner deployment. East slope..
- Phase 1 GCL placed: 34,740 sf daily, 153,210 sf cumulative
- Phase 1 Geomembrane: 37,796 sf daily, 176,396 sf cumulative
- Phase 1 Geocomposite: 0 sf daily, 0 sf cumulative
- Phase 1 Geotextile: 0 sf daily, 0 sf cumulative

Other: Sewer Realignment: Berm work complete. Construction fence, continued.

Northeast Detention Basin at CAMU: Construction fence installed around outside perimeter, completed.
Pothole areas marked for excavation 8-7-08.

DAILY PRODUCTION & QUALITY CONTROL REPORT

Project No./Contract No.	Project Title / Location	Day of Report	Report No.
6389	BRC Eastside Common Areas Soils Remediation	05-Aug-08	40

Perimeter Fence Inspection and Repair.

No Issues.

HEALTH & SAFETY

Description of Health & Safety Actions Taken Today / Safety Inspections Conducted

Entact H&S Tailgates

Morning: Radio Etiquette.

Afternoon: Wear face sheild when deconning equipment and trucks..

American Asphalt Tailgates

Morning: Scraper traffic and Liner traffic on site. Watch for visitors.

Safety Incidents: Entact Safety had two liner workers stop work based on body temperatures. Workers Ok.

QUALITY CONTROL

Description of Quality Control Actions Taken Today / Quality Inspections Conducted

Daily CQA Summary

Inspected Liner staging area and covering. Ok

Inspected and documented, Phase 1 Liner Installation, on East slope.

Liner Crew finished installation on east slope, & top of berm. Began liner on floor before shut down due to temperature.

Inspected 12" capped haul roads for degradation. All areas ok.

Inspected East slope including berm area subgrade, Approved for installation.

Dust: Met requirements.

Deviations from CQA Plan

None

ISSUES AND/OR ITEMS OF DISCUSSION

Discussion of Issues / Concerns / Conversations / Topics

CAMU: Burrowing Owls area, Sighting again today (3).

Eastside, SW-8, Remediation below liner. Two areas remain discolored after 10' excavation below liner.

SITE VISITORS

[illegible]

Report Prepared By / Title

Dick Laubinger, Construction Manager

Date Prepared

5-Aug-08

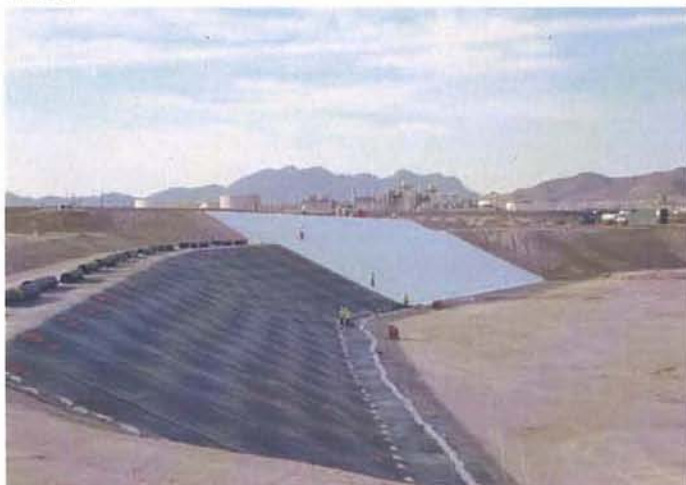
Signature _____

DAILY PRODUCTION & QUALITY CONTROL REPORT

Project No./Contract No.	Project Title / Location	Day of Report	Report No.
6389 0	BRC Eastside Common Areas Soils Remediation 0	05-Aug-08	40

DAILY PHOTO LOG

Photo 1



CAMU, Phase 1, East slope liner installation.

Photo 2



CAMU, Phase 1, Liner Crew Deploying liner on East Slope.

Photo 3



CAMU, Phase 1, End of East slope liner installation.

Photo 4



Eastside, SW-8 discolored soil after 10' additional excavation below liner.