

## DAILY PRODUCTION & QUALITY CONTROL REPORT

| Project No./Contract No. | Project Title / Location                    | Day of Report | Report No. |
|--------------------------|---|---------------|------------|
| 6389                     | BRC Eastside Common Areas Soils Remediation | 21-Oct-08     | 107        |

### PROJECT POINTS OF CONTACT

| Position               | Name              | E-Mail Address   | Phone No.    |
|------------------------|-------------------|--|--------------|
| BRC PROJECT MANAGER    | Lee Farris        | <a href="mailto:lfarris@landwellco.com">lfarris@landwellco.com</a>                             | 702-567-0400 |
| BRC PROJECT MANAGER    | Ranajit Sahu      | <a href="mailto:sahuron@earthlink.net">sahuron@earthlink.net</a>                               | 702-567-0400 |
| CONST. PROJECT MANAGER | Dan Brennecke     | <a href="mailto:Dan.Brennecke@westonsolutions.com">Dan.Brennecke@westonsolutions.com</a>       | 970-260-5886 |
| Construction Manager   | Richard Laubinger | <a href="mailto:Richard.Laubinger@westonsolution.com">Richard.Laubinger@westonsolution.com</a> | 720-641-8660 |

### WEATHER CONDITIONS

| Conditions |             |    |             | Temp (°F) | Wind     | Add'l Readings  |  |
|------------|-------------|----|-------------|-----------|----------|-----------------|--|
| AM         | Sunny/Clear | PM | Sunny/Clear | Low 58    |          | Precip. (in/hr) |  |
|            |             |    |             | High 84   | SSW 5mph | Humidity (%)    |  |

Additional Weather Comments

Calm in AM, Light wind from the South in PM.

### ON-SITE WESTON PERSONNEL

| Name           | Position             | Trade / Work Performed            | Y/N |
|----------------|----------------------|-----------------------------------|-----|
| Dick Laubinger | Construction Manager | Construction Management Services. | Y   |
| Dan Brennecke  | Project Manager. CM  | Construction Management Services. | Y   |
| Dave Goertz    | Project Engineer     | Construction Management Services. | N   |
| Richard Davis  | Project Engineer     | Construction Management Services. | Y   |
| Chris White    | Assist. Const. Mgr   | Construction Management Services. | Y   |
|                | Assist. Const. Mgr   | Construction Management Services. |     |
| June Laubinger | Admin Assistant      | Construction Management Services. | Y   |
|                |                      |                                   |     |
|                |                      |                                   |     |
|                |                      |                                   |     |

### ON-SITE GEOSYNTEC PERSONNEL

| Name            | Position         | Trade / Work Performed | Y/N |
|-----------------|------------------|------------------------|-----|
| Greg Corcoran   | Design Engineer  | Oversight              | Y   |
| Dan Street      | QA Manager       | Oversight              | Y   |
| Jim Cox         | QA/QC Supervisor | Oversight              | N   |
| Robecca Flynn   | Engineer         | Oversight              | Y   |
| Wayne Wofford   | QA/QC Tech       | Oversight              | Y   |
| Brent Barbacane | QA/QC Tech       | Oversight              | Y   |
| Camon Liddell   | QA/QC Tech       | Oversight              | Y   |

### ON-SITE SUPPORT PERSONNEL

| Name                       | Position                  | Trade / Work Performed | Y/N |
|----------------------------|---------------------------|------------------------|-----|
| Doug Herlocker, Tetra Tech | Air Monitoring Specialist | Air Monitoring,        | N   |
| Becky Dano, Tetra Tech     | Air Monitoring Specialist | Air Monitoring,        | Y   |
| Jerry Fauchaux, Tetra Tech | Air Monitoring Specialist | Air Monitoring         | N   |
|                            |                           |                        |     |
|                            |                           |                        |     |

### OVERSITE PERSONNEL

| Name                   | Position          | Trade / Work Performed | Y/N |
|------------------------|-------------------|------------------------|-----|
| Scott McKeag, McGinley | Oversight         | For NDEP               | Y   |
| Devin Gordon, McGinley | Oversight         | For NDEP               | Y   |
| Jennifer Coe, ATC      | Field Observation | For AIG                | Y   |
| Ron Perry, ASW         | Inspector         | Liner Inspector        | Y   |
| PBS&J, Survey          | Surveyors         | Surveying, QA          | N   |
| Brian Rakvica          | Inspector         | NDEP                   | Y   |

### ON-SITE CONTRACTOR PERSONNEL

| Name            | Company                        | Trade / Work Performed                 | Y/N |
|-----------------|--------------------------------|--|-----|
| Erik Geringer   | Entact                         | Project Manager                        | Y   |
| Josh Carrol     | Entact                         | Asst Project Manager                   | Y   |
| Russ Karnes     | Entact                         | Eastside, Superintendent               | Y   |
| Michael Carlson | Entact                         | Engineer                               | Y   |
| Joe Curilla     | Entact                         | Health & Safety Officer                | Y   |
| Timothy Stadt   | Entact                         | Health and Safety Technician           | Y   |
|                 | Entact                         | 26 Equipment Operators & Truck Drivers | Y   |
| Ed Long         | Entact                         | CAMU, Superintendent                   | N   |
| Adam Calveledge | Entact                         | Health & Safety Officer                | Y   |
|                 |                                |  |     |
| Rick McIntire   | Entact                         | CSP, Safety                            | N   |
|                 | American Asphalt               | 1 Equipment operators                  | Y   |
|                 | American Asphalt               | 1 Superintendent                       | Y   |
|                 | Environmental Specialties, Inc | Liner Superintendent                   | N   |

## DAILY PRODUCTION & QUALITY CONTROL REPORT

| Project No./Contract No. | Project Title / Location                    | Day of Report | Report No. |
|--------------------------|---|---------------|------------|
| 6389                     | BRC Eastside Common Areas Soils Remediation | 21-Oct-08     | 107        |

|  |                                |                   |   |  |
|--|--------------------------------|-------------------|---|--|
|  | Environmental Specialties, Inc | Laborers/ Seamers | N |  |
|  | Kenney Survey                  | CAMU              | N |  |
|  | ABC Survey                     | Eastside/CAMU     | N |  |
|  |                                |                   |   |  |
|  |                                |                   |   |  |
|  |                                |                   |   |  |

### ON-SITE EQUIPMENT

| Equipment                     | Vendor / Tag No. | Work Performed    |   |   |   |   |
|-------------------------------|------------------|-------------------|---|---|---|---|
| CAT D400E Dump Truck (2)      |                  | CAMU              | - | - | - | - |
| JD D400 Dump Trucks (8)       |                  | Eastside          |   | - | - | - |
| CAT 324D long stick excavator |                  | CAMU              | - | - | - | - |
| CAT D8R Dozer with disc       |                  | Eastside          |   | - | - | - |
| CAT 345 excavator             |                  | Eastside          |   | - | - | - |
| CAT 330 Excavator             |                  | Eastside          |   | - | - | - |
| Case double pan scrapers.     |                  | Eastside          |   | - | - | - |
| CAT D6 LGP Dozer (2)          |                  | Eastside          |   |   |   | - |
| Water Trucks (2)              |                  | Eastside          |   |   |   | - |
| 637/631 Cat Scrapers (6)      |                  | CAMU              |   |   |   | - |
| CAT 16H Grader                |                  | CAMU              |   |   |   | - |
| CAT D-10 Dozer                |                  | CAMU              |   |   |   | - |
| CAT Water Wagon               |                  | CAMU              |   |   |   | - |
| CAT D-6 Dozer                 |                  | CAMU              |   |   |   | - |
| CAT 14H Grader                |                  | CAMU              |   |   |   | - |
| Gradall                       |                  | CAMU              |   |   |   | - |
| JLG                           |                  | CAMU              |   |   |   | - |
| IR Smooth drum Roller         |                  | CAMU, Phase 1     |   |   |   | - |
| Tenent Street Sweeper         |                  | Eastside and CAMU |   |   |   | - |
| Bomag Smooth drum Roller      |                  | CAMU, Phase 1     |   |   |   | - |
|                               |                  |                   |   |   |   | - |
|                               |                  |                   |   |   |   | - |
|                               |                  |                   |   |   |   |   |
|                               |                  |                   |   |   |   |   |

### MATERIAL HANDLING (ON-SITE DELIVERY / REMOVAL)

| Material     | Vendor | Today | UOM   | Purpose           | Delivery Verification |     |      |      |
|--------------|--------|-------|-------|-------------------|-----------------------|-----|------|------|
|              |        |       |       |                   | to date               | Qty | Spec | Tags |
| GCL          | CETCO  | 0     | rolls | For CAMU, On site |                       | 207 |      |      |
| Geocomposite | Agru   | 0     | rolls | For CAMU, On site |                       | 194 |      |      |
| Geomembrane  | Agru   | 0     | rolls | For CAMU, On site |                       | 37  |      |      |

### WORK COMPLETED

*Description of Work Executed Today*

#### Eastside Mixing and Drying Activity:

- Day Shift:
- Welding 4" HDPE pipe for sprinkler system.
- Conducted dust monitoring.
- Installing tarps on haul trucks
- Receive new CAT 40 ton haul trucks delivered.
- Prepare areas for night haul.
- Night shift: Begin hauling material from beta stockpile over to phase 1 in CAMU.

#### CAMU Activity:

##### **Excavation .**

- Phase II continued screening soils and placing lifts on floor. Continued working on south slope.
- Hauled western ditch soils and placed into Phase 1.
- Prepare areas and relocate support zones for night haul.
- Western ditch soils hauled into Phase 1. Day Shift: 28 loads @ 22 cy/loads = 616 cy (1) trucks.
- Eastside Beta stockpile hauled into Phase 1. Night Shift: 130 loads @ 22 cy/loads = 2,860 cy (10) trucks..
- (1) D6 dozer placed western ditch soils in 12" lift. Followed by (1) vibratory roller compacting (3) complete passes in Phase 1.
- Conducted dust monitoring.
- Spread rock at entrance at West Warm Springs
- Worked on haul roads.

##### **Embankment**

- Phase 1 embankment, complete.
- Phase 1 estimated cumulative embankment placed: 0 cy

##### **Waste Placement**

- Phase 1 estimated daily waste placed: 28 loads @ 22cy/load = 616 cy
- night shift placed: 130 loads @ 22cy/load = 2,860 cy
- Phase 1 estimated cumulative waste placed: 106,230 cy. Western Ditch Soils and Eastside beta stockpile.
- Phase 1 Operations Layer placed. completed. Cumulative total: 21,662

**Geosynthetics** Estimated cumulative installed quantity by Phase



## DAILY PRODUCTION & QUALITY CONTROL REPORT

| Project No./Contract No. | Project Title / Location                    | Day of Report | Report No. |
|--------------------------|---|---------------|------------|
| 6389                     | BRC Eastside Common Areas Soils Remediation | 21-Oct-08     | 107        |
|                          |   |               |            |

- Phase 1 GCL placed: 0 sf daily, 307,372 sf cumulative.

- Phase 1 Geomembrane: 0 sf daily, 307,372 sf cumulative
- Phase 1 Geocomposite: 0 sf daily, 307,372 sf cumulative.
- Phase 1 Geotextile: (0) sf daily. 69,340 sf cumulative.

**Other:**

## HEALTH & SAFETY

Description of Health &amp; Safety Actions Taken Today / Safety Inspections Conducted

### Entact H&S Tailgates

Safety Topic Eastside: Exclusion zones and preparation for night work.

Safety Topic CAMU: Exclusion zones and preparation for night work.

Night shift: Discussed starting off slow and roles and responsibilities for the nightshift. Begin haul from the east side and waste placement in Phase 1.

**Safety Incidents:** None.

**Dust Incidents:**. Dust control rock needing washing. Ongoing.

**CONSTRUCTION QUALITY ASSURANCE & QUALITY CONTROL**

Description of Quality Control Actions Taken Today / Quality Inspections Conducted

### Daily CQA Summary..

Monitored site haul road maintenance and construction of new 12" capped haul roads.

Monitored waste relocation and placement from the western ditch into Phase 1. Monitored proof rolling.

Monitored waste placement of Beta stockpile from Eastside to CAMU phase 1.

Monitor screening and placement as well as slope regrading of native soils in Phase II.

**Perform nuclear moisture/density testing Phase 2 floor.**

Continue updating project documents and database to facilitate reporting.

### ISSUES AND/OR ITEMS OF DISCUSSION

Discussion of Issues / Concerns / Conversations / Topics

Night Shift: Began hauling loaded trucks from Eastside to CAMU.

## SITE VISITORS

[illegible]

Report Prepared By / Title

Date Prepared

Signature

**Dick Laubinger, Construction Manager**

21-Oct-08

# Basic Remediation Company

875 West Warm Springs Road  
Henderson, Nevada 89011

## DAILY PRODUCTION & QUALITY CONTROL REPORT

| Project No./Contract No. | Project Title / Location                         | Day of Report | Report No. |
|--------------------------|--|---------------|------------|
| 6389<br>0                | BRC Eastside Common Areas Soils Remediation<br>0 | 21-Oct-08     | 107        |

### DAILY PHOTO LOG

Photo 1



Eastside: Power poles installed.

Photo 2



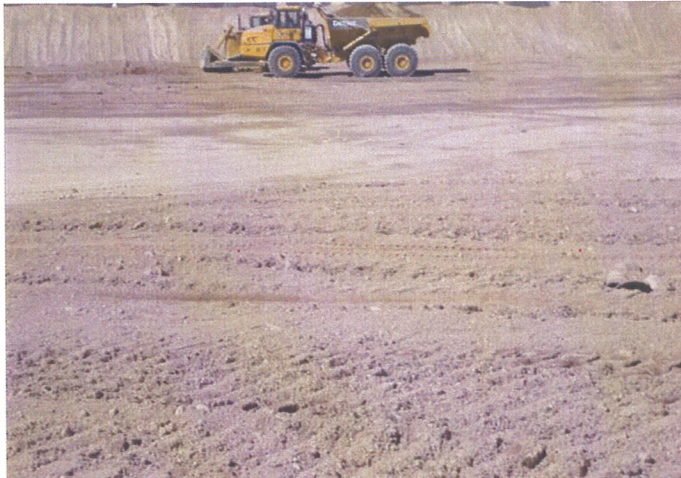
CAMU: Phase 1. Ramp, looking Northwest.

Photo 3



CAMU: Phase 2. Western ditch grading the floor.

Photo 4



CAMU: Phase 1, haul truck preparing to dump.