

DAILY PRODUCTION & QUALITY CONTROL REPORT

| Project No./Contract No. | Project Title / Location | Day of Report | Report No. |
|--------------------------|---|---------------|------------|
| 6389 | BRC Eastside Common Areas Soils Remediation | 24-Oct-08 | 110 |

PROJECT POINTS OF CONTACT

| Position | Name | E-Mail Address | Phone No. |
|------------------------|-------------------|----------------------------------|--------------|
| BRC PROJECT MANAGER | Lee Farris, | lfarris@landwellco.com | 702-567-0400 |
| BRC PROJECT MANAGER | Ranajit Sahu | sahuron@earthlink.net | 702-567-0400 |
| CONST. PROJECT MANAGER | Dan Brennecke | Dan.Brennecke@westonsolutions.c | 970-260-5886 |
| Construction Manager | Richard Laubinger | Richard.Laubinger@westonsolution | 720-641-8660 |

WEATHER CONDITIONS

| Conditions | | | | Temp (F) | Wind | Add'l Readings | |
|--|-------------|----|-------------|----------|----------|----------------|--|
| AM | Sunny/Clear | PM | Sunny/Clear | Low 55 | | Precip. (in) | |
| | | | | High 80 | SSW 5mph | Humidity (%) | |
| Additional Weather Comments Calm in AM, 5 mph, wind from the South in PM. | | | | | | | |

ON-SITE WESTON PERSONNEL

| Name | Position | Trade / Work Performed | Y/N |
|----------------|----------------------|-----------------------------------|-----|
| Dick Laubinger | Construction Manager | Construction Management Services. | Y |
| Dan Brennecke | Project Manager, CM | Construction Management Services. | N |
| Richard Davis | Project Engineer | Construction Management Services. | Y |
| Chris White | Assist. Const. Mgr | Construction Management Services. | Y |
| | Assist. Const. Mgr | Construction Management Services. | N |
| | Assist. Const. Mgr | Construction Management Services. | N |
| June Laubinger | Admin Assistant | Construction Management Services. | Y |
| | | | |
| | | | |
| | | | |

ON-SITE GEOSYNTEC PERSONNEL

| Name | Position | Trade / Work Performed | Y/N |
|-----------------|------------------|------------------------|-----|
| Greg Corcoran | Design Engineer | Oversight | N |
| Dan Street | QA Manager | Oversight | Y |
| Jim Cox | QA/QC Supervisor | Oversight | N |
| Robecca Flynn | Engineer | Oversight | N |
| Wayne Wofford | QA/QC Tech | Oversight | Y |
| Brent Barbacane | QA/QC Tech | Oversight | Y |
| Camron Liddell | QA/QC Tech | Oversight | Y |

ON-SITE SUPPORT PERSONNEL

| Name | Position | Trade / Work Performed | Y/N |
|----------------------------|---------------------------|------------------------|-----|
| Doug Herlocker, Tetra Tech | Air Monitoring Specialist | Air Monitoring. | N |
| Becky Dano, Tetra Tech | Air Monitoring Specialist | Air Monitoring. | Y |
| Jerry Fauchaux, Tetra Tech | Air Monitoring Specialist | Air Monitoring | N |
| | | | |
| | | | |

OVERSITE PERSONNEL

| Name | Position | Trade / Work Performed | Y/N |
|------------------------|-------------------|------------------------|-----|
| Scott McKeag, McGinley | Oversight | For NDEP | N |
| Devin Gordon, McGinley | Oversight | For NDEP | Y |
| Jennifer Coe, ATC | Field Observation | For AIG | Y |
| Ron Perry, ASW | Inspector | Liner Inspector | N |
| PBS&J, Survey | Surveyors | Surveying, QA | N |
| Brian Rakvica | Inspector | NDEP | N |

ON-SITE CONTRACTOR PERSONNEL

| Name | Company | Trade / Work Performed | Y/N |
|-----------------|--------------------------------|--|-----|
| Erik Geringer | Entact | Project Manager | Y |
| Josh Carrol | Entact | Asst Project Manager | Y |
| Russ Karnes | Entact | Eastside, Superintendent | Y |
| Michael Carlson | Entact | Engineer | Y |
| Joe Curilla | Entact | Health & Safety Officer | Y |
| Timothy Stadt | Entact | Health and Safety Technician | Y |
| | Entact | 26 Equipment Operators & Truck Drivers | Y |
| Ed Long | Entact | CAMU, Superintendent | Y |
| Adam Calveledge | Entact | Health & Safety Officer | Y |
| | | | |
| Rick McIntire | Entact | CSP, Safety | N |
| | American Asphalt | 3 Equipment operators | Y |
| | American Asphalt | 1 Superintendent | Y |
| | Environmental Specialties, Inc | Liner Superintendent | N |

DAILY PRODUCTION & QUALITY CONTROL REPORT

| Project No./Contract No. | Project Title / Location | Day of Report | Report No. |
|--------------------------|---|---------------|------------|
| 6389 | BRC Eastside Common Areas Soils Remediation | 24-Oct-08 | 110 |

| | | | | |
|--|--------------------------------|--------------------|---|--|
| | Environmental Specialties, Inc | Laborers/ Seammers | N | |
| | Kenney Survey | CAMU | N | |
| | ABC Survey | Eastside/CAMU | N | |
| | | | | |
| | | | | |
| | | | | |

ON-SITE EQUIPMENT

| Equipment | Vendor / Tag No. | Work Performed | | | | |
|-------------------------------|------------------|-------------------|---|---|---|---|
| CAT D400E Dump Truck (2) | | CAMU | - | - | - | - |
| JD D400 Dump Trucks (8) | | Eastside | | - | - | - |
| CAT 324D long stick excavator | | CAMU | - | - | - | - |
| CAT D8R Dozer with disc | | Eastside | | - | - | - |
| CAT 345 excavator | | Eastside | | - | - | - |
| CAT 330 Excavator | | Eastside | | - | - | - |
| Case double pan scrapers. | | Eastside | | - | - | - |
| CAT D6 LGP Dozer (2) | | Eastside | | | | - |
| Water Trucks (2) | | Eastside | | | | - |
| 637/631 Cat Scrapers (6) | | CAMU | | | | - |
| CAT 16H Grader | | CAMU | | | | - |
| CAT D-10 Dozer | | CAMU | | | | - |
| CAT Water Wagon | | CAMU | | | | - |
| CAT D-6 Dozer | | CAMU | | | | - |
| CAT 14H Grader | | CAMU | | | | - |
| Gradall | | CAMU | | | | - |
| JLG | | CAMU | | | | - |
| IR Smooth drum Roller | | CAMU, Phase 1 | | | | - |
| Tenent Street Sweeper | | Eastside and CAMU | | | | - |
| Bomag Smooth drum Roller | | CAMU, Phase 1 | | | | - |
| | | | | | | - |
| | | | | | | - |
| | | | | | | - |

MATERIAL HANDLING (ON-SITE DELIVERY / REMOVAL)

| Material | Vendor | Today | UOM | Purpose | Delivery Verification | | | |
|--------------|--------|-------|-------|-------------------|-----------------------|-----|------|------|
| | | | | | to date | Qty | Spec | Tags |
| GCL | CETCO | 0 | rolls | For CAMU, On site | | 207 | | |
| Geocomposite | Agru | 0 | rolls | For CAMU, On site | | 194 | | |
| Geomembrane | Agru | 0 | rolls | For CAMU, On site | | 82 | | |

WORK COMPLETED

Description of Work Executed Today

Eastside Mixing and Drying Activity:

- Day Shift:
- Worked on sprinkler system for dry pond.
- Install/modify tarps on haul trucks.
- Cleaned out decon sump.
- Conducted dust monitoring.
- Prepare areas for night haul. Prewater haul roads.
- Night shift: Continued hauling material from beta stockpile over to phase 1 in CAMU.

CAMU Activity:

Excavation

- Day:
- Phase II final grading on floor continued. Also continued rolling east slope using CAT 324 longstick excavator with roller.
- Hauled excess clean soils from phase II to base of 200,000cy stockpile using 631/637 scrapers - 3,200 cy - 3 scrapers.
- Phase II west slope cut down abandoned 12" well casing 3 feet below finish grade.
- Screened 1" minus soils.
- Prepare areas in Phase 1 for night haul. Prewater haul Roads.
- Western ditch soils hauled into Phase 1. Day Shift: 43 loads @ 22 cy/loads = 946 cy (1) truck.
- Night:
- Eastside Beta stockpile hauled to CAMU and placed into Phase 1. Night Shift: 183 loads @ 22 cy/loads = 4,026 cy (10) trucks.
- Spotter was located in phase I identifying oversized material, relocating and sizing as required.
- D6 dozer placed western ditch soils in 12" lift. Followed by (1) vibratory roller compacting (3) complete passes in Phase 1.
- Conducted dust monitoring.

Embankment

- Phase 1 embankment, complete.
- Phase 1 estimated cumulative embankment placed: 0 cy

Waste Placement

- Phase 1 estimated daily waste placed: 43 loads @ 22cy/load = 946 cy
- night shift placed: 183 loads @ 22cy/load = 4,026 cy
- Phase 1 estimated cumulative waste placed: 121,102 cy. Western Ditch Soils and Eastside beta stockpile.
- Phase 1 Operations Laver placed, completed. Cumulative total: 21.662

DAILY PRODUCTION & QUALITY CONTROL REPORT

| Project No./Contract No. | Project Title / Location | Day of Report | Report No. |
|--------------------------|---|---------------|------------|
| 6389 | BRC Eastside Common Areas Soils Remediation | 24-Oct-08 | 110 |
| | | | |

| |
|--|
| - Phase 1 Operations Layer placed, completed. Cumulative total: 21,662 |
|--|

Geosynthetics. Estimated cumulative installed quantity by Phase.

- Phase 1 GCL placed: 0 sf daily, 307,372 sf cumulative.
- Phase 1 Geomembrane: 0 sf daily, 307,372 sf cumulative
- Phase 1 Geocomposite: 0 sf daily, 307,372 sf cumulative.
- Phase 1 Geotextile: (0) sf daily, 69,340 sf cumulative.

HEALTH & SAFETY

| Description of Health & Safety Actions Taken Today / Safety Inspections Conducted | |
|---|--|
| 1 | 1. Inspected the site for any potential hazards or unsafe conditions. Found no significant issues. |
| 2 | 2. Reviewed the safety protocols and ensured all workers are following the correct procedures. |
| 3 | 3. Conducted a safety training session for the new workers, focusing on emergency response and hazard identification. |
| 4 | 4. Checked the maintenance records of the equipment used on the site. All equipment is in good working order. |
| 5 | 5. Monitored the weather conditions and advised workers to take appropriate precautions if a storm is forecasted. |
| 6 | 6. Ensured that all safety gear, including hard hats and safety vests, is being worn correctly by all personnel. |
| 7 | 7. Documented all safety observations and actions taken in the incident report log. |
| 8 | 8. Communicated with the local emergency services to ensure they are aware of the site location and potential risks. |
| 9 | 9. Reviewed the first aid kit and ensured it is fully stocked with necessary supplies. |
| 10 | 10. Conducted a final safety check before the end of the workday, ensuring all areas are secure and no hazards remain. |

Entact H&S Tailgates

Safety Topic, Eastside: Remote work, communication.

Safety Topic, CAMU: Scraper traffic and trucks backing up minimize.

Night shift: Discussed stop light on boulder highway and rules of the road. Truck warning lights in cab.

Safety Incidents: None.

Dust Incidents: None.

CONSTRUCTION QUALITY ASSURANCE & QUALITY CONTROL

| Description of Quality Control Actions Taken Today | | Quality Inspections Conducted |
|--|-----|-------------------------------|
| 1 | 2 | 3 |
| 4 | 5 | 6 |
| 7 | 8 | 9 |
| 10 | 11 | 12 |
| 13 | 14 | 15 |
| 16 | 17 | 18 |
| 19 | 20 | 21 |
| 22 | 23 | 24 |
| 25 | 26 | 27 |
| 28 | 29 | 30 |
| 31 | 32 | 33 |
| 34 | 35 | 36 |
| 37 | 38 | 39 |
| 40 | 41 | 42 |
| 43 | 44 | 45 |
| 46 | 47 | 48 |
| 49 | 50 | 51 |
| 52 | 53 | 54 |
| 55 | 56 | 57 |
| 58 | 59 | 60 |
| 61 | 62 | 63 |
| 64 | 65 | 66 |
| 67 | 68 | 69 |
| 70 | 71 | 72 |
| 73 | 74 | 75 |
| 76 | 77 | 78 |
| 79 | 80 | 81 |
| 82 | 83 | 84 |
| 85 | 86 | 87 |
| 88 | 89 | 90 |
| 91 | 92 | 93 |
| 94 | 95 | 96 |
| 97 | 98 | 99 |
| 100 | 101 | 102 |
| 103 | 104 | 105 |
| 106 | 107 | 108 |
| 109 | 110 | 111 |
| 112 | 113 | 114 |
| 115 | 116 | 117 |
| 118 | 119 | 120 |
| 121 | 122 | 123 |
| 124 | 125 | 126 |
| 127 | 128 | 129 |
| 130 | 131 | 132 |
| 133 | 134 | 135 |
| 136 | 137 | 138 |
| 139 | 140 | 141 |
| 142 | 143 | 144 |
| 145 | 146 | 147 |
| 148 | 149 | 150 |
| 151 | 152 | 153 |
| 154 | 155 | 156 |
| 157 | 158 | 159 |
| 160 | 161 | 162 |
| 163 | 164 | 165 |
| 166 | 167 | 168 |
| 169 | 170 | 171 |
| 172 | 173 | 174 |
| 175 | 176 | 177 |
| 178 | 179 | 180 |
| 181 | 182 | 183 |
| 184 | 185 | 186 |
| 187 | 188 | 189 |
| 190 | 191 | 192 |
| 193 | 194 | 195 |
| 196 | 197 | 198 |
| 199 | 200 | 201 |
| 202 | 203 | 204 |
| 205 | 206 | 207 |
| 208 | 209 | 210 |
| 211 | 212 | 213 |
| 214 | 215 | 216 |
| 217 | 218 | 219 |
| 220 | 221 | 222 |
| 223 | 224 | 225 |
| 226 | 227 | 228 |
| 229 | 230 | 231 |
| 232 | 233 | 234 |
| 235 | 236 | 237 |
| 238 | 239 | 240 |
| 241 | 242 | 243 |
| 244 | 245 | 246 |
| 247 | 248 | 249 |
| 250 | 251 | 252 |
| 253 | 254 | 255 |
| 256 | 257 | 258 |
| 259 | 260 | 261 |
| 262 | 263 | 264 |
| 265 | 266 | 267 |
| 268 | 269 | 270 |
| 271 | 272 | 273 |
| 274 | 275 | 276 |
| 277 | 278 | 279 |
| 280 | 281 | 282 |
| 283 | 284 | 285 |
| 286 | 287 | 288 |
| 289 | 290 | 291 |
| 292 | 293 | 294 |
| 295 | 296 | 297 |
| 298 | 299 | 300 |
| 301 | 302 | 303 |
| 304 | 305 | 306 |
| 307 | 308 | 309 |
| 310 | 311 | 312 |
| 313 | 314 | 315 |
| 316 | 317 | 318 |
| 319 | 320 | 321 |
| 322 | 323 | 324 |
| 325 | 326 | 327 |
| 328 | 329 | 330 |
| 331 | 332 | 333 |
| 334 | 335 | 336 |
| 337 | 338 | 339 |
| 340 | 341 | 342 |
| 343 | 344 | 345 |
| 346 | 347 | 348 |
| 349 | 350 | 351 |
| 352 | 353 | 354 |
| 355 | 356 | 357 |
| 358 | 359 | 360 |
| 361 | 362 | 363 |
| 364 | 365 | 366 |
| 3 | | |

Daily CQA Summary..

Monitored site haul road maintenance and construction of new 12" capped haul roads.
Monitored waste relocation and placement from the western ditch into Phase I during day shift.
Monitored waste placement of the Beta Ditch soils relocated from the Eastside into Phase I during night shift. Monitored proof rolling.
Monitored waste placement of Beta stockpile from Eastside to CAMU phase 1.
Monitor screening and placement as well as slope regrading of native soils in Phase II.
Monitored cutting of abandoned 12" well casing at phase II on west slope 3 feet below finish grade.
Continue updating project documents and database to facilitate reporting.

ISSUES AND/OR ITEMS OF DISCUSSION

Discussion of Issues / Concerns / Conversations / Topics

SITE VISITORS

[illegible]

| Report Prepared By / Title | Date Prepared | Signature |
|----------------------------|---------------|-----------|
|----------------------------|---------------|-----------|

Dick Laubinger, Construction Manager 24-Oct-08

| Report Prepared By / Title | Date Prepared | Signature |
|----------------------------|---------------|-----------|
|----------------------------|---------------|-----------|

Dick Laubinger, Construction Manager 24-Oct-08

| Report Prepared By / Title | Date Prepared | Signature |
|----------------------------|---------------|-----------|
|----------------------------|---------------|-----------|

Basic Remediation Company

875 West Warm Springs Road
Henderson, Nevada 89011

DAILY PRODUCTION & QUALITY CONTROL REPORT

| Project No./Contract No. | Project Title / Location | Day of Report | Report No. |
|--------------------------|--|---------------|------------|
| 6389 0 | BRC Eastside Common Areas Soils Remediation 0 | 24-Oct-08 | 110 |

DAILY PHOTO LOG

Photo 1



CAMU: Looking southeast western ditch and phase II floor phase II grading.

Photo 2



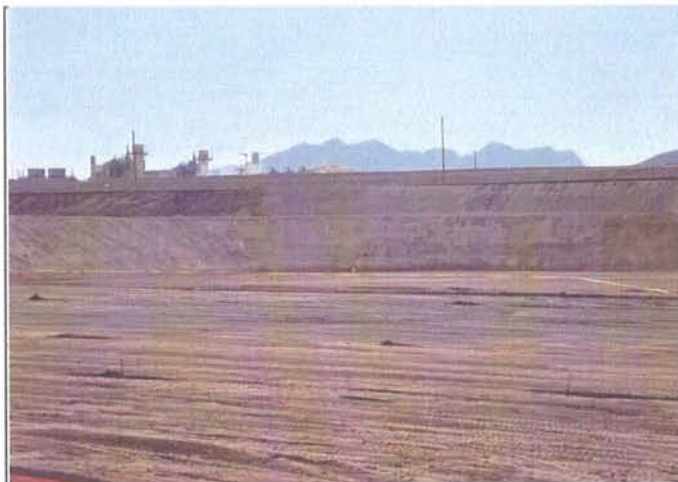
CAMU: Phase II long stick with roller working on slopes. Motorgrader grading western ditch floor.

Photo 3



CAMU: Southeast view western ditch and phase II..

Photo 4



CAMU: Phase II, Phase IIIA slope