

DAILY PRODUCTION & QUALITY CONTROL REPORT

| Project No./Contract No. | Project Title / Location | Day of Report | Report No. |
|--------------------------|---|---------------|------------|
| 6389 | BRC Eastside Common Areas Soils Remediation | 18-Dec-08 | 161 |

PROJECT POINTS OF CONTACT

| Position | Name | E-Mail Address | Phone No. |
|------------------------|-------------------|--------------------------------------|--------------|
| BRC PROJECT MANAGER | Lee Farris | lfarris@landwellco.com | 702-567-0400 |
| BRC PROJECT MANAGER | Ranajit Sahu | sahuron@earthlink.net | 702-567-0400 |
| CONST. PROJECT MANAGER | Dan Brennecke | Dan.Brennecke@westonsolutions.com | 970-260-5886 |
| Construction Manager | Richard Laubinger | Richard.Laubinger@westonsolution.com | 720-641-8660 |

WEATHER CONDITIONS

| Conditions | | | | Temp (°F) | Wind | Add'l Readings | |
|------------|-------------|----|-----------------------|-------------------|--------|-----------------|--------------|
| AM | Sunny/Clear | PM | Cloudy / Partly Sunny | Low 33 High 44 | S 6mph | Precip. (in/Dy) | Humidity (%) |

Additional Weather Comments

None

ON-SITE WESTON PERSONNEL

| Name | Position | Trade / Work Performed | Y/N |
|----------------|----------------------|-----------------------------------|-----|
| Dick Laubinger | Construction Manager | Construction Management Services. | Y |
| Dan Brennecke | Project Manager. CM | Construction Management Services. | N |
| Richard Davis | Project Engineer | Construction Management Services. | Y |
| Chris White | Assist. Const. Mgr | Construction Management Services. | Y |
| Wayne Hodgson | Assist. Const. Mgr | Construction Management Services. | Y |
| Kevin Cooke | Assist. Const. Mgr | Construction Management Services. | Y |
| June Laubinger | Admin Assistant | Construction Management Services. | Y |
| | | | |
| | | | |
| | | | |
| | | | |

ON-SITE GEOSYNTEC PERSONNEL

| Name | Position | Trade / Work Performed | Y/N |
|-----------------|------------------|------------------------|-----|
| Greg Corcoran | Design Engineer | Oversight | N |
| Dan Street | QA Manager | Oversight | Y |
| Jim Cox | QA/QC Supervisor | Oversight | N |
| Robecca Flynn | Engineer | Oversight | N |
| Wayne Wofford | QA/QC Tech | Oversight | N |
| Roland Derosier | QA/QC Tech | Oversight | Y |
| Camon Liddell | QA/QC Tech | Oversight | Y |
| Jeremy Osborn | QA/QC Tech | Oversight | Y |

ON-SITE SUPPORT PERSONNEL

| Name | Position | Trade / Work Performed | Y/N |
|----------------------------|---------------------------|--|-----|
| Doug Herlocker, Tetra Tech | Air Monitoring Specialist | Air Monitoring, Set up new areas at CAMU | N |
| Becky Dano, Tetra Tech | Air Monitoring Specialist | Air Monitoring. | Y |
| Jerry Fauchaux, Tetra Tech | Air Monitoring Specialist | Air Monitoring | N |
| | | | |
| | | | |
| | | | |

OVERSITE PERSONNEL

| Name | Position | Trade / Work Performed | Y/N |
|------------------------|-------------------|------------------------|-----|
| Mark Elzman, ASW | Inspector | Liner Inspector | N |
| Devin Gordon, McGinley | Oversight | For NDEP | Y |
| Dock Kim, ATC | Field Observation | For AIG | Y |
| Joe Ludlow, ASW | Inspector | Liner Inspector | N |
| Steve Morrow, ASW | Inspector | Liner Inspector | N |
| Brian Rakvica | Inspector | NDEP | N |
| PBS&J, Survey | Surveyors | Surveying, QA | Y |

ON-SITE CONTRACTOR PERSONNEL

| Name | Company | Trade / Work Performed | Y/N |
|-----------------|----------|--|-----|
| Erik Geringer | Entact | Project Manager | Y |
| Josh Carrol | Entact | Asst Project Manager | Y |
| Russ Karnes | Entact | Eastside, Superintendent | Y |
| Michael Carlson | Entact | Engineer | Y |
| Joe Curilla | Entact | Health & Safety Officer | Y |
| Timothy Stadt | Entact | Health and Safety Technician | Y |
| | Entact | 26 Equipment Operators & Truck Drivers | Y |
| Ed Long | Entact | CAMU, Superintendent | Y |
| Lance Bruce | Entact | Health & Safety Officer | Y |
| Terry Harper | Entact | CAMU, Superintendent | Y |
| Rick McIntire | Entact | CSP, Safety | Y |
| Dale Walsh | Converse | CSP, Safety | N |

DAILY PRODUCTION & QUALITY CONTROL REPORT

| Project No./Contract No. | Project Title / Location | Day of Report | Report No. |
|--------------------------|---|---------------|------------|
| 6389 | BRC Eastside Common Areas Soils Remediation | 18-Dec-08 | 161 |

| | | | | |
|---------------|--------------------------------|------------------------|---|--|
| Eil Blackburn | Entact | Asst Project Manager | Y | |
| | Environmental Specialties, Inc | 1 Liner Superintendent | Y | |
| | Environmental Specialties, Inc | 12 Laborers/ Seamers | Y | |
| | Kenney Survey | CAMU | N | |
| | ABC Survey | Eastside/CAMU | N | |
| | | | | |
| | | | | |
| | | | | |
| | | | | |

ON-SITE EQUIPMENT

| Equipment | Vendor / Tag No. | Work Performed | | | | |
|-------------------------------|------------------|------------------------------|---|---|---|---|
| CAT D400E Dump Truck (10) | | CAMU | - | - | - | - |
| JD D400 Dump Trucks (9) | | Eastside | - | - | - | - |
| CAT 324D long stick excavator | | CAMU | - | - | - | - |
| CAT D8R Dozer with disc | | Eastside | - | - | - | - |
| CAT 345 excavator, (3) | | Eastside | - | - | - | - |
| CAT 330 Excavator | | Eastside | - | - | - | - |
| Case double pan scrapers. | | Eastside | - | - | - | - |
| CAT D6 LGP Dozer (1) | | Eastside | | | | - |
| Water Trucks (2) | | Eastside | | | | - |
| 637/631 Cat Scrapers (2) | | CAMU | | | | - |
| CAT 16H Grader | | CAMU | | | | - |
| CAT D-10 Dozer | | CAMU | | | | - |
| CAT Water Trucks (2) | | CAMU | | | | - |
| CAT D-6 Dozer, (2) | | CAMU | | | | - |
| CAT 14H Grader | | CAMU | | | | - |
| Gradall | | CAMU | | | | - |
| JLG | | CAMU | | | | - |
| IR Smooth drum Roller | | CAMU, Phase 1 | | | | - |
| Tenent Street Sweeper | | Eastside and CAMU | | | | - |
| Bomag Smooth drum Roller | | CAMU, Phase 1 | | | | - |
| Chieftain 1400 Powerscreener | | Eastside, screening 1" minus | | | | - |
| | | | | | | - |
| | | | | | | |
| | | | | | | |

MATERIAL HANDLING (ON-SITE DELIVERY / REMOVAL)

| Material | Vendor | Today | UOM | Purpose | Delivery Verification | | | |
|--------------|--------|-------|-------|-------------------|-----------------------|-----|------|------|
| GCL | CETCO | 0 | rolls | For CAMU, On site | to date | Qty | Spec | Tags |
| Geocomposite | Agru | 0 | rolls | For CAMU, On site | | 599 | | |
| Geomembrane | Agru | 0 | rolls | For CAMU, On site | | 192 | | |

WORK COMPLETED

Description of Work Executed Today

Eastside Mixing and Drying Activity:

- Day Shift:
 - Mixed wet material into dry ponds
 - Prepared for night haul operations.
 - Cleaned out HDPE pipe to prepare to start pumping water again.
- Night Shift:
 - Continue hauling material from HP-3 stockpile and PUA-4 stockpile.

CAMU Activity:

- Day Shift:
 - Continued first lift push-out of 1-inch minus on the BMI North Landfill
 - Continued 6" scrape on Phase IIIB
 - Continued screening material at 200,000 cy stockpile.
 - Prepared for night haul operations.
- Night Shift:
 - Started installation of the wash bath for trucks
 - Screened material at the 200,000cy stockpile using the powerscreen
 - Continued first lift push-out of 1-inch minus on the BMI North Landfill

Embankment

- Phase 1 embankment, complete.
- Phase 1 estimated cumulative embankment placed: 0 cy
- Phase II embankment, complete.

Waste Placement

- Phase 1 estimated daily waste placed: 66 loads @ 20cy/load = 1,320cy.
- night shift placed: 0 loads @ 18cy/load = 0 (0 trucks).
- Phase 1 estimated cumulative waste placed: 234,016cy. Western Ditch, NE Equilization, Eastside beta stockpile, Phase IIIB and PUA-4, PUB-3, HP-3.
- Phase 1 Operations Layer placed, completed. Cumulative total: 21,662
- Phase 2 estimated night shift placed: 0 loads @ 18cy/load = 0 cy.
- Phase 2 Operations Layer placed, daily: 0 cy. Adjusted cy per truckload from 20cy to 18cy based on survey. Cumulative total: 37,188 cy.

Geosynthetics Estimated cumulative installed quantity by Phase

DAILY PRODUCTION & QUALITY CONTROL REPORT

| Project No./Contract No. | Project Title / Location | Day of Report | Report No. |
|--------------------------|---|---------------|------------|
| 6389 | BRC Eastside Common Areas Soils Remediation | 18-Dec-08 | 161 |
| | | | |

Geosynthetics. Estimated cumulative installed quantity by Phase.

- Phase 1 GCL placed: 0 sf daily, 307,372 sf cumulative.
- Phase 1 Geomembrane: 0 sf daily, 307,372 sf cumulative
- Phase 1 Geocomposite: 0 sf daily, 307,372 sf cumulative.
- Phase 1 Geotextile: (0) sf daily, 69,340 sf cumulative.
- Phase 2 GCL placed: (0) sf daily, 498,468 sf cumulative.
- Phase 2 Geomembrane: (0) sf daily, 498,468 sf cumulative.
- Phase 2 Geocomposite: (0) sf daily, 520,592 sf cumulative.
- BMI North Landfill GCL placed: (0) sf daily, 330,638 sf cumulative.
- BMI North Landfill Geomembrane: (0) sf daily, 330,638 sf cumulative.
- BMI North Landfill Geocomposite: (95,700) sf daily, (116,000) sf cumulative.

HEALTH & SAFETY

Description of Health & Safety Actions Taken Today / Safety Inspections Conducted

Entact H&S Tailgates

Safety Topic: Eastside: Winter driving conditions.

Safety Topic: CAMU, Day: Winter driving conditions.

Eastside and CAMU, Night shift: Working in cold conditions.

Safety Incidents: None.

Dust Incidents: None.

CONSTRUCTION QUALITY ASSURANCE & QUALITY CONTROL

Description of Quality Control Actions Taken Today / Quality Inspections Conducted

Daily CQA Summary..

Monitored installation of waste material in Phase I on the.

Monitored protective cover placement on BMI North Landfill.

Monitored delivery and offloading of RCP storm pipe.

Continued review of and updating of project documents and database to facilitate reporting.

| ISSUES AND/OR ITEMS OF DISCUSSION | |
|-----------------------------------|--|
| 1 | 1. The first item of discussion is the importance of the study. |
| 2 | 2. The second item of discussion is the methodology used in the study. |
| 3 | 3. The third item of discussion is the results of the study. |
| 4 | 4. The fourth item of discussion is the conclusion of the study. |
| 5 | 5. The fifth item of discussion is the limitations of the study. |
| 6 | 6. The sixth item of discussion is the future research. |
| 7 | 7. The seventh item of discussion is the significance of the study. |
| 8 | 8. The eighth item of discussion is the contribution of the study. |
| 9 | 9. The ninth item of discussion is the practical application of the study. |
| 10 | 10. The tenth item of discussion is the overall impact of the study. |

Discussion of Issues / Concerns / Conversations / Topics

None

SITE VISITORS

[illegible]

| | | |
|----------------------------|---------------|-----------|
| Report Prepared By / Title | Date Prepared | Signature |
|----------------------------|---------------|-----------|

Chris White, Assistant Construction Manager 19-Dec-08

Date Prepared
Signature

19-Dec-08

Signature _____

Basic Remediation Company

875 West Warm Springs Road
Henderson, Nevada 89011

DAILY PRODUCTION & QUALITY CONTROL REPORT

| Project No./Contract No. | Project Title / Location | Day of Report | Report No. |
|--------------------------|--|---------------|------------|
| 6389 0 | BRC Eastside Common Areas Soils Remediation 0 | 18-Dec-08 | 161 |

DAILY PHOTO LOG

Photo 1



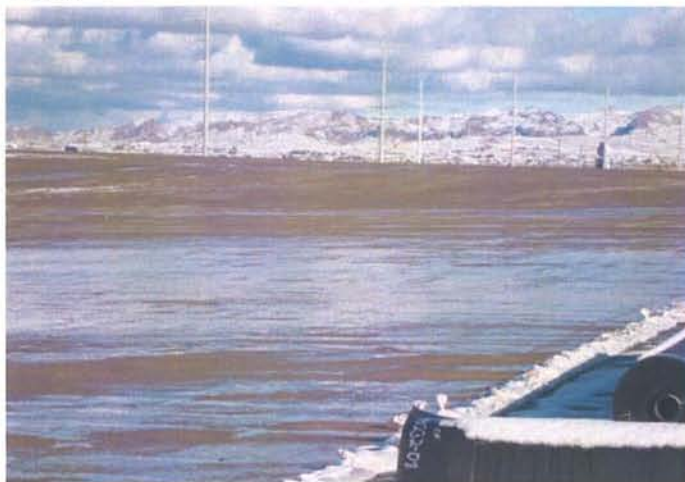
CAMU: BMI Landfill North, 3 foot road construction with 1-inch minus material.

Photo 2



CAMU: BMI North Landfill, north slope.

Photo 3



CAMU: BMI Landfill North, water runoff to the north.

Photo 4



CAMU: BMI Landfill North, first lift pushout.