



DAILY PRODUCTION & QUALITY CONTROL REPORT

Project No./Contract No.	Project Title / Location	Day of Report	Report No.
6389	BRC Eastside Common Areas Soils Remediation	25-Feb-09	227

PROJECT POINTS OF CONTACT

Position	Name	E-Mail Address	Phone No.
BRC PROJECT MANAGER	Lee Farris	farris@landwellco.com	702-567-0400
BRC PROJECT MANAGER	Ranjit Sahu	sahuron@earthlink.net	702-567-0400
CONST. PROJECT MANAGER	Dan Brennecke	Dan.Brennecke@westonsolutions.com	970-260-5886
Construction Manager	Richard Laubinger	Richard.Laubinger@westonsolutions.com	720-841-8660

WEATHER CONDITIONS

Conditions		Temp (°F)	Wind	Adt'l Readings
AM	Sunny/Clear	Low 51		Precip. (in/hr)
PM	Sunny/Clear	High 72	SW 15mph	Humidity (%)

Additional Weather Comments:

Winds in PM 10 - 20 mph.

ON-SITE WESTON PERSONNEL

Name	Position	Trade / Work Performed	Y/N
Dick Laubinger	Construction Manager	Construction Management Services	Y
Dan Brennecke	Project Manager, CM	Construction Management Services	N
Richard Davis	Project Engineer	Construction Management Services	Y
Chris White	Assist. Const. Mgr	Construction Management Services	Y
Wayne Hodgson	Assist. Const. Mgr	Construction Management Services	Y
Kevin Cooke	Assist. Const. Mgr	Construction Management Services	Y
Juno Laubinger	Admin Assistant	Construction Management Services	Y

ON-SITE GEOSYNTEC PERSONNEL

Name	Position	Trade / Work Performed	Y/N
Greg Corcoran	Design Engineer	Oversight	N
Dan Street	QA Manager	Oversight	Y
Jim Cox	QA/QC Supervisor	Oversight	N
Rebecca Flynn	Engineer	Oversight	N
Sam Campbell-Nelson	QA/QC Tech	Oversight	Y
Roland Derosier	QA/QC Tech	Oversight	Y
Camron Liddell	QA/QC Tech	Oversight	Y
Jeremy Osborn	QA/QC Tech	Oversight	Y
Victor Heredia	QA/QC Tech	Oversight	Y

ON-SITE SUPPORT PERSONNEL

Name	Position	Trade / Work Performed	Y/N
Doug Herlocker, Tetra Tech	Air Monitoring Specialist	Air Monitoring	N
Becky Dano, Tetra Tech	Air Monitoring Specialist	Air Monitoring	Y
Jerry Fauchoux, Tetra Tech	Air Monitoring Specialist	Air Monitoring	N

OVERSITE PERSONNEL

Name	Position	Trade / Work Performed	Y/N
Mark Eitzman, ASW	Inspector	Linear Inspector	Y
Devin Gordon, McGinley	Oversight	For NDEP	Y
Dock Kim, ATC	Field Observation	For AIG	N
Joe Ludlow, ASW	Inspector	Linear Inspector	N
Steve Morrow, ASW	Inspector	Linear Inspector	N
Brian Rakvica	Inspector	NDEP	N
PBS&J, Survey	Surveyors	Survey	N

ON-SITE CONTRACTOR PERSONNEL

Name	Company	Trade / Work Performed	Y/N
Erik Geringer	Entact	Project Manager	Y
Jeremy Schissler	Entact	Acting Project Manager	Y
Josh Carroll	Entact	Asst Project Manager	Y
Michael Carlson	Entact	Engineer	Y
Joe Curilla	Entact	Health & Safety Officer	Y
Timothy Stadt	Entact	Health and Safety Technician	Y
Ed Long	Entact	48 Equipment Operators & Truck Drivers	Y
Lance Bruce	Entact	CAMU, Superintendent	Y
Terry Harper	Entact	Health & Safety Officer	Y
Rick McIntire	Entact	CSP, Safety	Y
Dale Walsh	Converse	CSP, Safety	N
Eli Blackburn	Entact	Asst Project Manager	Y
	Environmental Specialties, Inc	1 Liner Superintendent	N
	Environmental Specialties, Inc	12 Laborers/ Seamers	N
Roger Wagner	Entact	Eastside, Superintendent, Night Shift.	Y
	ABC Survey	Eastside/CAMU, Mohawk Drive.	N
	Foundation Pile, Inc.	Demobilized.	N

ON-SITE EQUIPMENT

Equipment	Vendor / Tag No.	Work Performed				
CAT D400E Dump Truck (10)		CAMU	-	-	-	-
JD D400 Dump Trucks (9)		Eastside	-	-	-	-
CAT 324D long stick excavator		Eastside	-	-	-	-
CAT D8R Dozer with disc		Eastside	-	-	-	-
CAT 345 excavators, (5)		Eastside and CAMU	-	-	-	-
CAT 330 Excavator		CAMU	-	-	-	-
Case double pan scrapers.		Eastside, demobilized.	-	-	-	-
CAT D6 LGP Dozer (1)		Eastside	-	-	-	-
Water Trucks (2)		Eastside	-	-	-	-
JD450 Dozer		CAMU	-	-	-	-
CAT 16H Grader		CAMU	-	-	-	-
CAT D-10 Dozer		CAMU	-	-	-	-
Water Trucks (2)		CAMU	-	-	-	-
CAT D-6 Dozer, (2)		CAMU	-	-	-	-
CAT 14H Grader		CAMU	-	-	-	-
Gradaal		CAMU	-	-	-	-
JLG		CAMU	-	-	-	-
IR Smooth drum Roller		CAMU, Phase 1	-	-	-	-
Tenent Street Sweeper		Eastside and CAMU	-	-	-	-
Bomag Smooth drum Roller		CAMU, Phase 1	-	-	-	-
Chieftain 1400 Powerscreener		Eastside, screening 1' & 6" minus	-	-	-	-
(1) Crane		Sheet pile driving. Installed, (1) Crane remains.	-	-	-	-

MATERIAL HANDLING (ON-SITE DELIVERY / REMOVAL)

Material	Vendor	Today	UOM	Purpose	On Site	Off Site	Other
GCL	CETCO	0	rolls	For CAMU, On site	909		

DAILY PRODUCTION & QUALITY CONTROL REPORT

Project No./Contract No.	Project Title / Location	Day of Report	Report No.
6389	BRC Eastside Common Areas Soils Remediation	25-Feb-09	227
Geocomposite	Agri	78 rolls	For CAMU, On site
Geomembrane	Agri	66 rolls	For CAMU, On site
			2370
			404

WORK COMPLETED

Description of Work Executed Today:

Eastside Mixing and Drying Activity:

Day Shift:

- PUA-4 & 5 excavating berm and hauling to beta stockpile and SW-2.
- PUD-4, continue screening for operations layer.
- SW-2 continue mixing materials
- HP-2, stockpiling material for loadout with longstick excavator.
- Continue installing haul truck modifications.

Night Shift:

- Continued excavating and hauled material from the beta ditch.
- Continued hauling 1" minus operations layer material.

CAMU Activity:

- Day Shift:

- Continued grading N. BMI Landfill.
- Continued excavating NW-2, waste included more paper products.
- Continued excavating NW-3 second excavator, loading out where possible. Activating pyrophoric substances in trench periodically.
- Continued the installation of 42" RCP storm drain system.
- Phase IIIA, continued placing operations layer.

- Night Shift:

- Continued placing material in Phase II.
- Continue hauling operations layer material to be placed in Phase IIIA.

Embankment

- Phase I embankment, complete.
- Phase I estimated cumulative embankment placed: 0 cy
- Phase II embankment, complete.

Other:

Inspections: Slit trenches, NW-2, Waste encountered paper products with soils.
NW-3, Waste continued to be debris and with small amounts of paper.

Estimated Waste Placement (Estimated volumes do not account for shrinkage due to loss of moisture on wet ponds)

Phase I

Previous Daily Cumulative =	291,200 cy
Operations layer placed (completed) for liner certification. = 21,662	0 cy
Daily Day shift waste placed today: Phase IV,V escape & Phase IIIB trench excavation. 0 loads @ 20 cy/load (0 trucks) =	0 cy
Daily Night shift placed today: 0 loads @ 18cy/load (0 trucks) =	0 cy
To Date Phase I estimated cumulative waste placed =	291,200 cy

Phase II

Previous Daily Cumulative =	315,122 cy
Operations layer placed (completed) for liner certification. = 37,188	0 cy
Daily Day shift waste placed today: Phase IIIB (0) loads @ 18 cy/load (0) trucks =	0 cy
Daily Day shift waste placed today: Slit Trenches, (111) loads @ 18cy/load (4) trucks =	1,998 cy
Daily Night shift placed today: (75) loads @ 18cy/load (8) trucks =	1,350 cy
To Date Phase II estimated cumulative waste placed =	318,470 cy

Phase IIIA

Previous Daily Cumulative =	6,552 cy
Operations layer placed directly in Phase IIIA today: (0) loads @ 18 cy/load (0) trucks =	0 cy
Operations layer staged in Phase IIIA for day placement (ongoing) for liner certification: (79) loads @ 18 cy/load (10) trucks =	1,422 cy
Daily Day shift waste placed today: (0) loads @ 18 cy/load (0) trucks =	0 cy
Daily Night shift waste placed today: (0) loads @ 18cy/load (0) trucks =	0 cy
To Date Phase IIIA estimated cumulative waste placed =	7,974 cy

Cummulative Total To Date All Phases =	Estimated Waste at Completion (cy)	% Complete
617,644 cy	2,050,000	30.1%

Geosynthetics Placed

Phase I (complete)	Previous	Placed	Cummulative
GCL	307,372	0	307,372
Geomembrane	307,372	0	307,372
Geocomposite	307,372	0	307,372
Geotextile	69,340	0	69,340
Phase II (complete)	Previous	Placed	Cummulative
GCL	498,468	0	498,468
Geomembrane	498,468	0	498,468
Geocomposite	520,592	0	520,592
Geotextile	0	0	0
Phase IIIA	Previous	Placed	Cummulative
GCL	221,000	0	221,000
Geomembrane	221,000	0	221,000
Geocomposite	221,000	0	221,000
Geotextile	20,000	0	20,000
Phase IIIB	Previous	Placed	Cummulative
GCL	0	0	0
Geomembrane	0	0	0
Geocomposite	0	0	0
Geotextile	0	0	0
Phase IV	Previous	Placed	Cummulative
GCL	0	0	0
Geomembrane	0	0	0
Geocomposite	0	0	0
Geotextile	0	0	0
Phase V	Previous	Placed	Cummulative
GCL	0	0	0
Geomembrane	0	0	0
Geocomposite	0	0	0
Geotextile	0	0	0

DAILY PRODUCTION & QUALITY CONTROL REPORT			
Project No./Contract No.	Project Title / Location	Day of Report	Report No.
6389	BRC Eastside Common Areas Soils Remediation	25-Feb-09	227

BMI North			
GCL	1,111,468	0	1,111,468
Geomembrane	1,111,468	0	1,111,468
Geocomposite	1,111,468	0	1,111,468
BMI South			
GCL	0	0	0
Geomembrane	0	0	0
Geocomposite	0	0	0

Debris Storage Area (complete)			
Geomembrane	12,000	0	12,000
CAMU Cover			
GCL	0	0	0
Geomembrane	0	0	0
Geocomposite	0	0	0

HEALTH & SAFETY	
Description of Health & Safety Actions Taken Today: Safety Inspectors coordinated	
<p>Safety Topic:</p> <p>Eastside Day: Discussed deconing trucks leaving the exclusion zone.</p> <p>CAMU Day: Discussed deconing trucks leaving the exclusion zone.</p> <p>CAMU & Eastside Night Shift: Experienced drivers mentor new drivers, look out for each other.</p>	

CONSTRUCTION QUALITY ASSURANCE & QUALITY CONTROL	
Description of Quality Control Actions Taken Today - Quality Inspectors Concurred	
<p><u>Daily COA Summary:</u></p> <p>Monitor waste placement into Phase II Landfill during the day shift.</p> <p>Monitor waste placement into Phase II Landfill during the night shift.</p> <p>Monitor the placement of operational fill in Phase IIIA.</p> <p>Monitor the installation of RCP storm drain piping system at the CAMU.</p> <p>Inventory incoming geosynthetics 66 rolls of geomembrane and 78 rolls of geocomposite.</p>	

ISSUES AND/OR ITEMS OF DISCUSSION	
Discussion of Issues / Concerns / Comments/ Items / Topics	
<p>Night shift discontinued hauling approximately 3am. Street sweeper had mechanical problems.</p>	

[illegible]

Weather Table	
Sunny/Clear	☼
Sunny / Party Cloudy	☼☼
Cloudy / Partly Sunny	☼☼☼
Cloudy	☼☼☼☼
Overcast	☼☼☼☼☼
Light Rain	☼☼☼☼☼☼
Rain	☼☼☼☼☼☼☼
Thunderstorms	☼☼☼☼☼☼☼☼
Snow	☼☼☼☼☼☼☼☼☼

Basic Remediation Company

875 West Warm Springs Road
Henderson, Nevada 89011

DAILY PRODUCTION & QUALITY CONTROL REPORT

Project No./Contract No.	Project Title / Location	Day of Report	Report No.
6389 0	BRC Eastside Common Areas Soils Remediation 0	25-Feb-09	227

DAILY PHOTO LOG

Photo 1



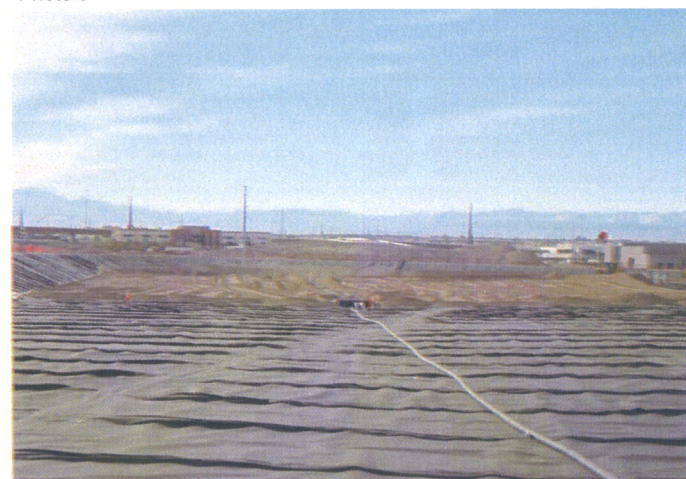
CAMU: Slit trench, NW-2.

Photo 2



CAMU: Slit trench NW-1, looking east.

Photo 3



CAMU: Phase IIIA, operations layer placement.

Photo 4



CAMU: 42" RCP, storm drain pipe system.