

Project No./Contract No.	Project Title / Location	Day of Report	Report No.
6389	BRC Eastside Common Areas Soils Remediation	13-Feb-10	571

Position	Name	E-Mail Address	Phone No.
BRC PROJECT MANAGER	Lee Farris	lfarris@landwellco.com	702-567-0400
BRC PROJECT MANAGER	Ranjait Sahu	sahuraj@earthlink.net	702-567-0400
CONST. PROJECT MANAGER	Dan Brennecke	Dan.Brennecke@westonsolutions.com	970-260-5886
Construction Manager	Richard L Aubiner	Richard.L.aubiner@westonsolution.com	720-641-8660

Conditions				Temp (°F)		Wind		Add'l Readings	
AM	Sunny/Clear	PM	Sunny/Clear	Low	41			Precip. (in/dy)	0
				High	64	NE	4mph	Humidity (%)	0
Additional Weather Comments									

[illegible]

Name	Position	Trade / Work Performed	Y/N
Greg Corcoran	Design Engineer	Oversight	N
Dan Street	QA Manager	Oversight	N
Jim Cox	QA/QC Supervisor	Oversight	Y
Rebecca Flynn	Engineer	Oversight	N
Camron Littlefield	QA/QC Tech	Oversight	Y
Graciano Malina	QA/QC Tech	Oversight	Y
Victor Heredia	QA/QC Tech	Oversight	N

[illegible]

Name	Position	Trade / Work Performed	Y/N
Bob Meyer, ASW	Inspector	Liner Inspector,	N
Devin Gordon, MGA	Oversight	For NDEP	N
Brian Rakivca	Inspector	NDEP	N
Steve Morrow, ASW	Inspector	Liner Inspector	N
PBS&J, Survey	Surveyors	Survey	N

[illegible][illegible]

Material	Vendor	Today	UOM	Purpose	Delivery Verification			
					to date	Qty	Spec	Tags
GCL	CETCO	0	rolls	For CAMU, On site		2271		
Geocomposite	Agru	0	rolls	For CAMU, On site		2442		
Geomembrane	Agru	0	rolls	For CAMU, On site		558		

Estimate of Work Executed Today

Eastside Mixing and Driving Activity:

Day Shift:

- Continued final scrape eastwest Beta ditch floor, south of SC-1 ponds and south of HP ponds. Hauling to Beta Ditch stockpile.
- Began compacting parking lot and hauling to Beta Ditch stockpile.
- Continued string trees, for placement in the CAMU. Sorting miscellaneous steel in soil pile.

Night Shift:

- Hauled material from the Beta ditch stockpiles.

DAILY PRODUCTION & QUALITY CONTROL REPORT			
Project No./Contract No.	Project Title / Location	Day of Report	Report No.
6389	BRC Eastside Common Areas Soils Remediation	13-Feb-10	571
<p>CAMU Activity:</p> <p>- Day Shift</p> <ul style="list-style-type: none"> - Continued power screening 1" and 6" minus soils at 200,000 cy stockpile. - ESI liner crew installed geosynthetics on ramp and west slope of Phase I and Phase IIIB. - Placing 1" and 6" final cover soils on Phase I, and Phase IIIB. - Placed interim cover on Phase IV. - Graded waste in Phase IV and Phase V. - Finish grading Phase I and Phase II. - Entact monitored sumps. <p>- Night Shift:</p> <ul style="list-style-type: none"> - Placed material in Phase IV and Phase V. <p>Embankment</p> <ul style="list-style-type: none"> - Phase I embankment, complete. - Phase I estimated cumulative embankment placed: - Phase II embankment , complete. <p>Sump/Vadose Monitoring:</p> <p>Phase I: LCRS Sump: Measurement taken: (1,300) Water Pumped: (N/A). Vadose: Measurement taken: (0.583) Water Pumped: (N/A).</p> <p>Phase II: LCRS Sump: Measurement taken: (2,482) Water Pumped: (N/A). Vadose: Measurement taken: (N/A) Water pumped: (N/A).</p> <p>Phase IIIB: LCRS Sump: Measurement taken: (N/A) Water Pumped: (N/A). Vadose: Measurement taken: (N/A) Water Pumped: (N/A).</p> <p>Phase V: LCRS Sump: Measurement taken: (2,217) Water pumped: (465 gal). Vadose: Measurement taken: (N/A) Water Pumped: (N/A).</p> <p>Inspections: CAMU: N/A.</p> <p><i>Fastlane: Fence reinstallation inspection: All secure</i></p>			

Estimated Waste Placement (Estimated volumes do not account for shrinkage due to loss of moisture on wet ponds)

Phase I		
Previous Daily Cumulative =	372,886	cy
Operations layer placed (completed) for liner certification. = 21,662	0	cy
Daily Day shift waste placed today: Galleria/Eastside, (0) loads @ 17 cy/load (0) trucks =		cy
Daily Night shift placed today: (0) loads @ 21cy/load (0) trucks =		cy
To Date Phase I estimated cumulative waste placed =	372,886	cy
Phase II		
Previous Daily Cumulative =	1,072,405	cy
Operations layer placed (completed) for liner certification. = 37,188		cy
Daily Day shift waste placed today: Galleria Scrape, (0) loads @ 17 cy/load (0) trucks =		cy
Daily Day shift waste placed today: Eastside Waste, (0) loads @ 17cy/load (0) trucks =		cy
Daily Night shift placed today: (0) loads @ 21 cy/load (0) trucks =		cy
To Date Phase II estimated cumulative waste placed =	1,072,405	cy
Phase IIIA		
Previous Daily Cumulative =	222,174	cy
Operations layer placed directly in Phase IIIA today: (0) loads @ 18 cy/load (0) trucks =		cy
Operations layer placed (completed for liner certification = 21,276)		cy
Daily Day shift waste placed today: (0) loads @ 17 cy/load (0) trucks =		cy
Daily Night shift waste placed today: (0) loads @ 21cy/load (0) trucks =		cy
To Date Phase IIIA estimated cumulative waste placed =	222,174	cy
Phase IIIB		
Previous Daily Cumulative =	439,547	cy
Operations layer placed (completed) for liner certification. = 21,978		cy
Daily Day shift waste placed from: Galleria/Eastside (0) loads @ 17 cyld (0) trucks =		cy
Daily Night shift waste placed today: (0) loads @ 21cy/load (0) trucks =		cy
To Date Phase IIIB estimated cumulative waste placed =	439,547	cy
Phase IV		
Previous Daily Cumulative =	466,733	cy
Operations layer placed (completed) for liner certification = 37,314		cy
Daily Day shift waste placed today: (0) loads @ 17 cy/load (0) trucks =		cy
Daily Night shift waste placed today: (147) loads @ 21cy/load (11) trucks =	3,087	cy
To Date Phase IV estimated cumulative waste placed =	469,820	cy
Phase V		
Previous Daily Cumulative =	458,461	cy
Operations layer placed (completed) for liner certification = 40,284		cy
Daily Day shift waste placed from: Eastside, (0) loads @ 17 cy/load (0) trucks =		cy
Daily Night shift waste placed today: (183) loads @ 21cy/load (13) trucks =	3,843	cy
To Date Phase V estimated cumulative waste placed =	462,304	cy
11/01/09 Volume Adjustment to Correlate with CAMU Placement Survey	123,750	cy
12/31/09 Volume Adjustment to Correlate with CAMU Placement Survey	56,834	cy

	Estimated Waste at Completion (cy)	% Complete
Cumulative Total To Date All Phases =	3,219,720 cy	111.0%

Geosynthetics Placed

Phase I (complete)	Previous	Placed	Cumulative Placed
GCL	307,372	0	307,372
Geomembrane	307,372	0	307,372
Geocomposite	307,372	0	307,372
Geotextile	69,340	0	69,340
Phase II (complete)			
GCL	498,468	0	498,468
Geomembrane	498,468	0	498,468
Geocomposite	520,592	0	520,592
Geotextile	0	0	0
Phase IIIA			
GCL	221,000	0	221,000
Geomembrane	221,000	0	221,000
Geocomposite	221,000	0	221,000
Geotextile	20,000	0	20,000
Phase IIIB			
GCL	340,535	0	340,535
Geomembrane	340,535	0	340,535
Geocomposite	340,535	0	340,535
Geotextile	50,000	0	50,000
Phase IV			
GCL	459,942	0	459,942
Geomembrane	459,942	0	459,942
Geocomposite	459,952	0	459,952
Geotextile	12,390	0	12,390
Phase V			

DAILY PRODUCTION & QUALITY CONTROL REPORT

Project No./Contract No.	Project Title / Location	Day of Report	Report No.
6389	BRC Eastside Common Areas Soils Remediation	13-Feb-10	571

GCL	558,653	0	558,653
Geomembrane	558,653	0	558,653
Geocomposite	558,653	0	558,653
Geotextile	15,925	0	15,925

BMI North			
GCL	1,111,468	0	1,111,468
Geomembrane	1,111,468	0	1,111,468
Geocomposite	1,111,468	0	1,111,468

BMI South			
GCL	177,000	0	177,000
Geomembrane	177,000	0	177,000
Geocomposite	177,000	0	177,000

Debris Storage Area (complete)

Geomembrane	12,000	0	12,000
-------------	--------	---	--------

CAMU Cover			
GCL	1,038,400	32,000	1,070,400
Geomembrane	1,038,400	32,000	1,070,400
Geocomposite	881,400	0	881,400

		Total Geosynthetics for CAMU Basic Scope (sf)	% Complete of Basic Scope	Total Geosynthetics for CAMU Basic Scope +Option Scope	% Complete of Basic Scope + Option Scope
Geosynthetic System Cumulative Total To Date All CAMU Phases	4,756,838	4,151,232	88.8%	6,534,075	72.8%

HEALTH & SAFETY

Description of Health & Safety Actions Taken Today / Safety Inspections Conducted

Safety Topic:

Eastside Day: Discussed: Staying aware of surroundings.
CAMU Day: Discussed: Staying aware of surroundings.
Night shift CAMU & Eastside: Make sure to report any incidents or damage.

CONSTRUCTION QUALITY ASSURANCE & QUALITY CONTROL

Description of Quality Control Actions Taken Today / Quality Inspections Conducted

Daily CQA Summary

Monitor waste placement of eastside material in the CAMU on the night shift.
Monitor installation of interim cover at the CAMU.
Monitor installation of final cover at the CAMU.
Monitor the installation of geosynthetics.

ISSUES AND/OR ITEMS OF DISCUSSION

Discussion of Issues / Concerns / Conversations / Topics

SITE VISITORS

Name	Organization	Purpose of Visit			

Report Prepared By / Title

Richard Laubinger, Construction Manager

Date Prepared

13-Feb-10

Signature

Weather Table

Sunny/Clear	☀
Sunny / Partly Cloudy	☀☁
Cloudy / Partly Sunny	☁☀
Cloudy	☁
Overcast	☁☁
Light Rain	☔
Rain	☔☔
Thunderstorms	⚡
Snow	❄

Basic Remediation Company

875 West Warm Springs Road
Henderson, Nevada 89011

DAILY PRODUCTION & QUALITY CONTROL REPORT

Project No./Contract No.	Project Title / Location	Day of Report	Report No.
6389 0	BRC Eastside Common Areas Soils Remediation 0	13-Feb-10	571

DAILY PHOTO LOG

Photo 1



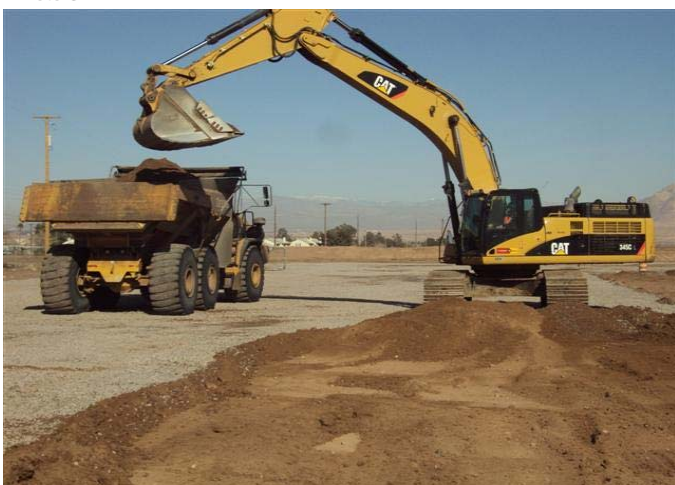
Eastside: Debris pile.

Photo 2



Eastside: Scrape.

Photo 3



Eastside: Scrape.

Photo 4



Eastside: Debris pile.