

QUARTERLY PROGRESS REPORT

AS REQUIRED BY

**SETTLEMENT AGREEMENT AND
ADMINISTRATIVE ORDER ON CONSENT
(AOC3)**

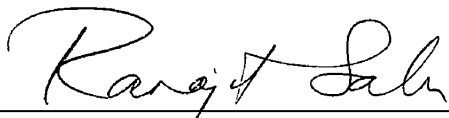
SECTION XIII, PARAGRAPHS 1 and 2.

SUBMITTED BY

BASIC REMEDIATION COMPANY

DATED APRIL 15, 2010

I hereby certify that I am responsible for the services described in this document and for the preparation of this document. The services described in this document have been provided in a manner consistent with the current standards of the profession and to the best of my knowledge comply with all applicable federal, state and local statutes, regulations and ordinances. I hereby certify that all laboratory analytical data was generated by a laboratory certified by the NDEP for each constituent and media presented herein.



4/15/10

Dr. Ranajit Sahu, C.E.M. (No. EM-1699, Exp. 10/07/2010)

Date

BRC Project Manager

1. Introduction

This Quarterly Progress Report is being submitted to the Nevada Division of Environmental Protection (NDEP) pursuant to the requirements of Paragraphs 1 and 2 of Section XIII of the AOC3 executed between the Parties and NDEP on February 15, 2006. The format of this report is based on the requirements stated in Paragraph 1 of Section XIII. This report covers activities between October 1 and December 31, 2009.

2. Actions Taken Towards Achieving Compliance

In addition to the various documents submitted to the NDEP discussed below, BRC and NDEP held numerous meetings and telephone calls in order to achieve progress on project activities. In-person or telephone meetings were held between the BRC Project Manager and the NDEP Project Manager (occasionally along with representatives from the City of Henderson as well as consultants representing the prospective property buyer) roughly every two weeks. Minutes of these meetings are maintained separately. Additional issue-specific meetings were also held either in person or via telephone between BRC and NDEP Project Managers. Minutes of these meetings are also maintained separately.

Remediation activities continued and were substantially concluded during this quarter. Mass hauling of Eastside wastes to the CAMU was completed during this period. However, additional targeted hauling, based on confirmatory sampling, will occur in the future before all remediation activities are completed. Daily progress reports were being submitted to the NDEP to document progress on these activities. Currently weekly progress reports are submitted. Briefly: (i) BRC and its contractors continued to haul Eastside soils from the TIMET ponds and adjacent areas, including scrape soils after initial confirmation sampling, for their placement into the CAMU into Phases II, IIIB, IV and V; (ii) cover placement was initiated on Phases IIIA, Phases II, I, IIIB, IV and side slopes of V; (iii) final cover activities continued on BMI Landfills North and South as well as Phases IIIA, I, II, IIIB, and IV; and (iv) associated air monitoring continued and was concluded; (iv) final grading of the storm water detention basins continued; and (v) construction of the storm water channels also continued. NDEP has been maintaining oversight of this effort directly and via its consultants.

Separately, BRC: (a) submitted the final version of the Integrated Background report for soils; (b) continued discussions with the NDEP regarding the appropriate background for the Western Hook and Open Space areas with regards to arsenic; (c) submitted a report relating to the Eastside 2009 groundwater effort; (d) obtained NDEP approval of the CAMU area groundwater reports and going-forward work plan; (e) submitted the revised risk assessment for the Mohawk sub-area; (f) conducted re-scrapes for the Western Hook, southern RIBs, Sunset North and Galleria sub-areas; (g) completed initial confirmation sampling for the Open Space, First Eight Rows, Upper Ponds and Spray Wheel sub areas and for much of the TIMET sub area; (h) obtained NDEP-approval for the TIMET sub area SAP; (i) submitted the initial and revised SAP for the Staging sub area; (j) completed a portion of the side-by-side sampling for soil gas and

vapor flux before weather interruptions; (k) submitted a report relating to the indoor radon sampling and associated groundwater sampling; and (l) submitted a report relating to the last of the air monitoring associated with mass remediation activities.

Results of previous confirmation sampling were received and analyzed and appropriate data validation activities also occurred.

BRC continued modeling efforts on solute groundwater modeling and began discussions on initial results with the NDEP on several of the key documents for the Eastside groundwater effort including the Upgradient and Isotope Reports.

BRC continues to participate in the coordinating “All Companies” conference calls. BRC and the companies await NDEP’s revision of the vapor intrusion report for the down gradient area.

3. Sampling Conducted

BRC collected various samples in support of the remediation effort including air monitoring samples for remediation support; iterative confirmation soil samples for various sub-areas; and groundwater samples from various wells at the Eastside.

4. Work Plans and Other Deliverables Submitted Including Modifications

Attachment A shows a list of all documents that were submitted to NDEP in this period. Attachment B shows a list of all NDEP documents received during this period.

5. Actions Scheduled for Next Quarter

Activities planned include: continuing confirmation sampling, associated scraping/hauling to the CAMU and reconfirmation sampling, as needed, for various Eastside sub areas; obtaining NDEP approval of various documents such as the Integrated Background dataset for soils; obtaining NFAs for Mohawk, Southern RIBs and possibly the Sunset sub-areas; completion of data validation for various data sets; obtaining NDEP approval of the Phase IIA air monitoring report; initiation of the next phase of CAMU area groundwater monitoring; obtaining approval of the final report on the Eastside 2009 groundwater monitoring and the various groundwater reports including the Upgradient Report and the Isotope Report; completion of the side-by-side flux/soil gas report; approval of the radon study; approval of the Staging sub area SAPs followed by data collection; and initiation of the Eastside updated CSM.

The following Work Plans and Other Deliverables are planned to be submitted to the NDEP in the next period:

(i) Revised Project Schedule (updated as needed). The current construction schedule is attached to this report. A regular overall project schedule is also attached.

(ii) Various Data Validation Summary Reports, as needed.

(iii) Final NFA-support risk assessment reports for various sub-areas.

(iv) Updated Eastside CSM

(v) Various targeted scrape plans for the different sub-areas, as needed.

Additional documents may also be submitted depending on project progress.

6. Completions, Delays and Mitigations

The remediation effort is generally on schedule.

7. Planned Modifications to Remedial Actions

Not applicable at this time. BRC has concluded that it cannot accept certain BMI plant wastes into the CAMU based on insurance coverage issues.

8. Community Relations Plan Actions Taken

Project documents continue to be posted to the project website. The factsheet for 2010 was prepared and finalized.

9. Community Relations Plan Actions for Next Quarter

The project website is expected to be updated periodically, including a reorganization of how the various documents are organized, to facilitate ease of retrieval. The 2010 Factsheet will be mailed out. A RAC meeting is scheduled for sometime in June 2010 and it will be held.

| Attachment A - DOCUMENTS SUBMITTED TO NDEP | | | |
|--|----------|-----------|---|
| TO | FROM | DATE | SUBJECT |
| Brian Rakvica | Ron Sahu | 1/7/2010 | CAMU Excess Air Monitoring Work Plan Rev 1 |
| Brian Rakvica | Ron Sahu | 1/11/2010 | CAMU 4th Quarter Groundwater October-November 2009 Dataset 55d Rev0 |
| Brian Rakvica | Ron Sahu | 1/11/2010 | Background Soil Compilation Report Revision 0 |
| Brian Rakvica | Ron Sahu | 1/13/2010 | Eastside Groundwater Monitoring July-Aug 2009 Dataset 58 |
| Brian Rakvica | Ron Sahu | 1/15/2010 | BRC Quarterly Progress Report |
| Brian Rakvica | Ron Sahu | 1/19/2010 | Southern RIBs Sub-Area Dataset 53 Rev 0 |
| Brian Rakvica | Ron Sahu | 1/21/2010 | CAMU 4th Quarter Groundwater October - November 2009 Dataset 55d Rev1 |
| Brian Rakvica | Ron Sahu | 1/22/2010 | CAMU Excess Air Monitoring Work Plan Rev 2 |
| Brian Rakvica | Ron Sahu | 2/2/2010 | BRC Recreational RBSLs Tech Memo Rev2 |
| Brian Rakvica | Ron Sahu | 2/3/2010 | Southern RIBs Sub-Area 2nd Round Confirmation Soil Investigation - December 2009 Dataset 53a Rev0 |
| Brian Rakvica | Ron Sahu | 2/8/2010 | Arsenic Occurrence Western Hook Sub-Area |
| Brian Rakvica | Ron Sahu | 2/11/2010 | BRC Upgradient Wells |
| Brian Rakvica | Ron Sahu | 2/11/2010 | Southern RIBs Sub-Area 2nd Round Confirmation Soil Investigation - December 2009 Dataset 53a Rev1 |
| Brian Rakvica | Ron Sahu | 2/12/2010 | 2009 Annual Groundwater Monitoring CAMU Baseline Rev1 |
| Brian Rakvica | Ron Sahu | 2/15/2010 | Sunset North Soils Investigation Dataset 59 Rev 0 |

| | | | |
|-----------------|----------|-----------|---|
| Brian Rakvica | Ron Sahu | 2/25/2010 | 2009 Groundwater Monitoring Eastside |
| Brian Rakvica | ERM | 2/26/2010 | Sampling and Analysis Plan for the Staging Sub-Area and Parcel 9 South; Revision 0 |
| Brian Rakvica | ERM | 3/5/2010 | Technical Memorandum – Development of Recreational Risk-Based Screening Levels (RBSLs); Revision 3 |
| Brian Rakvica | Ron Sahu | 3/8/2010 | Southern RIBs Sub-Area Dataset 53-Rev1 |
| Brian Rakvica | Ron Sahu | 3/9/2010 | Ph_II & IIA Perimeter Air Monitoring |
| Brian Rakvica | ERM | 3/10/2010 | Human Health Risk Assessment and Closure Report for the Mohawk Sub-Area; Redline/Strikeout Revisions |
| Brian Rakvica | ERM | 3/11/2010 | Data Validation Summary Report for the Sunset North Commercial Sub-Area Soil Investigations (Dataset 59); Revision 1 |
| Brian Rakvica | ERM | 3/12/2010 | BRC Closure Plan; Section 9 (Risk Assessment Methodology – Human Health) |
| Brian Rakvica | ERM | 3/16/2010 | Data Validation Summary Report for the Galleria North Sub-Area Soil Investigations (Dataset 59); Revision 0 |
| Brian Rakvica | Ron Sahu | 3/25/2010 | Technical Memorandum – Correlation of Radon Activities in Indoor Air and Shallow Zone Groundwater; Revision 0 |
| Brian Rakvica | Ron Sahu | 3/25/2010 | Tronox Parcels A-B VI Tech Memo_Rev1 |
| Brian Rakvica | Ron Sahu | 3/26/2010 | 2009 Annual Groundwater Monitoring-CAMU Baseline Rev1 |
| Shannon Harbour | ERM | 3/30/2010 | Technical Memorandum – Screening-Level Indoor Air Health Risk Assessment for the 2008 Tronox Parcels A/B Soil Gas Investigation; Revision 1 |
| Brian Rakvica | ERM | 3/31/2010 | Data Validation Summary Report for the Western Hook-Development Sub-Area Soil Investigations (Dataset 54); Revision 0 |

| Attachment B - CORRESPONDENCE FROM NDEP | | | |
|---|---------------|-----------|--|
| TO | FROM | DATE | SUBJECT |
| Mark Paris | Brian Rakvica | 1/4/2010 | NDEP's Response to: Response to Comments, CAMU Groundwater Monitoring Report, 3rd Quarter 2009 dated December 29, 2009 |
| Mark Paris | Brian Rakvica | 1/5/2010 | NDEP's Response to: BMI Common Areas Eastside Dry Ponds Remediation Phase IIIB Air Monitoring Summary Report, Revision 1, dated December 30, 2009 |
| Mark Paris | Brian Rakvica | 1/12/2010 | NDEP's Response to: Basic Remediation Company, Standard Operating Procedures, SOP-37, Active Soil Gas Investigation dated January 12, 2010 |
| Mark Paris | Brian Rakvica | 1/14/2010 | NDEP's Response to: BMI Complex CAMU/Plant Site Air Quality Monitoring Work Plan for CAMU Excess Capacity Filling, Revision 1 dated January 7, 2010 |
| Mark Paris | Brian Rakvica | 1/16/2010 | NDEP's Response to: Data Validation Summary Report; 2009 Eastside Groundwater Monitoring Event; July-August 2009 (Dataset 58); dated January 2010 (received January 14, 2010) |
| Mark Paris | Brian Rakvica | 1/16/2010 | BMI Plant Sites and Common Areas Projects - Soil to Groundwater Leaching Guidance |
| Mark Paris | Brian Rakvica | 1/17/2010 | NDEP's Response to: Technical Memorandum - Development of Recreational Risk-based Screening Levels (RBSLs) dated December 29, 2009 |
| Mark Paris | Brian Rakvica | 1/17/2010 | NDEP's Response to: Data Validation Summary Report, CAMU Fourth Quarter Groundwater Monitoring Event October-November 2009 (Dataset 55d); dated January 2010 (received January 12, 2010) |
| Mark Paris | Brian Rakvica | 1/22/2010 | BMI Plant Sites and Common Areas Projects - Community Involvement - Fact Sheet Update |
| Mark Paris | Brian Rakvica | 1/27/2010 | NDEP's Response to: Closure Plan Section 9 dated December 2009 (received December 11, 2009) |
| Mark Paris | Brian Rakvica | 1/29/2010 | NDEP's Response to: Sampling and Analysis Plan for the TIMET Ponds Sub-Area dated December 2009 (received December 24, 2009) |
| Mark Paris | Brian Rakvica | 1/30/2010 | NDEP's Response to: Data Validation Summary Report CAMU Fourth Quarter GW Monitoring Event October - November 2009 (Dataset 55d) BRC CAMU Area dated January 2010 (received January 21, 2010) |
| Mark Paris | Brian Rakvica | 2/4/2010 | NDEP's Response to: Data Validation Summary Report, Southern RIBs Sub-Area Soil Investigations October-November 2008; February 2009; September 2009 (Dataset 53); dated January 2010 (received January 20, 2010) |
| Mark Paris | Brian Rakvica | 2/9/2010 | NDEP's Response to: Data Validation Summary Report, Southern RIBs Sub-Area 2nd Round Confirmation Soil Investigation - December 2009 (Dataset 53a) dated February 2010 (received February 3, 2010) |
| Mark Paris | Brian Rakvica | 2/11/2010 | NDEP's Response to: Evaluation of Hydraulic Zone Connectivity Through Tritium and Stable Isotope Sampling and Analysis dated December 29, 2009 |
| Mark Paris | Brian Rakvica | 2/16/2010 | NDEP's Response to: Data Validation Summary Report, Southern RIBs Sub-Area 2nd Round Confirmation Soil Investigation - December 2009 (Dataset 53a) dated February 2010 (received February 11, 2010) |

| | | | |
|---------------|---------------|-----------|---|
| Mark Paris | Brian Rakvica | 2/16/2010 | NDEP's Response to: Background Soil Compilation Report dated January 2010 (received January 12, 2010) |
| Mark Paris | Brian Rakvica | 2/18/2010 | NDEP's Response to: Technical Memorandum - Development of Recreational Risk-based Screening Levels (RBSLs) dated February 2, 2010 |
| Mark Paris | Brian Rakvica | 2/20/2010 | NDEP's Response to: Revised Upgradient Wells Report dated February 11, 2010 |
| Mark Paris | Brian Rakvica | 2/23/2010 | NDEP's Response to: 2009 Annual GW Monitoring Report - CAMU Baseline dated February 2010 (received February 16, 2010) |
| Mark Paris | Brian Rakvica | 2/24/2010 | BMI Plant Sites and Common Areas Projects - Soil Physical and Chemical Property Measurement and Calculation Guidance |
| Mark Paris | Brian Rakvica | 2/26/2010 | NDEP's Response to: Data Validation Summary Report Sunset North Commercial Sub-Area Soil Investigations January - February 2009; July 2009 (Dataset 59); dated February 2010 (received February 16, 2010) |
| Brian Rakvica | Ron Sahu | 2/28/2010 | BMI Plant Sites and Common Areas Projects, Water Level Electronic Data Deliverable (EDD) Format |
| Brian Rakvica | Ron Sahu | 2/28/2010 | BMI Plant Sites and Common Areas Projects, NDEP-Required Electronic Data Deliverables (EDD) Format |
| Brian Rakvica | Ron Sahu | 3/4/2010 | NDEP's Response to: Evaluation of Arsenic Occurrence in the Western Hook Development Subarea dated Feb. 8, 2010 |
| Brian Rakvica | Ron Sahu | 3/10/2010 | NDEP's Response to: DVSR, Southern RIBs Sub-Area Soil Investigations October-November 2008; February 2009; September 2009 (Dataset 53) dated March 2010 (received March 9, 2010) |
| Brian Rakvica | Ron Sahu | 3/11/2010 | BMI Plant Sites and Common Areas Projects, Soil Physical and Chemical Property Measurement and Calculation Guidance |
| Brian Rakvica | Ron Sahu | 3/15/2010 | NDEP's Response to: BMI Complex Phase II and IIA Perimeter Air Monitoring Summary Report; dated March 9, 2010 |
| Brian Rakvica | Ron Sahu | 3/15/2010 | NDEP's Response to: ESR DCN-037 dated March 15, 2010 |
| Brian Rakvica | Ron Sahu | 3/16/2010 | NDEP's Response to: Technical Memorandum - Development of Recreational Risk-Based Screening Levels (RBSLs); dated March 5, 2010 |
| Brian Rakvica | Ron Sahu | 3/16/2010 | NDEP's Response to: Sampling and Analysis Plan for the Staging Sub-Area and Parcel 9 South dated February 2010 (received March 1, 2010) |
| Brian Rakvica | Ron Sahu | 3/17/2010 | NDEP's Response to: DVSR, Sunset North Commercial Sub-Area Soil Investigations, January-February 2009; July 2009 (Dataset 59); dated March 2010 (received March 15, 2010) |
| Brian Rakvica | Ron Sahu | 3/25/2010 | NDEP's Response to: 2009 Groundwater Monitoring Report dated February 25, 2010 |

| | | | |
|---------------|----------|-----------|--|
| Brian Rakvica | Ron Sahu | 3/25/2010 | NDEP's Response to: ESR-DCN-038 dated March 23, 2010 |
| Brian Rakvica | Ron Sahu | 3/30/2010 | NDEP's Response to: 2009 Annual Groundwater Monitoring Report - CAMU Baseline dated March 2010 (received March 26, 2010) |

BRC ENVIRONMENTAL CLEANUP

| ID | Task Name | Duration | Start | Finish | Predecessors | Qtr 1, 200 |
|----|---|-----------|--------------|--------------|--------------|------------|
| | | | | | | Jan |
| | | | | | | Feb |
| 1 | BRC SITE CLEANUP | 9026 days | Wed 2/15/06 | Fri 11/1/30 | | |
| 2 | | | | | | |
| 3 | | | | | | |
| 4 | | | | | | |
| 5 | SUPPORTING DOCUMENTS AND ACTIVITIES | 1796 days | Wed 2/15/06 | Sat 1/15/11 | | |
| 6 | | | | | | |
| 7 | AOC III | 1796 days | Wed 2/15/06 | Sat 1/15/11 | | |
| 8 | FINAL | 1 day | Wed 2/15/06 | Wed 2/15/06 | | |
| 9 | New Appendix (Previous NFAs) Submitted to NDEP. NDEP Review Ongoing | 1 day | Thu 10/19/06 | Thu 10/19/06 | | |
| 10 | Insert/Replace Revised Project Flow Diagram. BMI Companies Review Ongoing | 1 day | Wed 6/30/10 | Wed 6/30/10 | | |
| 11 | Initial Required Actions | 1157 days | Thu 4/13/06 | Fri 6/12/09 | | |
| 12 | Notice to Successors in Title - Under NDEP Review | 1 day | Thu 4/13/06 | Thu 4/13/06 | | |
| 13 | Submitted Revised Key Personnel Notice | 1 day | Fri 6/12/09 | Fri 6/12/09 | | |
| 14 | NDEP Approval | 1 day | Fri 6/12/09 | Fri 6/12/09 | | |
| 15 | Institutional Control Instrument - Under NDEP Review | 1 day | Thu 4/13/06 | Thu 4/13/06 | | |
| 16 | Revised QAPP Submitted to NDEP - FINAL | 1 day | Thu 4/16/09 | Thu 4/16/09 | | |
| 17 | Advance Payment - FINAL | 1 day | Thu 4/13/06 | Thu 4/13/06 | | |
| 18 | Certificates of Insurance | 1 day | Sun 12/31/06 | Sun 12/31/06 | | |
| 19 | Ongoing Required Actions | 1097 days | Tue 1/15/08 | Sat 1/15/11 | | |
| 20 | Annual Certificates of Insurance - FINAL | 1 day | Mon 2/15/10 | Mon 2/15/10 | | |
| 21 | Annual Certification - FINAL | 1 day | Sun 1/31/10 | Sun 1/31/10 | | |
| 22 | Quarterly Progress Report Q4 2007 - FINAL | 1 day | Tue 1/15/08 | Tue 1/15/08 | | |
| 23 | Quarterly Progress Report Q1 2008 - FINAL | 1 day | Tue 4/15/08 | Tue 4/15/08 | | |
| 24 | Quarterly Progress Report Q2 2008 - FINAL | 1 day | Tue 7/15/08 | Tue 7/15/08 | | |
| 25 | Quarterly Progress Report Q3 2008 - FINAL | 1 day | Wed 10/15/08 | Wed 10/15/08 | | |
| 26 | Quarterly Progress Report Q4 2008 - FINAL | 1 day | Thu 1/15/09 | Thu 1/15/09 | | |
| 27 | Quarterly Progress Report Q1 2009 - FINAL | 1 day | Wed 4/15/09 | Wed 4/15/09 | | |
| 28 | Quarterly Progress Report Q2 2009 - FINAL | 1 day | Wed 7/15/09 | Wed 7/15/09 | | |
| 29 | Quarterly Progress Report Q3 2009 - FINAL | 1 day | Thu 10/15/09 | Thu 10/15/09 | | |
| 30 | Quarterly Progress Report Q4 2009 - FINAL | 1 day | Fri 1/15/10 | Fri 1/15/10 | | |
| 31 | Quarterly Progress Report Q1 2010 | 1 day | Thu 4/15/10 | Thu 4/15/10 | | |
| 32 | Quarterly Progress Report Q2 2010 | 1 day | Thu 7/15/10 | Thu 7/15/10 | | |
| 33 | Quarterly Progress Report Q3 2010 | 1 day | Fri 10/15/10 | Fri 10/15/10 | | |
| 34 | Quarterly Progress Report Q4 2010 | 1 day | Sat 1/15/11 | Sat 1/15/11 | | |
| 35 | Annual Summary of Payments - FINAL | 1 day | Thu 4/30/09 | Thu 4/30/09 | | |
| 36 | Annual Summary of Payments | 1 day | Fri 4/30/10 | Fri 4/30/10 | | |
| 37 | Community Involvement Plan (CIP) | 1754 days | Tue 3/14/06 | Fri 12/31/10 | | |
| 38 | FINAL | 1 day | Fri 2/8/08 | Fri 2/8/08 | | |
| | Revised CIP To NDEP | 1 day | Sat 10/31/09 | Sat 10/31/09 | | |

BRC ENVIRONMENTAL CLEANUP

| ID | Task Name | Duration | Start | Finish | Predecessors | Qtr 1, 200 | |
|----|---|-----------|--------------|--------------|--------------|------------|-----|
| | | | | | | Jan | Feb |
| 39 | NDEP Approval | 30 days | Sun 11/1/09 | Mon 11/30/09 | 38 | | |
| 40 | Implementation Activities | 1754 days | Tue 3/14/06 | Fri 12/31/10 | | | |
| 41 | Project Factsheet 2006 - FINAL | 1 day | Tue 3/14/06 | Tue 3/14/06 | | | |
| 42 | Project Factsheet 2006 Distribution - FINAL | 1 day | Mon 5/15/06 | Mon 5/15/06 | | | |
| 43 | Project Factsheet 2007 - FINAL | 1 day | Tue 5/15/07 | Tue 5/15/07 | | | |
| 44 | Project Factsheet 2008 - FINAL | 1 day | Mon 6/30/08 | Mon 6/30/08 | | | |
| 45 | Project Factsheet 2009 - FINAL | 1 day | Fri 6/5/09 | Fri 6/5/09 | | | |
| 46 | Project Factsheet 2010 | 1 day | Fri 4/30/10 | Fri 4/30/10 | | | |
| 47 | Project Informational Kiosk Opened | 1100 days | Tue 11/28/06 | Tue 12/1/09 | | | |
| 48 | Opened | 1 day | Tue 11/28/06 | Tue 11/28/06 | | | |
| 49 | Panels Updated | 1 day | Fri 6/15/07 | Fri 6/15/07 | | | |
| 50 | Kiosk Decommissioned for Remediation Support | 1 day | Tue 12/1/09 | Tue 12/1/09 | 39 | | |
| 51 | Project Website | 641 days | Tue 3/31/09 | Fri 12/31/10 | | | |
| 52 | Documents Reorganization | 1 day | Tue 3/31/09 | Tue 3/31/09 | | | |
| 53 | Inclusion of Search Functionality for Documents - Ongoing | 1 day | Fri 12/31/10 | Fri 12/31/10 | | | |
| 54 | Project Document Repository Location Decision | 1 day | Mon 1/14/08 | Mon 1/14/08 | | | |
| 55 | | | | | | | |
| 56 | Site Related Chemicals (SRCs) | 1462 days | Mon 7/31/06 | Sat 7/31/10 | | | |
| 57 | FINAL (with completed MDL Studies) | 1 day | Thu 9/14/06 | Thu 9/14/06 | | | |
| 58 | BRC Request for Deletion of Analytes for Soil Sampling | 1 day | Wed 10/1/08 | Wed 10/1/08 | | | |
| 59 | NDEP Approval | 1 day | Thu 10/16/08 | Thu 10/16/08 | | | |
| 60 | Project Laboratories Complete Certification | 1462 days | Mon 7/31/06 | Sat 7/31/10 | | | |
| 61 | STL | 1 day | Mon 7/31/06 | Mon 7/31/06 | | | |
| 62 | Alpha | 1 day | Mon 7/31/06 | Mon 7/31/06 | | | |
| 63 | TestAmerica/DelMar | 1 day | Mon 7/31/06 | Mon 7/31/06 | | | |
| 64 | Southwest Analytical | 1 day | Mon 7/31/06 | Mon 7/31/06 | | | |
| 65 | EMS/EMSL Labs | 1 day | Mon 7/31/06 | Mon 7/31/06 | | | |
| 66 | GEL | 1 day | Wed 4/30/08 | Wed 4/30/08 | | | |
| 67 | Confirm that labs are maintaining certifications | 1 day | Sat 7/31/10 | Sat 7/31/10 | | | |
| 68 | | | | | | | |
| 69 | Technical Memorandum on Detection Limits | 6 days | Wed 3/25/09 | Mon 3/30/09 | | | |
| 70 | Submitted to NDEP | 1 day | Wed 3/25/09 | Wed 3/25/09 | | | |
| 71 | NDEP Approval Obtained | 1 day | Mon 3/30/09 | Mon 3/30/09 | | | |
| 72 | | | | | | | |
| 73 | FSP/SOPs | 1353 days | Mon 10/30/06 | Tue 7/13/10 | | | |
| 74 | FINAL | 1 day | Mon 10/30/06 | Mon 10/30/06 | | | |
| 75 | Current Final Set | 1 day | Fri 12/11/09 | Fri 12/11/09 | | | |
| 76 | SOP-37 (Revised) FINAL | 1 day | Mon 1/11/10 | Mon 1/11/10 | | | |

BRC ENVIRONMENTAL CLEANUP

| ID | Task Name | Duration | Start | Finish | Predecessors | Qtr 1, 200 |
|-----|---|-----------|--------------|--------------|---------------|------------|
| | | | | | | Jan Feb |
| 77 | SOP-16 In Revision | 1 day | Tue 7/13/10 | Tue 7/13/10 | 210FS+60 days | |
| 78 | PAMP | 780 days | Wed 2/27/08 | Fri 4/16/10 | | |
| 79 | Submitted Revised PAMP to NDEP | 1 day | Wed 2/27/08 | Wed 2/27/08 | | |
| 80 | NDEP Approval | 1 day | Thu 2/28/08 | Thu 2/28/08 | 79 | |
| 81 | Baseline - Phase I Monitoring Complete | 1 day | Sun 5/11/08 | Sun 5/11/08 | | |
| 82 | Baseline Data Discussion with NDEP | 1 day | Tue 7/1/08 | Tue 7/1/08 | | |
| 83 | Baseline Report Due to NDEP | 1 day | Mon 7/21/08 | Mon 7/21/08 | | |
| 84 | Phase II Sampling Letter to NDEP (Wet Materials - No Hauling) | 1 day | Thu 7/10/08 | Thu 7/10/08 | | |
| 85 | Phase II and Phase IIA Field Sampling Completed | 1 day | Sun 1/31/10 | Sun 1/31/10 | | |
| 86 | Revised Phase II and Phase IIA Report Submitted to NDEP | 1 day | Fri 4/16/10 | Fri 4/16/10 | | |
| 87 | Implement Phase III | 379 days | Wed 12/17/08 | Wed 12/30/09 | | |
| 88 | Phase IIIA - Haul Road/Truck Exhaust Report Approved | 1 day | Mon 11/16/09 | Mon 11/16/09 | | |
| 89 | Phase IIIB - Revised Dry Ponds Sampling Report Approved | 1 day | Wed 12/30/09 | Wed 12/30/09 | | |
| 90 | Phase IIIC - Slit Trench Area Sampling Report Approved | 1 day | Wed 9/30/09 | Wed 9/30/09 | | |
| 91 | Acid Gas Sampling | 2 days | Wed 12/17/08 | Thu 12/18/08 | | |
| 92 | Plants Baseline - Report approved by NDEP | 1 day | Wed 9/30/09 | Wed 9/30/09 | | |
| 93 | Excess CAMU Air Monitoring Plan (Revised) Defunct | 1 day | Mon 2/1/10 | Mon 2/1/10 | | |
| 94 | | | | | | |
| 95 | | | | | | |
| 96 | Background Investigations | 1036 days | Mon 7/2/07 | Sun 5/2/10 | | |
| 97 | Shallow Soils Background (Metals/Rads) | 1 day | Mon 7/2/07 | Mon 7/2/07 | | |
| 98 | FINAL | 1 day | Mon 7/2/07 | Mon 7/2/07 | | |
| 99 | Supplemental Shallow Soils Background | 1 day | Thu 9/17/09 | Thu 9/17/09 | | |
| 100 | FINAL | 1 day | Thu 9/17/09 | Thu 9/17/09 | | |
| 101 | Surface Soils Background (Other Compounds) | 1 day | Wed 10/10/07 | Wed 10/10/07 | | |
| 102 | OC Pesticides - Data Collected | 1 day | Wed 10/10/07 | Wed 10/10/07 | | |
| 103 | Deep Soil Horizons | 1 day | Fri 11/6/09 | Fri 11/6/09 | | |
| 104 | FINAL | 1 day | Fri 11/6/09 | Fri 11/6/09 | | |
| 105 | Integrated Soils Background Report | 31 days | Fri 4/2/10 | Sun 5/2/10 | | |
| 106 | Revised Report Submitted to the NDEP | 1 day | Fri 4/2/10 | Fri 4/2/10 | | |
| 107 | NDEP Approval | 30 days | Sat 4/3/10 | Sun 5/2/10 | 106 | |
| 108 | Qa/Other Horizons Groundwater Eastside | 1 day | Wed 4/28/10 | Wed 4/28/10 | | |
| 109 | Revised Upgradient Report To Be Submitted to NDEP | 1 day | Wed 4/28/10 | Wed 4/28/10 | 181 | |
| 110 | Qa/Other Horizons Groundwater CAMU Area | 1 day | Wed 12/31/08 | Wed 12/31/08 | | |
| 111 | To Be Determined | 1 day | Wed 12/31/08 | Wed 12/31/08 | | |
| 112 | | | | | | |
| 113 | RTCs For NDEP Comments | 275 days | Wed 2/15/06 | Thu 11/16/06 | | |
| 114 | Submit BRC RTCs for Specified Older NDEP Comments | 46 days | Wed 2/15/06 | Sat 4/1/06 | | |

BRC ENVIRONMENTAL CLEANUP

| ID | Task Name | Duration | Start | Finish | Predecessors | Qtr 1, 200 |
|-----|--|-----------|--------------|--------------|--------------|------------|
| | | | | | | Jan Feb |
| 115 | Submit BRC RTC for NDEP July 11, 2005 Comments | 46 days | Wed 2/15/06 | Sat 4/1/06 | | |
| 116 | Notice That No NDEP Comments Will Be Issued | 1 day | Thu 11/16/06 | Thu 11/16/06 | | |
| 117 | | | | | | |
| 118 | Eastside Groundwater Investigation | 1564 days | Fri 2/17/06 | Sun 5/30/10 | | |
| 119 | Workplan - FINAL | 1 day | Fri 2/17/06 | Fri 2/17/06 | | |
| 120 | First Quarter // Second Quarter // Third Quarter // Fourth Quarter | 1 day | Fri 11/9/07 | Fri 11/9/07 | | |
| 121 | Reports - FINAL | 1 day | Fri 11/9/07 | Fri 11/9/07 | | |
| 122 | Fifth Quarterly Event | 1 day | Thu 6/25/09 | Thu 6/25/09 | | |
| 123 | Report and RTC - FINAL | 1 day | Thu 6/25/09 | Thu 6/25/09 | | |
| 124 | 2009 Event | 336 days | Mon 6/29/09 | Sun 6/30/10 | | |
| 125 | Revised Workplan submitted to NDEP | 1 day | Mon 6/29/09 | Mon 6/29/09 | | |
| 126 | NDEP Conditional Approval | 1 day | Mon 6/29/09 | Mon 6/29/09 | | |
| 127 | Field Implementation Start | 1 day | Sat 7/25/09 | Sat 7/25/09 | | |
| 128 | Field Implementation Complete (including pump tests etc.) | 1 day | Fri 10/16/09 | Fri 10/16/09 | | |
| 129 | DVSR Submitted to NDEP | 1 day | Thu 1/14/10 | Thu 1/14/10 | | |
| 130 | NDEP Review/DVSR Approval | 1 day | Sat 1/16/10 | Sat 1/16/10 | | |
| 131 | Data Report Submitted to NDEP | 15 days | Sun 1/17/10 | Sun 1/31/10 | 130 | |
| 132 | Well MW-32 Replaced and Developed | 1 day | Fri 1/8/10 | Fri 1/8/10 | | |
| 133 | MW-32 Data Collection | 1 day | Mon 1/18/10 | Mon 1/18/10 | | |
| 134 | MCF-7 Resampling | 1 day | Mon 3/22/10 | Mon 3/22/10 | | |
| 135 | Report Submitted to the NDEP | 1 day | Thu 2/25/10 | Thu 2/25/10 | | |
| 136 | NDEP Comments Rec'd | 1 day | Thu 3/25/10 | Thu 3/25/10 | | |
| 137 | Revised Report to be Submitted to the NDEP | 1 day | Fri 4/30/10 | Fri 4/30/10 | | |
| 138 | Obtain Approval of Report | 30 days | Sat 5/1/10 | Sun 5/30/10 | 137 | |
| 139 | | | | | | |
| 140 | Screening Investigations for PCBs | 32 days | Mon 6/12/06 | Thu 7/13/06 | | |
| 141 | Submit Workplan | 1 day | Mon 6/12/06 | Mon 6/12/06 | | |
| 142 | NDEP Comments Received | 1 day | Tue 7/11/06 | Tue 7/11/06 | | |
| 143 | BRC Response/Defer Workplan | 1 day | Thu 7/13/06 | Thu 7/13/06 | | |
| 144 | | | | | | |
| 145 | Off-Site Dust Sampling | 529 days | Thu 11/30/06 | Sun 5/11/08 | | |
| 146 | Report Submitted to NDEP | 1 day | Thu 11/30/06 | Thu 11/30/06 | | |
| 147 | Submitted Revised Report Per Most Recent NDEP Comments | 1 day | Mon 4/30/07 | Mon 4/30/07 | | |
| 148 | NDEP Response Letter | 1 day | Thu 5/31/07 | Thu 5/31/07 | | |
| 149 | Obtained Bids for Data Collection | 1 day | Sat 9/1/07 | Sat 9/1/07 | | |
| 150 | Collect Baseline Data (See PAMP Above) | 1 day | Sun 5/11/08 | Sun 5/11/08 | | |
| 151 | | | | | | |
| 152 | Removal of Recent IDW | 31 days | Tue 1/15/08 | Thu 2/14/08 | | |

BRC ENVIRONMENTAL CLEANUP

| ID | Task Name | Duration | Start | Finish | Predecessors | Qtr 1, 200 | |
|-----|---|------------------|---------------------|---------------------|---------------|------------|-----|
| | | | | | | Jan | Feb |
| 153 | Complete NDEP Discussions Re. Profiling | 1 day | Tue 1/15/08 | Tue 1/15/08 | | | |
| 154 | Remove IPW | 30 days | Wed 1/15/08 | Thu 2/14/08 | 153 | | |
| 155 | | | | | | | |
| 156 | Radionuclide Secular Equilibrium Verification | 464 days | Thu 11/1/07 | Fri 2/6/09 | | | |
| 157 | Submitted Calculations to NDEP for Review | 1 day | Thu 11/1/07 | Thu 11/1/07 | | | |
| 158 | NDEP Guidance Issued | 1 day | Fri 2/6/09 | Fri 2/6/09 | | | |
| 159 | | | | | | | |
| 160 | Isotope Tracer Analysis Technical Memorandum | 308 days | Thu 6/18/09 | Wed 4/21/10 | | | |
| 161 | Revised Memo Submitted to NDEP | 1 day | Thu 6/18/09 | Thu 6/18/09 | | | |
| 162 | See Line 175 Below for Eastside Isotope Connectivity Report | 1 day | Wed 4/21/10 | Wed 4/21/10 | 180 | | |
| 163 | | | | | | | |
| 164 | EASTSIDE SOILS (IMPLEMENTATION OF SOILS ROD) | 9026 days | Wed 2/15/06 | Fri 11/1/30 | | | |
| 165 | | | | | | | |
| 166 | CLOSURE PLAN (Inc. Site-Wide DQOs) | 1 day | Mon 7/16/07 | Mon 7/16/07 | | | |
| 167 | FINAL | 1 day | Mon 7/16/07 | Mon 7/16/07 | | | |
| 168 | | | | | | | |
| 169 | STATISTICAL CLOSURE Report | 1 day | Fri 9/1/06 | Fri 9/1/06 | | | |
| 170 | FINAL | 1 day | Fri 9/1/06 | Fri 9/1/06 | | | |
| 171 | | | | | | | |
| 172 | EASTSIDE CSM REPORT | 1387 days | Wed 12/13/06 | Wed 9/29/10 | | | |
| 173 | Legacy Data Validation Reports Finalized | 1 day | Tue 2/27/07 | Tue 2/27/07 | 387FS-1 day | | |
| 174 | Begin Preparation of Draft CSM Report | 1 day | Wed 7/25/07 | Wed 7/25/07 | 188 | | |
| 175 | Submit Draft CSM Report to NDEP | 30 days | Thu 7/26/07 | Fri 8/24/07 | 174 | | |
| 176 | NDEP Review | 30 days | Sat 8/25/07 | Sun 9/23/07 | 175 | | |
| 177 | Submit Final CSM to NDEP | 15 days | Mon 9/24/07 | Mon 10/8/07 | 176 | | |
| 178 | OBTAIN Eastside CSM NDEP "Approval" (Living Doc) | 15 days | Tue 10/9/07 | Tue 10/23/07 | 177 | | |
| 179 | Submit Revised WH Arsenic Report to NDEP | 1 day | Fri 4/16/10 | Fri 4/16/10 | | | |
| 180 | Submit Revised Isotope and Hydraulic Connectivity Report to NDEP | 1 day | Tue 4/20/10 | Tue 4/20/10 | | | |
| 181 | Submit Revised Isotope and Hydraulic Connectivity Report to NDEP | 1 day | Wed 4/28/10 | Thu 5/27/10 | 179, 180, 181 | | |
| 182 | Finalize Reports Above (WH Arsenic/Isotope/Upgradient) | 30 days | Wed 4/28/10 | Thu 5/27/10 | 182, 138 | | |
| 183 | Prepare Updated Eastside CSM Report | 60 days | Mon 5/31/10 | Thu 7/29/10 | 183 | | |
| 184 | Updated Eastside CSM Submitted to NDEP | 1 day | Sat 7/31/10 | Sat 7/31/10 | 184 | | |
| 185 | NDEP Approval of Updated Eastside CSM | 60 days | Sun 8/1/10 | Wed 9/29/10 | | | |
| 186 | | | | | | | |
| 187 | Eastside - Northeast Area Shallow Groundwater | 151 days | Tue 7/24/07 | Fri 12/21/07 | | | |
| 188 | Complete field implementation / well installation | 1 day | Tue 7/24/07 | Tue 7/24/07 | | | |
| 189 | Complete Soil Boring Data Analysis and Submit Data Report to NDEP | 1 day | Fri 12/21/07 | Fri 12/21/07 | | | |
| 190 | | | | | | | |

BRC ENVIRONMENTAL CLEANUP

| ID | Task Name | Duration | Start | Finish | Predecessors | Qtr 1, 200 | |
|-----|---|------------------|---------------------|---------------------|--------------|------------|-----|
| | | | | | | Jan | Feb |
| 191 | Eastside Aquifer Testing/Slug Testing and Groundwater Modeling | 1242 days | Wed 12/13/06 | Fri 5/7/10 | | | |
| 192 | Modeling Workplan - FINAL | 1 day | Wed 12/13/06 | Wed 12/13/06 | | | |
| 193 | Aquifer Testing Report - FINAL | 1 day | Mon 12/3/07 | Mon 12/3/07 | | | |
| 194 | Slug Testing Report - FINAL | 1 day | Wed 12/12/07 | Wed 12/12/07 | | | |
| 195 | Tech Memo - CONDITIONAL FINAL | 1 day | Tue 6/17/08 | Tue 6/17/08 | | | |
| 196 | GW Model Report Calibration Report - FINAL (with RTC requested) | 1 day | Tue 6/16/09 | Tue 6/16/09 | | | |
| 197 | RTC to NDEP | 1 day | Fri 7/31/09 | Fri 7/31/09 | | | |
| 198 | Solute Transport Modeling workplan approved by NDEP | 1 day | Tue 10/6/09 | Tue 10/6/09 | | | |
| 199 | Solute Transport Modeling and Discussions with NDEP | 90 days | Mon 1/4/10 | Sat 4/3/10 | | | |
| 200 | GW Report to NDEP | 1 day | Fri 5/7/10 | Fri 5/7/10 | | | |
| 201 | EASTSIDE CLEANUP ACTIVITIES | 961 days | Thu 5/4/08 | Fri 12/31/10 | | | |
| 202 | | | | | | | |
| 203 | Western Hook Arsenic Report | 1 day | Mon 4/19/10 | Mon 4/19/10 | | | |
| 204 | Revised Draft to NDEP | 1 day | Mon 4/19/10 | Mon 4/19/10 | | | |
| 205 | Flux and Solt Gas Comparison | 146 days | Sat 12/19/09 | Thu 6/13/10 | | | |
| 206 | NDEP Approval of Workplan | 1 day | Sat 12/19/09 | Sat 12/19/09 | | | |
| 207 | Implement Plan (First Two Locations) | 7 days | Wed 1/20/10 | Tue 1/26/10 | | | |
| 208 | Laboratory Analysis and Draft Report to NDEP | 100 days | Wed 1/27/10 | Thu 5/6/10 | 208 | | |
| 209 | Finalize Approach Going Forward | 7 days | Fri 5/7/10 | Thu 5/13/10 | 209 | | |
| 210 | Indoor Radon and Groundwater Radon Sampling | 95 days | Mon 12/21/09 | Thu 3/25/10 | | | |
| 211 | NDEP Approval of Workplan | 1 day | Mon 12/21/09 | Mon 12/21/09 | | | |
| 212 | Implement Plan | 25 days | Tue 12/22/09 | Fri 1/15/10 | 212 | | |
| 213 | Report Submitted to NDEP | 1 day | Thu 3/25/10 | Thu 3/25/10 | | | |
| 214 | | | | | | | |
| 215 | [1] 4A AREA | 1 day | Thu 5/15/08 | Thu 5/15/08 | | | |
| 216 | NFA Obtained | 1 day | Thu 5/15/08 | Thu 5/15/08 | | | |
| 217 | | | | | | | |
| 218 | [1] 4B AREA | 1 day | Thu 11/12/09 | Thu 11/12/09 | | | |
| 219 | NFA Obtained | 1 day | Thu 11/12/09 | Thu 11/12/09 | | | |
| 220 | | | | | | | |
| 221 | [1A] COH UTILITY CORRIDOR SUB-AREA | 240 days | Thu 1/8/09 | Fri 9/4/09 | | | |
| 222 | Partial NFA Obtained | 1 day | Thu 1/8/09 | Thu 1/8/09 | | | |
| 223 | Final NFA Obtained | 1 day | Fri 9/4/09 | Fri 9/4/09 | | | |
| 224 | | | | | | | |
| 225 | [2] MOHAWK SUB-AREA | 61 days | Tue 3/9/10 | Sat 5/8/10 | | | |
| 226 | Revised HRA Submitted to NDEP | 1 day | Tue 3/9/10 | Tue 3/9/10 | | | |
| 227 | NDEP Review and NFAD Approval | 60 days | Wed 3/10/10 | Sat 5/8/10 | 227 | | |
| 228 | | | | | | | |

BRC ENVIRONMENTAL CLEANUP

| ID | Task Name | Duration | Start | Finish | Predecessors | Qtr 1, 200 | |
|-----|---|----------|--------------|--------------|--------------|------------|-----|
| | | | | | | Jan | Feb |
| 229 | WARM SPRINGS ROAD | 16 days | Thu 4/15/10 | Fri 4/30/10 | | | |
| 230 | Clean Closure Technical Memo to NDEP | 1 day | Thu 4/15/10 | Thu 4/15/10 | | | |
| 231 | NDEP Review and NFAD Approval | 15 days | Fri 4/16/10 | Fri 4/30/10 | 231 | | |
| 233 | [3] W HOOK, OPEN SPACE, GALLERIA, SN, UPPER PONDS, SPRAY WHEEL | 257 days | Mon 4/19/10 | Fri 12/31/10 | | | |
| 234 | Rescrape Plan Submitted to NDEP | 1 day | Mon 4/19/10 | Mon 4/19/10 | | | |
| 235 | Rescrape Plan discussions and approval | 10 days | Tue 4/20/10 | Thu 4/29/10 | 235 | | |
| 236 | Implement Rescrape Plan and Conduct Confirmatory Sampling | 30 days | Fri 4/30/10 | Sat 5/29/10 | 236 | | |
| 237 | Lab Data Analysis | 30 days | Sun 5/30/10 | Mon 6/28/10 | 237 | | |
| 238 | Data Evaluation and Supplemental DVSRs | 30 days | Tue 6/29/10 | Wed 7/28/10 | 238 | | |
| 239 | Prepare NFA HRA's and Discuss Priorities with NDEP | 30 days | Thu 7/29/10 | Fri 8/27/10 | 239 | | |
| 240 | HRA Submittals and NDEP Review | 60 days | Sat 8/28/10 | Tue 10/26/10 | 240 | | |
| 242 | Obtain NFADs By | 1 day | Fri 12/31/10 | Fri 12/31/10 | | | |
| 243 | [4] Southern RIBS SUB-AREA | 701 days | Thu 9/11/08 | Thu 8/12/10 | | | |
| 244 | NDEP Approval of SAP | 1 day | Thu 9/11/08 | Thu 9/11/08 | | | |
| 245 | Field Sampling - Last Round of Confirmation Sampling Completed | 1 day | Wed 3/31/10 | Wed 3/31/10 | | | |
| 246 | Laboratory Data Analysis | 21 days | Thu 4/1/10 | Wed 4/21/10 | 246 | | |
| 247 | Data Validation Complete | 21 days | Thu 4/22/10 | Wed 5/12/10 | 247 | | |
| 248 | Data Useability and Risk Assessment Draft Complete | 15 days | Thu 5/13/10 | Thu 5/27/10 | 248 | | |
| 249 | Prepare Draft Closure Report | 15 days | Fri 5/28/10 | Fri 6/11/10 | 249 | | |
| 250 | SUBMIT Draft Closure Report to NDEP | 1 day | Sat 6/12/10 | Sat 6/12/10 | 250 | | |
| 251 | NDEP Review | 15 days | Sun 6/13/10 | Sun 6/27/10 | 251 | | |
| 252 | INCORPORATE NDEP Comments | 15 days | Mon 6/28/10 | Mon 7/12/10 | 252 | | |
| 253 | SUBMIT FINAL to NDEP | 1 day | Tue 7/13/10 | Tue 7/13/10 | 253 | | |
| 254 | OBTAIN NFAD | 30 days | Wed 7/14/10 | Thu 8/12/10 | 254 | | |
| 255 | | | | | | | |
| 256 | [3] TIMET SUB-AREA | 144 days | Sat 4/10/10 | Tue 8/31/10 | | | |
| 257 | Field Sampling Completed | 1 day | Sat 4/10/10 | Sat 4/10/10 | | | |
| 258 | Laboratory Data Analysis | 30 days | Sun 4/11/10 | Mon 5/10/10 | 258 | | |
| 259 | Data Validation Complete | 21 days | Tue 5/11/10 | Mon 5/31/10 | 259 | | |
| 260 | Data Useability and Risk Assessment Draft Complete | 15 days | Tue 6/1/10 | Tue 6/15/10 | 260 | | |
| 261 | Prepare Draft Closure Report | 15 days | Wed 6/16/10 | Wed 6/30/10 | 261 | | |
| 262 | SUBMIT Draft Closure Report to NDEP | 1 day | Thu 7/1/10 | Thu 7/1/10 | 262 | | |
| 263 | NDEP Review | 15 days | Fri 7/2/10 | Fri 7/16/10 | 263 | | |
| 264 | INCORPORATE NDEP Comments | 15 days | Sat 7/17/10 | Sat 7/31/10 | 264 | | |
| 265 | SUBMIT FINAL to NDEP | 1 day | Sun 8/1/10 | Sun 8/1/10 | 265 | | |
| 266 | | | | | | | |

BRC ENVIRONMENTAL CLEANUP

| ID | Task Name | Duration | Start | Finish | Predecessors | Qtr 1, 200 | |
|-----|--|-----------|--------------|--------------|--------------|------------|-----|
| | | | | | | Jan | Feb |
| 267 | OBTAIN NFAD | 30 days | Mon 8/2/10 | Tue 8/31/10 | 266 | | |
| 268 | | | | | | | |
| 269 | [3] STAGING SUB-AREA | 204 days | Wed 4/7/10 | Wed 10/27/10 | | | |
| 270 | Revised SAP Submitted to NDEP | 1 day | Wed 4/7/10 | Wed 4/7/10 | | | |
| 271 | SAP Approved by NDEP | 30 days | Thu 4/8/10 | Fri 5/7/10 | 270 | | |
| 272 | Field Sampling | 30 days | Sat 5/8/10 | Sun 6/6/10 | 271 | | |
| 273 | Laboratory Data Analysis | 30 days | Mon 6/7/10 | Tue 7/6/10 | 272 | | |
| 274 | Data Validation Complete | 21 days | Wed 7/7/10 | Tue 7/27/10 | 273 | | |
| 275 | Data Useability and Risk Assessment Draft Complete | 15 days | Wed 7/28/10 | Wed 8/11/10 | 274 | | |
| 276 | Prepare Draft Closure Report | 15 days | Thu 8/12/10 | Thu 8/26/10 | 275 | | |
| 277 | SUBMIT Draft Closure Report to NDEP | 1 day | Fri 8/27/10 | Fri 8/27/10 | 276 | | |
| 278 | NDEP Review | 15 days | Sat 8/28/10 | Sat 9/11/10 | 277 | | |
| 279 | INCORPORATE NDEP Comments | 15 days | Sun 9/12/10 | Sun 9/26/10 | 278 | | |
| 280 | SUBMIT FINAL to NDEP | 1 day | Mon 9/27/10 | Mon 9/27/10 | 279 | | |
| 281 | OBTAIN NFAD | 30 days | Tue 9/28/10 | Wed 10/27/10 | 280 | | |
| 282 | | | | | | | |
| 283 | [Asbestos Only] Remaining Areas Except Remediation Areas | 292 days | Mon 10/13/08 | Fri 7/31/09 | | | |
| 284 | NDEP Approval | 1 day | Mon 10/13/08 | Mon 10/13/08 | | | |
| 285 | Field Sampling Completed | 1 day | Mon 1/12/09 | Mon 1/12/09 | | | |
| 286 | Laboratory Analysis Completed | 1 day | Fri 7/31/09 | Fri 7/31/09 | | | |
| 287 | | | | | | | |
| 288 | CAMU AREA - CAP, RAP, BORROW AREA, SLIT TRENCHES | 8807 days | Fri 9/22/06 | Fri 11/1/30 | | | |
| 289 | CAP | 1 day | Mon 9/25/06 | Mon 9/25/06 | | | |
| 290 | FINAL | 1 day | Mon 9/25/06 | Mon 9/25/06 | | | |
| 291 | | | | | | | |
| 292 | RAP | 785 days | Mon 9/17/07 | Mon 11/9/09 | | | |
| 293 | FINAL (after NDEP Design Review) | 1 day | Wed 3/5/08 | Wed 3/5/08 | | | |
| 294 | NDEP Public Notice to Allow BMI Company Wastes into CAMU | 30 days | Sun 10/11/09 | Mon 11/9/09 | | | |
| 295 | | | | | | | |
| 296 | TRI Inapplicability Letter | 3 days | Tue 3/11/08 | Thu 3/13/08 | | | |
| 297 | Letter Submitted By BRC to NDEP | 1 day | Tue 3/11/08 | Tue 3/11/08 | | | |
| 298 | NDEP Approval | 1 day | Thu 3/13/08 | Thu 3/13/08 | | | |
| 299 | | | | | | | |
| 300 | Slit Trench RAS | 1 day | Mon 9/17/07 | Mon 9/17/07 | | | |
| 301 | FINAL - RAS and ROD Issued | 1 day | Mon 9/17/07 | Mon 9/17/07 | | | |
| 302 | | | | | | | |
| 303 | CAMU CSM | 1 day | Wed 8/8/07 | Wed 8/8/07 | | | |
| 304 | FINAL - (Living Doc) | 1 day | Wed 8/8/07 | Wed 8/8/07 | | | |

BRC ENVIRONMENTAL CLEANUP

| ID | Task Name | Duration | Start | Finish | Predecessors | Qtr 1, 200 | |
|-----|---|------------------|---------------------|---------------------|--------------|------------|-----|
| | | | | | | Jan | Feb |
| 305 | CAMU Construction | 7945 days | Sat 1/31/09 | Fri 11/1/30 | | | |
| 306 | Phase I (Interim Cover) | 1 day | Sat 1/31/09 | Sat 1/31/09 | | | |
| 307 | Phase II (Interim Cover) | 1 day | Sat 8/1/09 | Sat 8/1/09 | | | |
| 308 | Phase IIIA (Interim Cover) | 1 day | Wed 7/29/09 | Wed 7/29/09 | | | |
| 309 | Phase IIIB (Interim Cover) | 1 day | Sat 9/26/09 | Sat 9/26/09 | | | |
| 310 | Phase IV (Interim Cover) | 1 day | Tue 3/16/10 | Tue 3/16/10 | | | |
| 311 | Phase V (Interim Cover) | 1 day | Mon 4/12/10 | Mon 4/12/10 | | | |
| 312 | Completion of BMI North and South Landfills | 1 day | Tue 5/18/10 | Tue 5/18/10 | | | |
| 313 | Complete SWPPP (Channels and Detention Basins) | 1 day | Thu 9/30/10 | Thu 9/30/10 | | | |
| 314 | Placement of Scraping Wastes - All Sub-areas except TIMET and Staging | 40 days | Wed 5/5/10 | Sun 6/13/10 | | | |
| 315 | Placement of Scraping Wastes - TIMET and Staging sub areas | 15 days | Thu 8/12/10 | Thu 8/26/10 | 275 | | |
| 316 | CAMU Closure | 1 day | Fri 11/1/30 | Fri 11/1/30 | | | |
| 317 | | | | | | | |
| 318 | CAMU Area Groundwater Monitoring | 503 days | Wed 12/17/08 | Mon 5/3/10 | | | |
| 319 | NDEP Approval of Baseline Sampling Workplan | 1 day | Wed 12/17/08 | Wed 12/17/08 | | | |
| 320 | Q1 and Q2 Field Sampling | 1 day | Fri 10/2/09 | Fri 10/2/09 | | | |
| 321 | Report Approved by the NDEP | 1 day | Fri 10/2/09 | Fri 10/2/09 | | | |
| 322 | Q3 Field Sampling | 35 days | Wed 11/25/09 | Tue 12/29/09 | | | |
| 323 | Report Review Completed By NDEP | 1 day | Wed 11/25/09 | Wed 11/25/09 | | | |
| 324 | Response to Comments Provided by BRC | 1 day | Tue 12/29/09 | Tue 12/29/09 | | | |
| 325 | Q4 Field Sampling | 1 day | Tue 3/30/10 | Tue 3/30/10 | | | |
| 326 | Report Approved by NDEP | 1 day | Tue 3/30/10 | Tue 3/30/10 | | | |
| 327 | Going Forward Work Plan Approved by NDEP | 1 day | Tue 3/30/10 | Tue 3/30/10 | | | |
| 328 | 2010 First Semi-Annual Sampling | 15 days | Mon 4/19/10 | Mon 5/3/10 | | | |
| 329 | | | | | | | |
| 330 | Safety Equipment For NDEP | 29 days | Fri 9/22/06 | Fri 10/20/06 | | | |
| 331 | Procurement Requested | 1 day | Fri 9/22/06 | Fri 9/22/06 | | | |
| 332 | Equipment Obtained and Received By NDEP | 1 day | Fri 10/20/06 | Fri 10/20/06 | | | |
| 333 | | | | | | | |
| 334 | OTHER POTENTIAL ACTIONS (BEYOND SOILS ROD) | 1241 days | Thu 8/9/07 | Fri 12/31/10 | | | |
| 335 | Eastside Groundwater RAS Development | 62 days | Thu 9/30/10 | Thu 12/30/10 | | | |
| 336 | Develop Draft RAS | 45 days | Thu 9/30/10 | Sat 11/13/10 | 185 | | |
| 337 | Submit to NDEP | 1 day | Sun 11/14/10 | Sun 11/14/10 | 338 | | |
| 338 | NDEP Review and Resubmittal | 45 days | Mon 11/15/10 | Wed 12/29/10 | 339 | | |
| 339 | Draft ROD Issued | 1 day | Thu 12/30/10 | Thu 12/30/10 | 340 | | |
| 340 | | | | | | | |
| 341 | | | | | | | |
| 342 | | | | | | | |

BRC ENVIRONMENTAL CLEANUP

| ID | Task Name | Duration | Start | Finish | Predecessors | Qtr 1, 200 | |
|-----|---|-----------|--------------|--------------|--------------|------------|-----|
| | | | | | | Jan | Feb |
| 343 | Investigations of Western Ditch Between CAMU and Lower Ponds To Be Determined | 1 day | Fri 12/31/10 | Fri 12/31/10 | | | |
| 344 | | 1 day | Fri 12/31/10 | Fri 12/31/10 | | | |
| 345 | Investigations of North Western Ditch Between CAMU and Lower Ponds To Be Determined | 1 day | Fri 12/31/10 | Fri 12/31/10 | | | |
| 346 | | 1 day | Fri 12/31/10 | Fri 12/31/10 | | | |
| 347 | Investigations of BMI Siphon To Be Determined | 1 day | Fri 12/31/10 | Fri 12/31/10 | | | |
| 348 | | 1 day | Fri 12/31/10 | Fri 12/31/10 | | | |
| 349 | Investigations of BMI Siphon To Be Determined | 1 day | Fri 12/31/10 | Fri 12/31/10 | | | |
| 350 | | 1 day | Fri 12/31/10 | Fri 12/31/10 | | | |
| 351 | Non-Intrusive Investigation of Trade Effluent Ponds in Common Areas Being Done As Part of CAMU Area Investigations | 1 day | Thu 8/9/07 | Thu 8/9/07 | | | |
| 352 | | 1 day | Thu 8/9/07 | Thu 8/9/07 | 304 | | |
| 353 | Non-Intrusive Investigation of Closed BMI Landfills Being Done As Part of CAMU Area Investigations | 1 day | Thu 8/9/07 | Thu 8/9/07 | | | |
| 354 | | 1 day | Thu 8/9/07 | Thu 8/9/07 | | | |
| 355 | Other Media RAS Development To Be Determined | 1 day | Fri 12/31/10 | Fri 12/31/10 | | | |
| 356 | | 1 day | Fri 12/31/10 | Fri 12/31/10 | | | |
| 357 | DATA VALIDATION SUMMARY REPORTS CAMU-Area Data-Sets | 1582 days | Wed 2/15/06 | Tue 6/15/10 | | | |
| 358 | | 87 days | Tue 6/13/06 | Thu 9/7/06 | | | |
| 359 | Set #3 Landfill Monitoring (GW) - FINAL | 22 days | Wed 6/14/06 | Wed 7/5/06 | | | |
| 360 | Set #10 Borrow Area Investigation - FINAL | 1 day | Tue 6/13/06 | Tue 6/13/06 | | | |
| 361 | Set #11 Slit Trench Investigation - FINAL | 1 day | Tue 6/13/06 | Tue 6/13/06 | | | |
| 362 | a) May 2000 field event - FINAL | 1 day | Tue 6/13/06 | Tue 6/13/06 | | | |
| 363 | b) July 2000 field event - FINAL | 23 days | Tue 6/13/06 | Wed 7/5/06 | | | |
| 364 | Set #13 CAMU Investigations - FINAL | 1 day | Tue 6/13/06 | Tue 6/13/06 | | | |
| 365 | a) April 2000 field event - FINAL | 1 day | Tue 6/13/06 | Tue 6/13/06 | | | |
| 366 | b) July 2000 field event - FINAL | 1 day | Tue 6/13/06 | Tue 6/13/06 | | | |
| 367 | c) Nov 2000 field event (WDE locs) - FINAL | 1 day | Tue 6/13/06 | Tue 6/13/06 | | | |
| 368 | d) March 2001 field event (follow on WDE) - FINAL | 1 day | Tue 6/13/06 | Tue 6/13/06 | | | |
| 369 | Set #15 Power Pole Excavation Investigation - FINAL | 1 day | Fri 9/1/06 | Fri 9/1/06 | | | |
| 370 | Set #26 Borrow Area Investigation - FINAL | 22 days | Tue 8/8/06 | Tue 8/29/06 | | | |
| 371 | a) Initial Investigation - FINAL | 1 day | Tue 8/8/06 | Tue 8/8/06 | | | |
| 372 | b) Supplemental Investigation - FINAL | 1 day | Tue 8/29/06 | Tue 8/29/06 | | | |
| 373 | Set #28 Slit Trench Soil Investigation - FINAL | 1 day | Wed 8/16/06 | Wed 8/16/06 | | | |
| 374 | Set #29 Slit Trench Soil Vapor Investigation - FINAL | 1 day | Wed 7/26/06 | Wed 7/26/06 | | | |
| 375 | Set #30 CAMU Hydro Investigation - FINAL | 1 day | Tue 8/29/06 | Tue 8/29/06 | | | |

BRC ENVIRONMENTAL CLEANUP

| ID | Task Name | Duration | Start | Finish | Predecessors | Qtr 1, 200 | |
|-----|--|----------|--------------|--------------|--------------|------------|-----|
| | | | | | | Jan | Feb |
| 385 | Set #36 2006 Borrow Area Investigation - FINAL | 1 day | Thu 9/7/06 | Thu 9/7/06 | | | |
| 386 | | | | | | | |
| 387 | Eastside Area Data-Sets | | | | | | |
| 388 | Set #1 Environmental Conditions Investigation | 378 days | Wed 2/15/06 | Tue 2/27/07 | | | |
| 389 | a) Upper & Lower Ponds and Ditches - FINAL | 1 day | Tue 9/12/06 | Tue 9/12/06 | | | |
| 390 | Set #4 Preliminary GW Investigation (DM wells) - FINAL | 1 day | Tue 12/5/06 | Tue 12/5/06 | | | |
| 391 | Set #6 1999 Ponds Supplemental Soil Investigations | 16 days | Tue 10/10/06 | Wed 10/25/06 | | | |
| 392 | a) Berm Samples - FINAL | 1 day | Wed 10/25/06 | Wed 10/25/06 | | | |
| 393 | b) At-Depth Samples (to 15 ft bgs) - FINAL | 1 day | Wed 10/25/06 | Wed 10/25/06 | | | |
| 394 | c) New SRC sampling - FINAL | 1 day | Tue 10/10/06 | Tue 10/10/06 | | | |
| 395 | d) Miscellaneous (At-Depth Samples, expanded rads & pesticides, etc) | 1 day | Tue 10/10/06 | Tue 10/10/06 | | | |
| 396 | Set #7 Upper & Lower Ponds IRM Sampling | 52 days | Wed 9/13/06 | Fri 11/3/06 | | | |
| 397 | a) Mohawk - FINAL | 1 day | Tue 10/17/06 | Tue 10/17/06 | | | |
| 398 | b) Sunset - FINAL | 1 day | Wed 9/13/06 | Wed 9/13/06 | | | |
| 399 | c) Sunset pit sampling for asbestos - FINAL | 1 day | Thu 10/26/06 | Thu 10/26/06 | | | |
| 400 | d) Blackened soil area - FINAL | 1 day | Thu 9/14/06 | Thu 9/14/06 | | | |
| 401 | e) PLF-05 fill sampling - FINAL | 1 day | Fri 11/3/06 | Fri 11/3/06 | | | |
| 402 | Set #8 ERM Ponds Supplemental Investigation | 43 days | Thu 9/14/06 | Thu 10/26/06 | | | |
| 403 | a) Discrete/composite sampling event - FINAL | 1 day | Tue 10/10/06 | Tue 10/10/06 | | | |
| 404 | b) Sunset North Area - FINAL | 1 day | Thu 9/14/06 | Thu 9/14/06 | | | |
| 405 | c) Sunset North Area - October PR samples - FINAL | 1 day | Thu 10/26/06 | Thu 10/26/06 | | | |
| 406 | Set #9 TIMET Ponds Investigation - FINAL | 1 day | Fri 11/3/06 | Fri 11/3/06 | | | |
| 407 | Set #12 Spray Wheel Investigation - FINAL | 1 day | Wed 10/25/06 | Wed 10/25/06 | | | |
| 408 | Set #14 "College Site" Investigation - FINAL | 1 day | Wed 11/8/06 | Wed 11/8/06 | | | |
| 409 | Set #16 Tuscany Hills Pipeline Vault investigation - FINAL | 1 day | Thu 8/31/06 | Thu 8/31/06 | | | |
| 410 | Set #18 WRF Investigation By CoH - FINAL | 1 day | Mon 5/1/06 | Mon 5/1/06 | | | |
| 411 | Set #19 Mohawk Supplemental Investigation (PR samples) - FINAL | 1 day | Fri 12/8/06 | Fri 12/8/06 | | | |
| 412 | Set #20 Sunset North Investigations | 131 days | Fri 10/20/06 | Tue 2/27/07 | | | |
| 413 | a) PLG-05 GW Characterization - FINAL | 1 day | Fri 1/5/07 | Fri 1/5/07 | | | |
| 414 | b) Sampling of "unimpacted" areas - FINAL | 1 day | Fri 10/20/06 | Fri 10/20/06 | | | |
| 415 | c) Supp. Invest. (PR samples) - FINAL | 1 day | Tue 2/27/07 | Tue 2/27/07 | | | |
| 416 | Set #21 Southern RIBs Investigation - FINAL | 1 day | Wed 10/25/06 | Wed 10/25/06 | | | |
| 417 | Set #22 Pre-GW Policy Upper Ponds GW Investigation - FINAL | 1 day | Tue 9/26/06 | Tue 9/26/06 | | | |
| 418 | Set #23 Spray Wheel Investigation [M] - Geotechnical Only. No DVSR | 1 day | Wed 2/15/06 | Wed 2/15/06 | | | |
| 419 | Set #25 Pittman Lateral Bypass Pipeline Investigation - FINAL | 1 day | Wed 10/25/06 | Wed 10/25/06 | | | |
| 420 | Set #26 Alpha Ditch Investigation - FINAL | 1 day | Tue 9/26/06 | Tue 9/26/06 | | | |
| 421 | Set #32 Alpha Ditch Investigation - FINAL | 1 day | Tue 9/26/06 | Tue 9/26/06 | | | |
| 422 | Set #33 Spray Wheel Salt Investigation - FINAL | 1 day | Tue 9/26/06 | Tue 9/26/06 | | | |

BRC ENVIRONMENTAL CLEANUP

| ID | Task Name | Duration | Start | Finish | Predecessors | Qtr 1, 200 | |
|-----|---|------------------|---------------------|---------------------|--------------|------------|-----|
| | | | | | | Jan | Feb |
| 423 | Set #37 First Quarterly GW Monitoring - FINAL | 1 day | Tue 1/2/07 | Tue 1/2/07 | | | |
| 424 | Set #38 Second Quarterly GW Monitoring - FINAL | 1 day | Tue 1/2/07 | Tue 1/2/07 | | | |
| 425 | Set #39 Waste Sampling - FINAL | 1 day | Fri 11/3/06 | Fri 11/3/06 | | | |
| 426 | | | | | | | |
| 427 | Other Current/Old Data Sets | 456 days | Mon 4/3/06 | Mon 7/2/07 | | | |
| 428 | Set #1 Environmental Conditions Investigation | 17 days | Tue 10/10/06 | Thu 10/26/06 | | | |
| 429 | b) Exclusion Areas - FINAL | 1 day | Tue 10/10/06 | Tue 10/10/06 | | | |
| 430 | c) Parcel 5/6 confirmation sampling - FINAL | 1 day | Thu 10/26/06 | Thu 10/26/06 | | | |
| 431 | Set #2 Warm Springs Rd Investigation - FINAL | 1 day | Wed 10/25/06 | Wed 10/25/06 | | | |
| 432 | Set #5 Pittman Lateral GW Monitoring | 10 days | Wed 11/29/06 | Fri 12/8/06 | | | |
| 433 | a) Initial Monitoring Event - FINAL | 1 day | Wed 11/29/06 | Wed 11/29/06 | | | |
| 434 | b) Follow-Up Monitoring Event - FINAL | 1 day | Fri 12/8/06 | Fri 12/8/06 | | | |
| 435 | Set #17 Conveyor Alignment Investigation - FINAL | 1 day | Thu 11/2/06 | Thu 11/2/06 | | | |
| 436 | Set #31 TRECO Investigation - FINAL | 1 day | Mon 4/3/06 | Mon 4/3/06 | | | |
| 437 | Set #34 BRC/TIMET Shallow Soil Background Investigation - FINAL | 1 day | Mon 7/2/07 | Mon 7/2/07 | | | |
| 438 | | | | | | | |
| 439 | Set #2 2004 Eastside Hydro Investigation (Revised) - FINAL | 1 day | Thu 2/1/06 | Thu 2/1/06 | | | |
| 440 | | | | | | | |
| 441 | | | | | | | |
| 442 | New Data Sets | 1582 days | Wed 2/15/06 | Tue 6/15/10 | | | |
| 443 | Set #41 Slit Trench Step-Out Sampling - FINAL | 1 day | Mon 1/8/07 | Mon 1/8/07 | | | |
| 444 | Set #42 Third Quarterly GW Monitoring - FINAL | 1 day | Wed 4/25/07 | Wed 4/25/07 | | | |
| 445 | Set #43 Parcel 4A-4B - FINAL | 1 day | Tue 8/21/07 | Tue 8/21/07 | | | |
| 446 | Set #44 Fourth Quarterly GW Monitoring - FINAL | 1 day | Tue 7/10/07 | Tue 7/10/07 | | | |
| 447 | Set #45 Orphan and Accumulated Small Data Sets - FINAL | 1 day | Mon 10/22/07 | Mon 10/22/07 | | | |
| 448 | Set #46 North-East Area Well Boring Soils - FINAL | 1 day | Thu 12/6/07 | Thu 12/6/07 | | | |
| 449 | Set #47 Upgradient Qa GW and Soils Along Borings - FINAL | 1 day | Fri 2/22/08 | Fri 2/22/08 | | | |
| 450 | Set #45e Suppl. 4A/4B - FINAL | 1 day | Fri 6/6/08 | Fri 6/6/08 | | | |
| 451 | Set #34b Suppl. Shallow Background Set - FINAL | 1 day | Mon 6/9/08 | Mon 6/9/08 | | | |
| 452 | Set #34c Deep Background Soils Set - FINAL | 1 day | Wed 6/25/08 | Wed 6/25/08 | | | |
| 453 | Set #48 CAMU 2007 GW - FINAL | 1 day | Mon 3/24/08 | Mon 3/24/08 | | | |
| 454 | Set #49 Eastside Deep Wells Soils - FINAL | 1 day | Mon 9/8/08 | Mon 9/8/08 | | | |
| 455 | Set #50 Sewer Line Investigations - Horizontal - FINAL | 1 day | Wed 10/1/08 | Wed 10/1/08 | | | |
| 456 | Set #50a Sewer Line Rescrape - FINAL | 1 day | Thu 1/8/09 | Thu 1/8/09 | | | |
| 457 | Set #51 Fifth Quarterly Eastside GW Monitoring - FINAL | 1 day | Sat 11/1/08 | Sat 11/1/08 | | | |
| 458 | Set #52 Mohawk Confirmation - FINAL | 1 day | Thu 10/23/08 | Thu 10/23/08 | | | |
| 459 | Set #52a Mohawk Rescrape Samples - FINAL | 1 day | Fri 6/19/09 | Fri 6/19/09 | | | |
| 460 | Set #52b Mohawk R2 and R3 Rescrape Samples - FINAL | 1 day | Wed 10/1/09 | Wed 10/1/09 | | | |

BRC ENVIRONMENTAL CLEANUP

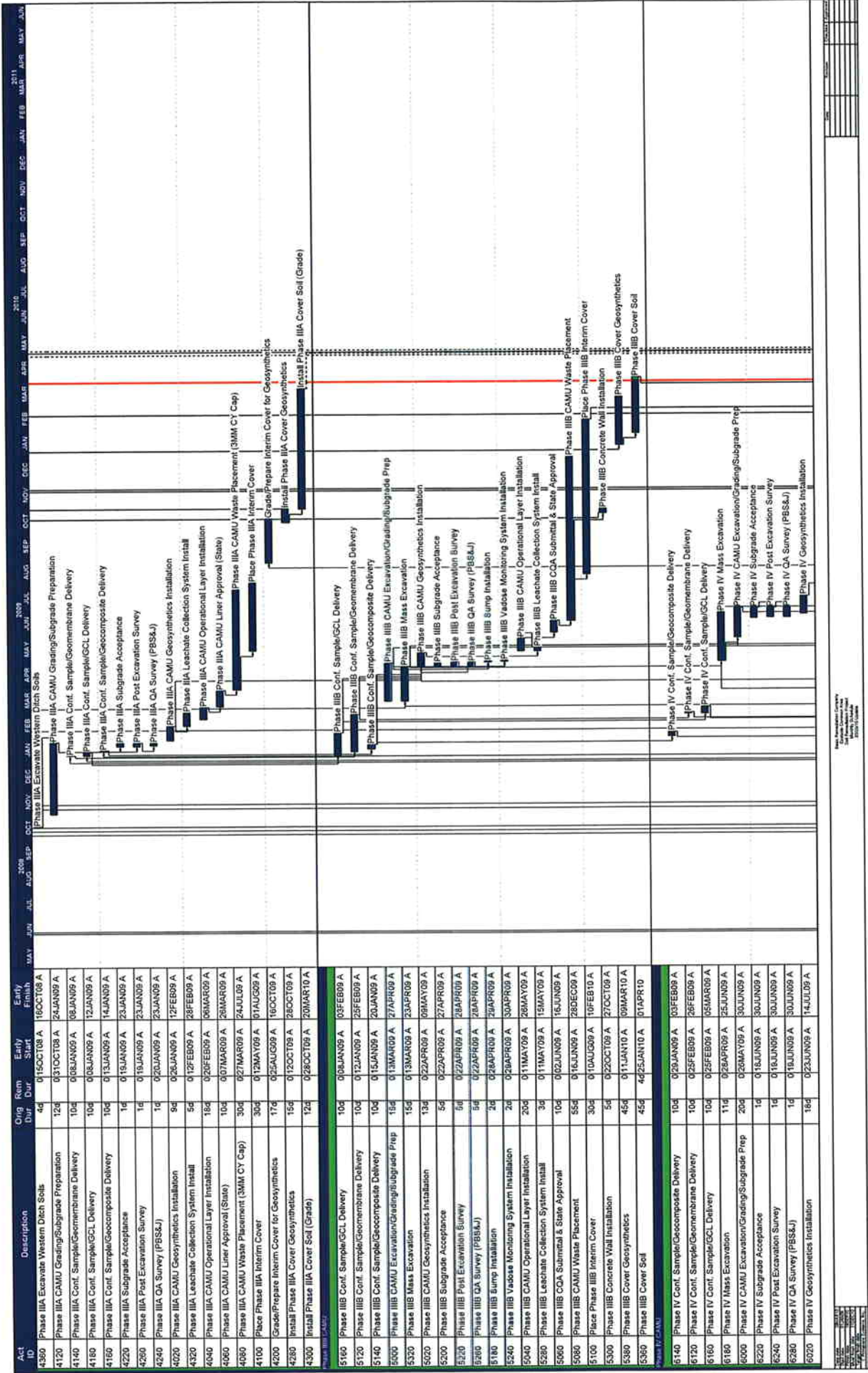
Set #40 Offsite Dust Sampling - FINAL

Mon 11/20/06

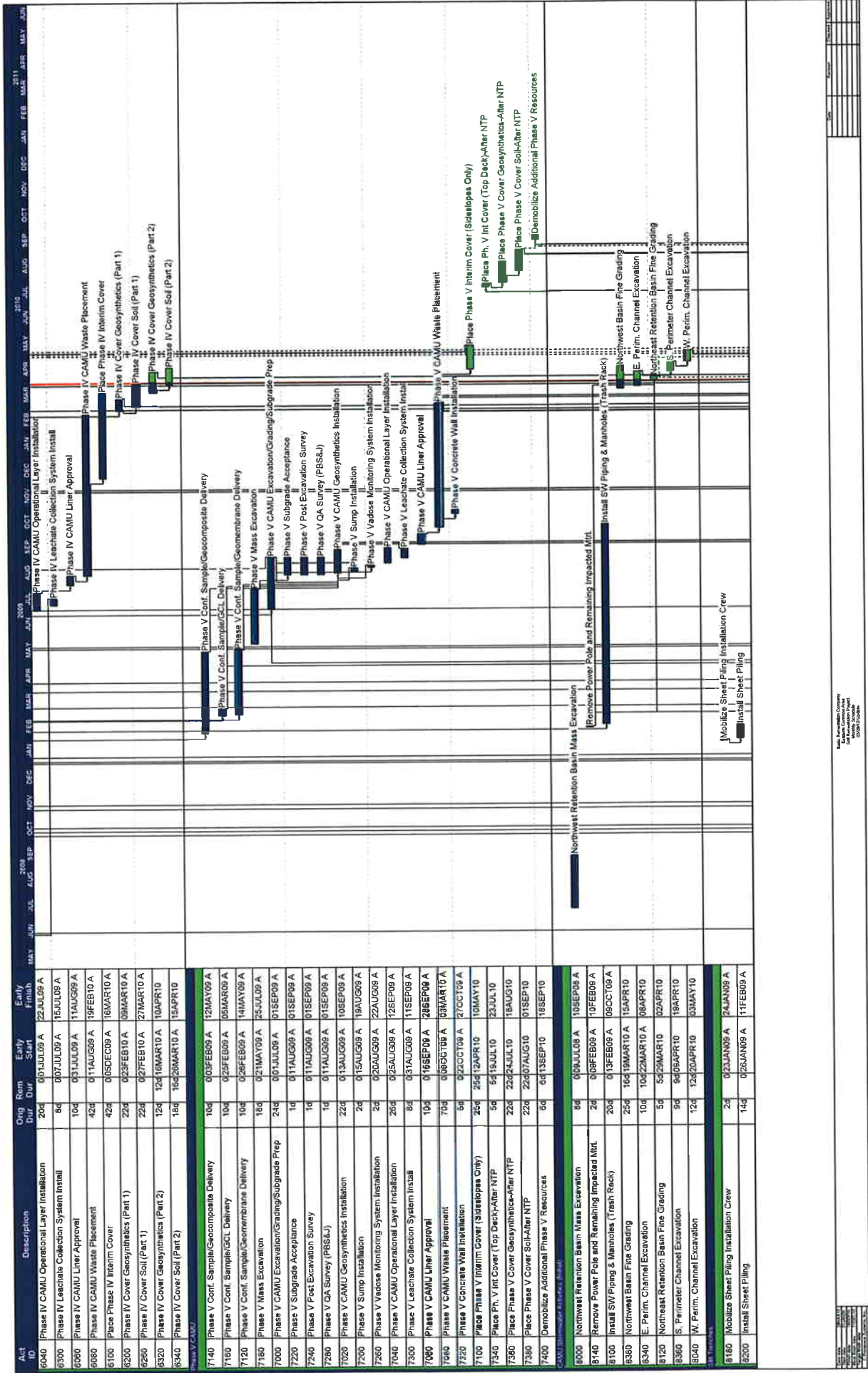
| ID | Task Name | Duration | Start | Finish | Predecessors | Qtr 1, 200 | |
|-----|--|----------|--------------|--------------|--------------|------------|-----|
| | | | | | | Jan | Feb |
| 461 | Set #53 Southern RIBs - FINAL | 1 day | Wed 3/10/10 | Wed 3/10/10 | | | |
| 462 | Set #53a Southern RIBs Supplemental - FINAL | 1 day | Mon 2/15/10 | Mon 2/15/10 | | | |
| 463 | Set #54 Western Hook - To NDEP (in NDEP Review) | 1 day | Wed 3/31/10 | Wed 3/31/10 | | | |
| 464 | Set #55a CAMU Baseline GW Monitoring Q1 - FINAL | 1 day | Tue 6/16/09 | Tue 6/16/09 | | | |
| 465 | Set #55b CAMU Baseline GW Monitoring Q2 - FINAL | 1 day | Fri 7/31/09 | Fri 7/31/09 | | | |
| 466 | Set #55c CAMU Baseline GW Monitoring Q3 - FINAL | 1 day | Thu 11/12/09 | Thu 11/12/09 | | | |
| 467 | Set #55d CAMU Baseline GW Monitoring Q4 - FINAL | 1 day | Sat 1/30/10 | Sat 1/30/10 | | | |
| 468 | Set #56 Offsite Flux - To NDEP (with VI Report) | 1 day | Thu 4/30/09 | Thu 4/30/09 | | | |
| 469 | Set #57 2009 Eastside GW Investigation (Soils Portion) - FINAL | 1 day | Wed 12/23/09 | Wed 12/23/09 | | | |
| 470 | Set #58 2009 Eastside GW Investigation (GW Portion) - FINAL | 1 day | Sat 1/16/10 | Sat 1/16/10 | | | |
| 471 | Set #59 Sunset North - FINAL | 1 day | Wed 3/17/10 | Wed 3/17/10 | | | |
| 472 | Set #60 Galleria - To NDEP (in NDEP Review) | 1 day | Tue 3/16/10 | Tue 3/16/10 | | | |
| 473 | Set #61 First 8 rows - To NDEP | 1 day | Sat 5/15/10 | Sat 5/15/10 | | | |
| 474 | Set #62 Open Space - To NDEP | 1 day | Sat 5/1/10 | Sat 5/1/10 | | | |
| 475 | Set #63 Upper Ponds - To NDEP | 1 day | Fri 4/16/10 | Fri 4/16/10 | | | |
| 476 | Set #64 Spray Wheel - To NDEP | 1 day | Mon 5/31/10 | Mon 5/31/10 | | | |
| 477 | Set #65 TIMET Ponds - To NDEP | 1 day | Tue 6/15/10 | Tue 6/15/10 | | | |
| 478 | Set #66 Staging Area - To NDEP [TBD] | 1 day | Wed 2/15/06 | Wed 2/15/06 | | | |
| 479 | Set #67 Western Hook Arsenic - Combined with Set #54 - To NDEP (in Rev | 1 day | Wed 3/31/10 | Wed 3/31/10 | | | |
| 480 | Set #68 Indoor Radon + GW Radon Study - To NDEP (w/Report) | 1 day | Thu 3/25/10 | Thu 3/25/10 | | | |
| 481 | Set #69 Side by Side Flux + Soil Gas Study - To NDEP [TBD] | 1 day | Fri 3/12/10 | Fri 3/12/10 | | | |
| 482 | | | | | | | |
| 483 | CONSTRUCTION-RELATED DETAILS ARE PROVIDED IN | 1 day? | Wed 2/15/06 | Wed 2/15/06 | | | |
| 484 | THE MONTHLY CONSTRUCTION SCHEDULE | 1 day? | Wed 2/15/06 | Wed 2/15/06 | | | |

| Art No | Description | Orig Dur | Rm Dur | Early Start | Early Finish |
|-----------|--|-------------|-----------|----------------|-----------------|
| 1100 | Pre-Mobilization Submittals | 51d | | 02/1APR08 A | 16/JUN08 A |
| 500 | Contract Execution | 0 | | 04/JUN08 A | |
| 1108 | Submit SWPPP | 1d | | 06/JUN08 A | 04/SEP08 A |
| 1111 | Submit SPCC Plan | 1d | | 06/JUN08 A | 02/SEP08 A |
| 1104 | Submit Site Security Plan | 1d | | 01/JUL08 A | 26/AUG08 A |
| 1109 | Submit Water Management Plan | 1d | | 01/JUL08 A | 25/AUG08 A |
| 1110 | Submit H&S Plan | 1d | | 01/JUL08 A | 17/SEP08 A |
| 1180 | Prepare Pilot Study Report | 8d | | 01/JUL08 A | 11/JUL08 A |
| 1102 | Submit Staging Area Plan | 1d | | 02/JUN08 A | 02/SEP08 A |
| 1112 | Submit Construction Facilities Lay Plan | 1d | | 02/JUN08 A | 12/SEP08 A |
| 1113 | Submit Staging Area Layout Plan | 1d | | 02/JUN08 A | 02/SEP08 A |
| 1114 | Submit Stockpile Plan | 1d | | 02/JUN08 A | 14/SEP08 A |
| 1142 | Submit Construction Facilities Layout Plan | 1d | | 02/JUN08 A | 12/SEP08 A |
| 1116 | Submit Dust Control Permit & Mitigation Plan | 1d | | 01/JUL08 A | 14/AUG08 A |
| 1102 | Submit Pilot Study Report | 1d | | 01/JUL08 A | 15/JUL08 A |
| 1120 | Western/BRC Approve Site Facilities Plan | 1d | | 05/SEP08 A | 04/SEP08 A |
| 1212 | Finalize Haul Road Design Plan (Trench/Timed) | 1d | | 01/SEP08 A | 02/OCT08 A |
| 9920 | Contract Compl. Date (Basic Scope) Aug. 31, 2010 | 0 | 0 | | 31/AUG10 * |
| 1220 | Excavate, Conduit, Wire from Pedestal to Trailer | 3d | | 02/SEP08 A | 13/OCT08 A |
| 1130 | Nevada Power to Set Power Poles & Pull Wire | 5d | | 02/OCT08 A | 01/OCT08 A |
| 1070 | Finalize Power Connection/Demobilize Generators | 7d | | 03/NOV08 A | 10/NOV08 A |
| 1000 | Mobilization | 6d | | 01/JUN08 A | 23/JUN08 A |
| 1022 | Grade Area for Project Trailers, Parking, Access | 3d | | 02/JUN08 A | 01/JUL08 A |
| 1020 | Install Erosion & Sed Controls (BMP's) | 6d | | 02/JUN08 A | 01/AUG08 A |
| 1040 | Install Trailers, Parking Areas, Fence, Etc | 6d | | 02/JUN08 A | 01/JUL08 A |
| 1042 | Install SZ CRZ EZ Fencing (Initial) | 12d | | 02/JUN08 A | 10/OCT08 A |
| 1200 | NDOT Meeting with BRC/ENACT/Westin (1pm) | 1d | | 01/AUG08 A | 11/AUG08 A |
| 1220 | COH Meeting with BRC/ENACT/Westin | 1d | | 02/AUG08 A | 27/AUG08 A |
| 1090 | Install Fence along Tined/Trench Property | 10d | | 02/AUG08 A | 27/SEP08 A |
| 1150 | Construct H-Structure, Conduit, Panel | 6d | | 03/SEP08 A | 05/SEP08 A |
| 1240 | Perform Dry Run (Pickup Truck Run) | 1d | | 04/SEP08 A | 04/SEP08 A |
| 1120 | Construct Decontamination Areas & Vacuum Station | 6d | | 04/SEP08 A | 16/SEP08 A |
| 1300 | Install Conduit from H-Structure to Trailers | 2d | | 06/SEP08 A | 15/SEP08 A |
| 1080 | Haul Road Construction (Fill, Pipe, Grading) | 6d | | 01/SEP08 A | 07/OCT08 A |
| 1030 | Complete Entrance Grading | 1d | | 01/SEP08 A | 17/SEP08 A |
| 1052 | Complete Asphalt Pads (Orally) | 2d | | 01/SEP08 A | 16/SEP08 A |
| 1160 | Complete Milling and Asphalt Overlay (Public) | 2d | | 01/SEP08 A | 25/SEP08 A |
| 1260 | Remove Weather Station (TBD) | 1d | | 01/SEP08 A | 20/SEP08 A |
| 1032 | Install Rock Trusscut Pads | 2d | | 02/SEP08 A | 24/SEP08 A |
| 1170 | Embark to Inspect Backfilling of Conduit | 1d | | 02/SEP08 A | 24/SEP08 A |
| 1160 | Embark to Energize H-Structure (Ert) | 5d | | 02/SEP08 A | 26/SEP08 A |
| 1230 | Complete Decon Pad Rinse Water Ponds | 1d | | 02/SEP08 A | 01/OCT08 A |
| 1340 | Set-up Decon Pad Water Supply Tanks | 1d | | 02/SEP08 A | 01/OCT08 A |
| 1050 | Install Trailer Area Cap Rock | 2d | | 01/OCT08 A | 13/OCT08 A |
| 1260 | Re-install Initial Traffic Control Devices | 1d | | 02/OCT08 A | 21/OCT08 A |

| Act ID | Orig ID | Rem Dur | Early Start | Early Finish | Description |
|--------|---------|---------|-------------|--------------|--|
| 1080 | 1080 | 2d | 08DEC09 A | 08DEC09 A | Clearing & Grubbing |
| 1140 | 1140 | 11d | 11MAY10 | 22MAY10 | Demobilize Basic Scope Resources |
| 1999 | 1999 | 2d | 02JUL08 A | 05JUL08 A | Phase I CAMU Resources |
| 2000 | 2000 | 9d | 07JUL08 A | 07AUG08 A | Phase I CAMU Excavation/Grading/Subgrade Prep |
| 2010 | 2010 | 5d | 07JUL08 A | 11JUL08 A | Phase I Samples Liner Testing |
| 2015 | 2015 | 3d | 14JUL08 A | 18AUG08 A | Phase I Liner Delivery |
| 2030 | 2030 | 1d | 25JUL08 A | 26AUG08 A | Phase I As-built Survey |
| 2050 | 2050 | 1d | 28JUL08 A | 29AUG08 A | Phase I QA Survey |
| 2070 | 2070 | 13d | 01AUG09 A | 21AUG09 A | Phase I CAMU Liner Installation |
| 2110 | 2110 | 1d | 01AUG09 A | 08AUG09 A | Phase I Subgrade Acceptance |
| 2110 | 2110 | 2d | 11AUG09 A | 12AUG09 A | Phase I CAMU Vadose Monitoring System Install |
| 2040 | 2040 | 12d | 02AUG08 A | 11SEP08 A | Phase I CAMU Oper. Lay. Placement (W. Ditch Mat) |
| 2090 | 2090 | 6d | 02AUG08 A | 08SEP08 A | Phase I CAMU Leachate Collection System Install |
| 2060 | 2060 | 8d | 12SEP08 A | 07OCT08 A | Phase I CAMU Liner Approval |
| 2060 | 2060 | 46d | 021OCT08 A | 21NOV08 A | Phase I CAMU Waste Placement (From Eastside) |
| 2120 | 2120 | 15d | 01SEP08 A | 01OCT08 A | Place Phase I Interim Cover & Viqueen |
| 2130 | 2130 | 5d | 02OCT08 A | 27OCT08 A | Phase I Concrete Wall Installation (Vadose) |
| 2160 | 2160 | 40d | 08JAN10 A | 20FEB10 A | Phase I Cover Geosynthetics (Remaining) |
| 2170 | 2170 | 40d | 023JAN10 A | 25MAR10 A | Phase I Cover Soil (Remaining) |
| 3000 | 3000 | 25d | 023JUL08 A | 15AUG08 A | Phase II CAMU Mass Excavation/Fill (Initial) |
| 3005 | 3005 | 25d | 028JUL08 A | 24NOV08 A | Phase II CAMU Grading/Subgrade Prep |
| 3025 | 3025 | 20d | 02AUG08 A | 11SEP08 A | Excavate Western Ditch-Use for Oper. Layer |
| 3280 | 3280 | 15d | 08SEP08 A | 29SEP08 A | Phase II Geomembrane Delivery |
| 3300 | 3300 | 15d | 08SEP08 A | 14OCT08 A | Phase II Geocomposite Delivery |
| 3320 | 3320 | 20d | 022SEP08 A | 24OCT08 A | Phase II CAMU Mass Excavation/Fill (Final) |
| 3260 | 3260 | 9d | 02SEP08 A | 06OCT08 A | Phase II GCL Delivery |
| 2045 | 2045 | 18d | 06OCT08 A | 31OCT08 A | Excavate Remain. Phase II Western Ditch Soils |
| 3140 | 3140 | 12d | 03OCT08 A | 24NOV08 A | Phase II CAMU Post Excavation Grade Survey |
| 3240 | 3240 | 12d | 031OCT08 A | 24NOV08 A | Phase II CAMU QA Survey (PB&U) |
| 3020 | 3020 | 21d | 03NOV08 A | 05DEC08 A | Phase II CAMU Geosynthetics Installation |
| 3220 | 3220 | 21d | 03NOV08 A | 24NOV08 A | Phase II Subgrade Acceptance |
| 3180 | 3180 | 2d | 04NOV08 A | 05NOV08 A | Phase II CAMU Sump Excavation |
| 3140 | 3140 | 3d | 04NOV08 A | 22NOV08 A | Phase II CAMU Vadose Monitoring System Install |
| 3040 | 3040 | 12d | 01NOV08 A | 10DEC08 A | Phase II CAMU Operations Layer Installation |
| 3160 | 3160 | 5d | 021NOV08 A | 06DEC08 A | Phase II CAMU Leachate Collection System Install |
| 3060 | 3060 | 10d | 01DEC08 A | 24DEC08 A | Phase II CAMU Liner Approval (State) |
| 3080 | 3080 | 100d | 06JAN09 A | 12NOV09 A | Phase II CAMU Waste Placement |
| 3100 | 3100 | 15d | 07JUL09 A | 29DEC09 A | Place Phase II Interim Cover |
| 3200 | 3200 | 5d | 02OCT09 A | 27OCT09 A | Phase II CAMU Concrete Wall Install (Vadose) |
| 3340 | 3340 | 11d | 09NOV09 A | 20NOV09 A | Phase II Cover Geosynthetics (S & W Slope Only) |
| 3360 | 3360 | 16d | 01NOV09 A | 25MAR10 A | Phase II Cover Soil (So. & W Slope Only-Grade) |
| 3380 | 3380 | 40d | 06JAN10 A | 20FEB10 A | Phase II Cover Geosynthetics (Remaining) |
| 3400 | 3400 | 40d | 01JAN10 A | 20MAR10 A | Phase II Cover Soil (Grade) |
| 4000 | 4000 | 12d | 01OCT08 A | 06OCT08 A | Phase IIIA CAMU Mass Excavation |



1. All dates are estimates and subject to change.
 2. All dates are subject to change.
 3. All dates are subject to change.



100% Complete
 90% Complete
 50% Complete
 20% Complete
 10% Complete
 5% Complete
 0% Complete

| Act ID | Description | Orig | Rm | Early Start | Early Finish |
|--------|--|------|---------------|-------------|--------------|
| 8050 | Sit Trench Excavation-Phase III (27,857 CY) | 12d | 027JAN09 A | 27APR09 A | |
| 9160 | Sit Trench Excavation - Phase IV (187,000 CY) | 75d | 027FEB09 A | 03JUN09 A | |
| 9080 | Sit Trench Backfill - Phase IIB (116,535 CY) | 15d | 02MAR09 A | 28APR09 A | |
| 9280 | Sit Trench Backfill - Phase IV (128,649 CY) | 12d | 03MAY09 A | 13JUN09 A | |
| 8220 | Re-mobilize Sheet Piling Installation Crew | 1d | 02APR09 A | 20APR09 A | |
| 8240 | Remove/Decontaminate Sheet Piling | 2d | 02APR09 A | 23APR09 A | |
| 8260 | Sit Trench Excavation - Phase V | 35d | 02MAY09 A | 14JUL09 A | |
| 9300 | Sit Trench Backfill - Phase V | 25d | 01JUN09 A | 26JUL09 A | |
| 9320 | Size Reduce (Shred) Ties | 2d | 02JUL09 A | 28JUL09 A | |
| 9240 | BMI North Geomembrane Delivery | 15d | 011NOV08 A | 06JAN09 A | |
| 9160 | BMI North GCL Delivery | 15d | 012NOV08 A | 12JAN09 A | |
| 9160 | BMI North Geocomposite Delivery | 15d | 017NOV08 A | 13JAN09 A | |
| 9130 | Grassy/Prepare BMI North Surface (Initial) | 6d | 020NOV08 A | 17JAN09 A | |
| 9135 | BMI North Landfill Liner Installation (Initial) | 58d | 06DEC08 A | 19FEB09 A | |
| 9142 | Screen & Install BMI North Cover Soil (Initial) | 58d | 017DEC08 A | 28MAR09 A | |
| 9140 | Finish Grade BMI North Cover Soil | 30d | 01JAN10 A | 23MAR10 A | |
| 9520 | Grade/Prepare BMI North Subgrade (Final) | 12d | 0427FEB10 A | 07APR10 | |
| 9540 | BMI N Liner Installation | 12d | 12d 12APR10 | 24APR10 | |
| 9560 | Install BMI North Cover Soil (Final) | 10d | 10d 26APR10 | 06MAY10 | |
| 9182 | BMI North - Soil Binder/Gravel Mulch (Final) | 4d | 4d 07MAY10 | 11MAY10 | |
| 9202 | Complete Grading BMI N. Cover Soil | 10d | 10d 07MAY10 | 18MAY10 | |
| 9440 | BMI South Geocomposite Delivery | 5d | 019MAR09 A | 11MAY09 A | |
| 9100 | Grade/Prepare BMI South Surface (Initial) | 3d | 011MAY09 A | 15MAY09 A | |
| 9420 | BMI South Geomembrane Delivery | 1d | 012MAY09 A | 12MAY09 A | |
| 9110 | BMI South Geosynthetic Installation (Initial) | 14d | 013MAY09 A | 19MAY09 A | |
| 9400 | BMI South GCL Delivery | 3d | 013MAY09 A | 15MAY09 A | |
| 9120 | Install BMI South Cover Soil (Initial) | 6d | 021MAY09 A | 15AUG09 A | |
| 9460 | Grade/Prepare BMI South Surface (Final) | 8d | 022MAY10 A | 10MAY10 A | |
| 9488 | BMI South Liner Installation | 6d | 18d 17MAY10 A | 28APR10 | |
| 9500 | BMI South Cover Soil (Final) | 4d | 16d 06APR10 | 27APR10 | |
| 9170 | BMI South Soil Binder/Gravel Mulch (Final) | 3d | 3d 28APR10 | 30APR10 | |
| 9340 | Soil Conditioning/Blending | 503d | 022MAR08 A | 11OCT09 A | |
| 9000 | Excavate Staged Material (Beta Ditch & HP-3) | 03d | 021OCT08 A | 20MAR09 A | |
| 9360 | Haul Materials from Eastside to CAMU | 346d | 021OCT08 A | 03MAR10 A | |
| 9040 | Excavate Parcel 7A (101,386 cy *) | 41d | 013NOV08 A | 16MAY09 A | |
| 9090 | Excavate Remainder of Eastside Area (E. to W.) | 264d | 002FEB09 A | 03MAR10 A | |
| 9640 | Size Reduce (Shred) Eastside Debris & SW-8 Liner | 6d | 02JUL09 A | 03AUG09 A | |
| 9600 | Screen for Phase V Operations Layer | 22d | 017AUG09 A | 04SEP09 A | |
| 9680 | Eastside Day Haul to CAMU | 10d | 00SEP09 A | 26SEP09 A | |
| 9700 | Rest Day Haul to CAMU | 26d | 08OCT09 A | 23DEC09 A | |
| 9720 | Final Day Haul to CAMU from Eastside | 11d | 00JAN10 A | 06FEB10 A | |
| 9200 | Excavate Beta Triangle & Haul Roads | 12d | 00MAR10 A | 19MAR10 A | |
| 9320 | Eastside Performance Criteria Testing/Approval | 65d | 41d 04MAR10 A | 07MAY10 | |
| 9760 | Mobilize to Perform Re-Scrapes (if necessary) | 1d | 1d 06MAY10 | 06MAY10 | |
| 9740 | Ex-Haul Remains, Beta Ditch Soil (& Sewer Line) | 6d | 6d 10MAY10 * | 15MAY10 | |

The Gantt chart illustrates the project timeline from January 2009 to May 2010. Major milestones include the completion of Sit Trench Excavation-Phase III in April 2009, the start of Sit Trench Excavation-Phase IV in May 2009, and the completion of BMI North Geomembrane Delivery in November 2008. The chart also shows the progression of BMI South Geomembrane Delivery and the final grading and hatching work completed in May 2010.

**Basic Remediation Company
Excelsite Common Area
Soil Remediation Project
Monthly Schedule
000000 Update**

| Act ID | Description | Orig Dur | Rev Dur | Early Start | Early Finish |
|--------|--|----------|--------------|-------------|--------------|
| 9800 | Perform Recraps As Necessary (Estimated) | 60d | 60d | 10MAY10 | 17JUL10 |
| 1202 | Construct Perimeter Ditch/Berm | 3d | 02JUL08 A | 29JUL08 A | |
| 1182 | Install Orange Safety Fence Around Perimeter | 6d | 02JUL08 A | 08AUG08 A | |
| 1222 | Spray Chemlock on Slopesides | 2d | 08AUG08 A | 08AUG08 A | |
| 1242 | Chemlock Curing Period | 1d | 09AUG08 A | 10AUG08 A | |
| 1262 | Excavate Sewer Realignment Area | 4d | 011AUG08 A | 15AUG08 A | |
| 1282 | Excavate Impacted Material from NW Basin | 25d | 031DEC08 A | 12MAR09 A | |
| 1302 | Backfill NW Basin Over-Excavation Area w/Clean | 15d | 007FEB09 A | 20MAR09 A | |
| 1322 | Compl. Grading of NE Basin and Adj. Areas (Hold) | 30d | 004MAY09 A | 12JUN09 A | |
| 1342 | Excavate Impacted Material from NE Basin | 8d | 004NOV08 A | 15NOV08 A | |
| 1362 | Backfill NE Basin Over-Excavation Area w/Clean | 7d | 020NOV08 A | 20FEB09 A | |
| 1382 | Compl. Grading of NE Basin and Adj. Areas (Hold) | 3d | 019FEB09 A | 26FEB09 A | |
| 1402 | Excavate 6' Over Phase IIIB - Place in CAMU | 3d | 018DEC08 A | 24DEC08 A | |
| 1422 | Excavate 6' Over Phase V, IV, and IIIB - CAMU | 18d | 014JAN09 A | 12FEB09 A | |
| 1442 | Obtain Access to Adjacent Property | 1d | 26FEB09 A | 26FEB09 A | |
| 1462 | Install Fence Around Contamination Work Area | 3d | 03MAR09 A | 04MAR09 A | |
| 1482 | Initial Bypass Road | 2d | 05MAR09 A | 05MAR09 A | |
| 1502 | Remove Remaining Impacted Soil from Orig Rd | 10d | 05MAR09 A | 14MAR09 A | |
| 1522 | Obtain Sample Results for Offsite Area | 1d | 021MAR09 A | 21MAR09 A | |
| 1542 | Backfill Orig. Road & Offsite Area | 2d | 03APR09 A | 05APR09 A | |
| 1562 | Perform Hook Cleaning/Grubbing Activities | 25d | 013MAY09 A | 05JUN09 A | |
| 1582 | Clear Sampling Paths in Debris Field | 2d | 03JUN09 A | 04JUN09 A | |
| 1602 | Scrape & Stockpile Hook Area Ditch Sediment | 8d | 04JUN09 A | 01JUL09 A | |
| 1622 | Load/Haul Hook Area Sediment to CAMU | 14d | 02JUL09 A | 23JUL09 A | |
| 1642 | Size Reduce (Shred) Hook Debris/Tamarisk | 45d | 02JUL09 A | 14SEP09 A | |
| 1662 | Restart Load/Haul Hook Area Soil to CAMU | 12d | 04AUG09 A | 19AUG09 A | |
| 1682 | Scrape/Stockpile Hook Area Soil | 30d | 020AUG09 A | 08SEP09 A | |
| 1702 | Restart Load/Haul Hook Area Soil to CAMU | 5d | 01SEP09 A | 16SEP09 A | |
| 1722 | Scrape/Stockpile Hook Area Soil | 6d | 021SEP09 A | 26SEP09 A | |
| 1742 | Restart Load/Haul Hook Area Soil to CAMU | 10d | 028SEP09 A | 14OCT09 A | |
| 1762 | Initiate Galleria scrape/stockpile/loadout | 30d | 014OCT09 A | 02DEC09 A | |
| 1782 | Southern Ribs Scrape & Stockpile | 20d | 014APR09 A | 20MAY09 A | |
| 1802 | Southern Rib Load & Haul to CAMU | 10d | 020MAY09 A | 10JUN09 A | |
| 1822 | Southern Rib Test Trench Excavation | 2d | 06JUL09 A | 07JUL09 A | |
| 1842 | Southern Rib Re-Scrape | 4d | 02DEC09 A | 04DEC09 A | |
| 1862 | Southern Rib Re-Scrape (2) | 2d | 04MAR10 A | 05MAR10 A | |
| 1882 | June Mohawk Scrape, Loadout, & Haul to CAMU | 1d | 011JUN09 A | 11JUN09 A | |
| 1902 | Restart Galleria Scrape/Stockpile/loadout | 14d | 007DEC09 A | 20JAN10 A | |
| 1922 | Perform Tronox Scrape Excavation | 5d | 1422MAR10 A | 29MAR10 A | |
| 9300 | Install Gravel Mulch on Slopesides > 5:1 | 30d | 25423MAR10 A | 26APR10 A | |
| 9320 | Install CAMU Cover - Grouted Riprap - Ph IIIB | 6d | 6431MAR10 A | 06APR10 A | |

| Act ID | Description | Orig Dur | Rem Dur | Early Start | Early Finish | 2008 | | | | | | | | | | | | 2009 | | | | | | | | | | | | 2010 | | | | | | | | | | | | 2011 | | | | | | | | | | | | | | | | | | | | | | | | | | | | | | | | | | | | | | | | | | | | | | | | | | | | | | | | | | | | | | | | | | | | | | | | | | | | | | | | | | | | | | | | | | | | | | | | | | | | | | | | | | | | | | | | | | | | | | | | | | | | | | | | | | | | | | | | | | | | | | | | | | | | | | | | | | | | | | | | | | | | | | | | | | | | | | | | | | | | | | | | | | | | | | | | | | | | | | | | | | | | | | | | | | | | | | | | | | | | | | | | | | | | | | | | | | | | | | | | | | | | | | | | | | | | | | | | | | | | | | | | | | | | | | | | | | | | | | | | | | | | | | | | | | | | | | | | | | | | | | | | | | | | | | | | | | | | | | | | | | | | | | | | | | | | | | | | | | | | | | | | | | | | | | | | | | | | | | | | | | | | | | | | | | | | | | | | | | | | | | | | | | | | | | | | | | | | | | | | | | | | | | | | | | | | | | | | | | | | | | | | | | | | | | | | | | | | | | | | | | | | | | | | | | | | | | | | | | | | | | | | | | | | | | | | | | | | | | | | | | | | | | | | | | | | | | | | | | | | | | | | | | | | | | | | | | | | | | | | | | | | | | | | | | | | | | | | | | | | | | | | | | | | | | | | | | | | | | | | | | | | | | | | | | | | | | | | | | | | | | | | | | | | | | | | | | | | | | | | | | | | | | | | | | | | | | | | | | | | | | | | | | | | | | | | | | | | | | | | | | | | | | | | | | | | | | | | | | | | | | | | | | | | | | | | | | | | | | | | | | | | | | | | | | | | | | | | | | | | | | | | | | | | | | | | | | | | | | | | | | | | | | | | | | | | | | | | | | | | | | | | | | | | | | | | | | | | | | | | | | | | | | | | | | | | | | | | | | | | | | | | | | | | | | | | | | | | | | | | | | | | | | | | | | | | | | | | | | | | | | | | | | | | | | | | | | | | | | | | | | | | | | | | | | | | | | | | | | | | | | | | | | | | | | | | | | | | | | | | | | | | | | | | | | | | | | | | | | | | | | | | | | | | | | | | | | | | | | | | | | | | | | | | | | | | | | | | | | | | | | | | | | | | | | | | | | | | | | | | | | | | | | | | | | | | | | | | | | | | | | | | | | | | | | | | | | | | | | | | | | | | | | | | | | | | | | | | | | | | | | | | | | | | | | | | | | | | | | | | | | | | | | | | | | | | | | | | | | | | | | | | | | | | | | | | | | | | | | | | | | | | | | | | | | | | | | | | | | | | | | | | | | | | | | | | | | | | | | | | | | | | | | | | | | | | | | | | | | | | | | | | | | | | | | | | | | | | | | | | | | | | | | | | | | | | | | | | | | | | | | | | | | | | | | | | | | | | | | | | | | | | | | | | | | | | | | | | | | | | | | | | | | | | | | | | | | | | | |
|--------|--|----------|---------|-------------|--------------|------|-----|-----|-----|-----|-----|-----|-----|-----|-----|-----|-----|------|-----|-----|-----|-----|-----|-----|-----|-----|-----|-----|-----|------|-----|-----|-----|-----|-----|-----|-----|-----|-----|-----|-----|------|-----|-----|-----|-----|-----|-----|-----|--|--|--|--|--|--|--|--|--|--|--|--|--|--|--|--|--|--|--|--|--|--|--|--|--|--|--|--|--|--|--|--|--|--|--|--|--|--|--|--|--|--|--|--|--|--|--|--|--|--|--|--|--|--|--|--|--|--|--|--|--|--|--|--|--|--|--|--|--|--|--|--|--|--|--|--|--|--|--|--|--|--|--|--|--|--|--|--|--|--|--|--|--|--|--|--|--|--|--|--|--|--|--|--|--|--|--|--|--|--|--|--|--|--|--|--|--|--|--|--|--|--|--|--|--|--|--|--|--|--|--|--|--|--|--|--|--|--|--|--|--|--|--|--|--|--|--|--|--|--|--|--|--|--|--|--|--|--|--|--|--|--|--|--|--|--|--|--|--|--|--|--|--|--|--|--|--|--|--|--|--|--|--|--|--|--|--|--|--|--|--|--|--|--|--|--|--|--|--|--|--|--|--|--|--|--|--|--|--|--|--|--|--|--|--|--|--|--|--|--|--|--|--|--|--|--|--|--|--|--|--|--|--|--|--|--|--|--|--|--|--|--|--|--|--|--|--|--|--|--|--|--|--|--|--|--|--|--|--|--|--|--|--|--|--|--|--|--|--|--|--|--|--|--|--|--|--|--|--|--|--|--|--|--|--|--|--|--|--|--|--|--|--|--|--|--|--|--|--|--|--|--|--|--|--|--|--|--|--|--|--|--|--|--|--|--|--|--|--|--|--|--|--|--|--|--|--|--|--|--|--|--|--|--|--|--|--|--|--|--|--|--|--|--|--|--|--|--|--|--|--|--|--|--|--|--|--|--|--|--|--|--|--|--|--|--|--|--|--|--|--|--|--|--|--|--|--|--|--|--|--|--|--|--|--|--|--|--|--|--|--|--|--|--|--|--|--|--|--|--|--|--|--|--|--|--|--|--|--|--|--|--|--|--|--|--|--|--|--|--|--|--|--|--|--|--|--|--|--|--|--|--|--|--|--|--|--|--|--|--|--|--|--|--|--|--|--|--|--|--|--|--|--|--|--|--|--|--|--|--|--|--|--|--|--|--|--|--|--|--|--|--|--|--|--|--|--|--|--|--|--|--|--|--|--|--|--|--|--|--|--|--|--|--|--|--|--|--|--|--|--|--|--|--|--|--|--|--|--|--|--|--|--|--|--|--|--|--|--|--|--|--|--|--|--|--|--|--|--|--|--|--|--|--|--|--|--|--|--|--|--|--|--|--|--|--|--|--|--|--|--|--|--|--|--|--|--|--|--|--|--|--|--|--|--|--|--|--|--|--|--|--|--|--|--|--|--|--|--|--|--|--|--|--|--|--|--|--|--|--|--|--|--|--|--|--|--|--|--|--|--|--|--|--|--|--|--|--|--|--|--|--|--|--|--|--|--|--|--|--|--|--|--|--|--|--|--|--|--|--|--|--|--|--|--|--|--|--|--|--|--|--|--|--|--|--|--|--|--|--|--|--|--|--|--|--|--|--|--|--|--|--|--|--|--|--|--|--|--|--|--|--|--|--|--|--|--|--|--|--|--|--|--|--|--|--|--|--|--|--|--|--|--|--|--|--|--|--|--|--|--|--|--|--|--|--|--|--|--|--|--|--|--|--|--|--|--|--|--|--|--|--|--|--|--|--|--|--|--|--|--|--|--|--|--|--|--|--|--|--|--|--|--|--|--|--|--|--|--|--|--|--|--|--|--|--|--|--|--|--|--|--|--|--|--|--|--|--|--|--|--|--|--|--|--|--|--|--|--|--|--|--|--|--|--|--|--|--|--|--|--|--|--|--|--|--|--|--|--|--|--|--|--|--|--|--|--|--|--|--|--|--|--|--|--|--|--|--|--|--|--|--|--|--|--|--|--|--|--|--|--|--|--|--|--|--|--|--|--|--|--|--|--|--|--|--|--|--|--|--|--|--|--|--|--|--|--|--|--|--|--|--|--|--|--|--|--|--|--|--|--|--|--|--|--|--|--|--|--|--|--|--|--|--|--|--|--|--|--|--|--|--|--|--|--|--|--|--|--|--|--|--|--|--|--|--|--|--|--|--|--|--|--|--|--|--|--|--|--|--|--|--|--|--|--|--|--|--|--|--|--|--|--|--|--|--|--|--|--|--|--|--|--|--|--|--|--|--|--|--|--|--|--|--|--|--|--|--|--|--|--|--|--|--|--|--|--|--|--|--|--|--|--|--|--|--|--|--|--|--|--|--|--|--|--|--|--|--|--|--|--|--|--|--|--|--|--|--|--|--|--|--|--|--|--|--|--|--|--|--|--|--|--|--|--|--|--|--|--|--|--|--|--|--|--|--|--|--|--|--|--|--|--|--|--|--|--|--|--|--|--|--|--|--|--|--|--|--|--|--|--|--|--|--|--|--|--|--|--|--|--|--|--|--|--|--|--|--|--|--|--|--|--|--|--|--|--|--|--|--|--|--|--|--|--|--|--|--|--|--|--|--|--|--|--|--|--|--|--|--|--|--|--|--|--|--|--|--|--|--|--|--|--|--|--|--|--|--|--|--|--|--|--|--|--|--|--|--|--|--|--|--|--|--|--|--|--|--|--|--|--|--|--|--|--|--|--|--|--|--|--|--|--|--|--|--|--|--|--|--|--|--|--|--|--|--|--|--|--|--|--|--|--|--|--|--|--|--|--|--|--|--|--|--|--|--|--|--|--|--|--|--|--|--|--|--|--|--|--|--|--|--|--|--|--|--|--|--|--|--|--|--|--|--|--|--|--|--|--|--|--|--|--|--|--|--|--|--|--|--|
| | | | | | | MAY | JUN | JUL | AUG | SEP | OCT | NOV | DEC | JAN | FEB | MAR | APR | MAY | JUN | JUL | AUG | SEP | OCT | NOV | DEC | JAN | FEB | MAR | APR | MAY | JUN | JUL | AUG | SEP | OCT | NOV | DEC | JAN | FEB | MAR | APR | MAY | JUN | JUL | AUG | SEP | OCT | NOV | DEC | | | | | | | | | | | | | | | | | | | | | | | | | | | | | | | | | | | | | | | | | | | | | | | | | | | | | | | | | | | | | | | | | | | | | | | | | | | | | | | | | | | | | | | | | | | | | | | | | | | | | | | | | | | | | | | | | | | | | | | | | | | | | | | | | | | | | | | | | | | | | | | | | | | | | | | | | | | | | | | | | | | | | | | | | | | | | | | | | | | | | | | | | | | | | | | | | | | | | | | | | | | | | | | | | | | | | | | | | | | | | | | | | | | | | | | | | | | | | | | | | | | | | | | | | | | | | | | | | | | | | | | | | | | | | | | | | | | | | | | | | | | | | | | | | | | | | | | | | | | | | | | | | | | | | | | | | | | | | | | | | | | | | | | | | | | | | | | | | | | | | | | | | | | | | | | | | | | | | | | | | | | | | | | | | | | | | | | | | | | | | | | | | | | | | | | | | | | | | | | | | | | | | | | | | | | | | | | | | | | | | | | | | | | | | | | | | | | | | | | | | | | | | | | | | | | | | | | | | | | | | | | | | | | | | | | | | | | | | | | | | | | | | | | | | | | | | | | | | | | | | | | | | | | | | | | | | | | | | | | | | | | | | | | | | | | | | | | | | | | | | | | | | | | | | | | | | | | | | | | | | | | | | | | | | | | | | | | | | | | | | | | | | | | | | | | | | | | | | | | | | | | | | | | | | | | | | | | | | | | | | | | | | | | | | | | | | | | | | | | | | | | | | | | | | | | | | | | | | | | | | | | | | | | | | | | | | | | | | | | | | | | | | | | | | | | | | | | | | | | | | | | | | | | | | | | | | | | | | | | | | | | | | | | | | | | | | | | | | | | | | | | | | | | | | | | | | | | | | | | | | | | | | | | | | | | | | | | | | | | | | | | | | | | | | | | | | | | | | | | | | | | | | | | | | | | | | | | | | | | | | | | | | | | | | | | | | | | | | | | | | | | | | | | | | | | | | | | | | | | | | | | | | | | | | | | | | | | | | | | | | | | | | | | | | | | | | | | | | | | | | | | | | | | | | | | | | | | | | | | | | | | | | | | | | | | | | | | | | | | | | | | | | | | | | | | | | | | | | | | | | | | | | | | | | | | | | | | | | | | | | | | | | | | | | | | | | | | | | | | | | | | | | | | | | | | | | | | | | | | | | | | | | | | | | | | | | | | | | | | | | | | | | | | | | | | | | | | | | | | | | | | | | | | | | | | | | | | | | | | | | | | | | | | | | | | | | | | | | | | | | | | | | | | | | | | | | | | | | | | | | | | | | | | | | | | | | | | | | | | | | | | | | | | | | | | | | | | | | | | | | | | | | | | | | | | | | | | | | | | | | | | | | | | | | | | | | | | | | | | | | | | | | | | | | | | | | | | | | | | | | | | | | | | | | | |
| 9260 | Install CAMU Cover - Aggregate Base Road | 12d | | 12d03APR10 | 16APR10 | | | | | | | | | | | | | | | | | | | | | | | | | | | | | | | | | | | | | | | | | | | | | | | | | | | | | | | | | | | | | | | | | | | | | | | | | | | | | | | | | | | | | | | | | | | | | | | | | | | | | | | | | | | | | | | | | | | | | | | | | | | | | | | | | | | | | | | | | | | | | | | | | | | | | | | | | | | | | | | | | | | | | | | | | | | | | | | | | | | | | | | | | | | | | | | | | | | | | | | | | | | | | | | | | | | | | | | | | | | | | | | | | | | | | | | | | | | | | | | | | | | | | | | | | | | | | | | | | | | | | | | | | | | | | | | | | | | | | | | | | | | | | | | | | | | | | | | | | | | | | | | | | | | | | | | | | | | | | | | | | | | | | | | | | | | | | | | | | | | | | | | | | | | | | | | | | | | | | | | | | | | | | | | | | | | | | | | | | | | | | | | | | | | | | | | | | | | | | | | | | | | | | | | | | | | | | | | | | | | | | | | | | | | | | | | | | | | | | | | | | | | | | | | | | | | | | | | | | | | | | | | | | | | | | | | | | | | | | | | | | | | | | | | | | | | | | | | | | | | | | | | | | | | | | | | | | | | | | | | | | | | | | | | | | | | | | | | | | | | | | | | | | | | | | | | | | | | | | | | | | | | | | | | | | | | | | | | | | | | | | | | | | | | | | | | | | | | | | | | | | | | | | | | | | | | | | | | | | | | | | | | | | | | | | | | | | | | | | | | | | | | | | | | | | | | | | | | | | | | | | | | | | | | | | | | | | | | | | | | | | | | | | | | | | | | | | | | | | | | | | | | | | | | | | | | | | | | | | | | | | | | | | | | | | | | | | | | | | | | | | | | | | | | | | | | | | | | | | | | | | | | | | | | | | | | | | | | | | | | | | | | | | | | | | | | | | | | | | | | | | | | | | | | | | | | | | | | | | | | | | | | | | | | | | | | | | | | | | | | | | | | | | | | | | | | | | | | | | | | | | | | | | | | | | | | | | | | | | | | | | | | | | | | | | | | | | | | | | | | | | | | | | | | | | | | | | | | | | | | | | | | | | | | | | | | | | | | | | | | | | | | | | | | | | | | | | | | | | | | | | | | | | | | | | | | | | | | | | | | | | | | | | | | | | | | | | | | | | | | | | | | | | | | | | | | | | | | | | | | | | | | | | | | | | | | | | | | | | | | | | | | | | | | | | | | | | | | | | | | | | | | | | | | | | | | | | | | | | | | | | | | | | | | | | | | | | | | | | | | | | | | | | | | | | | | | | | | | | | | | | | | | | | | | | | | | | | | | | | | | | | | | | | | | | | | | | | | | | | | | | | | | | | | | | | | | | | | | | | | | | | | | | | | | | | | | | | | | | | | | | | | | | | | | | | | | | | | | | | | | | | | | | | | | | | | | | | | | | | | | | | | | | | | | | | | | | | | | | | | | | | | | | | | | | | | | | | |

1. All dates are estimates.
 2. All dates are subject to change.
 3. All dates are subject to weather.
 4. All dates are subject to availability of resources.

1. All dates are estimates.
 2. All dates are subject to change.
 3. All dates are subject to weather.
 4. All dates are subject to availability of resources.