

# Log of Boring No. BRC-SB-12-A

## BMI Site - Hydrogeologic Characterization

### Henderson, Nevada



**Drilling Method:** Mud Rotary  
**Drilling Equipment:** Gefco 15K  
**Drilling Contractor:** Water Development Corporation  
**Driller:** Juan Aguilar

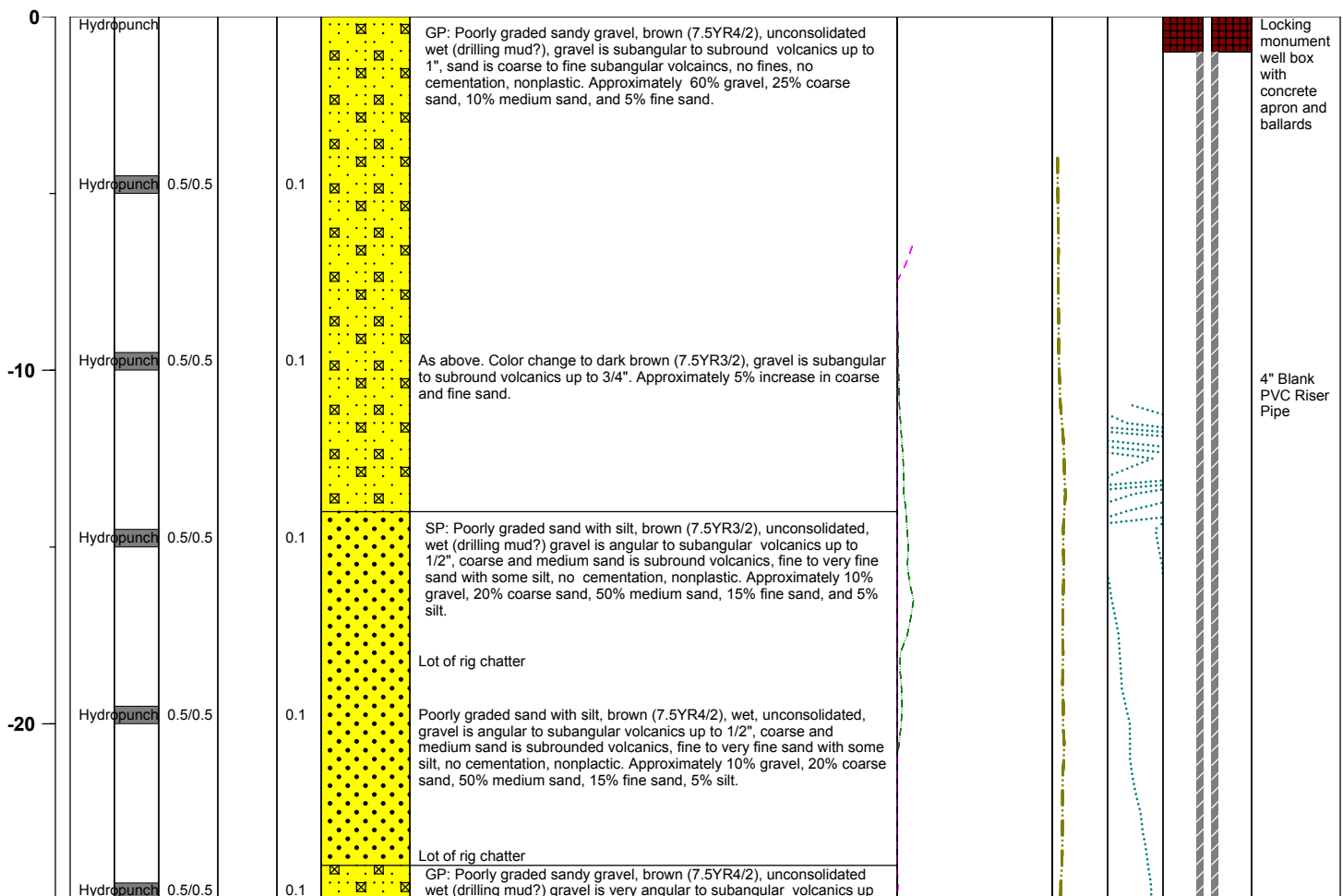
**Borehole Total Depth:** 400 ft bgs  
**Borehole Diameter:** 10 in  
**Boring Location:** Location 12 (Well ID: MCF-12A)  
**Depth to Water (ft. bgs):** NA

**Sample Type:** Hydropunch  
**Sample Interval** 5 ft

**Logged By:** Dave Kremer  
**Date Started:** 3/31/04  
**Date Completed:** 4/1/04

Monitoring Well Construction			
<b>Type of Surface Seal:</b>	Bentonite-Grout	<b>Screen Slot Size:</b>	0.010 in
<b>Blank Casing Type/Size:</b>	4" Sch 80 PVC	<b>Top of Screen (ft. bgs):</b>	349.5 ft bgs
<b>Screen Type/Size:</b>	4" Sch 80 PVC	<b>Bottom of Screen (ft. bgs):</b>	369.5ft bgs
<b>Transition Sand Type:</b>	#1C	<b>Type of Sand Pack:</b>	#10 x 20

Depth Elevation (BGS)	Sample Type	Sample Interval	Sample Recovery	Sample Retained for Analysis	PID	Lithology	Soil Description	Geophysical Data				Well Construction	
								E-Log			Caliper Log (inch)		Guard Log (OHM.M)
								16" (OHM)	64" (OHM)	S. PT. (OHM)			



**Project No.** 3850360

**Log of Boring:** BRC-SB-12-A



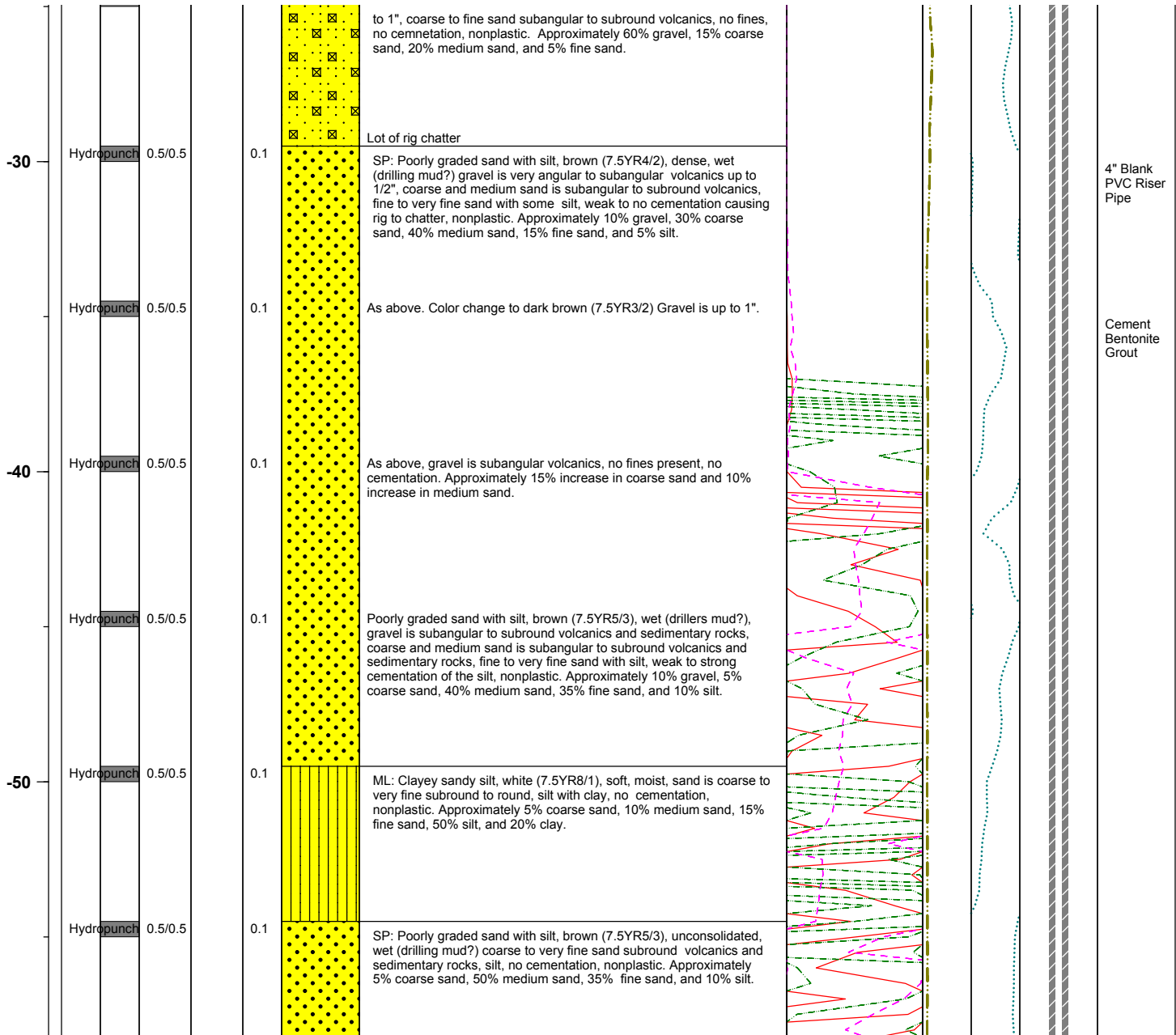
# BMI Site - Hydrogeologic Characterization

Henderson, Nevada



Log of Boring No. BRC-SB-12-A

Depth Elevation (BGS)	Sample Type	Sample Interval	Sample Recovery	Sample Retained for Analysis	PID	Lithology	Soil Description	Geophysical Data				Well Construction	
								E-Log			Caliper Log (inch)		Guard Log (OHM.M)
								16" (OHM)	64" (OHM)	S. PT. (OHM)			



Project No. 3850360

Log of Boring: BRC-SB-12-A



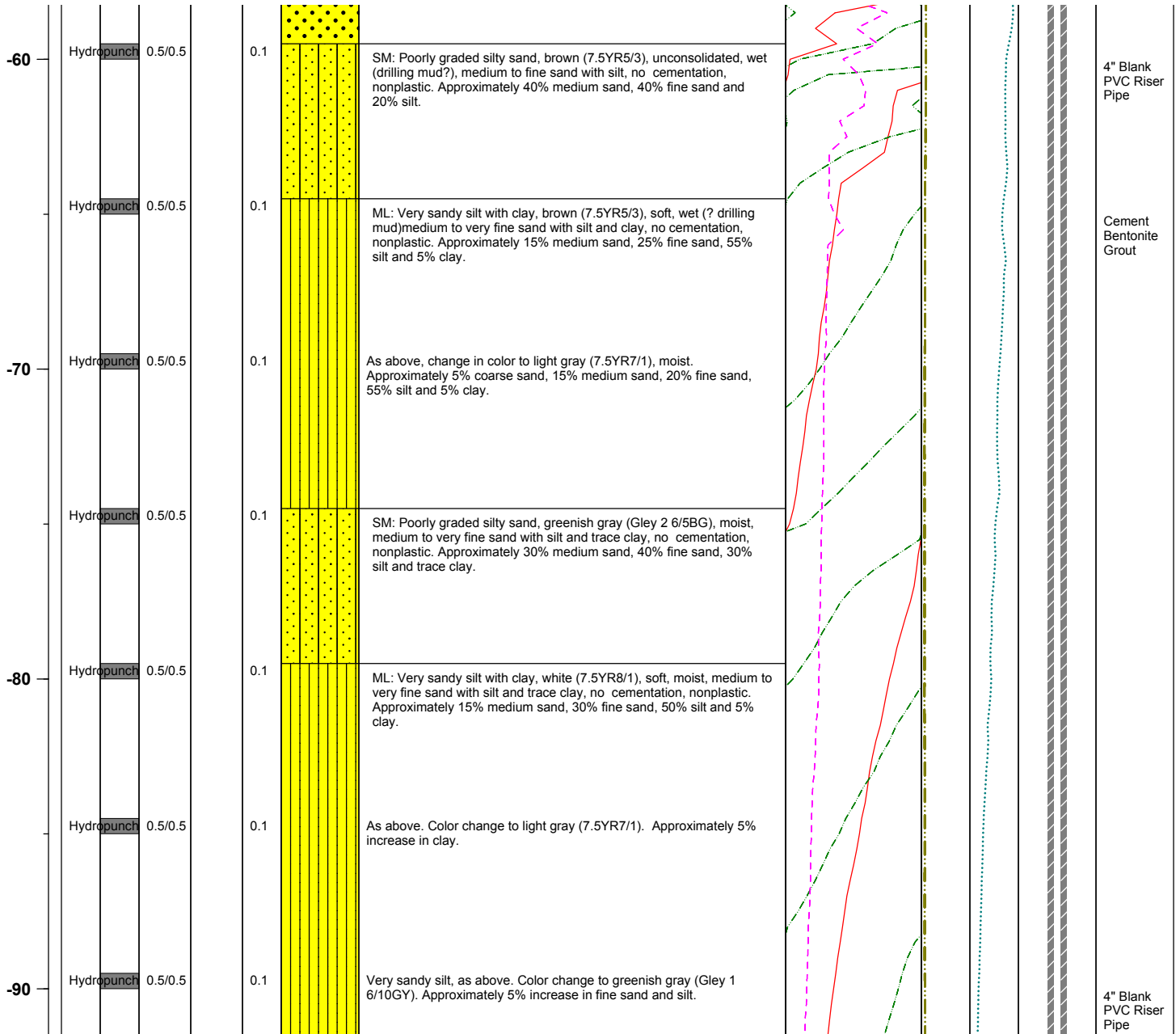
# BMI Site - Hydrogeologic Characterization

Henderson, Nevada



## Log of Boring No. BRC-SB-12-A

Depth Elevation (BGS)	Sample Type	Sample Interval	Sample Recovery	Sample Retained for Analysis	PID	Lithology	Soil Description	Geophysical Data			Well Construction
								E-Log			
								16" (OHM) <div><div></div></div>	64" (OHM) <div><div></div></div>	S. PT. (OHM) <div><div></div></div>	



Project No. 3850360

Log of Boring: BRC-SB-12-A



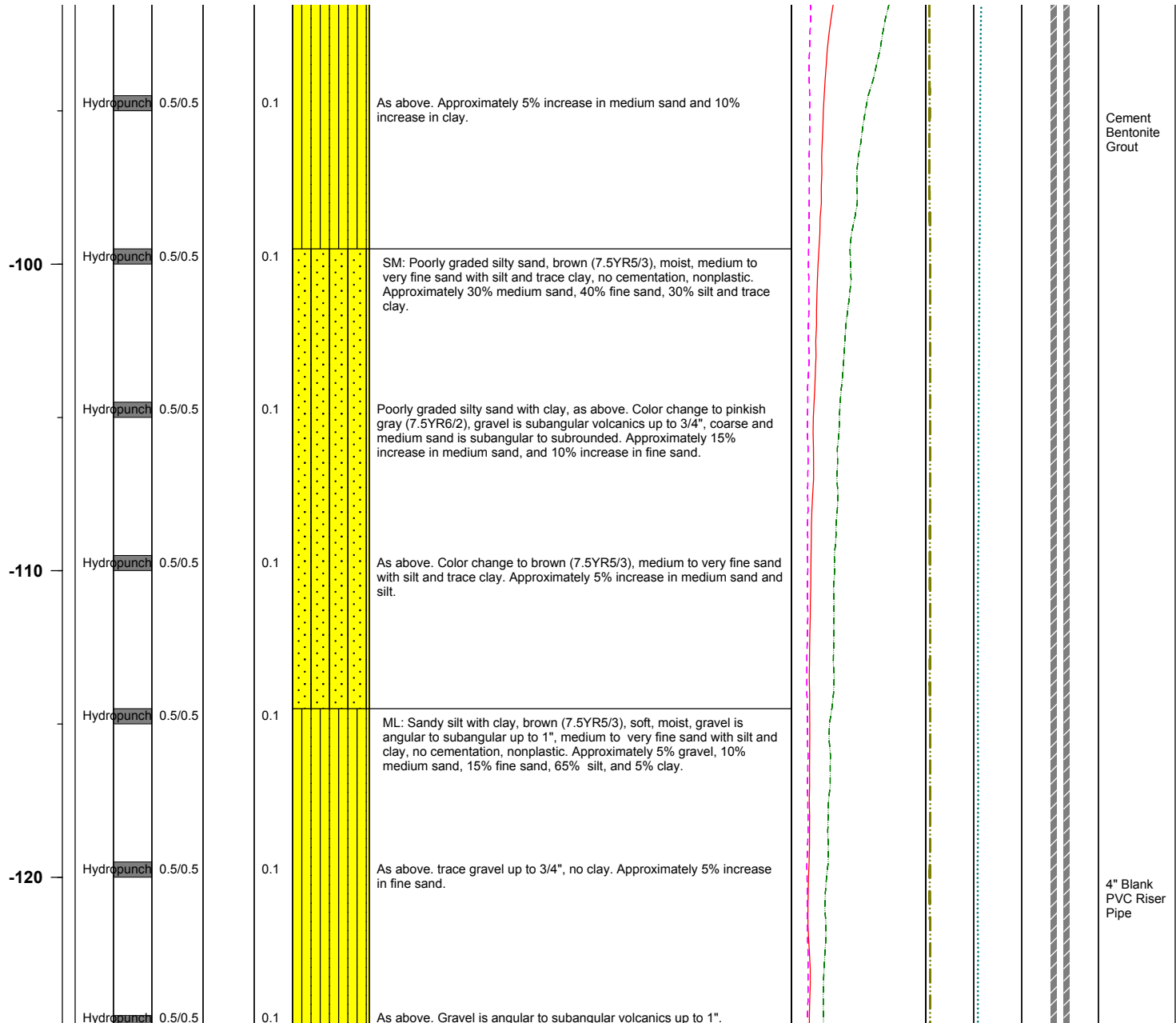
# BMI Site - Hydrogeologic Characterization

Henderson, Nevada



Log of Boring No. BRC-SB-12-A

Depth Elevation (BGS)	Sample Type	Sample Interval	Sample Recovery	Sample Retained for Analysis	PID	Lithology	Soil Description	Geophysical Data			Well Construction	
								E-Log		Caliper Log (inch)		Guard Log (OHM.M)
								16" (OHM)	64" (OHM)			



Project No. 3850360

Log of Boring: BRC-SB-12-A



# BMI Site - Hydrogeologic Characterization

Henderson, Nevada



Log of Boring No. BRC-SB-12-A

Depth Elevation (BGS)	Sample Type	Sample Interval	Sample Recovery	Sample Retained for Analysis	PID	Lithology	Soil Description	Geophysical Data					Well Construction	
								E-Log			Caliper Log (inch)	Guard Log (OHM.M)		
								16" (OHM)	64" (OHM)	S. PT. (OHM)				
130	Hydropunch	0.5/0.5			0.1		Sandy silt, pinkish gray (7.5YR6/2), medium stiff, moist, gravel is angular to subangular volcanics up to 1" medium to very fine sand with silt, no cementation, nonplastic. Approximately 5% gravel, 10% medium sand, 20% fine sand and 65% silt.							
	Hydropunch	0.5/0.5			0.1		Very sandy silt with clay, brown (7.5YR5/3), medium stiff, moist, trace gravel subangular to subround up to 1/2", coarse to very fine sand with silt and clay, no cementation, nonplastic. Approximately trace gravel, 5% coarse sand, 15% medium sand, 20% fine sand, 50% silt, and 10% clay.							
140	Hydropunch	0.5/0.5			0.1		Gravelly clayey silt with sand, as above. Gravel is angular to subround volcanics up to 1", trace medium sand. Approximately 30% increase in gravel and 10% increase in clay.							
	Hydropunch	0.5/0.5			0.1		As above. Approximately 10% increase in medium sand, and 5% increase in silt.							
150	Hydropunch	0.5/0.5			0.1		As above. Approximately 15% increase in fine sand, and 5% increase in silt.							
	Hydropunch	0.5/0.5			0.1		Clayey silt with sand, as above. No gravel. Aproximately 10% increase in silt and clay.							
														Cement Bentonite Grout
														4" Blank PVC Riser Pipe

Project No. 3850360

Log of Boring: BRC-SB-12-A



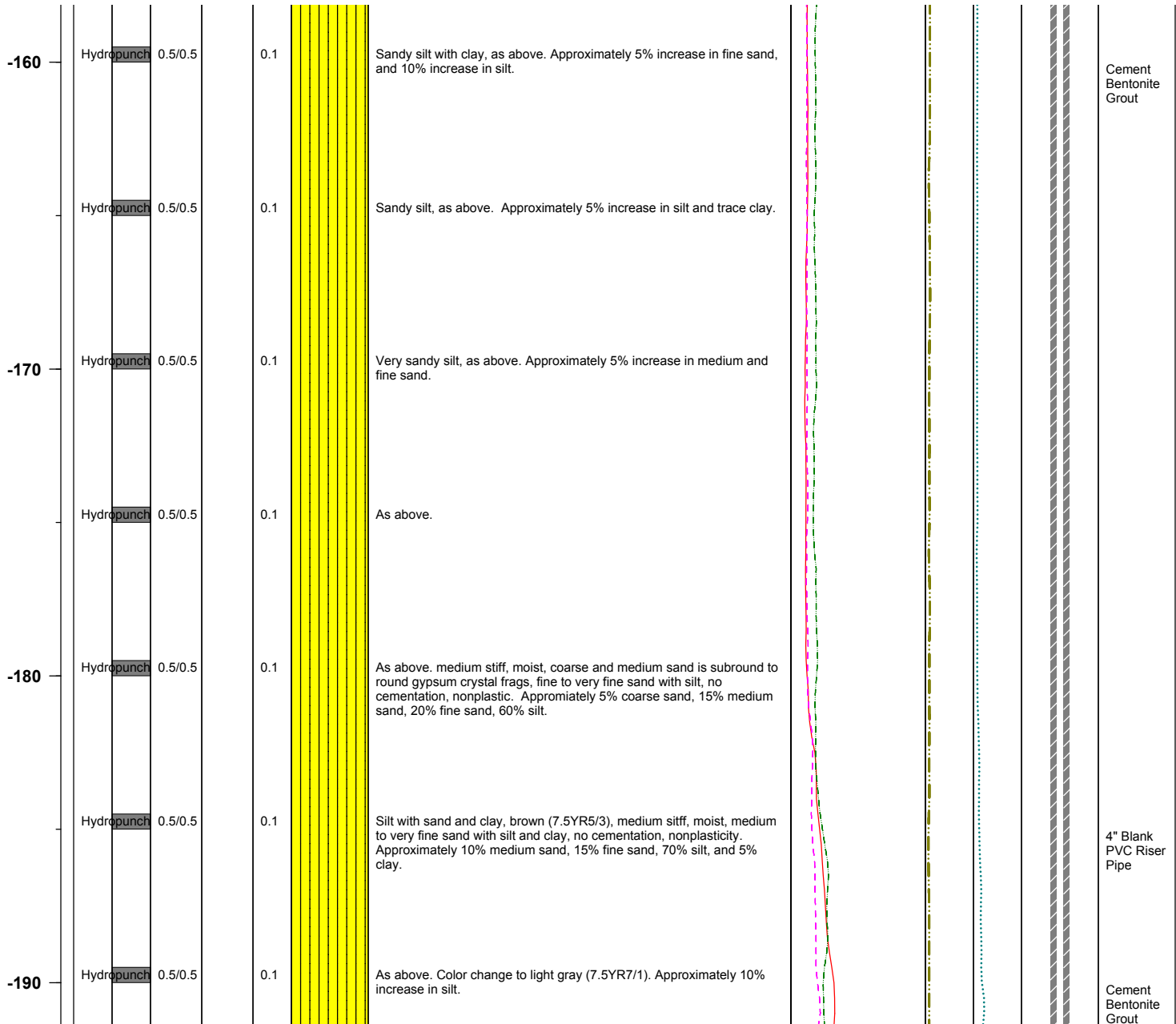
# BMI Site - Hydrogeologic Characterization

Henderson, Nevada



Log of Boring No. BRC-SB-12-A

Depth Elevation (BGS)	Sample Type	Sample Interval	Sample Recovery	Sample Retained for Analysis	PID	Lithology	Soil Description	Geophysical Data				Well Construction	
								E-Log			Caliper Log (inch)		Guard Log (OHM.M)
								16" (OHM)	64" (OHM)	S. PT. (OHM)			



Project No. 3850360

Log of Boring: BRC-SB-12-A



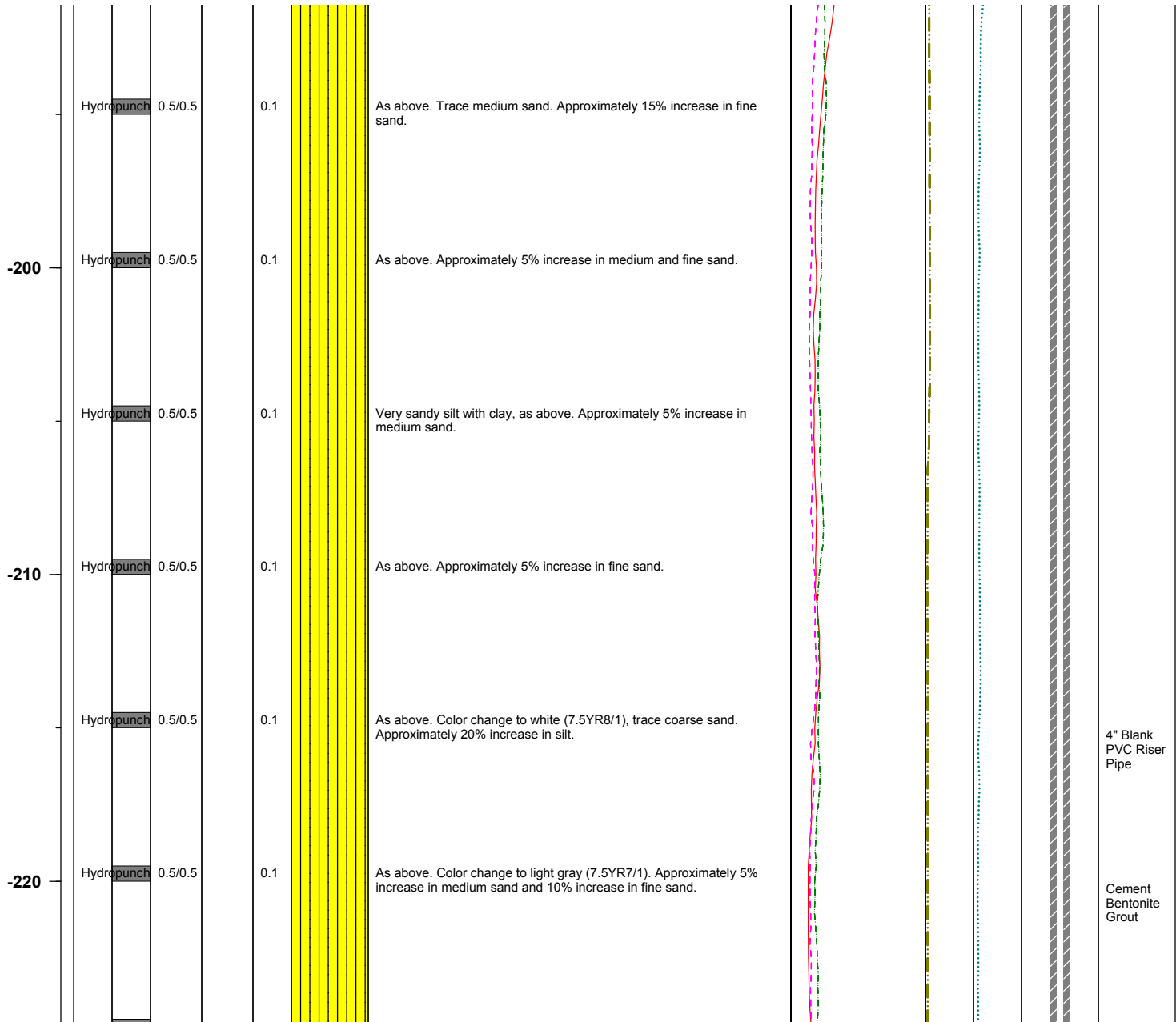
# BMI Site - Hydrogeologic Characterization

Henderson, Nevada



Log of Boring No. BRC-SB-12-A

Depth Elevation (BGS)	Sample Type	Sample Interval	Sample Recovery	Sample Retained for Analysis	PID	Lithology	Soil Description	Geophysical Data				Well Construction	
								E-Log			Caliper Log (inch)		Guard Log (OHM.M)
								16" (OHM)	64" (OHM)	S. PT. (OHM)			



Project No. 3850360

Log of Boring: BRC-SB-12-A



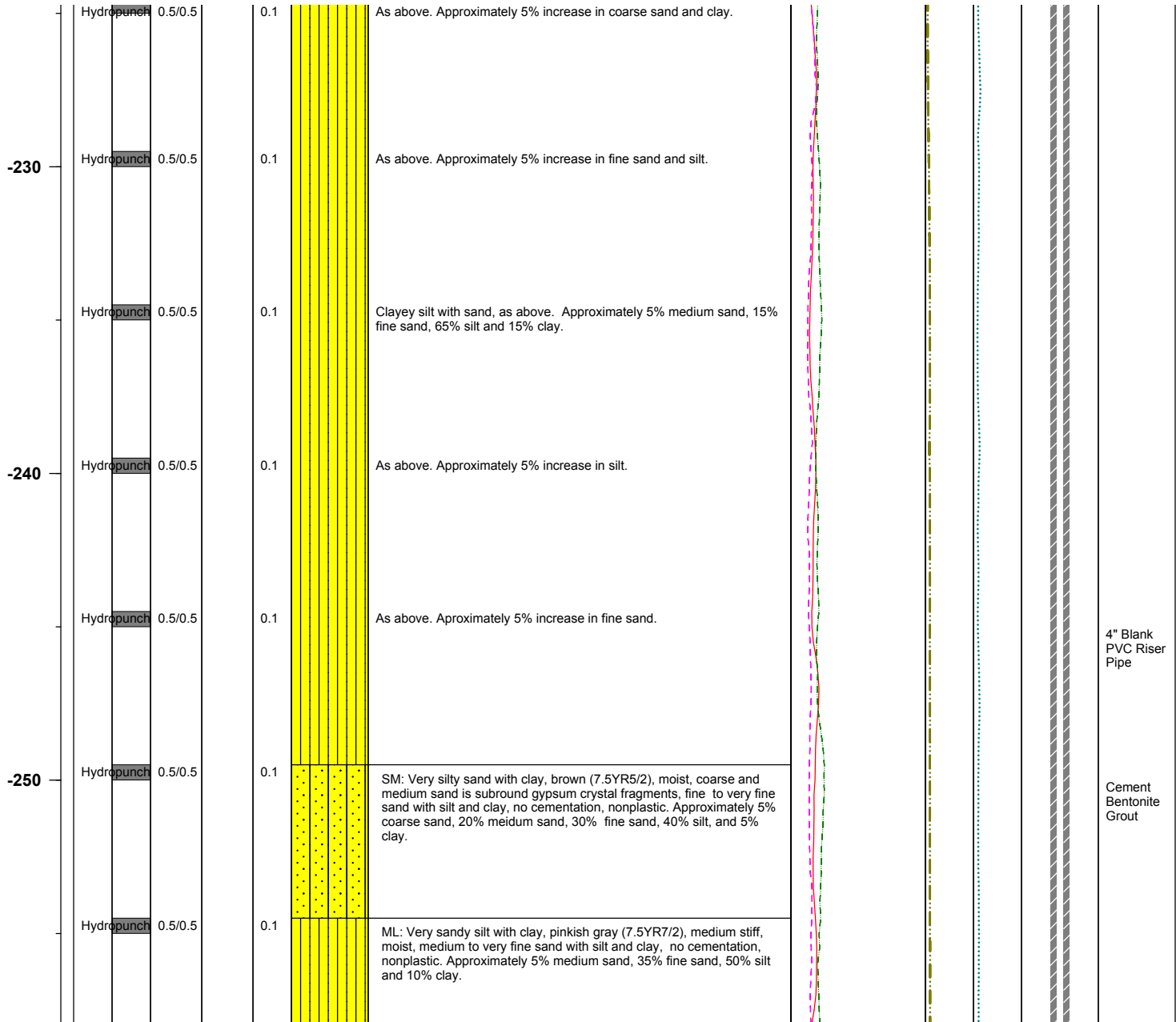
# BMI Site - Hydrogeologic Characterization

Henderson, Nevada



Log of Boring No. BRC-SB-12-A

Depth Elevation (BGS)	Sample Type	Sample Interval	Sample Recovery	Sample Retained for Analysis	PID	Lithology	Soil Description	Geophysical Data				Well Construction	
								E-Log			Caliper Log (inch)		Guard Log (OHM.M)
								16" (OHM)	64" (OHM)	S. PT. (OHM)			



Project No. 3850360

Log of Boring: BRC-SB-12-A





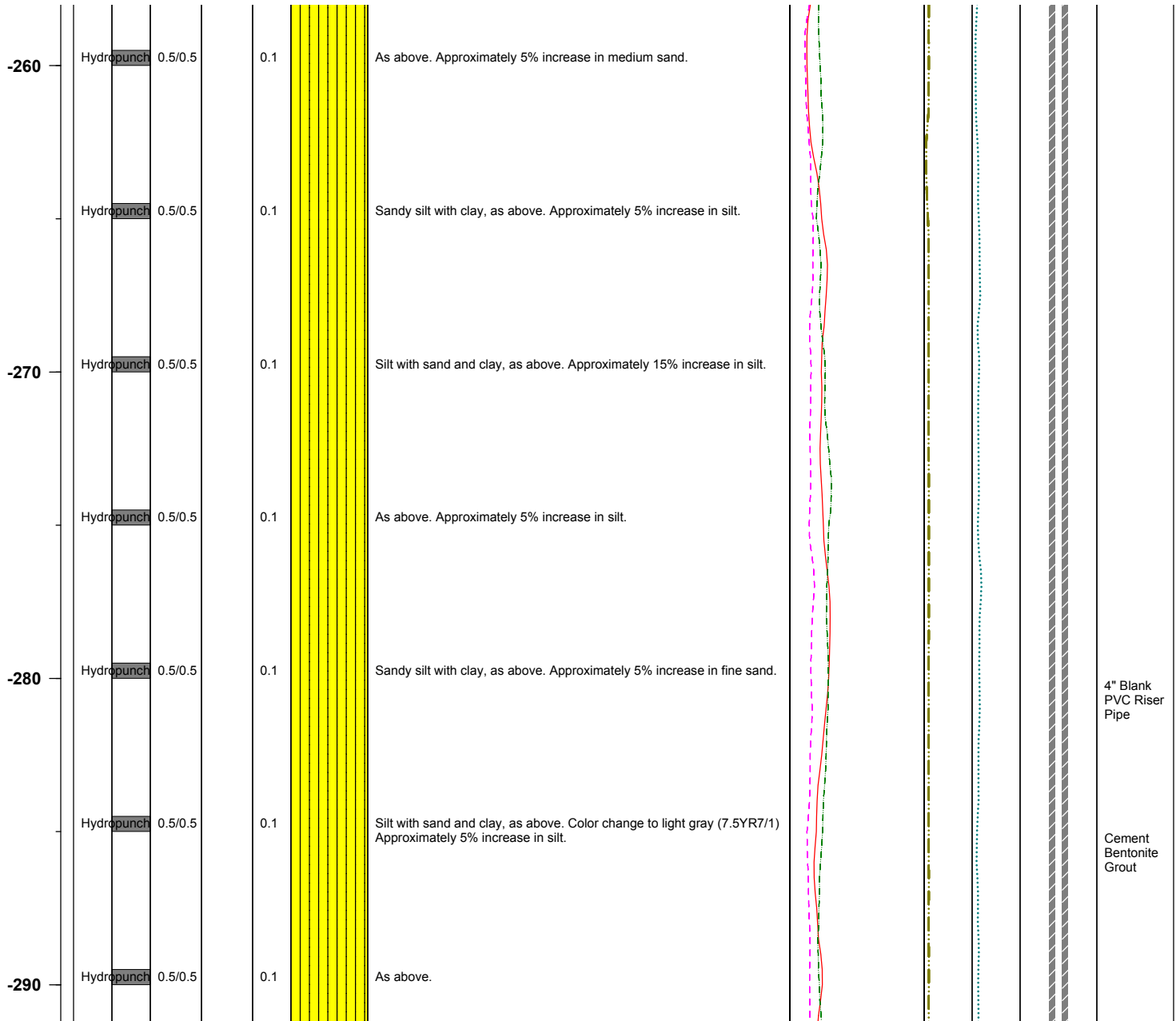
# BMI Site - Hydrogeologic Characterization

Henderson, Nevada



## Log of Boring No. BRC-SB-12-A

Depth Elevation (BGS)	Sample Type	Sample Interval	Sample Recovery	Sample Retained for Analysis	PID	Lithology	Soil Description	Geophysical Data				Well Construction	
								E-Log			Caliper Log (inch)		Guard Log (OHM.M)
								16" (OHM)	64" (OHM)	S. PT. (OHM)			



Project No. 3850360

Log of Boring: BRC-SB-12-A



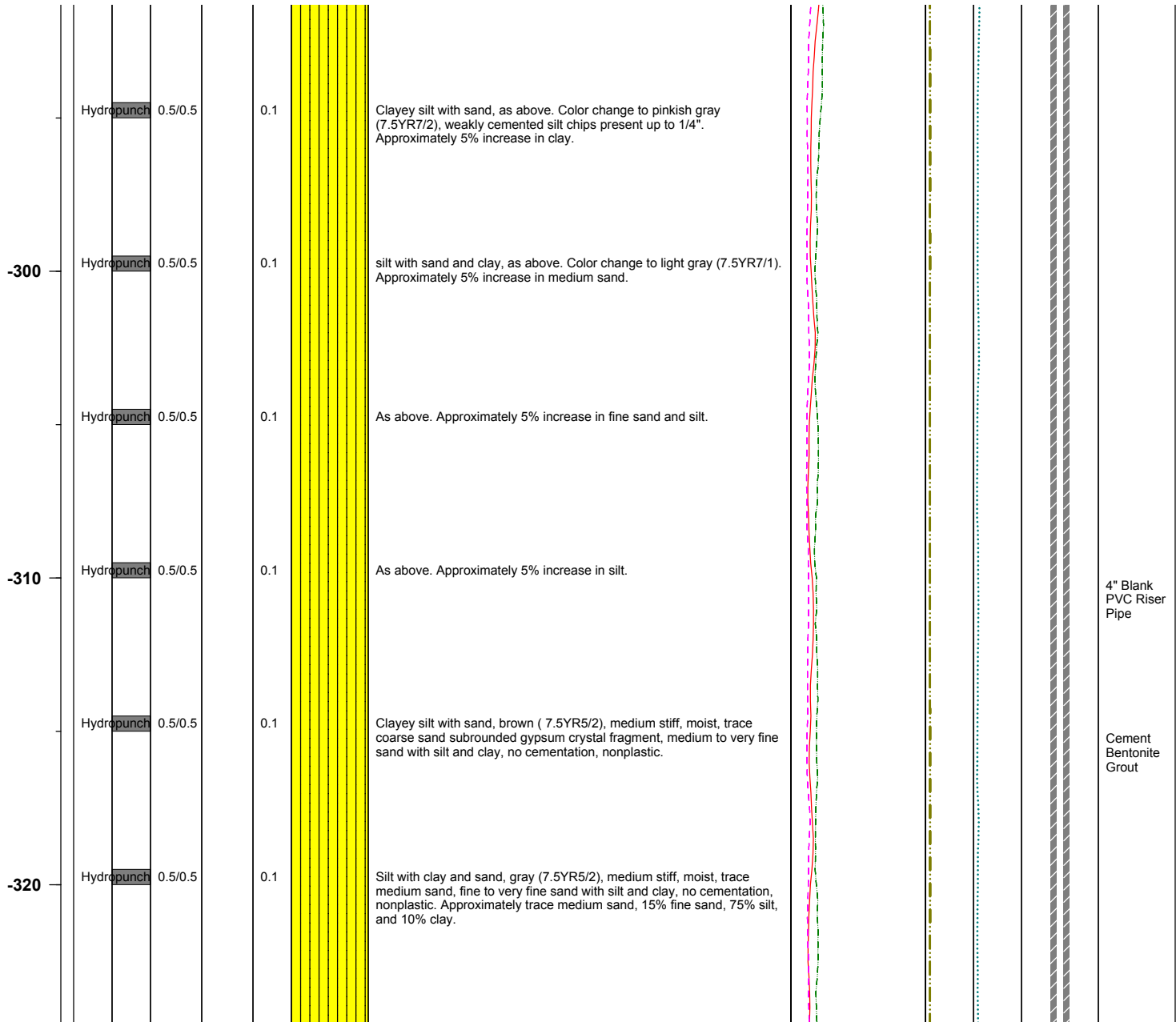
# BMI Site - Hydrogeologic Characterization

Henderson, Nevada



Log of Boring No. BRC-SB-12-A

Depth Elevation (BGS)	Sample Type	Sample Interval	Sample Recovery	Sample Retained for Analysis	PID	Lithology	Soil Description	Geophysical Data				Well Construction	
								E-Log			Caliper Log (inch)		Guard Log (OHM.M)
								16" (OHM)	64" (OHM)	S. PT. (OHM)			



Project No. 3850360

Log of Boring: BRC-SB-12-A



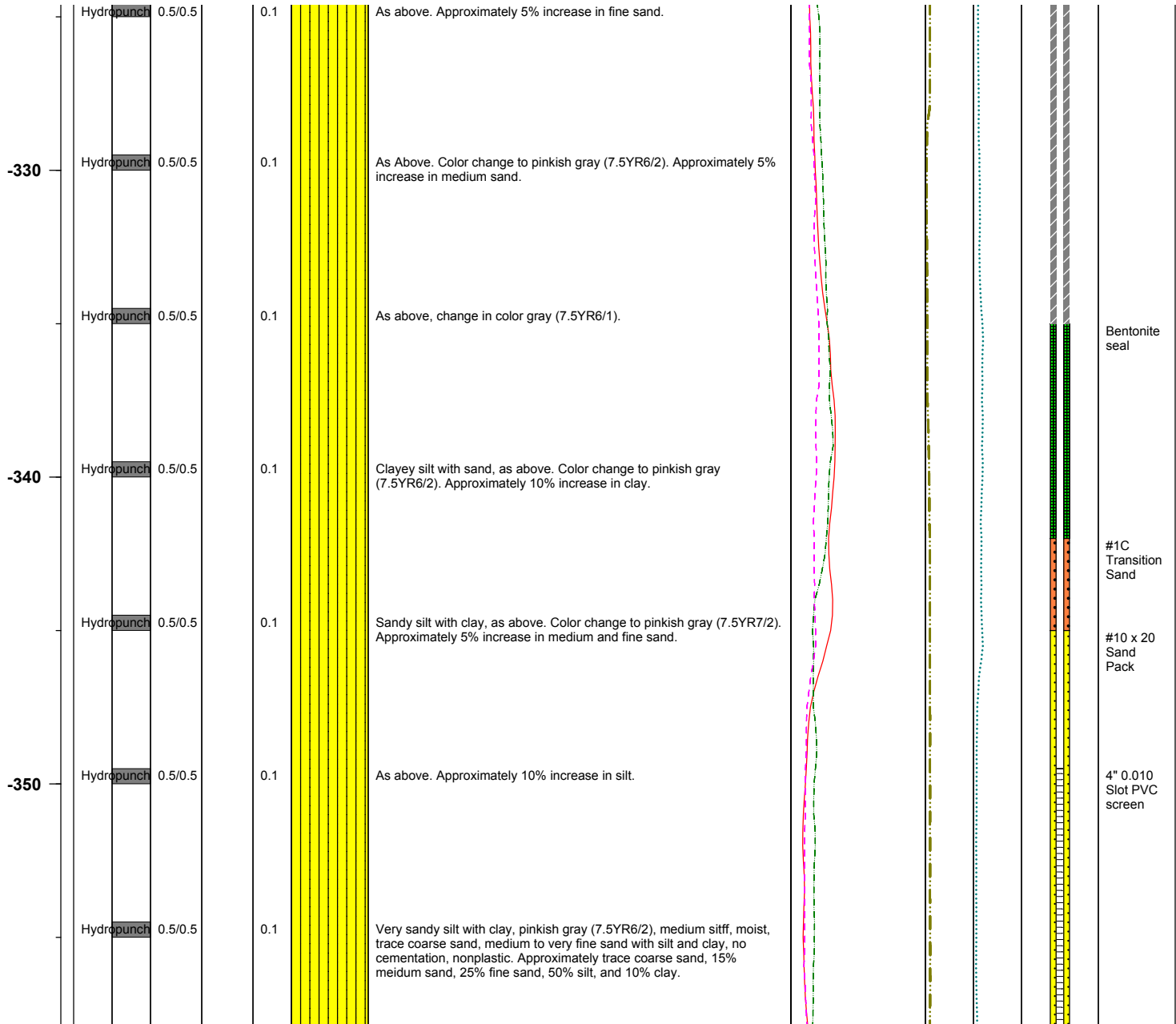
# BMI Site - Hydrogeologic Characterization

Henderson, Nevada



Log of Boring No. BRC-SB-12-A

Depth Elevation (BGS)	Sample Type	Sample Interval	Sample Recovery	Sample Retained for Analysis	PID	Lithology	Soil Description	Geophysical Data				Well Construction	
								E-Log			Caliper Log (inch)		Guard Log (OHM.M)
								16" (OHM)	64" (OHM)	S. PT. (OHM)			



Project No. 3850360

Log of Boring: BRC-SB-12-A



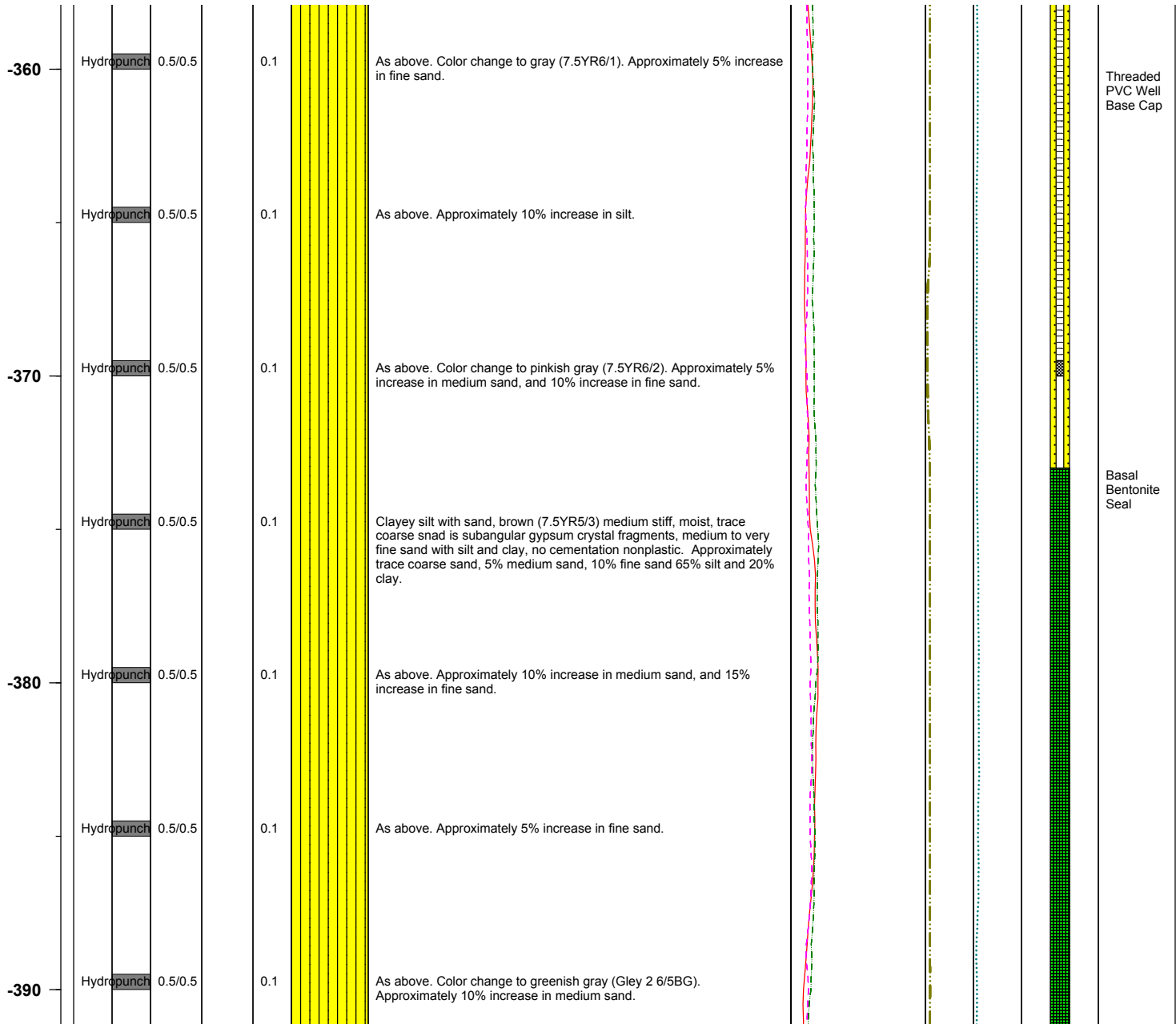
# BMI Site - Hydrogeologic Characterization

Henderson, Nevada



Log of Boring No. BRC-SB-12-A

Depth Elevation (BGS)	Sample Type	Sample Interval	Sample Recovery	Sample Retained for Analysis	PID	Lithology	Soil Description	Geophysical Data				Well Construction	
								E-Log			Caliper Log (inch)		Guard Log (OHM.M)
								16" (OHM)	64" (OHM)	S. PT. (OHM)			



Project No. 3850360

Log of Boring: BRC-SB-12-A



# BMI Site - Hydrogeologic Characterization

Henderson, Nevada



Log of Boring No. BRC-SB-12-A

Depth Elevation (BGS)	Sample Type	Sample Interval	Sample Recovery	Sample Retained for Analysis	PID	Lithology	Soil Description	Geophysical Data					Well Construction
								E-Log			Caliper Log (inch)	Guard Log (OHM.M)	
								16" (OHM)	64" (OHM)	S. PT. (OHM)			

-400	Hydropunch	0.5/0.5	0.1	Very sandy silt with clay, bluish gray (Gley 2 5/5B), medium stiff, moist, trace gravel and coarse sand is subangular gypsum crystal fragments up to 3/8", medium to very fine sand with silt and clay, no cementation, nonplastic, slight odor of decay. Approximately trace gravel, trace coarse sand, 15% medium sand, 25% fine sand, 50% silt and 10% clay.									
	Hydropunch	0.5/0.5	0.1	As above. Approximately 5% increase in coarse and medium sand.									

Project No. 3850360

Log of Boring: BRC-SB-12-A

