

Log of Boring No. BRC-SB-21-A

BMI Site - Hydrogeologic Characterization

Henderson, Nevada



Drilling Method: Hollow Stem Auger
Drilling Equipment: CME-95/Hollow Stem Auger
Drilling Contractor: Water Development Corporation
Driller: George Guzman

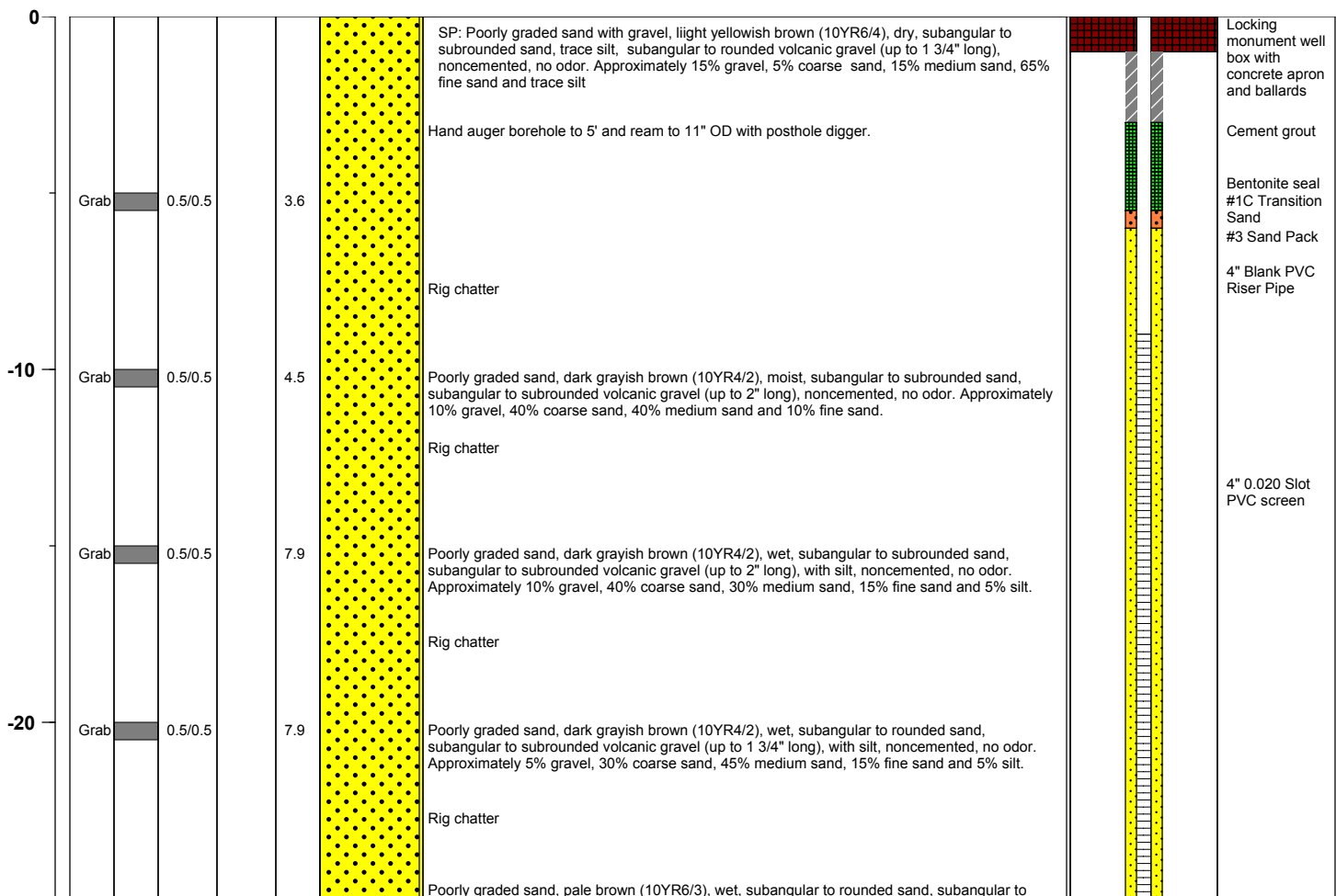
Borehole Total Depth: 45 ft bgs
Borehole Diameter: 11 in
Boring Location: Location 21 (WellID: AA-21)
Depth to Water (ft. bgs): 8 ft bgs

Sample Type: Cuttings grab
Sample Interval: Varied

Logged By: Jennifer Wiley
Date Started: 3/30/04
Date Completed: 4/1/04

Monitoring Well Construction			
Type of Surface Seal:	Bentonite-Cement	Screen Slot Size:	0.020 in
Blank Casing Type/Size:	4" Sch 80 PVC	Top of Screen (ft. bgs):	9 ft bgs
Screen Type/Size:	4" Sch 80 PVC	Bottom of Screen (ft. bgs):	39 ft bgs
Transition Sand Type:	#1C	Type of Sand Pack:	#3

Depth Elevation (MSLD)	Sample Type	Sample Interval	Sample Recovery (feet)	Sample Retained for Analysis	PID	Lithology	Soil Description	Well Construction
---------------------------	-------------	-----------------	---------------------------	---------------------------------	-----	-----------	------------------	-------------------



Project No. 3850360

Log of Boring: BRC-SB-21-A



BMI Site - Hydrogeologic Characterization

Henderson, Nevada



Log of Boring No. BRC-SB-21-A

Depth Elevation (MSLD)	Sample Type	Sample Interval	Sample Recovery (feet)	Sample Retained for Analysis	PID	Lithology	Soil Description	Well Construction
---------------------------	-------------	-----------------	---------------------------	---------------------------------	-----	-----------	------------------	-------------------

	Grab	0.5/0.5			6.6		subrounded volcanic gravel (up to 3/4" long) with silt, noncemented, no odor. Approximately 5% gravel, 15% coarse sand, 65% medium sand, 10% fine sand and 5% silt. Slow drilling, rig chatter @ 26' - 28' difficult drilling	
-30	Grab	0.5/0.5			0.1		Stop for a day @ 30' Slow drilling, rig chatter Poorly graded sand, brown (10YR5/3), wet, subangular to subrounded sand, angular to subrounded volcanic gravel (up to 1/2" long), with silt, noncemented, no odor. Approximately trace gravel, 15% coarse sand, 55% medium sand, 20% fine sand and 10% silt. Slow drilling, rig chatter No solid cuttings due to rig on cobbles - rig bouncing/chatter reaming hole and water coming to surface. Slow drilling, heavy rig chatter	#3 Sand Pack 4" 0.020 Slot PVC screen
-40	Grab	0.5/0.5			4.3		ML: Silt with clay, yellowish brown (10YR5/4), stiff, moist, subangular to subrounded sand, noncemented, no odor, nonplastic silt. Approximately trace medium sand, 10% fine sand, 75% silt and 15% clay. At 40', rig chatter stopped and easier drilling. No cutting at ~40' used from auger flights to log due to mixing with gravels on exiting hole. Slow drilling Cuttings grab off of auger flights after pulling auger Cuttings grab off of auger flights at bit.	Threaded PVC Well Base Cap
	Grab	0.5/0.5			4.1		Silt with clay, light gray (5Y7/2), stiff, moist, subangular to subrounded sand, locally partly indurated, no odor, nonplastic silt. Approximately trace medium sand, 10% fine sand, 75% silt and 15% clay.	Cement-Grout Backfill

Project No. 3850360

Log of Boring: BRC-SB-21-A



Page 2 of 2