

Log of Boring No. BRC-SB-07-B

BMI Site - Hydrogeologic Characterization

Henderson, Nevada



Drilling Method: Rotary Sonic
Drilling Equipment: Roto Sonic
Drilling Contractor: Prosonic Corporation
Driller: Gerald Sealey

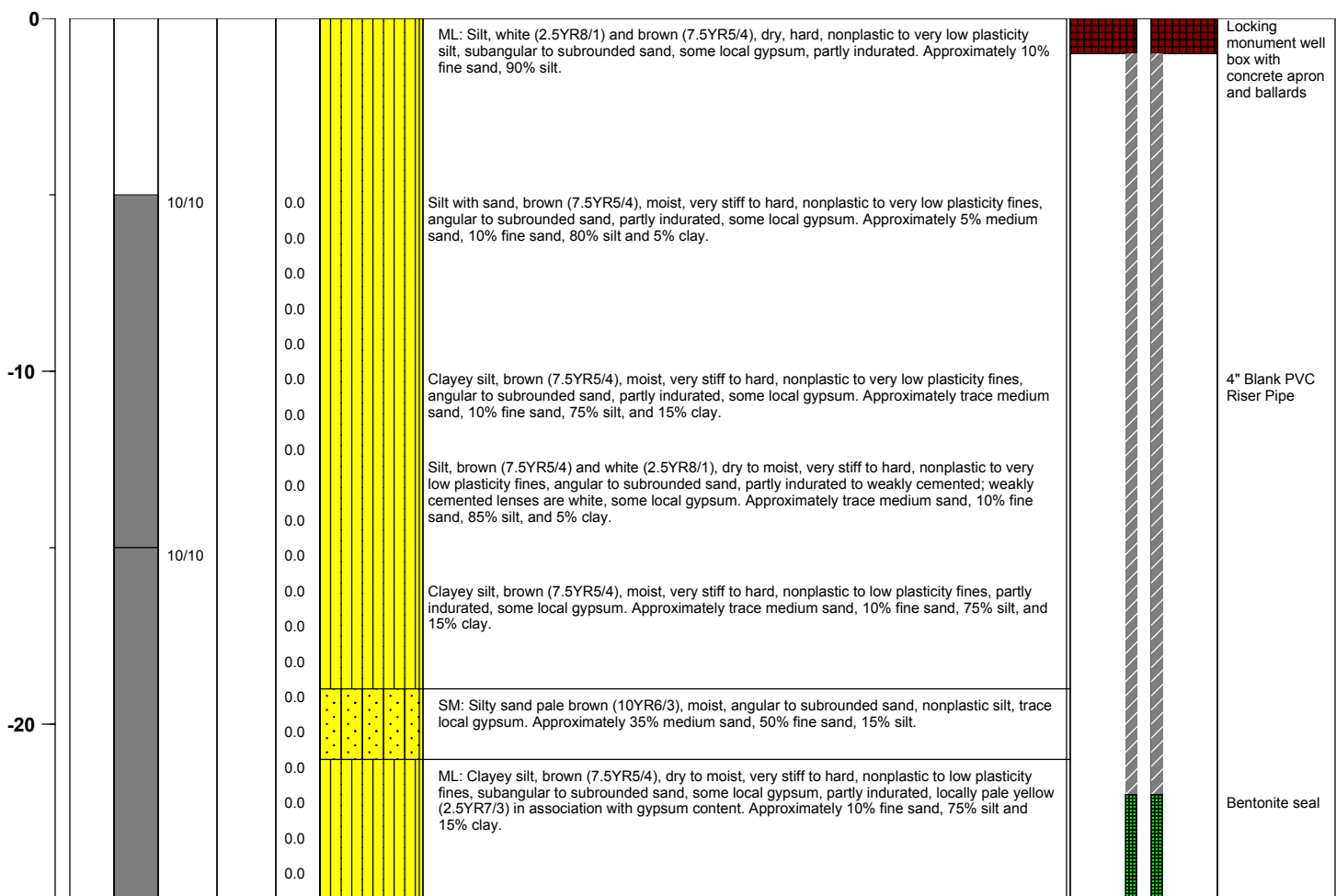
Borehole Total Depth: 255 ft bgs
Borehole Diameter: 4.5 in to 0-65 ft bgs, 8.5 in to 65-255 ft bgs
Boring Location: Location 7 (Well ID: MCF-07)
Depth to Water (ft. bgs): 45 ft bgs

Sample Type: Grab
Sample Interval: Various

Logged By: Adam Norris
Date Started: 4/21/04
Date Completed: 4/23/04

Monitoring Well Construction			
Type of Surface Seal:	Bentonite-Cement	Screen Slot Size:	0.010 in
Blank Casing Type/Size:	4" Sch 80 PVC	Top of Screen (ft. bgs):	30 ft bgs
Screen Type/Size:	4" Sch 80 PVC	Bottom of Screen (ft. bgs):	50 ft bgs
Transition Sand Type:	NA	Type of Sand Pack:	#2 x 12

Depth Elevation (MSLD)	Sample Type	Sample Interval	Sample Recovery (feet)	Sample Retained for Analysis	PID	Lithology	Soil Description	Well Construction
---------------------------	-------------	-----------------	---------------------------	---------------------------------	-----	-----------	------------------	-------------------



Project No. 3850360

Log of Boring: BRC-SB-07-B



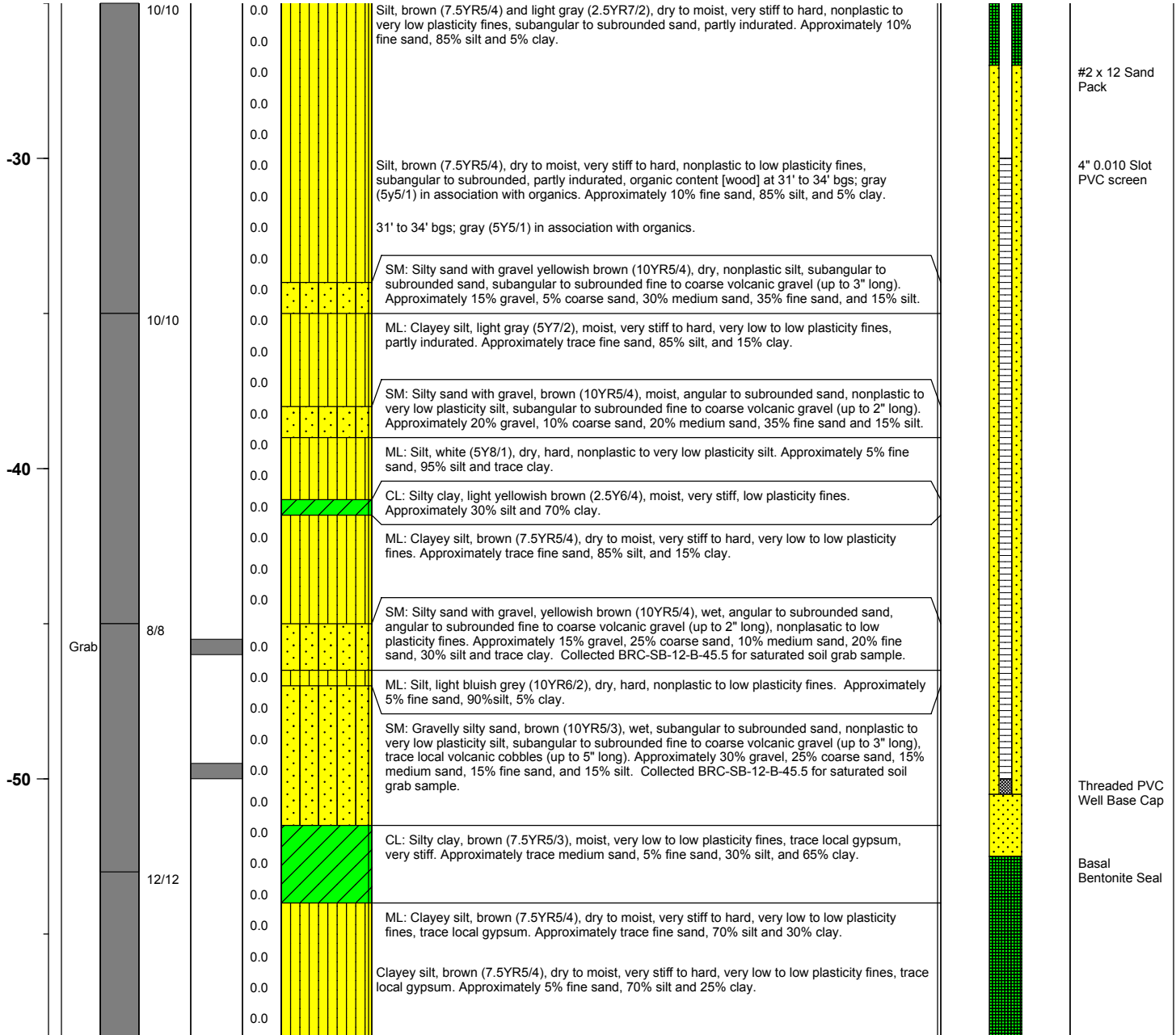
BMI Site - Hydrogeologic Characterization

Henderson, Nevada



Log of Boring No. BRC-SB-07-B

Depth Elevation (MSLD)	Sample Type	Sample Interval	Sample Recovery (feet)	Sample Retained for Analysis	PID	Lithology	Soil Description	Well Construction
---------------------------	-------------	-----------------	---------------------------	---------------------------------	-----	-----------	------------------	-------------------



Project No. 3850360

Log of Boring: BRC-SB-07-B



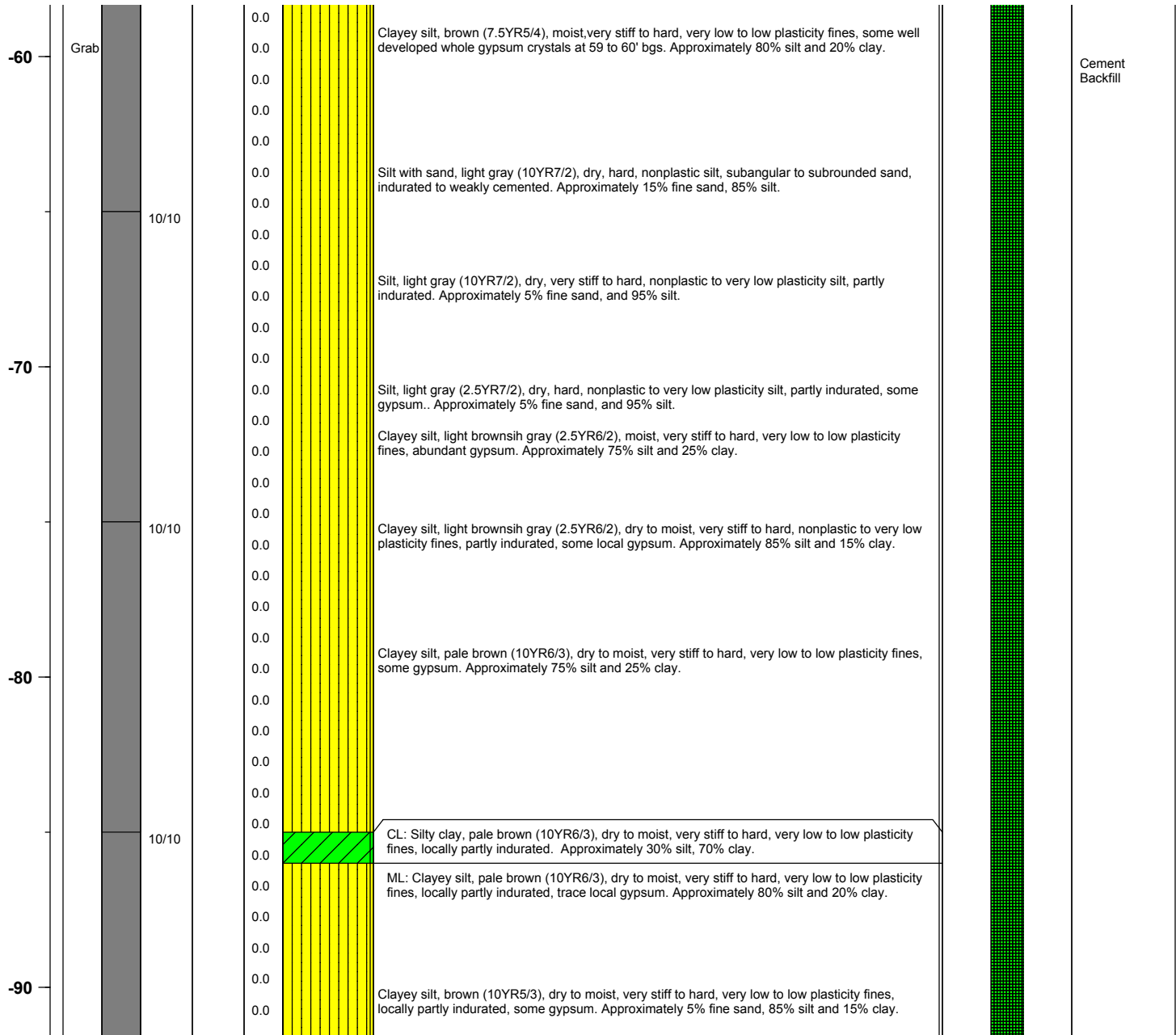
BMI Site - Hydrogeologic Characterization

Henderson, Nevada



Log of Boring No. BRC-SB-07-B

Depth Elevation (MSLD)	Sample Type	Sample Interval	Sample Recovery (feet)	Sample Retained for Analysis	PID	Lithology	Soil Description	Well Construction
---------------------------	-------------	-----------------	---------------------------	---------------------------------	-----	-----------	------------------	-------------------



Project No. 3850360

Log of Boring: BRC-SB-07-B



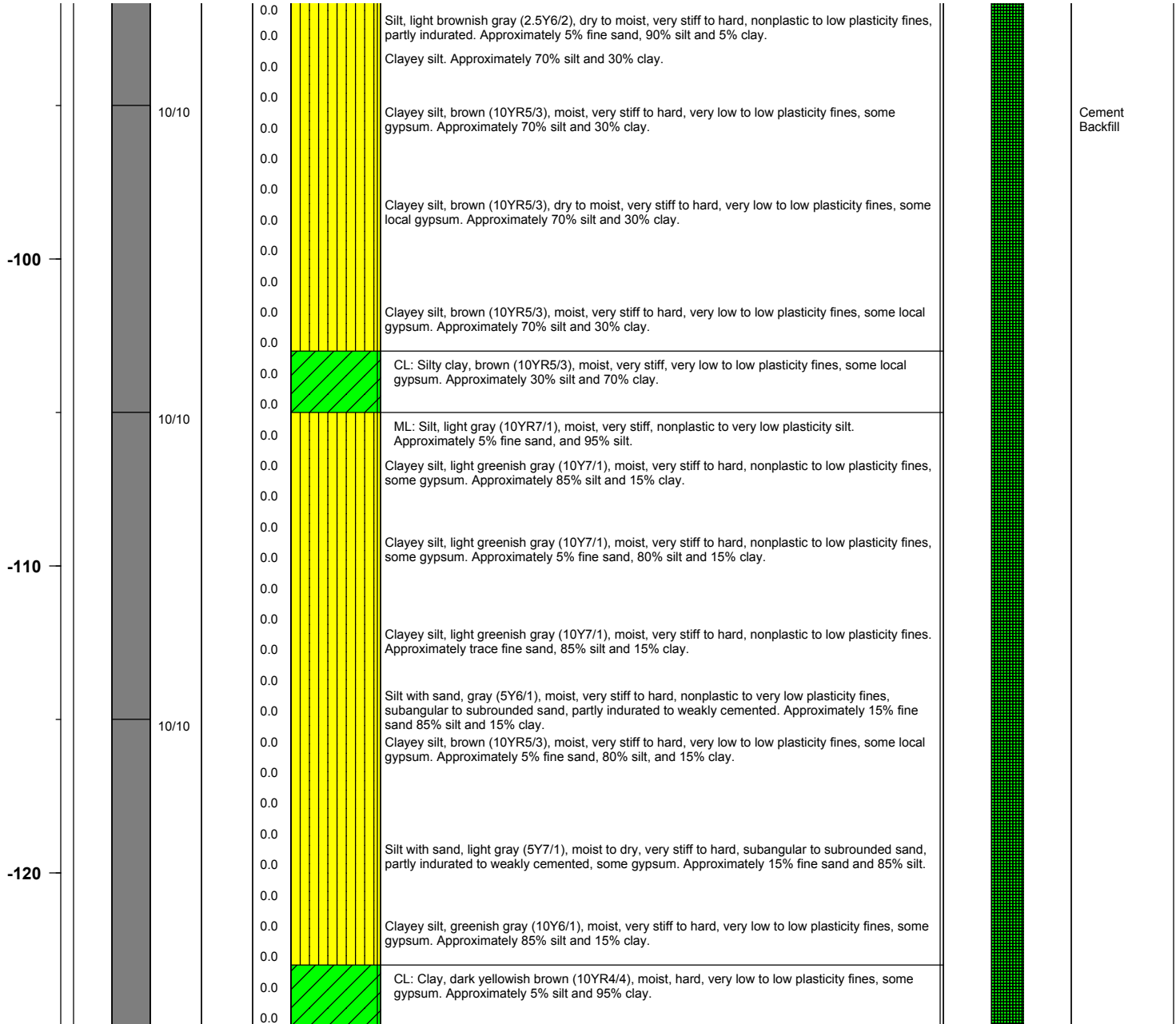
BMI Site - Hydrogeologic Characterization

Henderson, Nevada



Log of Boring No. BRC-SB-07-B

Depth Elevation (MSLD)	Sample Type	Sample Interval	Sample Recovery (feet)	Sample Retained for Analysis	PID	Lithology	Soil Description	Well Construction
---------------------------	-------------	-----------------	---------------------------	---------------------------------	-----	-----------	------------------	-------------------



Project No. 3850360

Log of Boring: BRC-SB-07-B



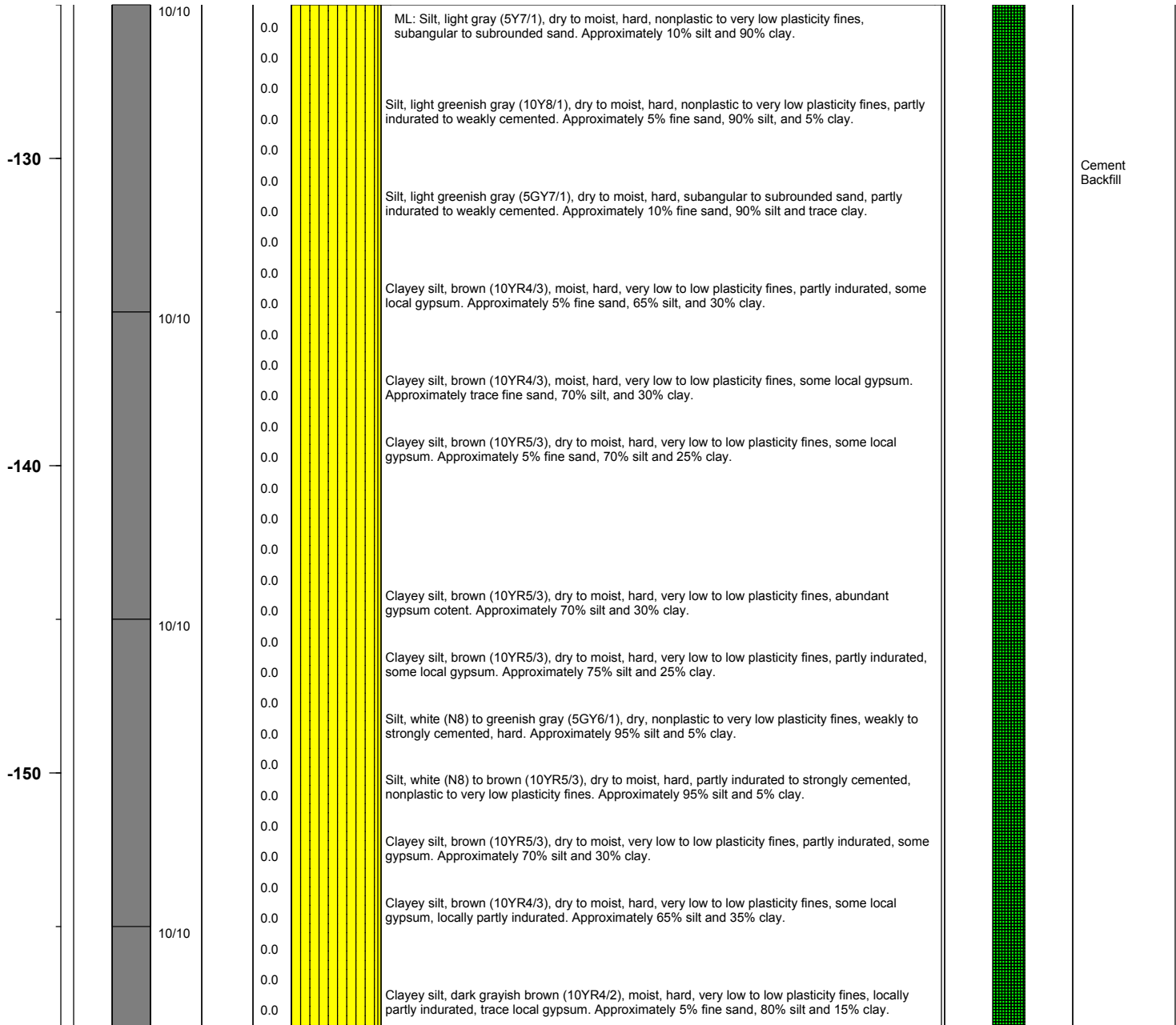
BMI Site - Hydrogeologic Characterization

Henderson, Nevada



Log of Boring No. BRC-SB-07-B

Depth Elevation (MSLD)	Sample Type	Sample Interval	Sample Recovery (feet)	Sample Retained for Analysis	PID	Lithology	Soil Description	Well Construction
---------------------------	-------------	-----------------	---------------------------	---------------------------------	-----	-----------	------------------	-------------------



Project No. 3850360

Log of Boring: BRC-SB-07-B



BMI Site - Hydrogeologic Characterization

Henderson, Nevada



Log of Boring No. BRC-SB-07-B

Depth Elevation (MSLD)	Sample Type	Sample Interval	Sample Recovery (feet)	Sample Retained for Analysis	PID	Lithology	Soil Description	Well Construction
---------------------------	-------------	-----------------	---------------------------	---------------------------------	-----	-----------	------------------	-------------------

-160					0.0		Clayey silt, brown (10YR4/3), dry to moist, hard, very low to low plasticity fines, trace local gypsum. Approximately 5% fine sand, 75% silt and 20% clay.	
					0.0		Silt with sand, greenish gray (5GY6/1), dry to moist, hard, nonplastic to very low plasticity fines, partly indurated to weakly cemented. Approximately 15% fine sand, 80% silt and 5% clay.	
		10/10			0.0		Clayey silt, greenish gray (10Y6/1), moist, hard, very low plasticity fines, partly indurated, some gypsum. Approximately 85% silt and 15% clay.	
					0.0		Clayey silt, brown (10YR4/3), hard, dry to moist, very low to low plasticity fines, some gypsum, locally partly indurated. Approximately 70% silt and 30% clay.	
					0.0			
					0.0		Clayey silt, brown (7.5YR4/2), dry to moist, hard, very low to low plasticity fines, partly indurated, some gypsum. Approximately 70% silt and 30% clay.	
-170					0.0			
					0.0		Clayey silt, brown (7.5YR4/2), dry to moist, hard, very low to low plasticity fines, partly indurated, some gypsum. Approximately 85% silt and 15% clay.	
		10/10			0.0		Clayey silt, brown (10YR4/3), moist, hard, very low to low plasticity fines, trace local gypsum. Approximately trace fine sand, 65% silt and 35% clay.	
					0.0			
					0.0		Clayey silt, brown (7.5YR4/2), moist, very stiff to hard, very low to low plasticity fines, some gypsum. Approximately 70% silt and 30% clay.	
-180					0.0			
					0.0		Clayey silt, brown (7.5YR4/2), moist, hard, very low to low plasticity fines, partly indurated, some gypsum. Approximately 70% silt and 30% clay.	
		10/10			0.0		Clayey silt, brown (7.5YR4/3), moist, hard, very low to low plasticity fines, locally partly indurated some local gypsum. Approximately 70% silt and 30% clay.	
					0.0			
					0.0		Clayey silt, brown (7.5YR4/2), dry to moist, hard, very low to low plasticity fines, partly indurated, some local gypsum. Approximately trace fine sand, 70% silt and 30% clay.	
-190					0.0			

Project No. 3850360

Log of Boring: BRC-SB-07-B



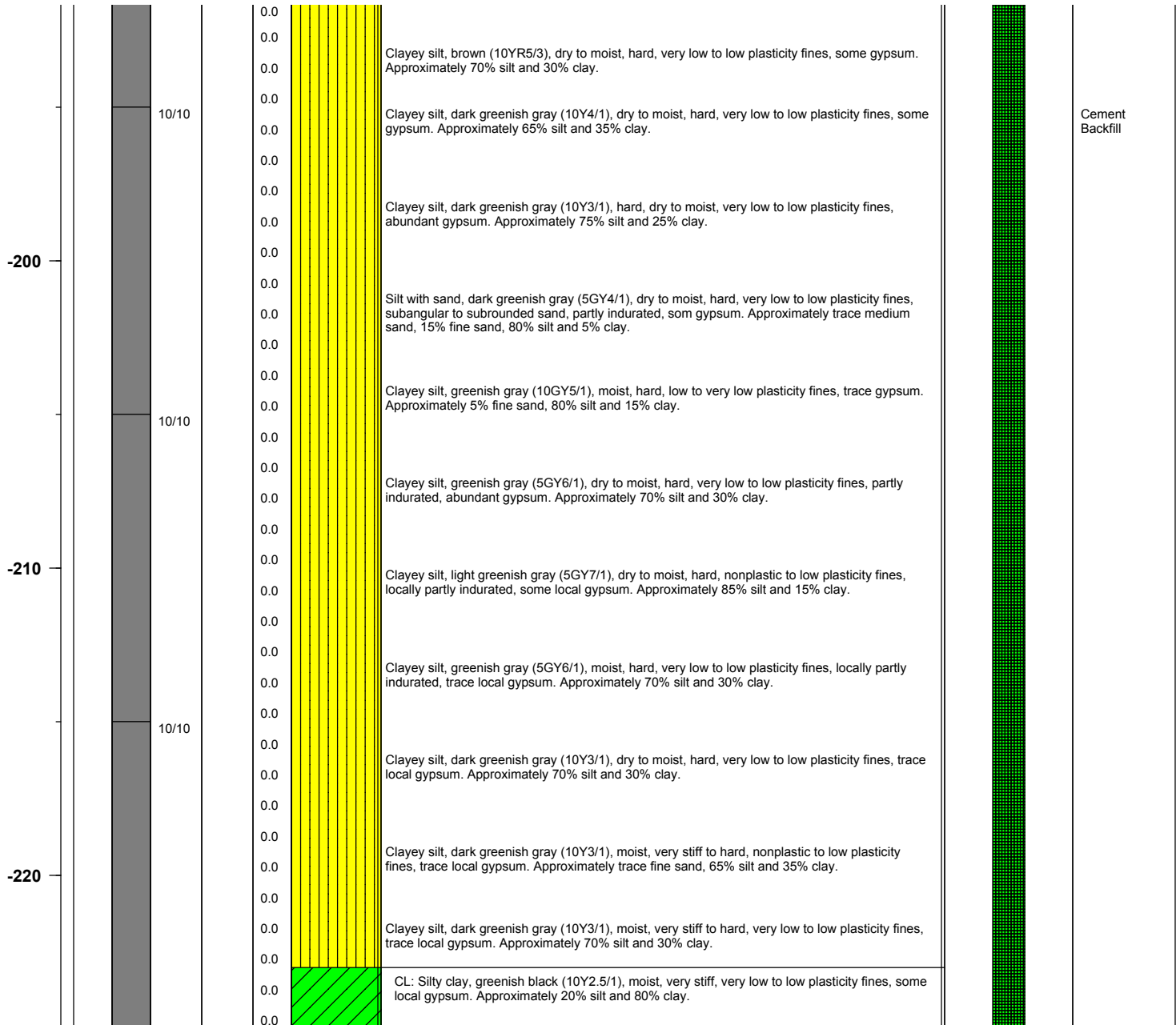
BMI Site - Hydrogeologic Characterization

Henderson, Nevada



Log of Boring No. BRC-SB-07-B

Depth Elevation (MSLD)	Sample Type	Sample Interval	Sample Recovery (feet)	Sample Retained for Analysis	PID	Lithology	Soil Description	Well Construction
---------------------------	-------------	-----------------	---------------------------	---------------------------------	-----	-----------	------------------	-------------------



Project No. 3850360

Log of Boring: BRC-SB-07-B



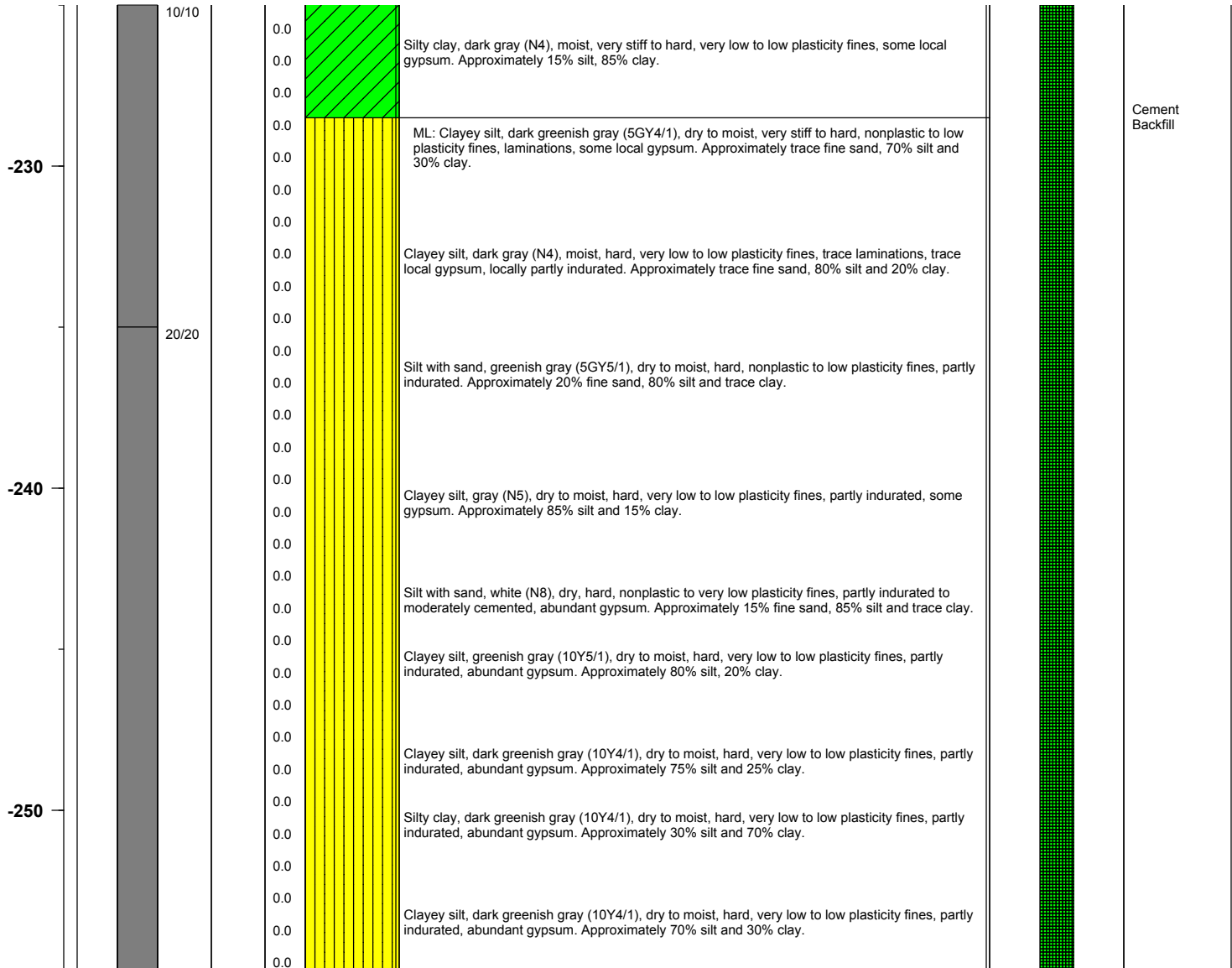
BMI Site - Hydrogeologic Characterization

Henderson, Nevada



Log of Boring No. BRC-SB-07-B

Depth Elevation (MSLD)	Sample Type	Sample Interval	Sample Recovery (feet)	Sample Retained for Analysis	PID	Lithology	Soil Description	Well Construction
---------------------------	-------------	-----------------	---------------------------	---------------------------------	-----	-----------	------------------	-------------------



Project No. 3850360

Log of Boring: BRC-SB-07-B

