

Log of Boring No. BRC-SB-10-A

BMI Site - Hydrogeologic Characterization

Henderson, Nevada



Drilling Method: Mud Rotary
Drilling Equipment: Gefco 15K
Drilling Contractor: Water Development Corporation
Driller: Steve Odom

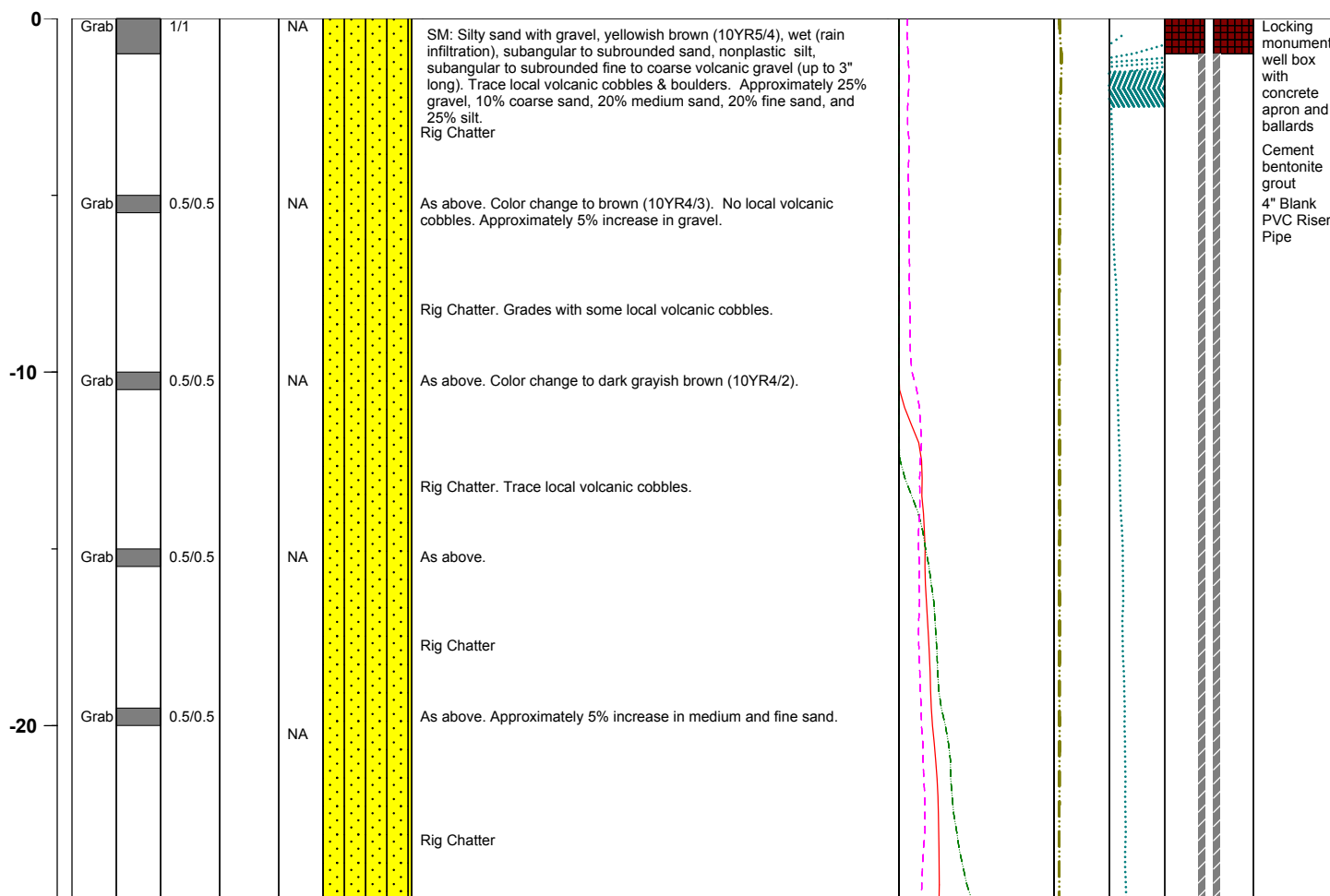
Borehole Total Depth: 400 ft bgs
Borehole Diameter: 10 in
Boring Location: Location 10 (Well ID: MCF-10A)
Depth to Water (ft. bgs): NA

Sample Type: Cuttings grab
Sample Interval: Varied

Logged By: Adam Norris
Date Started: 4/3/04
Date Completed: 4/6/04

Monitoring Well Construction			
Type of Surface Seal:	Bentonite-Cement	Screen Slot Size:	0.010 in
Blank Casing Type/Size:	4" Sch 80 PVC	Top of Screen (ft. bgs):	365 ft bgs
Screen Type/Size:	4" Sch 80 PVC	Bottom of Screen (ft. bgs):	384.5 ft bgs
Transition Sand Type:	#1C	Type of Sand Pack:	#10 x 20

Depth Elevation (BGS)	Sample Type	Sample Interval	Sample Recovery	Sample Retained for Analysis	PID	Lithology	Soil Description	Geophysical Data				Well Construction	
								E-Log			Caliper Log (inch)		Guard Log (OHM.M)
								16" (OHM)	64" (OHM)	S. PT. (OHM)			



Project No. 3850360

Log of Boring: BRC-SB-10-A

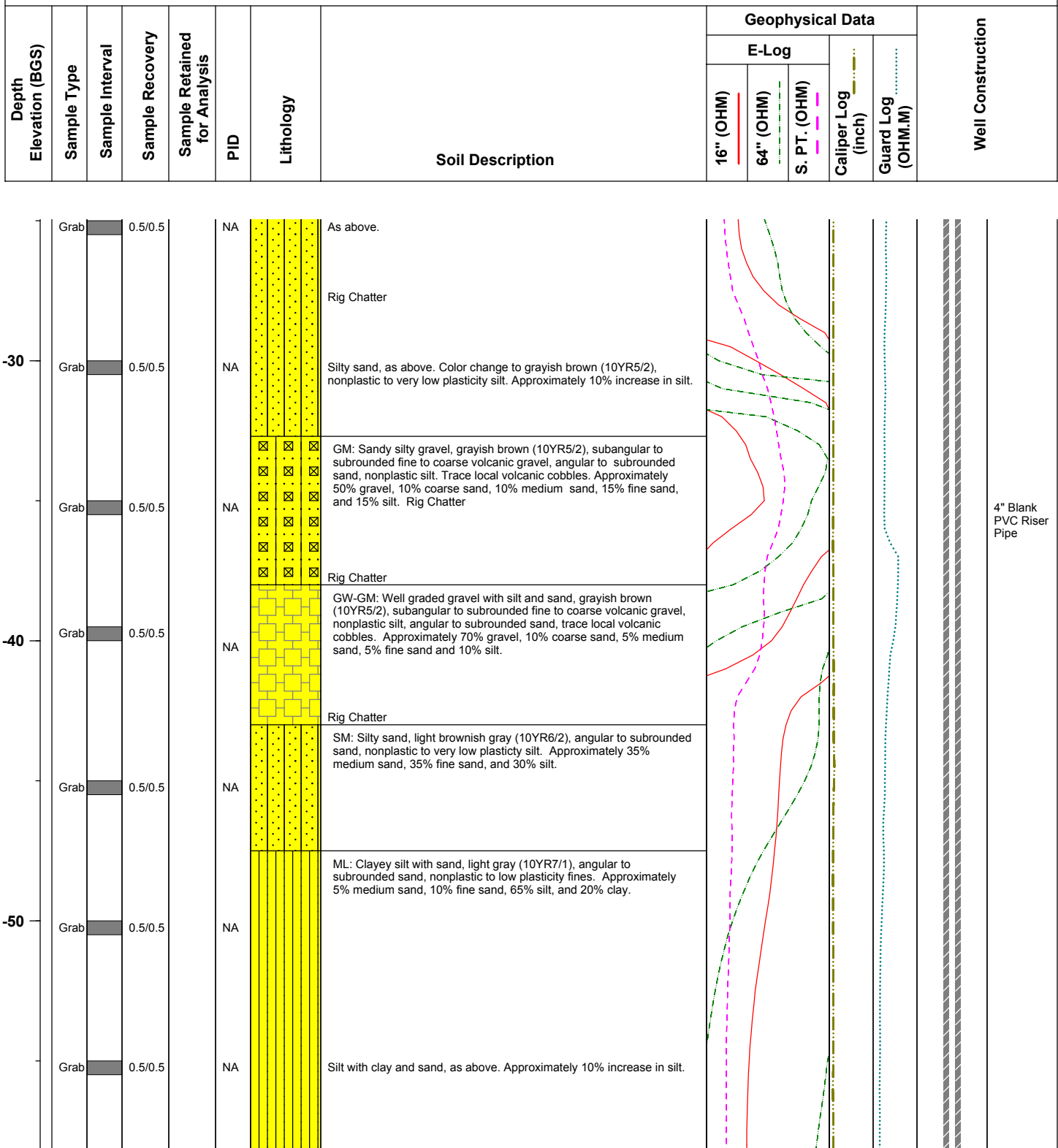


BMI Site - Hydrogeologic Characterization

Henderson, Nevada



Log of Boring No. BRC-SB-10-A



Project No. 3850360

Log of Boring: BRC-SB-10-A



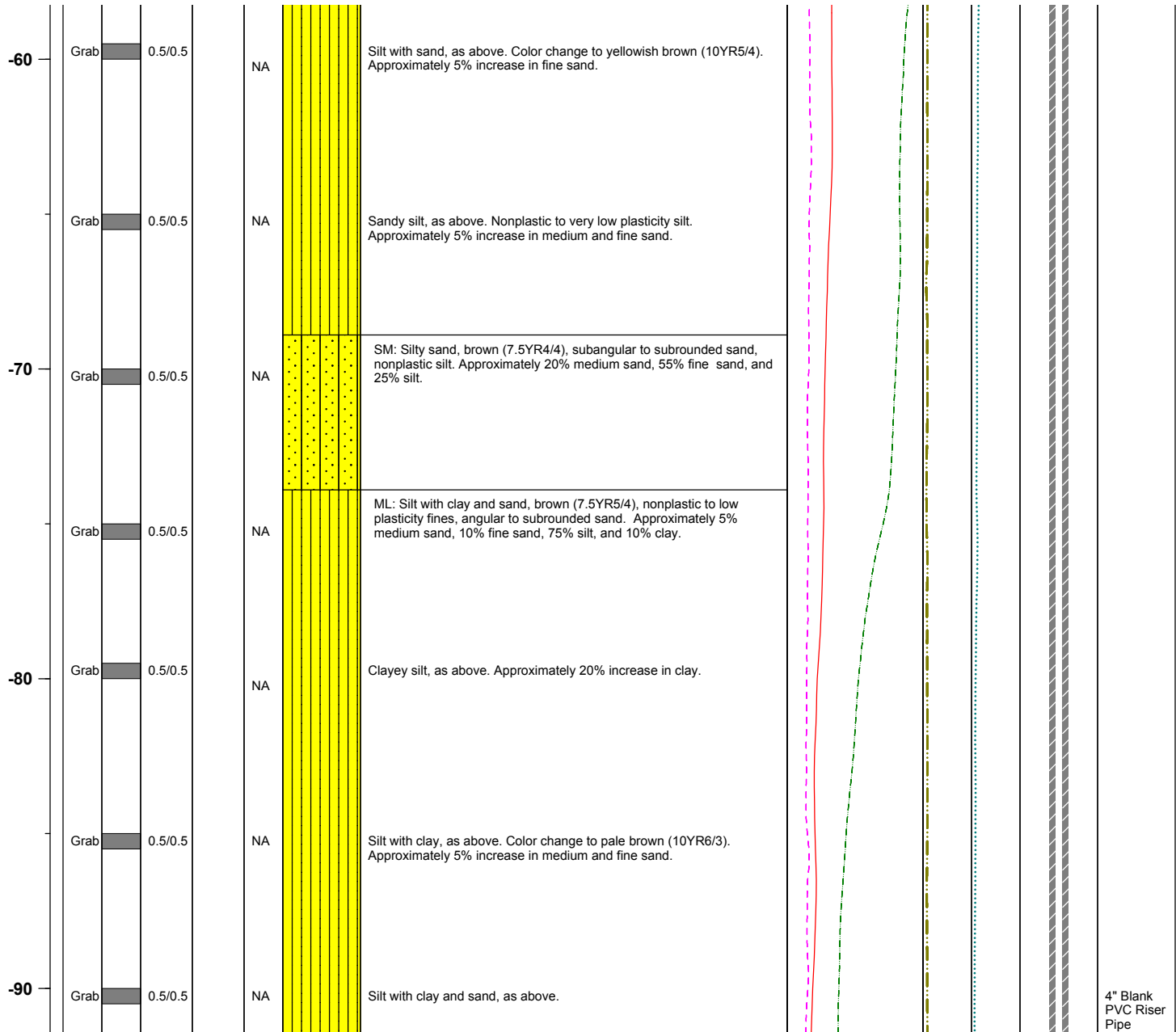
BMI Site - Hydrogeologic Characterization

Henderson, Nevada



Log of Boring No. BRC-SB-10-A

Depth Elevation (BGS)	Sample Type	Sample Interval	Sample Recovery	Sample Retained for Analysis	PID	Lithology	Soil Description	Geophysical Data			Well Construction	
								E-Log		Caliper Log (inch)		Guard Log (OHM.M)
								16" (OHM)	64" (OHM)			



Project No. 3850360

Log of Boring: BRC-SB-10-A



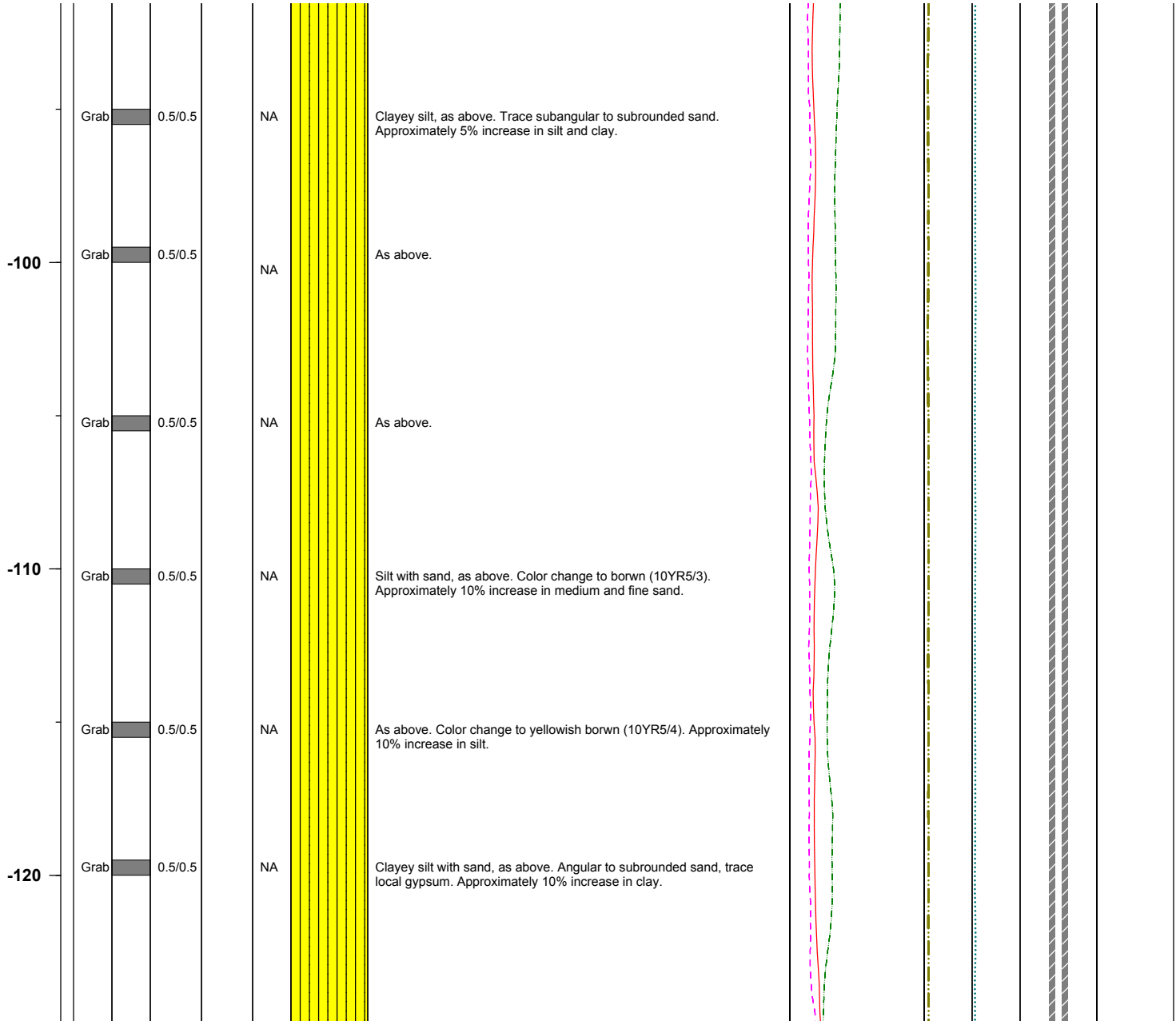
BMI Site - Hydrogeologic Characterization

Henderson, Nevada



Log of Boring No. BRC-SB-10-A

Depth Elevation (BGS)	Sample Type	Sample Interval	Sample Recovery	Sample Retained for Analysis	PID	Lithology	Soil Description	Geophysical Data				Well Construction
								E-Log			Caliper Log (inch)	
								16" (OHM)	64" (OHM)	S. PT. (OHM)		



Project No. 3850360

Log of Boring: BRC-SB-10-A



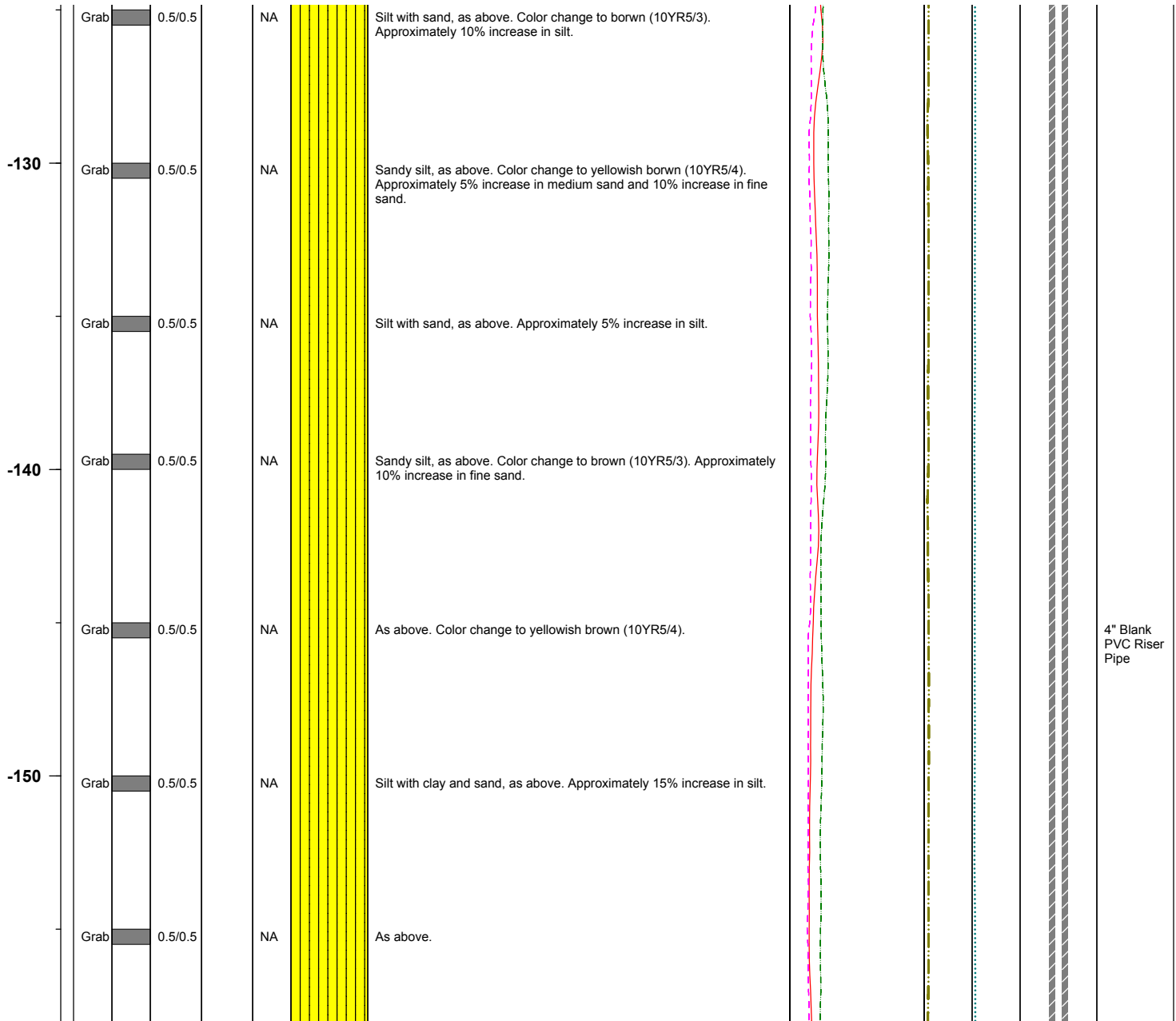
BMI Site - Hydrogeologic Characterization

Henderson, Nevada



Log of Boring No. BRC-SB-10-A

Depth Elevation (BGS)	Sample Type	Sample Interval	Sample Recovery	Sample Retained for Analysis	PID	Lithology	Soil Description	Geophysical Data				Well Construction
								E-Log			Caliper Log (inch)	
								16" (OHM)	64" (OHM)	S. PT. (OHM)		



Project No. 3850360

Log of Boring: BRC-SB-10-A



BMI Site - Hydrogeologic Characterization

Henderson, Nevada



Log of Boring No. BRC-SB-10-A

Depth Elevation (BGS)	Sample Type	Sample Interval	Sample Recovery	Sample Retained for Analysis	PID	Lithology	Soil Description	Geophysical Data				Well Construction	
								E-Log			Caliper Log (inch)		Guard Log (OHM.M)
								16" (OHM)	64" (OHM)	S. P.T. (OHM)			

-160	Grab	0.5/0.5	NA	As above.								
	Grab	0.5/0.5	NA	Sandy silt with clay, as above. Approximately 5% increase in medium sand, and 10% increase in fine sand.								
-170	Grab	0.5/0.5	NA	Silt with sand, as above. Approximately 10% increase in silt.								
	Grab	0.5/0.5	NA	Silt with clay and sand, as above. Approximately 5% increase in clay.								
-180	Grab	0.5/0.5	NA	Sandy silt, as above. Approximately 5% increase in fine sand.								
	Grab	0.5/0.5	NA	Clayey silt, as above. No local gypsum. Approximately 15% increase in clay.								
-190	Grab	0.5/0.5	NA	Clayey silt with sand, as above.								

Project No. 3850360

Log of Boring: BRC-SB-10-A



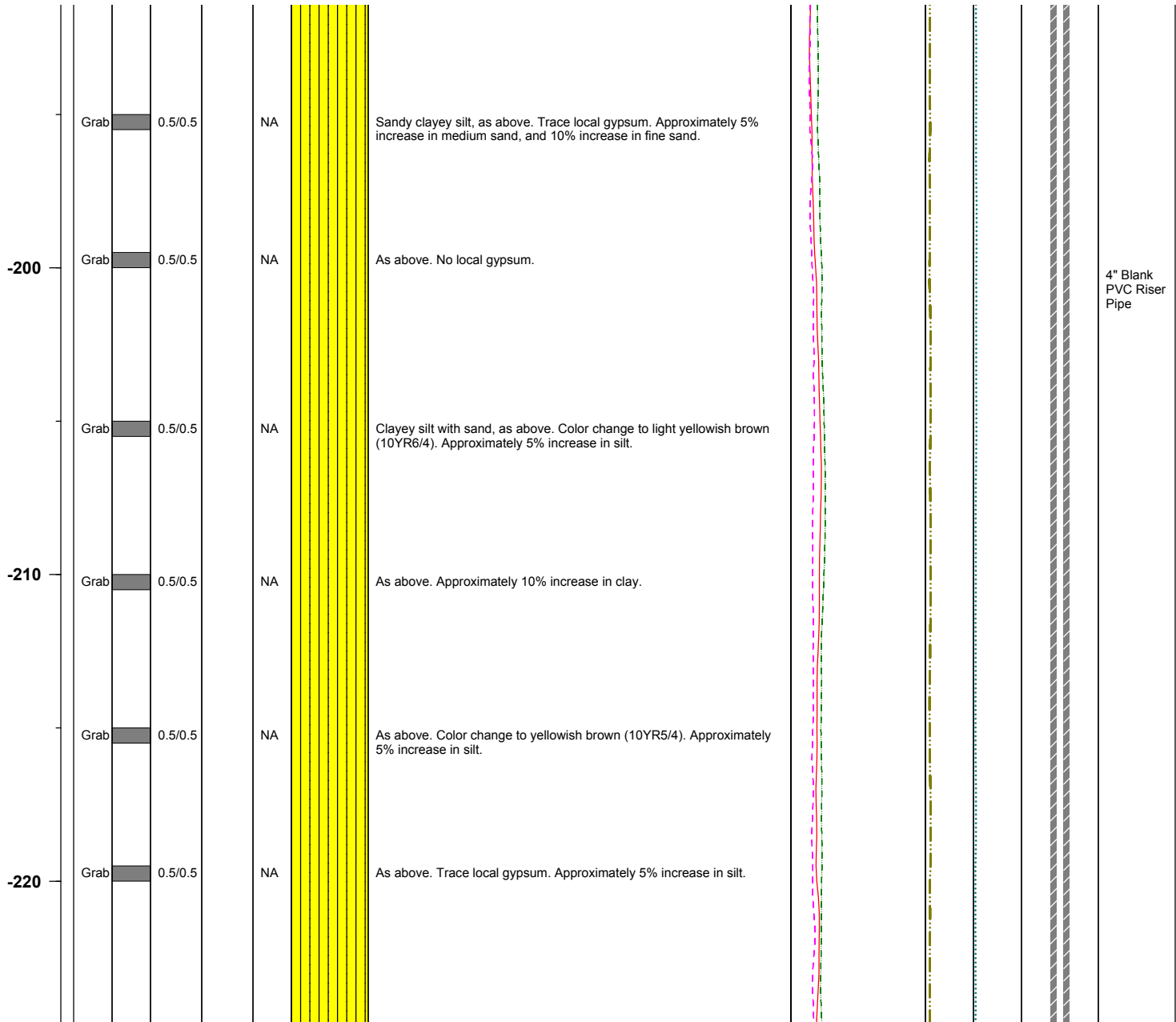
BMI Site - Hydrogeologic Characterization

Henderson, Nevada



Log of Boring No. BRC-SB-10-A

Depth Elevation (BGS)	Sample Type	Sample Interval	Sample Recovery	Sample Retained for Analysis	PID	Lithology	Soil Description	Geophysical Data				Well Construction
								E-Log			Caliper Log (inch)	
								16" (OHM)	64" (OHM)	S. PT. (OHM)		
								<div><div></div></div>	<div><div></div></div>	<div><div></div></div>		



Project No. 3850360

Log of Boring: BRC-SB-10-A



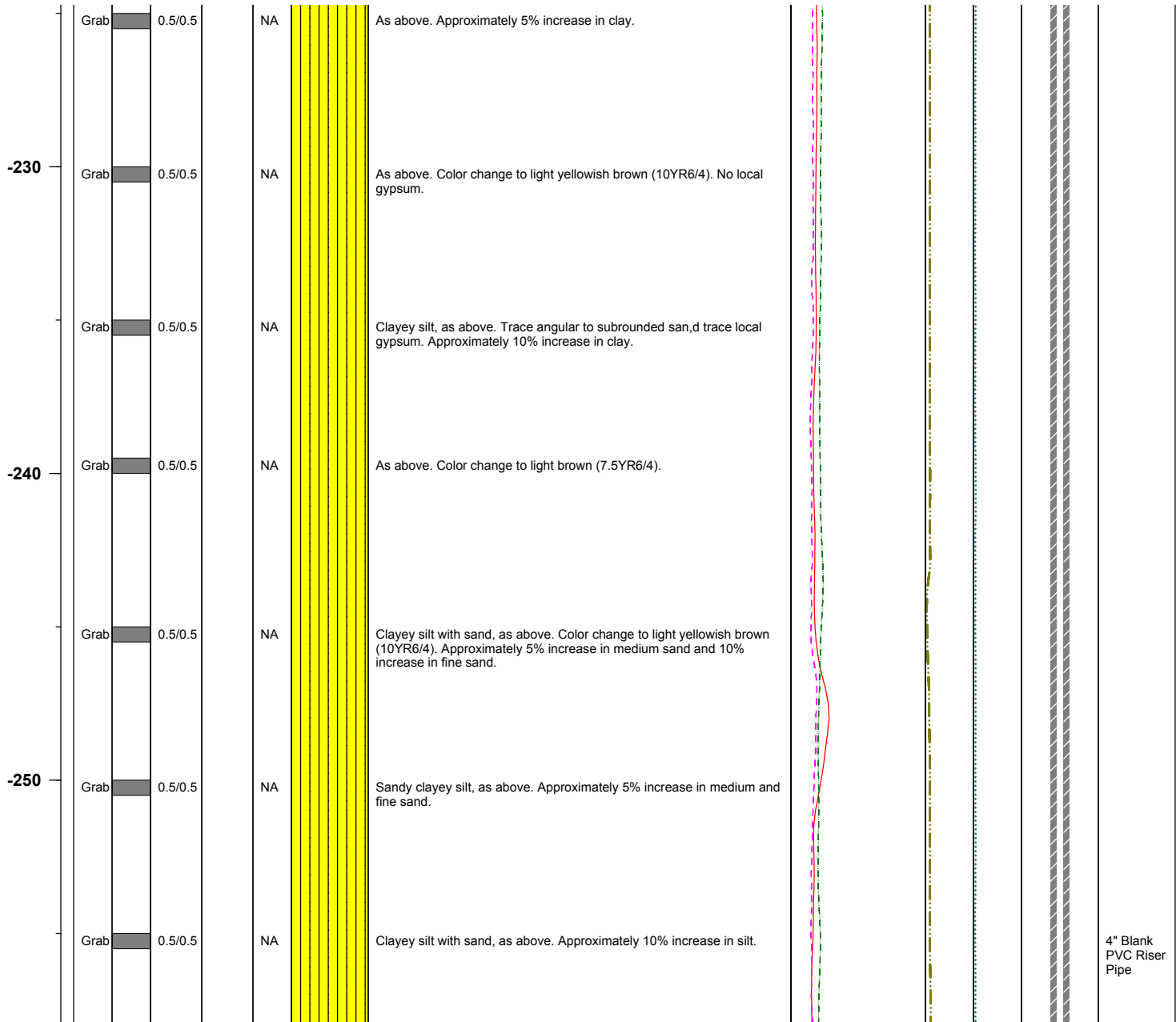
BMI Site - Hydrogeologic Characterization

Henderson, Nevada



Log of Boring No. BRC-SB-10-A

Depth Elevation (BGS)	Sample Type	Sample Interval	Sample Recovery	Sample Retained for Analysis	PID	Lithology	Soil Description	Geophysical Data			Well Construction	
								E-Log		Caliper Log (inch)		Guard Log (OHM.M)
								16" (OHM)	64" (OHM)			



Project No. 3850360

Log of Boring: BRC-SB-10-A



BMI Site - Hydrogeologic Characterization

Henderson, Nevada



Log of Boring No. BRC-SB-10-A

Depth Elevation (BGS)	Sample Type	Sample Interval	Sample Recovery	Sample Retained for Analysis	PID	Lithology	Soil Description	Geophysical Data				Well Construction
								E-Log			Caliper Log (inch)	
								16" (OHM)	64" (OHM)	S. PT. (OHM)		
								<div><div></div></div>	<div><div></div></div>	<div><div></div></div>		

-260	Grab	0.5/0.5	NA	Clayey silt with sand, light brown (7.5YR6/4) nonplastic to low plasticity fines, angular to subrounded sand. Approximately 5% medium sand, 10% fine sand, 70% silt and 15% clay.								
	Grab	0.5/0.5	NA	SM: Silty sand, light brown (7.5YR6/3) , angular to subrounded sand, nonplastic to low plasticity fines. Approximately 20% medium sand, 40% fine sand, 35% silt and 5% clay.								
-270	Grab	0.5/0.5	NA	ML: Clayey silt with sand, light brown (7.5YR6/4), nonplastic to low plasticity fines, angular to subrounded sand. Approximately 5% medium sand, 15% fine sand, 60% silt and 20% clay.								
	Grab	0.5/0.5	NA	As above. Color change to brown (7.5YR5/4).								
-280	Grab	0.5/0.5	NA	As above. Color change to brown (7.5YR6/4). Approximately 5% increase in medium sand.								
	Grab	0.5/0.5	NA	Silt with clay and sand, as above. Approximately 5% increase in silt.								
-290	Grab	0.5/0.5	NA	Silt with sand, as above. Color change to light brown (7.5YR6/3), trace local gypsum. Approximately 10% increase in silt.								

Project No. 3850360

Log of Boring: BRC-SB-10-A



BMI Site - Hydrogeologic Characterization

Henderson, Nevada



Log of Boring No. BRC-SB-10-A

Depth Elevation (BGS)	Sample Type	Sample Interval	Sample Recovery	Sample Retained for Analysis	PID	Lithology	Soil Description	Geophysical Data				Well Construction
								E-Log			Caliper Log (inch)	
								16" (OHM)	64" (OHM)	S. PT. (OHM)		
								<div><div></div></div>	<div><div></div></div>	<div><div></div></div>		

	Grab	0.5/0.5	NA				Sandy silt, as above. Approximately 5% increase in medium and fine sand.					
-300	Grab	0.5/0.5	NA				Clayey silt, as above. Color change to light brown (7.5YR6/4). Approximately 10% increase in clay.					
	Grab	0.5/0.5	NA				Silt with sand, as above. Color change to brown (7.5YR5/4) no local gypsum. Approximately 20% increase in silt.					
-310	Grab	0.5/0.5	NA				Clayey silt with sand, as above. Approximately 10% increase in clay.					
	Grab	0.5/0.5	NA				As above. Color change to light brown (7.5YR6/3). Approximately 5% increase in clay.					
-320	Grab	0.5/0.5	NA				As above. Color change to light brown (7.5YR6/4) trace local gypsum. Approximately 5% increase in silt.					

4" Blank
PVC Riser
Pipe

Project No. 3850360

Log of Boring: BRC-SB-10-A



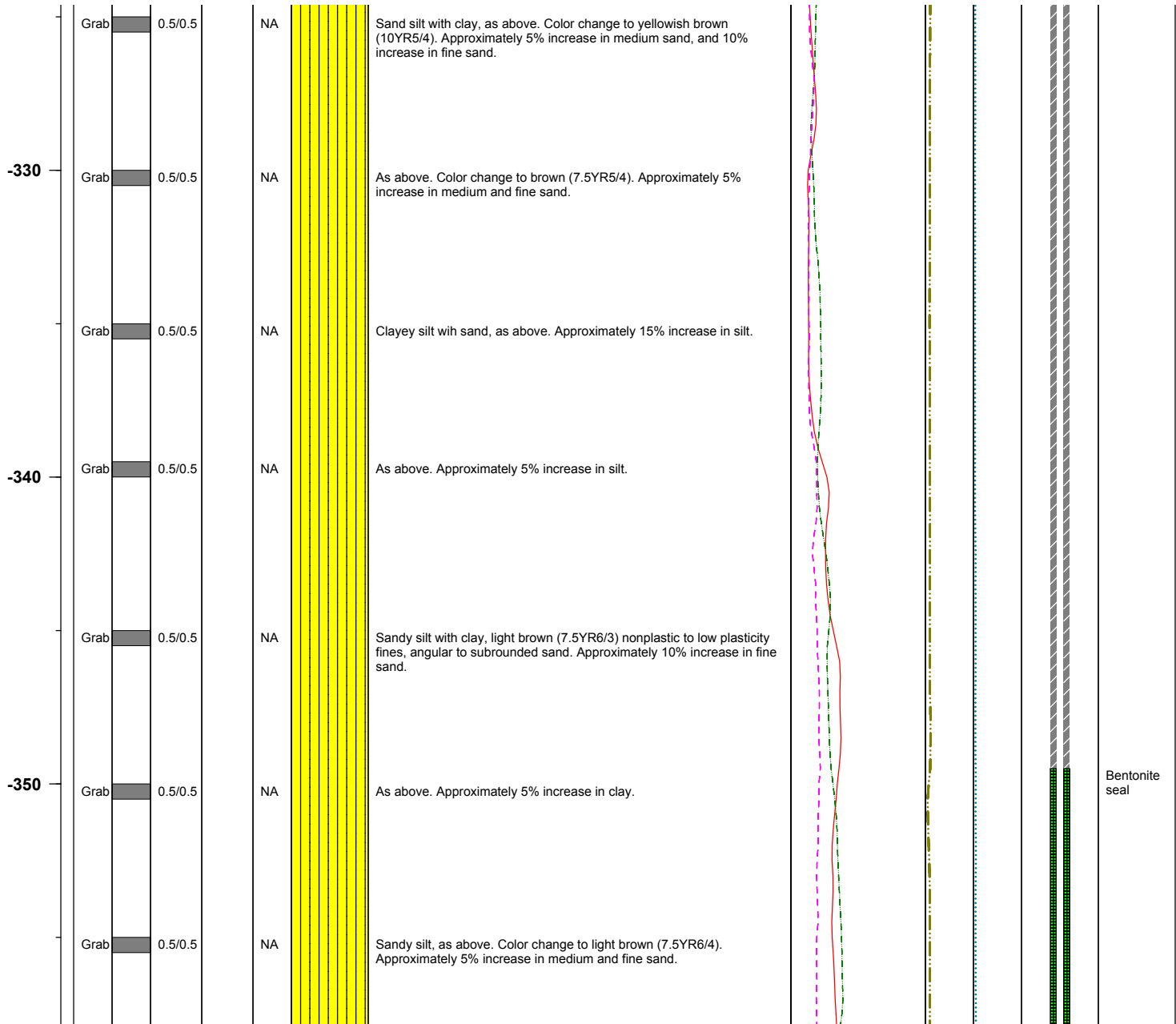
BMI Site - Hydrogeologic Characterization

Henderson, Nevada



Log of Boring No. BRC-SB-10-A

Depth Elevation (BGS)	Sample Type	Sample Interval	Sample Recovery	Sample Retained for Analysis	PID	Lithology	Soil Description	Geophysical Data				Well Construction	
								E-Log			Caliper Log (inch)		Guard Log (OHM.M)
								16" (OHM)	64" (OHM)	S. PT. (OHM)			



Project No. 3850360

Log of Boring: BRC-SB-10-A



BMI Site - Hydrogeologic Characterization

Henderson, Nevada



Log of Boring No. BRC-SB-10-A

Depth Elevation (BGS)	Sample Type	Sample Interval	Sample Recovery	Sample Retained for Analysis	PID	Lithology	Soil Description	Geophysical Data					Well Construction	
								E-Log			Caliper Log (inch)	Guard Log (OHM.M)		
								16" (OHM)	64" (OHM)	S. PT. (OHM)				
360	Grab		0.5/0.5		NA		Silt with sand, as above. Color change to light brown (7.5YR6/3), trace loca gypsum. Approximately 15% increase in silt.							#1C Transition Sand #10 x 20 Sand Pack
	Grab		0.5/0.5		NA		Sandy silt, as above. Color change to light brown (7.5YR6/4). Approximately 5% increase in medium sand, and 10% increase in fine sand.							4" 0.010 Slot PVC screen
370	Grab		0.5/0.5		NA		As above. Color change to light brown (7.5YR6/3).							
	Grab		0.5/0.5		NA		Sandy silt with clay, as above. Color change to light brown (7.5YR6/4).							
380	Grab		0.5/0.5		NA		As above. No local gypsum. Approximately 5% increase in silt.							
	Grab		0.5/0.5		NA		As above. Color change to light brown (7.5YR6/3).							Threaded PVC Well Base Cap
390	Grab		0.5/0.5				Sandy silt, as above. Color change to light brown (7.5YR6/4). Approximately 5% increase in fine sand.							

Project No. 3850360

Log of Boring: BRC-SB-10-A



BMI Site - Hydrogeologic Characterization

Henderson, Nevada



Log of Boring No. BRC-SB-10-A

Depth Elevation (BGS)	Sample Type	Sample Interval	Sample Recovery	Sample Retained for Analysis	PID	Lithology	Soil Description	Geophysical Data				Well Construction	
								E-Log			Caliper Log (inch)		Guard Log (OHM.M)
								16" (OHM)	64" (OHM)	S. P.T. (OHM)			

-400	Grab	0.5/0.5					Sandy silt with clay, as above. Color change to light brown (7.5YR6/3). Approximately 5% increase in clay.						
	Grab	0.5/0.5					Sandy silt, as above. Approximately 5% increase in silt.						

Project No. 3850360

Log of Boring: BRC-SB-10-A

