

Log of Boring No. BRC-SB-08-B

BMI Site - Hydrogeologic Characterization

Henderson, Nevada



Drilling Method: Rotary Sonic
Drilling Equipment: Rotary Sonic
Drilling Contractor: Prosonic Corporation
Driller: Gerald Sealy

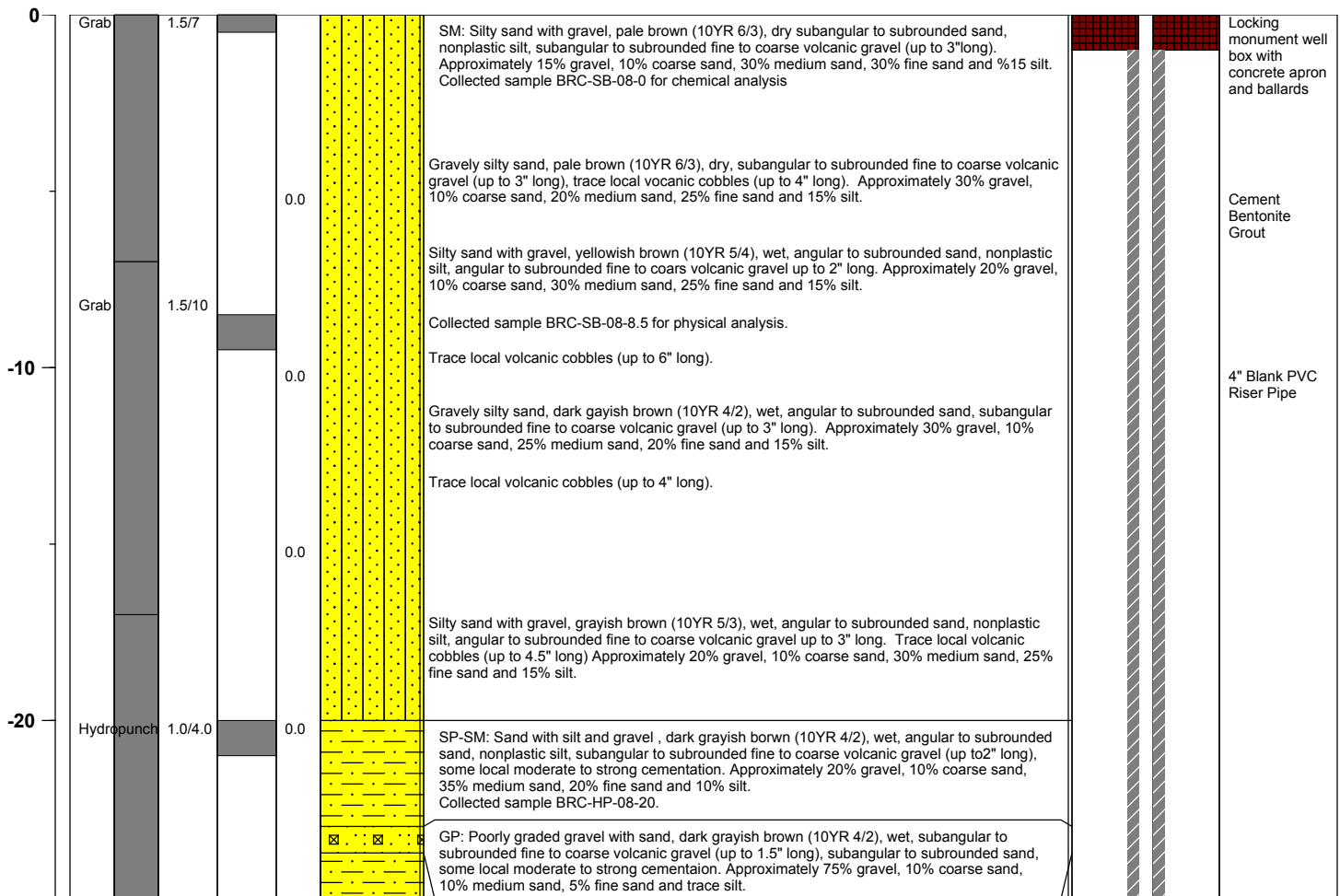
Borehole Total Depth: 400 ft bgs
Borehole Diameter: 9.5"
Boring Location: Location 8 (Well ID: MCF-08B)
Depth to Water (ft. bgs): NA

Sample Type: Rotosonic
Sample Interval: Continuous

Logged By: Adam Norris
Date Started: 5/10/2004
Date Completed: 5/20/2004

Monitoring Well Construction			
Type of Surface Seal:	Bentonite Grout	Screen Slot Size:	0.010 in
Blank Casing Type/Size:	4" Sch 80 PVC	Top of Screen (ft. bgs):	107.5 ft bgs
Screen Type/Size:	4" Sch 80 PVC	Bottom of Screen (ft. bgs):	137.5 ft bgs
Transition Sand Type:	N/A	Type of Sand Pack:	#2 x 12

Depth Elevation (MSLD)	Sample Type	Sample Interval	Sample Recovery (feet)	Sample Retained for Analysis	PID	Lithology	Soil Description	Well Construction
---------------------------	-------------	-----------------	---------------------------	---------------------------------	-----	-----------	------------------	-------------------



Project No. 3850360

Log of Boring: BRC-SB-08-B



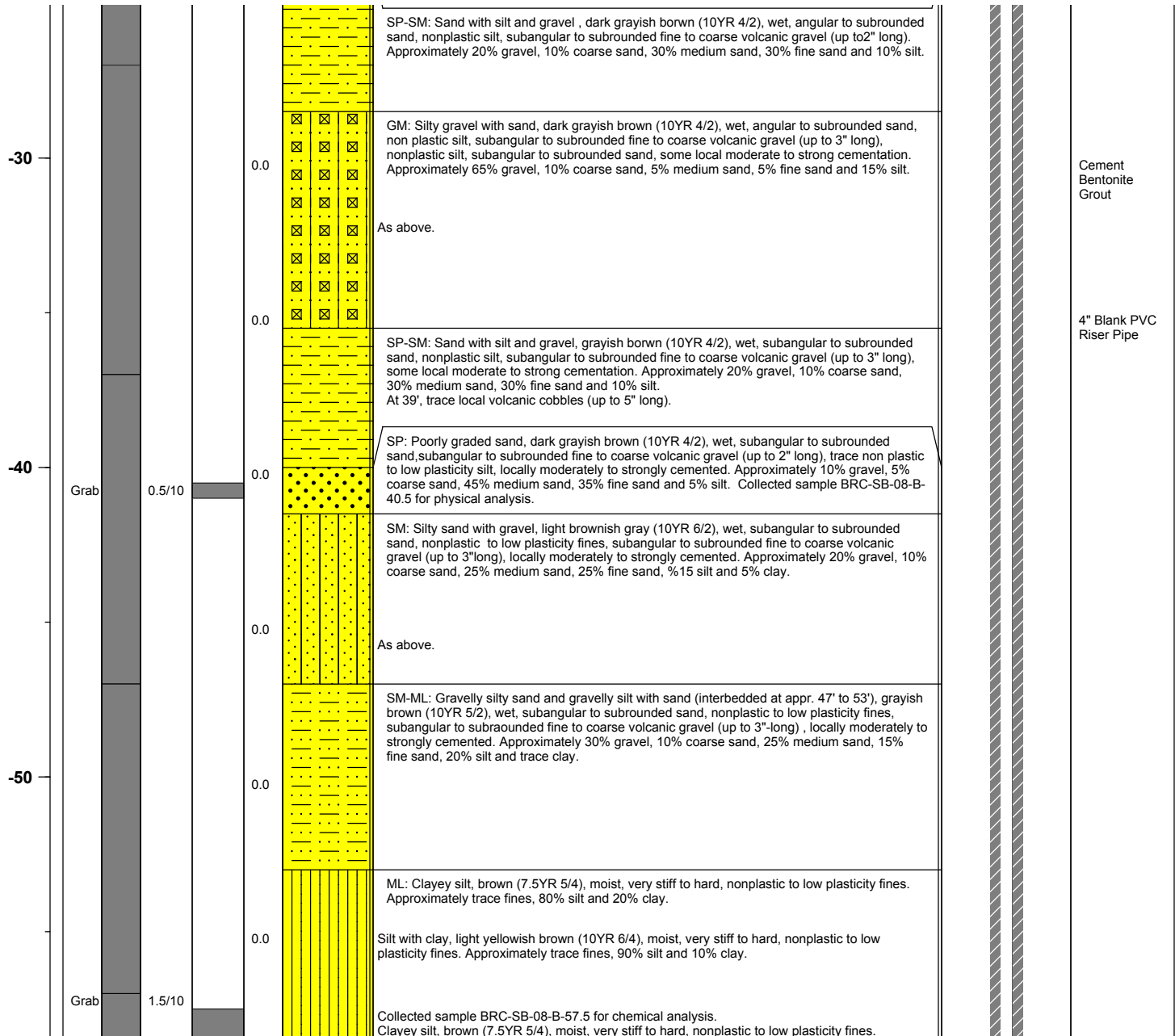
BMI Site - Hydrogeologic Characterization

Henderson, Nevada



Log of Boring No. BRC-SB-08-B

Depth Elevation (MSLD)	Sample Type	Sample Interval	Sample Recovery (feet)	Sample Retained for Analysis	PID	Lithology	Soil Description	Well Construction
---------------------------	-------------	-----------------	---------------------------	---------------------------------	-----	-----------	------------------	-------------------



Project No. 3850360

Log of Boring: BRC-SB-08-B



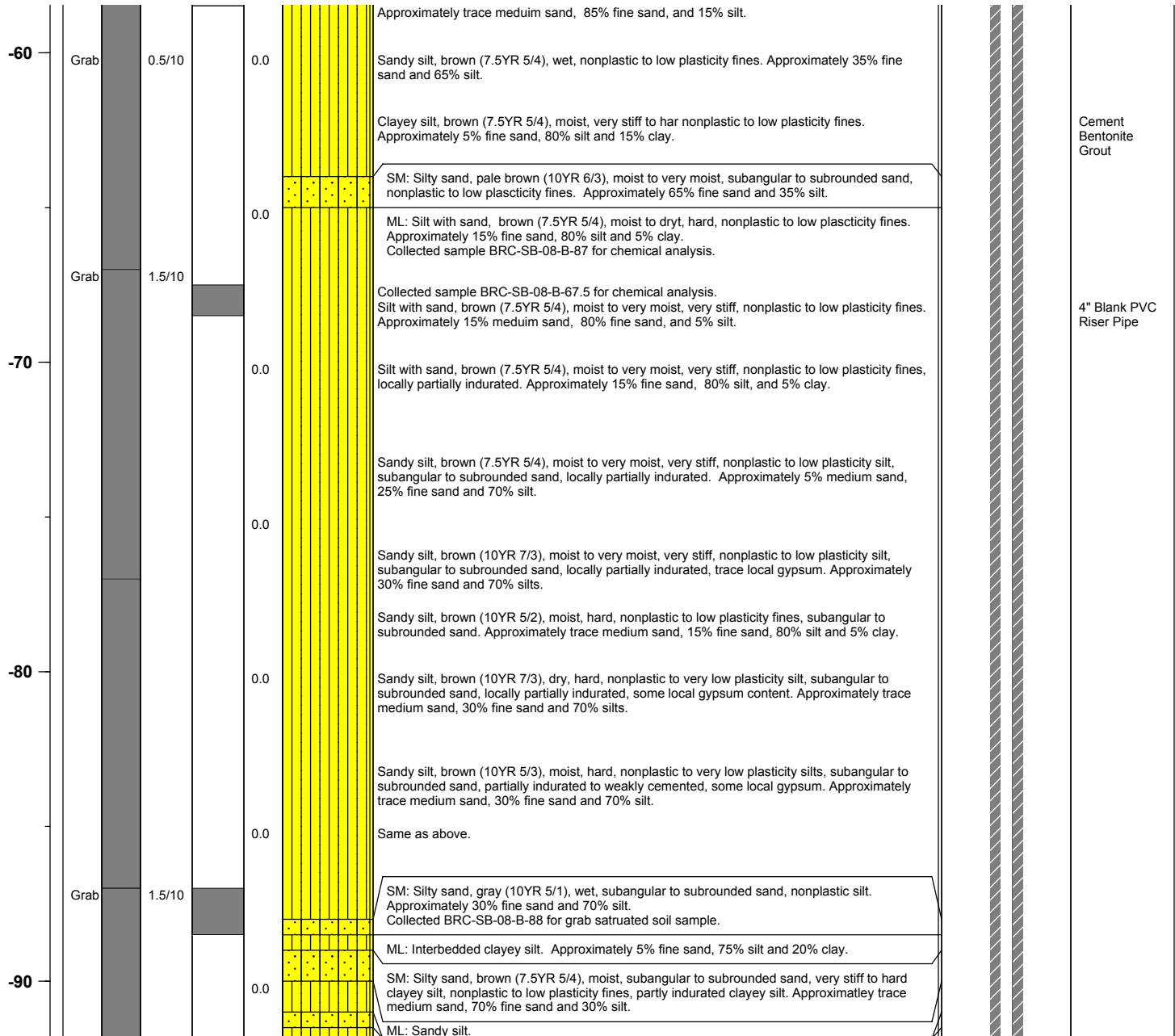
BMI Site - Hydrogeologic Characterization

Henderson, Nevada



Log of Boring No. BRC-SB-08-B

Depth Elevation (MSLD)	Sample Type	Sample Interval	Sample Recovery (feet)	Sample Retained for Analysis	PID	Lithology	Soil Description	Well Construction
---------------------------	-------------	-----------------	---------------------------	---------------------------------	-----	-----------	------------------	-------------------



Project No. 3850360

Log of Boring: BRC-SB-08-B



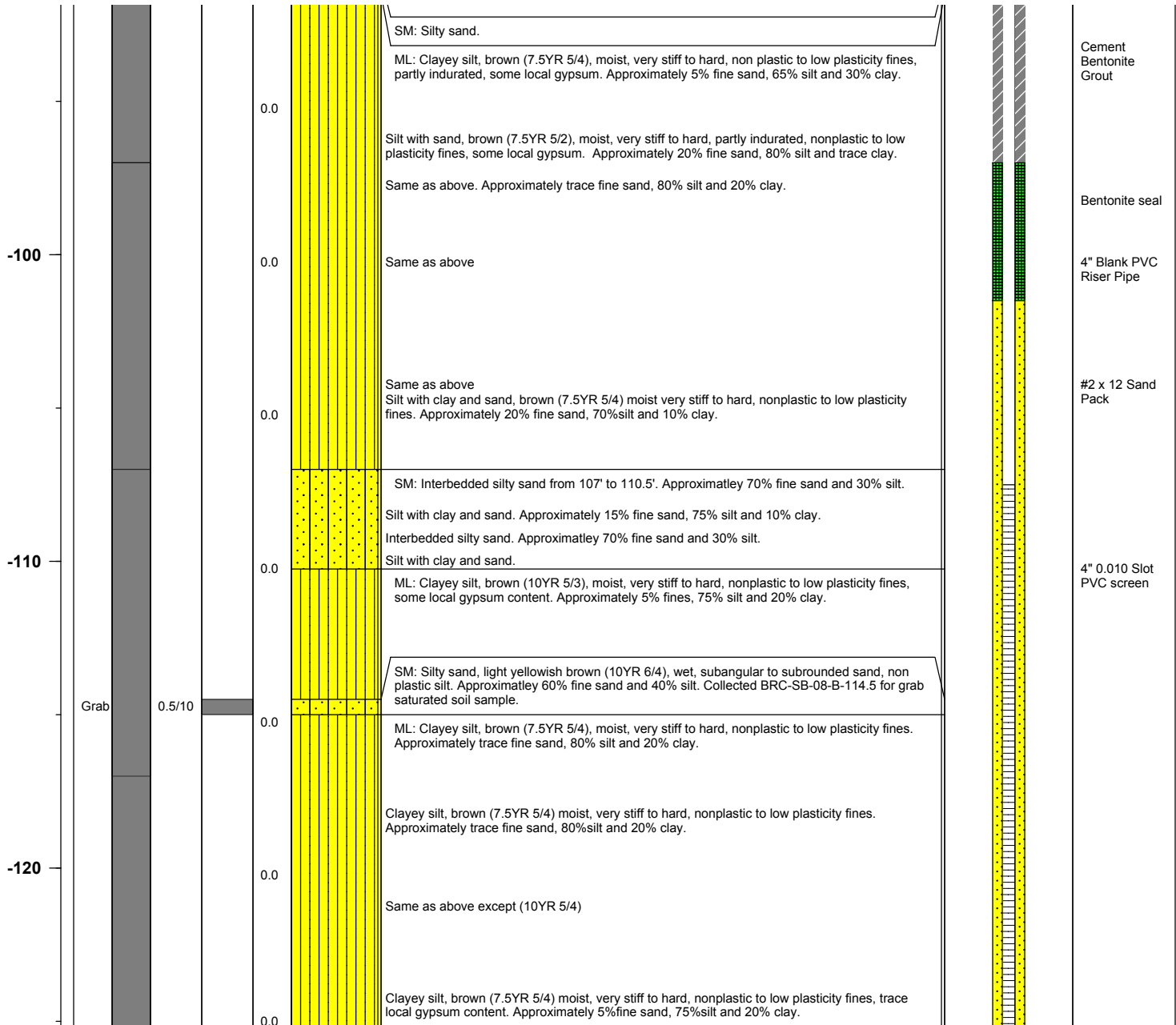
BMI Site - Hydrogeologic Characterization

Henderson, Nevada



Log of Boring No. BRC-SB-08-B

Depth Elevation (MSLD)	Sample Type	Sample Interval	Sample Recovery (feet)	Sample Retained for Analysis	PID	Lithology	Soil Description	Well Construction
---------------------------	-------------	-----------------	---------------------------	---------------------------------	-----	-----------	------------------	-------------------



Project No. 3850360

Log of Boring: BRC-SB-08-B



Page 4 of 13

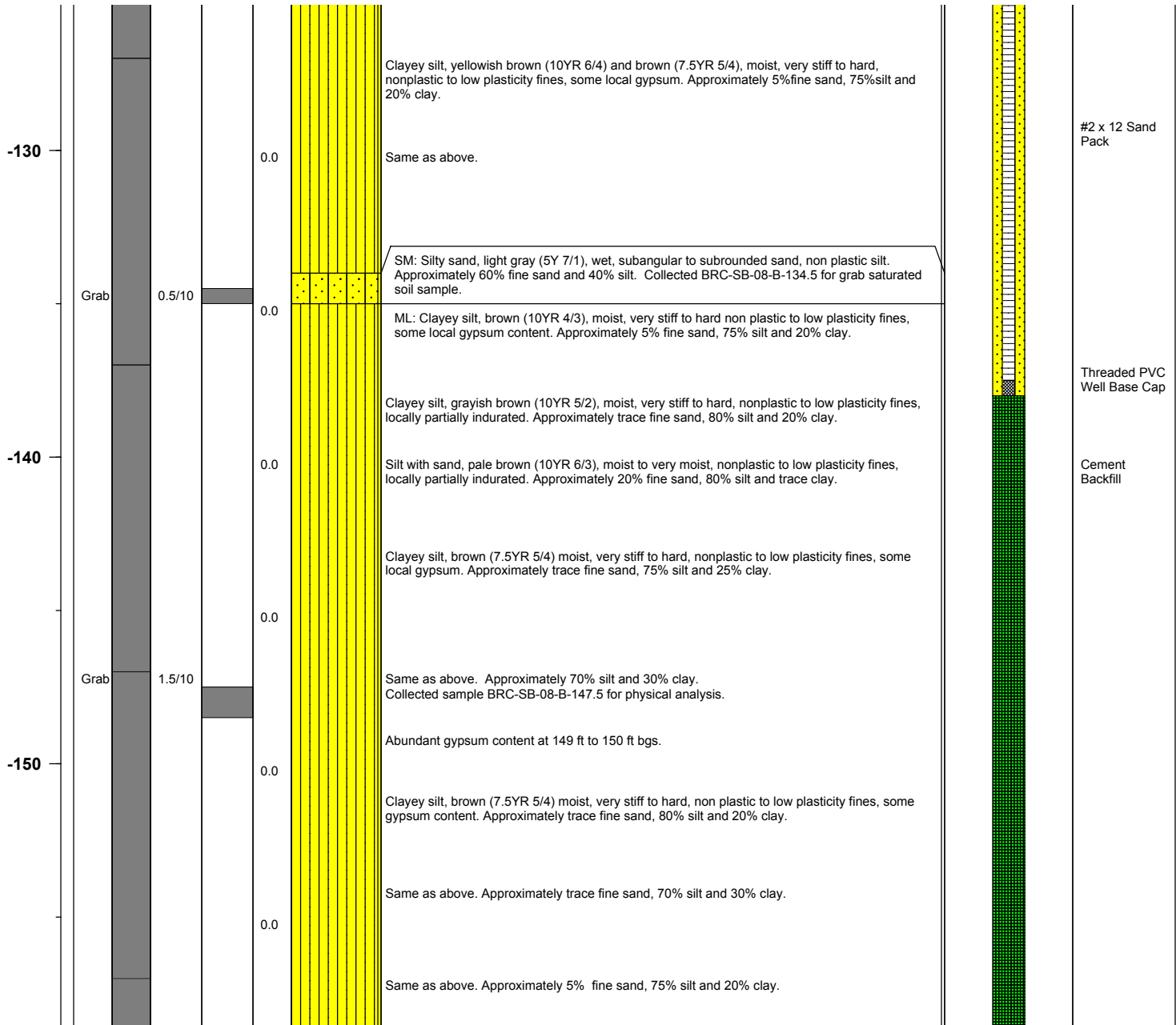
BMI Site - Hydrogeologic Characterization

Henderson, Nevada



Log of Boring No. BRC-SB-08-B

Depth Elevation (MSLD)	Sample Type	Sample Interval	Sample Recovery (feet)	Sample Retained for Analysis	PID	Lithology	Soil Description	Well Construction
---------------------------	-------------	-----------------	---------------------------	---------------------------------	-----	-----------	------------------	-------------------



Project No. 3850360

Log of Boring: BRC-SB-08-B



BMI Site - Hydrogeologic Characterization

Henderson, Nevada



Log of Boring No. BRC-SB-08-B

Depth Elevation (MSLD)	Sample Type	Sample Interval	Sample Recovery (feet)	Sample Retained for Analysis	PID	Lithology	Soil Description	Well Construction
---------------------------	-------------	-----------------	---------------------------	---------------------------------	-----	-----------	------------------	-------------------

-160							Same as above. Approximately trace fine sand, 75% silt and 25% clay.	
							Same as above. Approximately 65% silt and 35% clay.	
	Grab	0.5/10					SM: Silty sand, grayish brown (10YR 5/2), wet, subangular to subrounded sand, nonplastic silt. Approximately 60% fine sand and 40% silt. Collected BRC-SB-08-B-167 for grab saturated soil sample.	
-170							ML: Clayey silt, yellowish brown (10YR 5/4), moist, hard, nonplastic to low plasticity fines, some local gypsum content. Approximately 75% silt and 25% clay.	
							Clayey silt, brown (10YR 5/3) moist, hard, nonplastic to low plasticity fines, some local gypsum. Approximately 70% silt and 30% clay.	
							Same as above except pale brown (10YR 6/3). Approximately 80% silt and 20% clay.	
							As above, no gypsum.	
-180	Grab	0.5/10					Sandy silt, grayish brown (10YR 5/2), wet, non plastic to very low plasticity silt, subangular to subrounded sand. Approximately 40% fine sand and 60% silt. Collected BRC-SB-08-B-179.5 for grab saturated soil sample.	
							Clayey silt, brown (7.5YR 5/4) moist, very stiff to hard, non plastic to low plasticity fines. Approximately 70% silt and 30% clay.	
							As above except sandy silt. Approximately 30% fine sand and 70% silt.	
							Same as above, some local gypsum. Trace amount of fine sand.	
							Clayey silt, pale brown (10YR 5/3) moist, very stiff to hard, nonplastic to low plasticity fines, trace subangular to subrounded sand. Approximately trace medium sand, 5% fine sand, 80% silt and 15% clay.	
-190							Clayey silt, pale brown (7.5YR 5/4) moist, very stiff to hard, nonplastic to low plasticity fines, trace local gypsum. Approximately trace fine sand, 85% silt and 15% clay.	

Project No. 3850360

Log of Boring: BRC-SB-08-B



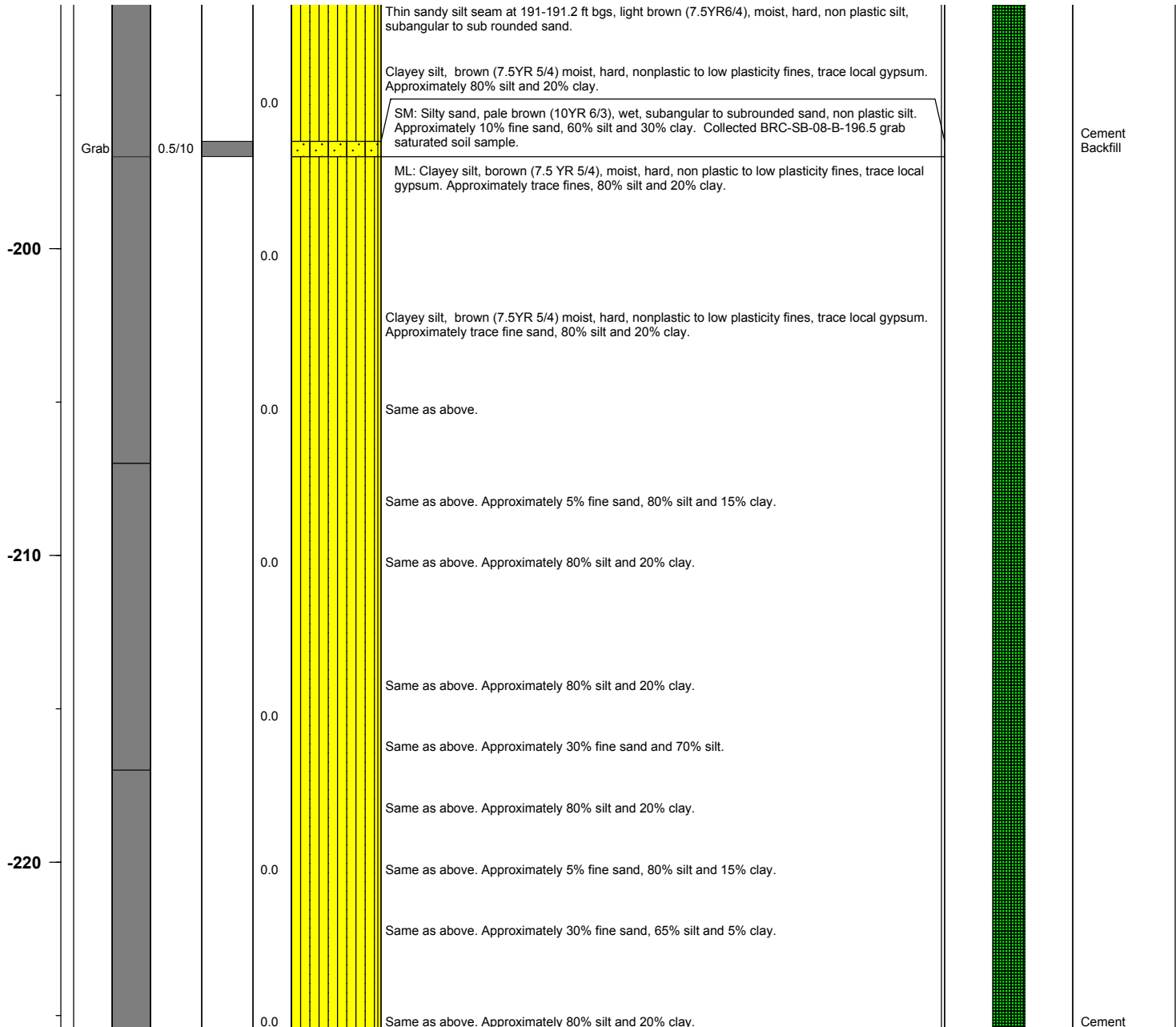
BMI Site - Hydrogeologic Characterization

Henderson, Nevada



Log of Boring No. BRC-SB-08-B

Depth Elevation (MSLD)	Sample Type	Sample Interval	Sample Recovery (feet)	Sample Retained for Analysis	PID	Lithology	Soil Description	Well Construction
---------------------------	-------------	-----------------	---------------------------	---------------------------------	-----	-----------	------------------	-------------------



Project No. 3850360

Log of Boring: BRC-SB-08-B



BMI Site - Hydrogeologic Characterization

Henderson, Nevada



Log of Boring No. BRC-SB-08-B

Depth Elevation (MSLD)	Sample Type	Sample Interval	Sample Recovery (feet)	Sample Retained for Analysis	PID	Lithology	Soil Description	Well Construction
---------------------------	-------------	-----------------	---------------------------	---------------------------------	-----	-----------	------------------	-------------------

-230					0.0		Same as above.	
					0.0		Same as above. Approximately trace fine sand, 80% silt and 20% clay.	
					0.0		Same as above. Approximately 80% silt and 20% clay.	
					0.0		Same as above.	
-240					0.0		Same as above, color change to yellowish brown (10YR5/4).	
					0.0		Same as above, no gypsum. Approximately trace fine sand, 85% silt and 15% clay.	
					0.0		Same as above, pale brown (10YR6/3). Approximately 80% silt and 20% clay.	
-250					0.0		Same as above.	
					0.0		Sandy silt bed at 254.6-255 ft bgs, pale brown (10YR 6/3), moist, nonplastic to very low plasticity silt, subangular to subrounded sand. Approximately 30% fine sand and 70% silt.	
					0.0		Clayey silt, brown (7.5YR 5/4), moist, hard, nonplastic to low plasticity fines. Approximately 80% silt and 20% clay.	
								Backfill

Project No. 3850360

Log of Boring: BRC-SB-08-B



BMI Site - Hydrogeologic Characterization

Henderson, Nevada



Log of Boring No. BRC-SB-08-B

Depth Elevation (MSLD)	Sample Type	Sample Interval	Sample Recovery (feet)	Sample Retained for Analysis	PID	Lithology	Soil Description	Well Construction
---------------------------	-------------	-----------------	---------------------------	---------------------------------	-----	-----------	------------------	-------------------

-260					0.0		Same as above. Trace local gypsum.	
					0.0		Same as above, yellowish brown (10YR5/4). Approximately 75% silt and 25% clay.	
							Same as above.	
							Same as above, pale brown (10YR6/3). Approximately 70% fine sand and 30% silt.	
-270					0.0		Same as above, light brown (7.5YR6/4). Approximately 75% silt and 25% clay.	
					0.0		Same as above, brown (7.5YR5/3). Approximately trace fine sand, 75% silt and 25% clay.	
					0.0		Clayey silt, brown (10YR 5/3), moist, hard, nonplastic to low plasticity fines. Approximately 75% silt and 25% clay.	
-280							Same as above. Approximately 80% silt and 20% clay.	
					0.0		Same as above. Approximately 80% silt and 20% clay.	
							Clayey silt, brown (7.5YR 5/4), moist, hard, non plastic to low plasticity fines, trace local gypsum. Approximately 75% silt and 25% clay.	
-290					0.0		Same as above. Approximately 70% silt and 30% clay.	

Project No. 3850360

Log of Boring: BRC-SB-08-B



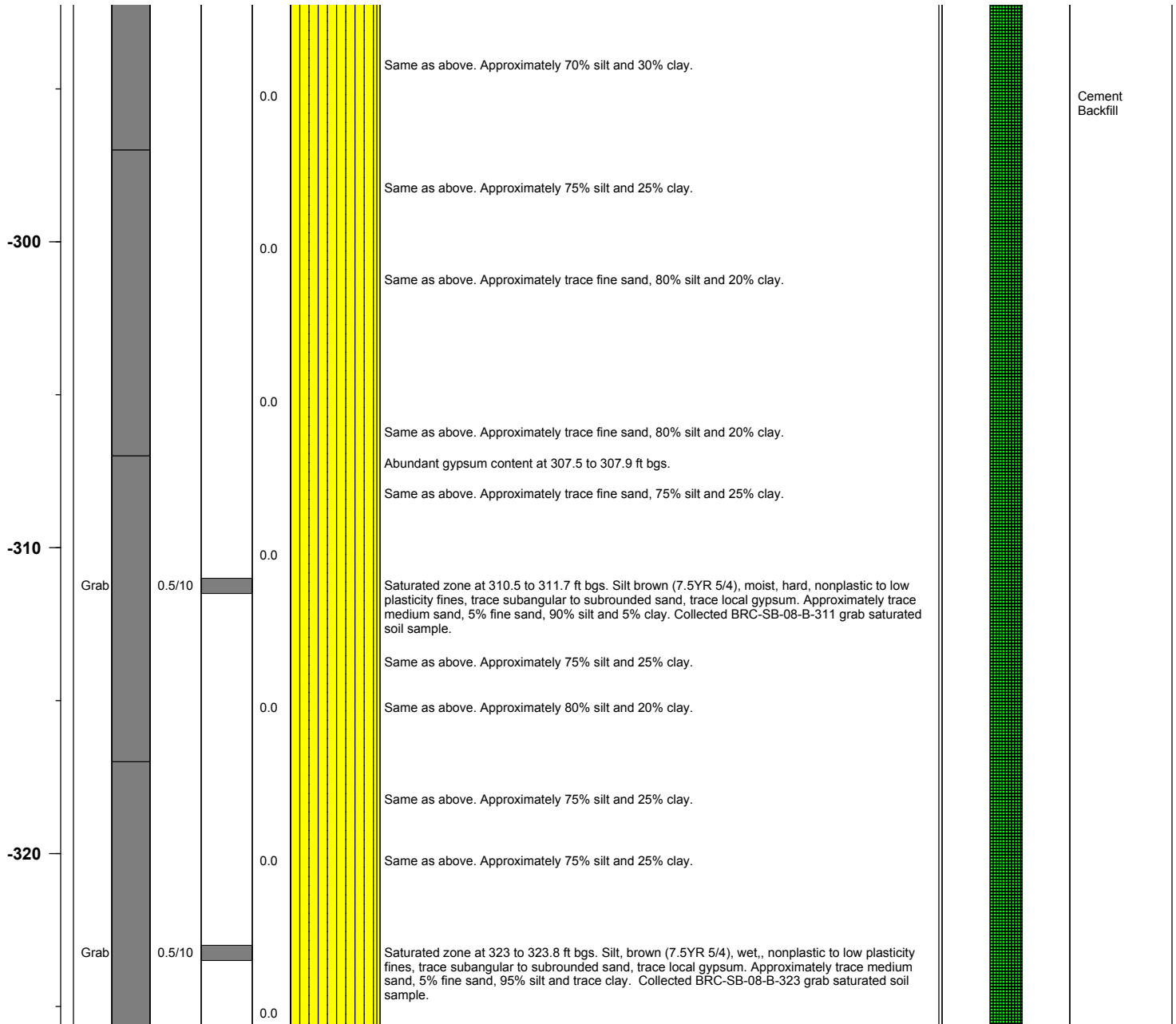
BMI Site - Hydrogeologic Characterization

Henderson, Nevada



Log of Boring No. BRC-SB-08-B

Depth Elevation (MSLD)	Sample Type	Sample Interval	Sample Recovery (feet)	Sample Retained for Analysis	PID	Lithology	Soil Description	Well Construction
---------------------------	-------------	-----------------	---------------------------	---------------------------------	-----	-----------	------------------	-------------------



Project No. 3850360

Log of Boring: BRC-SB-08-B



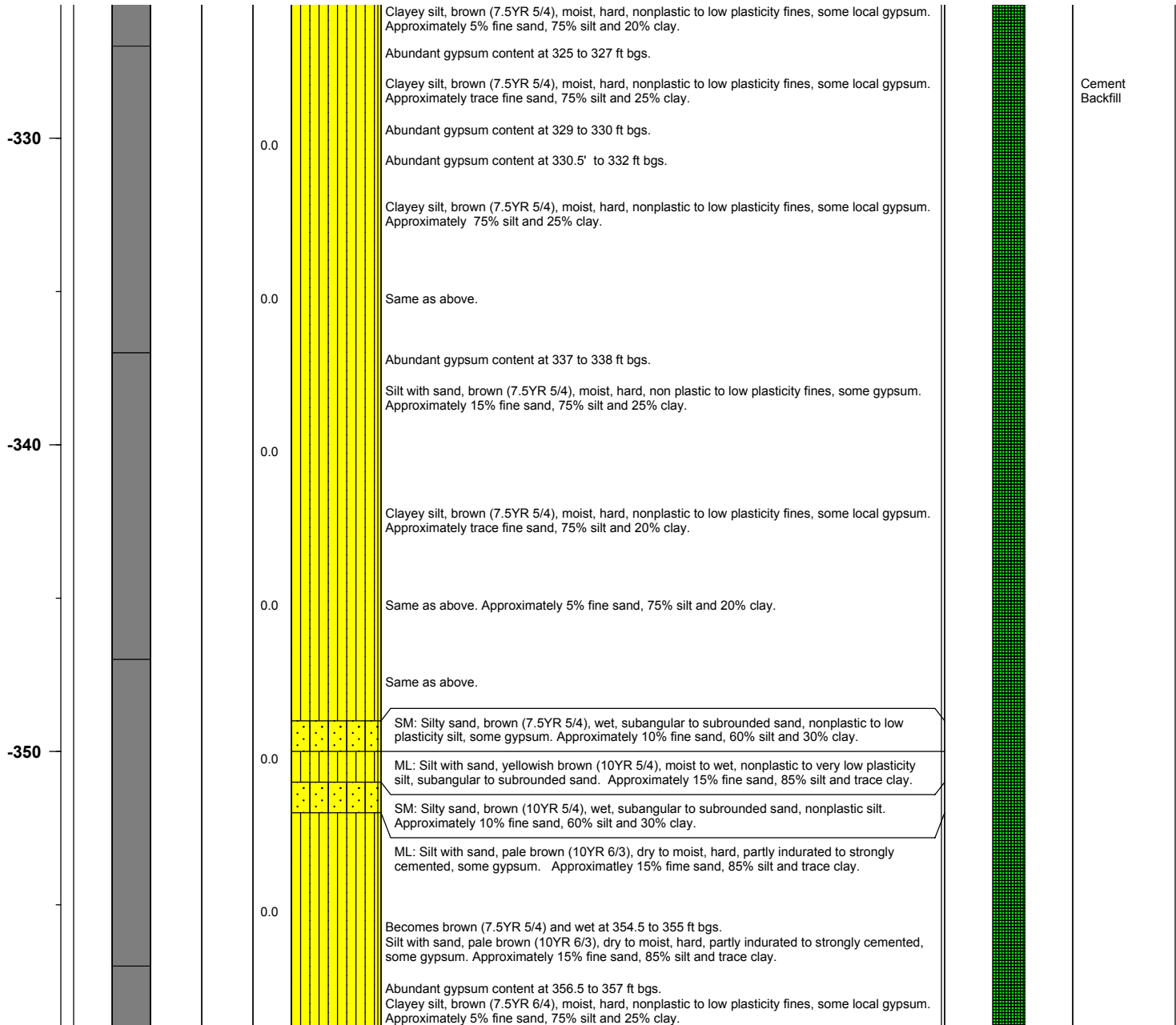
BMI Site - Hydrogeologic Characterization

Henderson, Nevada



Log of Boring No. BRC-SB-08-B

Depth Elevation (MSLD)	Sample Type	Sample Interval	Sample Recovery (feet)	Sample Retained for Analysis	PID	Lithology	Soil Description	Well Construction
---------------------------	-------------	-----------------	---------------------------	---------------------------------	-----	-----------	------------------	-------------------



Project No. 3850360

Log of Boring: BRC-SB-08-B



BMI Site - Hydrogeologic Characterization

Henderson, Nevada



Log of Boring No. BRC-SB-08-B

Depth Elevation (MSLD)	Sample Type	Sample Interval	Sample Recovery (feet)	Sample Retained for Analysis	PID	Lithology	Soil Description	Well Construction
---------------------------	-------------	-----------------	---------------------------	---------------------------------	-----	-----------	------------------	-------------------

-360	Grab	0.5/10			0.0		<p>Same as above. Approximately trace medium sand, 15% fine sand, 60% silt and 15% clay.</p> <p>Same as above, wet. Approx. 5% medium sand, 10% fine sand, 60% silt and 15% clay.</p> <p>Collected sample BRC-SB-08-361.5 for physical analysis.</p> <p>Silt with sand, pale brown (10YR 6/3), dry to moist, hard, nonplastic to very low plasticity fines, partly indurated to strongly cemented, some gypsum. Approximately 15% fine sand, 85% silt and trace clay.</p>	
					0.0			
					0.0		<p>Clayey silt, brown (7.5YR 5/4), moist, hard, non plastic to low plasticity fines, some local gypsum. Approximately 80% silt and 20% clay.</p>	
-370					0.0		<p>Same as above. Approximately 5% fine sand, 75% silt and 20% clay.</p> <p>Abundant gypsum content at 372.7 to 373 ft bgs.</p>	
					0.0		<p>Clayey silt, brown (7.5YR 5/4), moist, hard, nonplastic to low plasticity fines, trace gypsum. Approximately trace fine sand, 75% silt and 25% clay.</p>	
					0.0		<p>Same as above. Approximately trace fine sand, 80% silt and 20% clay.</p>	
-380					0.0		<p>Same as above. Approximately trace fine sand, 80% silt and 20% clay.</p> <p>Silt with sand, brown (7.5YR 5/4), moist, hard, partly indurated to moderately cemented, nonplastic to very low plasticity fines, subangular to subrounded sand, some gypsum. Approximately 5% medium sand, 15% fine sand, 80% silt and trace clay.</p>	
					0.0		<p>Clayey silt, brown (7.5YR 5/4), moist, hard, nonplastic to low plasticity fines, partly indurated to moderately cemented fines, trace gypsum. Approximately 10% fine sand, 75% silt and 25% clay.</p>	
-390					0.0		<p>Saturated zone at 388.5 to 390.5 ft bgs. Silt with sand, brown (7.5YR 5/4), wet,, nonplastic to very low plasticity fines, trace subangular to subrounded sand, local gypsum. Approximately 5% medium sand, 10% fine sand, 80% silt and 5% clay.</p> <p>Clayey silt with sand, brown (7.5YR 5/4), moist, hard, nonplastic to low plasticity fines, angular to subrounded sand, some gypsum to abundant gypsum, partially indurated to moderately cemented. Approximately 5% medium sand, 10% fine sand, 70% silt and 15% clay.</p>	

Project No. 3850360

Log of Boring: BRC-SB-08-B



BMI Site - Hydrogeologic Characterization

Henderson, Nevada



Log of Boring No. BRC-SB-08-B

Depth Elevation (MSLD)	Sample Type	Sample Interval	Sample Recovery (feet)	Sample Retained for Analysis	PID	Lithology	Soil Description	Well Construction
---------------------------	-------------	-----------------	---------------------------	---------------------------------	-----	-----------	------------------	-------------------

-400					0.0		<p>Wet zone at approximately 395 to 395.5 ft bgs.</p> <p>Clayey silt with sand, brown (7.5YR 5/4), moist, hard, nonplastic to low plasticity fines, angular to subrounded sand, some gypsum to abundant gypsum, locally partially indurated. Approximately 5% medium sand, 10% fine sand, 70% silt and 15% clay.</p> <p>Same as above. Approximately 5% fine sand, 75% silt and 20% clay.</p>	<p>Cement Backfill</p>
------	--	--	--	--	-----	--	---	------------------------

Project No. 3850360

Log of Boring: BRC-SB-08-B

