

# Log of Boring No. BRC-SB-10-B

## BMI Site - Hydrogeologic Characterization

### Henderson, Nevada



**Drilling Method:** Rotary Sonic  
**Drilling Equipment:** Rotary Sonic  
**Drilling Contractor:** Prosonic Corporation  
**Driller:** Gerald Sealey

**Borehole Total Depth:** 330 ft bgs  
**Borehole Diameter:** 8.5 in  
**Boring Location:** Location 10 (Well ID: MCF-10B)  
**Depth to Water (ft. bgs):** 19 ft bgs

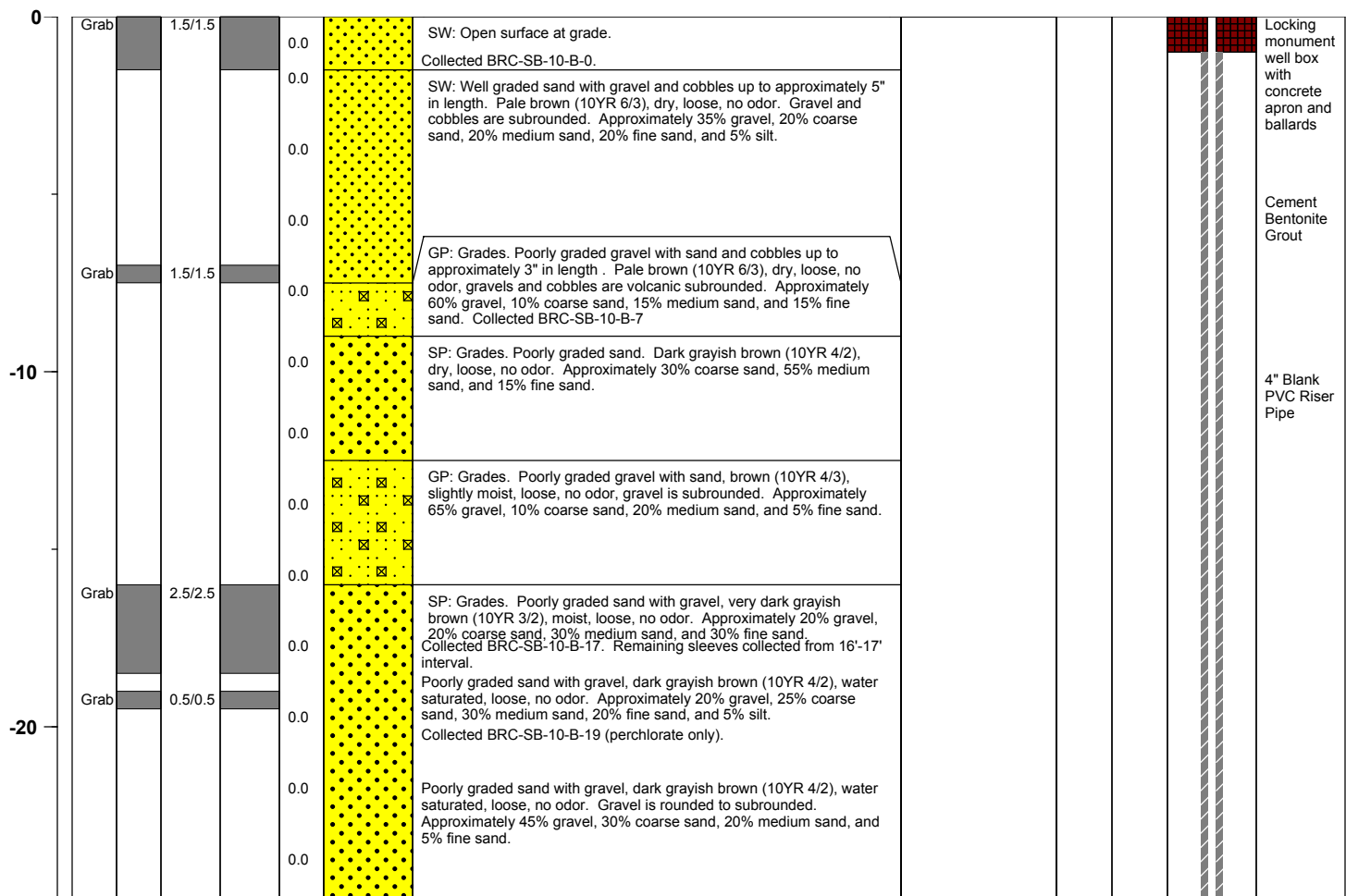
**Sample Type:** Split spoon  
**Sample Interval:** Varies

**Logged By:** David Bean  
**Date Started:** 6/8/04  
**Date Completed:**

#### Monitoring Well Construction

**Type of Surface Seal:** Bentonite Grout  
**Blank Casing Type/Size:** 4" Sch 80 PVC  
**Screen Type/Size:** 4" Sch 80 PVC  
**Transition Sand Type:** N/A  
**Screen Slot Size:** 0.010 in  
**Top of Screen (ft. bgs):** 84 ft bgs  
**Bottom of Screen (ft. bgs):** 104 ft bgs  
**Type of Sand Pack:** #2 x 12

Depth Elevation (BGS)	Sample Type	Sample Interval	Sample Recovery	Sample Retained for Analysis	PID	Lithology	Soil Description	Geophysical Data			Well Construction	
								E-Log		Caliper Log (inch)		Guard Log (OHM.M)
								16" (OHM)	64" (OHM)			



**Project No.** 3850360

**Log of Boring:** BRC-SB-10-B





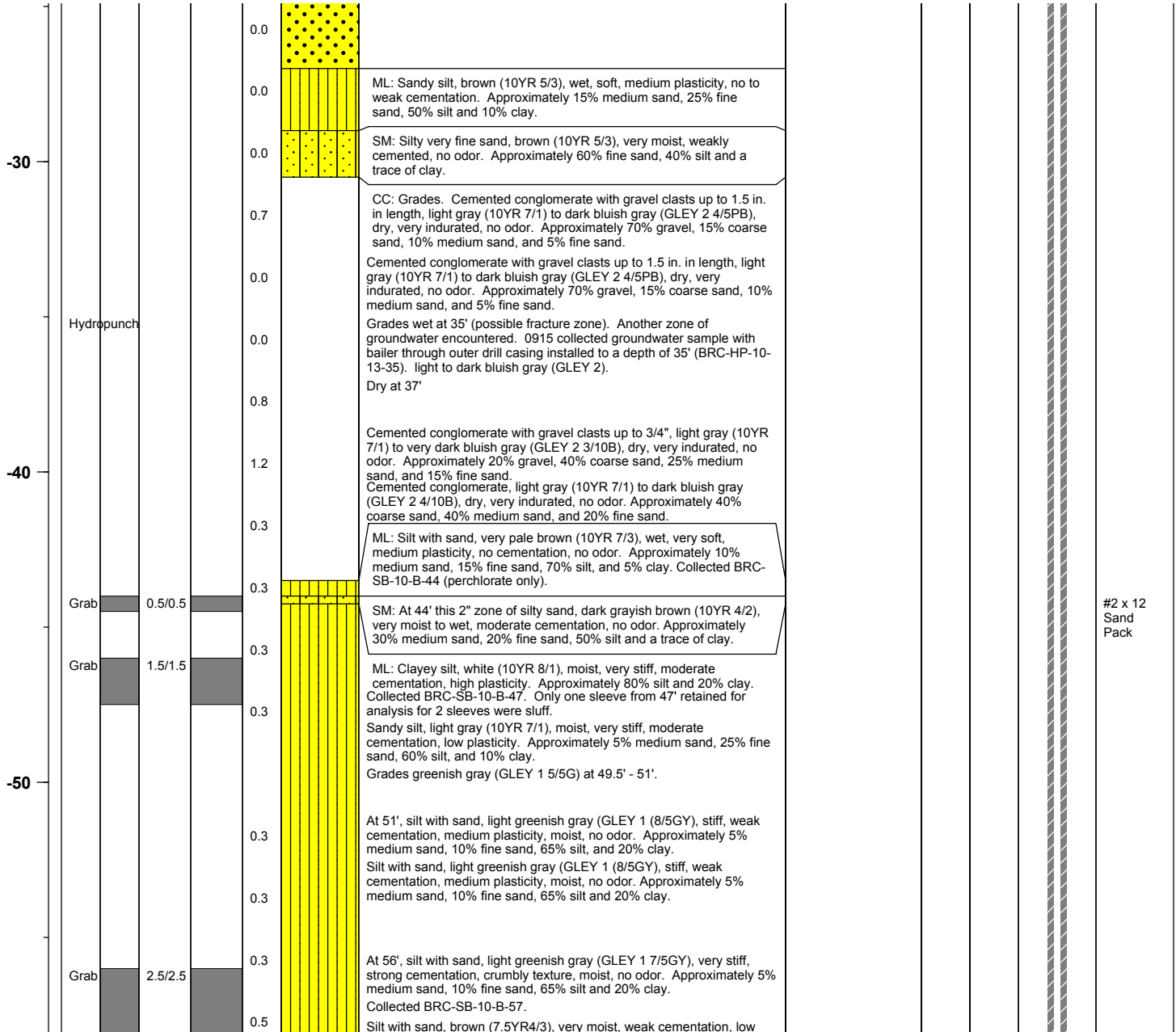
# BMI Site - Hydrogeologic Characterization

Henderson, Nevada



Log of Boring No. BRC-SB-10-B

Depth Elevation (BGS)	Sample Type	Sample Interval	Sample Recovery	Sample Retained for Analysis	PID	Lithology	Soil Description	Geophysical Data			Well Construction	
								E-Log		Caliper Log (inch)		Guard Log (OHM.M)
								16" (OHM)	64" (OHM)	S. PT. (OHM)		



Project No. 3850360

Log of Boring: BRC-SB-10-B





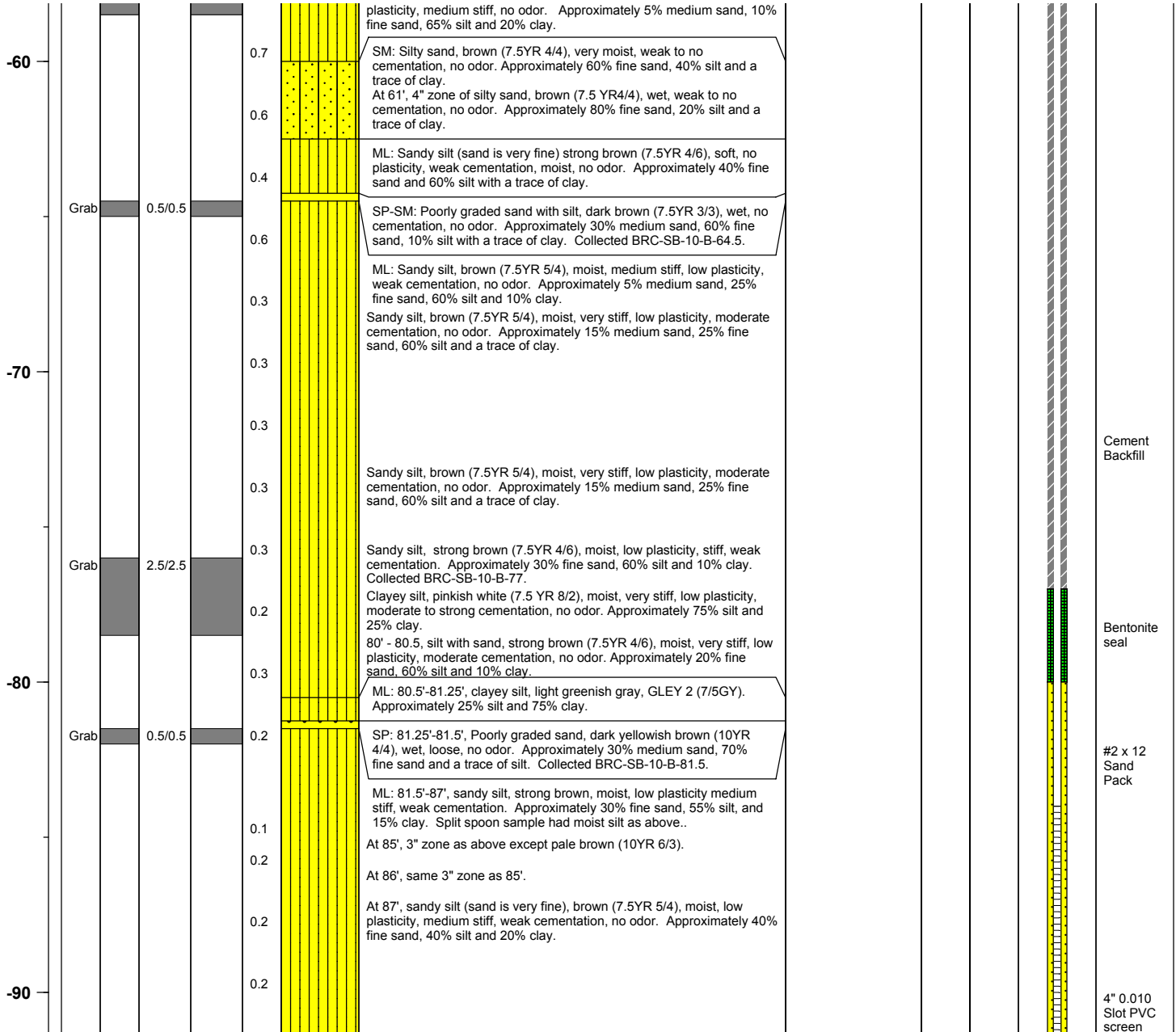
# BMI Site - Hydrogeologic Characterization

Henderson, Nevada



## Log of Boring No. BRC-SB-10-B

Depth Elevation (BGS)	Sample Type	Sample Interval	Sample Recovery	Sample Retained for Analysis	PID	Lithology	Soil Description	Geophysical Data				Well Construction	
								E-Log			Caliper Log (inch)		Guard Log (OHM.M)
								16" (OHM)	64" (OHM)	S. PT. (OHM)			



Project No. 3850360

Log of Boring: BRC-SB-10-B





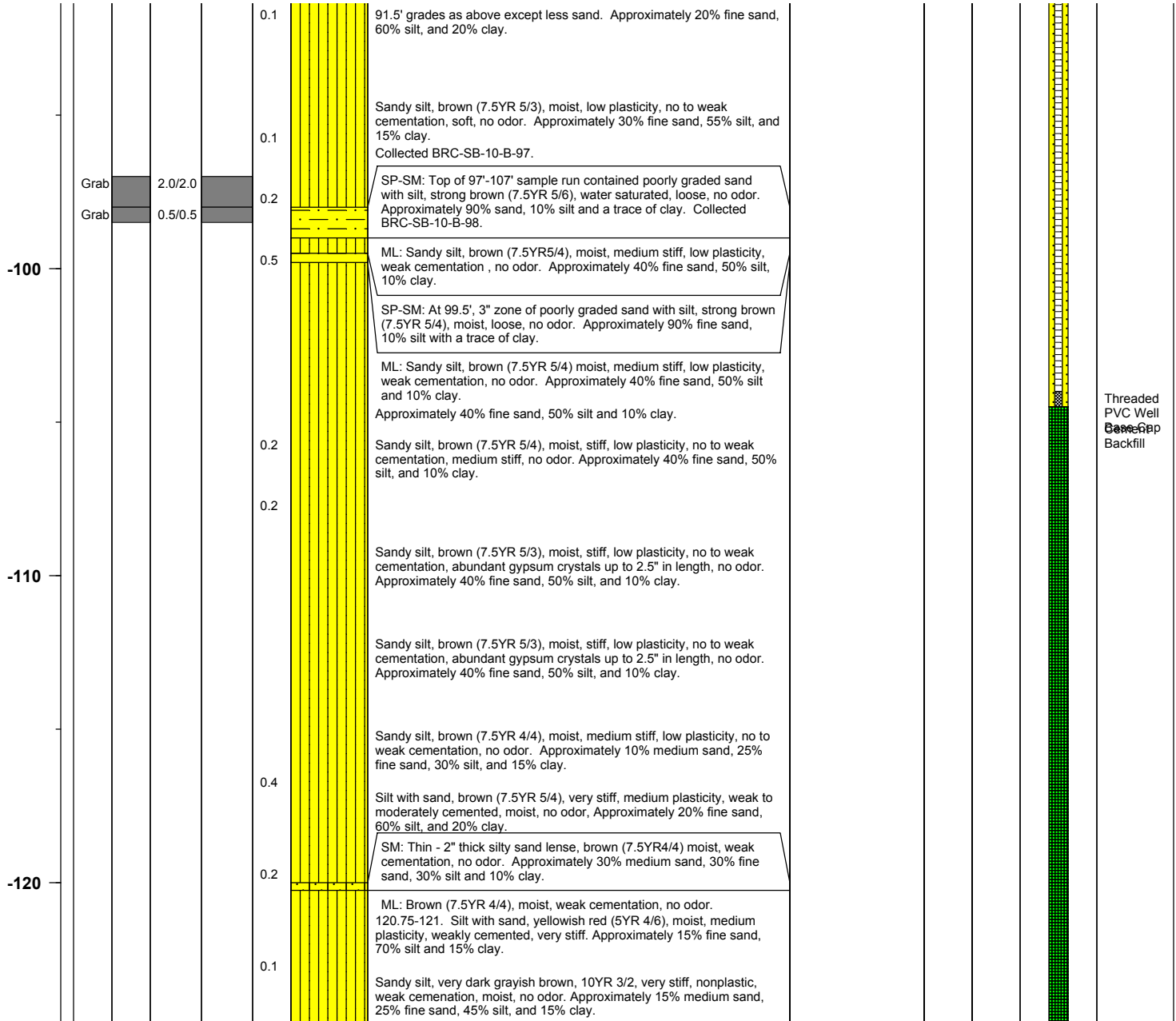
# BMI Site - Hydrogeologic Characterization

Henderson, Nevada



## Log of Boring No. BRC-SB-10-B

Depth Elevation (BGS)	Sample Type	Sample Interval	Sample Recovery	Sample Retained for Analysis	PID	Lithology	Soil Description	Geophysical Data			Well Construction		
								E-Log				Caliper Log (inch)	Guard Log (OHM.M)
								16" (OHM)	64" (OHM)	S. PT. (OHM)			



Project No. 3850360

Log of Boring: BRC-SB-10-B





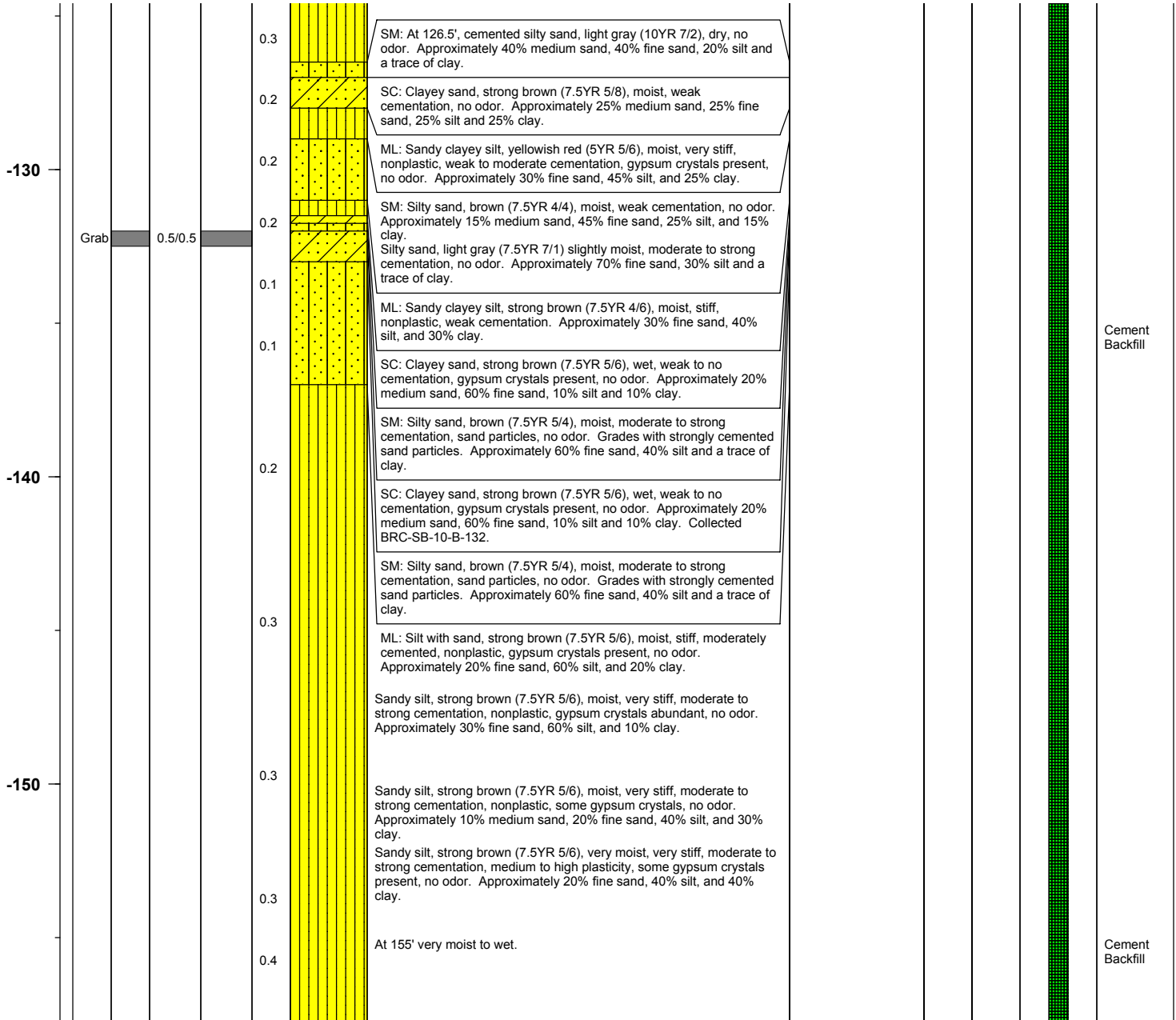
# BMI Site - Hydrogeologic Characterization

Henderson, Nevada



Log of Boring No. BRC-SB-10-B

Depth Elevation (BGS)	Sample Type	Sample Interval	Sample Recovery	Sample Retained for Analysis	PID	Lithology	Soil Description	Geophysical Data			Well Construction	
								E-Log		Caliper Log (inch)		Guard Log (OHM.M)
								16" (OHM)	64" (OHM)			
								S. PT. (OHM)				



Project No. 3850360

Log of Boring: BRC-SB-10-B





# BMI Site - Hydrogeologic Characterization

Henderson, Nevada



Log of Boring No. BRC-SB-10-B

Depth Elevation (BGS)	Sample Type	Sample Interval	Sample Recovery	Sample Retained for Analysis	PID	Lithology	Soil Description	Geophysical Data					Well Construction
								E-Log			Caliper Log (inch)	Guard Log (OHM.M)	
								16" (OHM)	64" (OHM)	S. PT. (OHM)			
160					0.2		Silt with sand, brown (7.5YR 4/4), moist, very stiff, low plasticity, weak cementation, some small gypsum crystals. Approximately 20% fine sand, 55% silt, and 25% clay.						
					0.3		At 164.25', this 1" lense of sandy silt, light gray (7.5YR 7/1), moist, very stiff, moderate cementation, no odor. Approximately 10% medium sand, 20% fine sand, 55% silt, and 15% clay.						
					0.3		Clayey silt, brown (7.5YR 4/4), moist, very stiff, moderate cementation, low plasticity, no odor. Approximately 60% silt, 40% clay and a trace of fine sand.						
170					0.6		Clayey silt, brown (7.5YR 5/3), moist, very stiff, weak cementation, medium plasticity, no odor, small gypsum crystals present. Approximately 80% silt and 20% clay.						
					0.4		Grades. Sandy silt, strong brown (7.5YR 5/6), moist, moderate cementation, nonplastic, very stiff, no odor, some gypsum crystals. Approximately 30% fine sand, 70% silt with a trace of clay. 174-174.5' increased sand content and strongly cemented, moist.						
					0.4		CL: Sandy clay, brown (7.5YR 4/4), moist, medium plasticity, stiff, moderate cementation, no odor, with some gypsum crystals. Approximately 40% fine sand, 30% silt, and 30% clay.						
180					0.4		SM: Silty sand, yellowish red (5YR 4/6), moist, weak cementation, no odor. Approximately 10% medium sand, 50% fine sand, 30% silt, and 10% clay.						
					0.5		At 180', grades strong brown (7.5YR 4/6).						
					0.5		ML: Sandy silt, yellowish red (5YR 4/6), moist, very stiff, moderate to strongly cemented, medium plasticity, no odor. Approximately 10% medium sand, 20% fine sand, 35% silt and 35% clay.						
					0.3		Grades. Sandy silt, brown (7.5YR 4/3), sand is very fine, moist, stiff, weak cementation, low plasticity, no odor. Approximately 30% fine sand, 60% silt, and 10% clay.						
190					0.6		Grades. Silt with sand, brown (7.5YR 4/4), moist, very stiff, low plasticity, weak to moderate cementation, no odor, some small gypsum crvstals present. Approximately 10% medium sand, 15% fine sand,						

Cement  
Backfill

Project No. 3850360

Log of Boring: BRC-SB-10-B





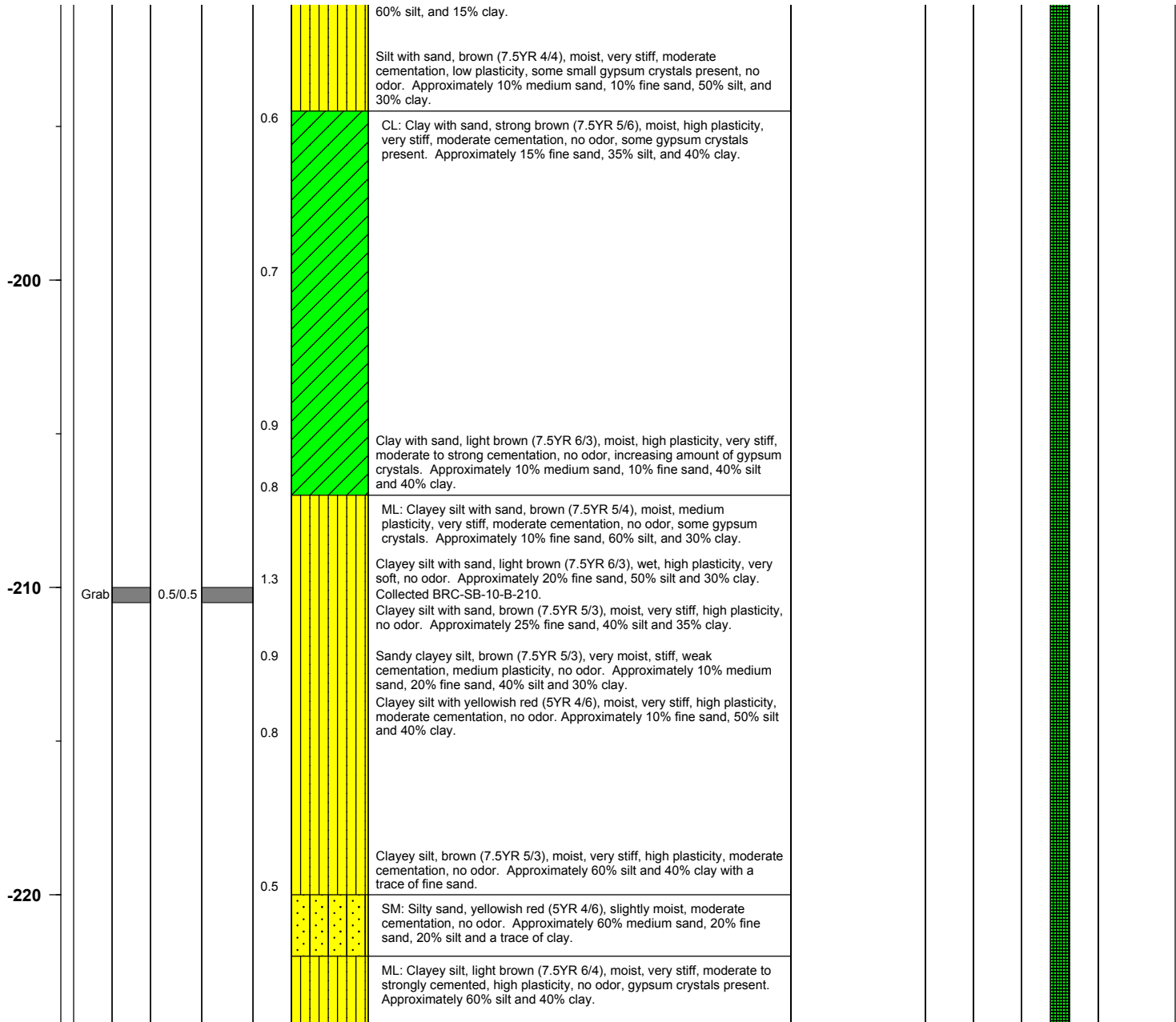
# BMI Site - Hydrogeologic Characterization

Henderson, Nevada



## Log of Boring No. BRC-SB-10-B

Depth Elevation (BGS)	Sample Type	Sample Interval	Sample Recovery	Sample Retained for Analysis	PID	Lithology	Soil Description	Geophysical Data			Well Construction	
								E-Log		Caliper Log (inch)		Guard Log (OHM.M)
								16" (OHM)	64" (OHM)			



Project No. 3850360

Log of Boring: BRC-SB-10-B





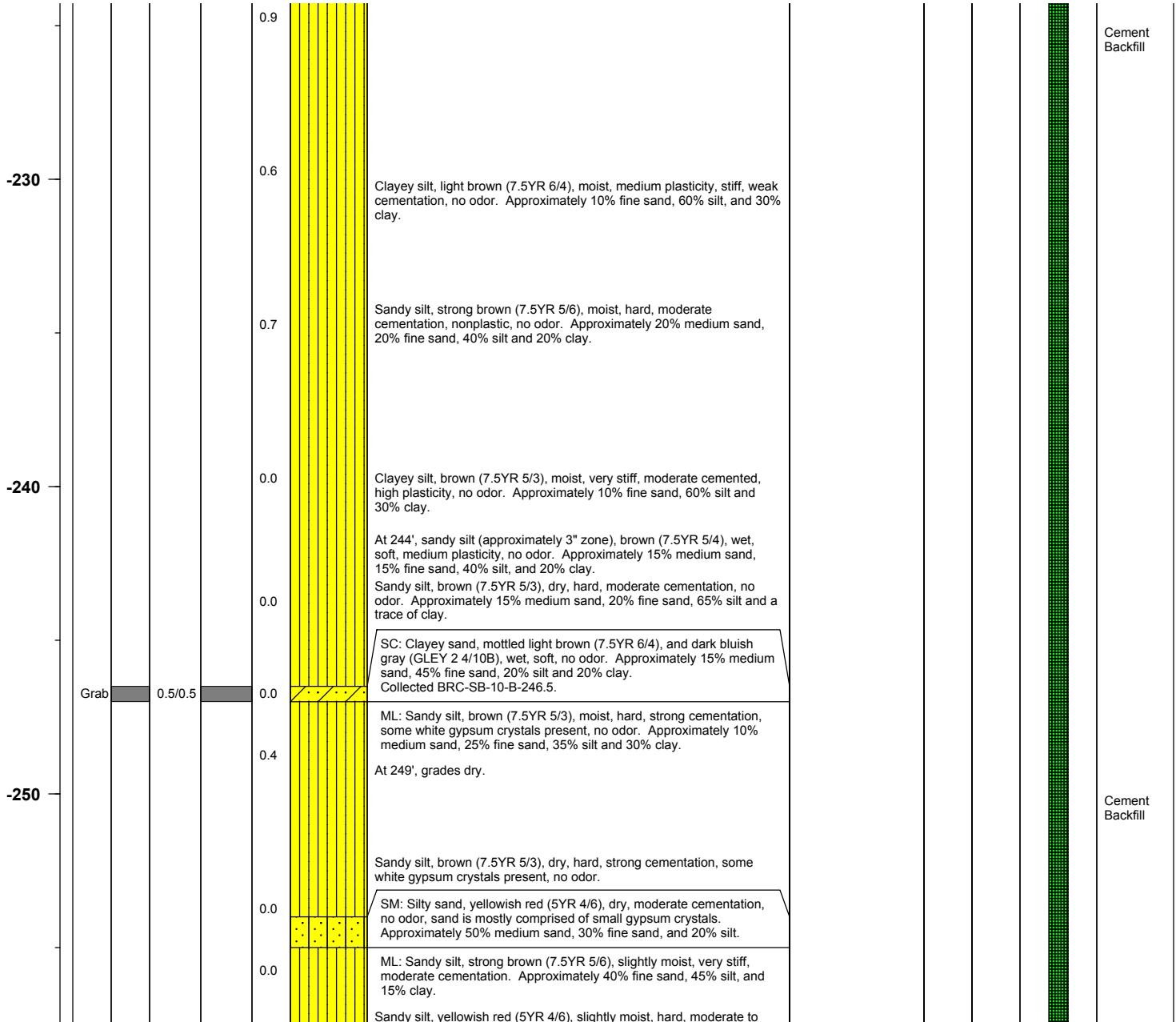
# BMI Site - Hydrogeologic Characterization

Henderson, Nevada



## Log of Boring No. BRC-SB-10-B

Depth Elevation (BGS)	Sample Type	Sample Interval	Sample Recovery	Sample Retained for Analysis	PID	Lithology	Soil Description	Geophysical Data			Well Construction	
								E-Log		Caliper Log (inch)		Guard Log (OHM.M)
								16" (OHM)	64" (OHM)	S. PT. (OHM)		



Project No. 3850360

Log of Boring: BRC-SB-10-B





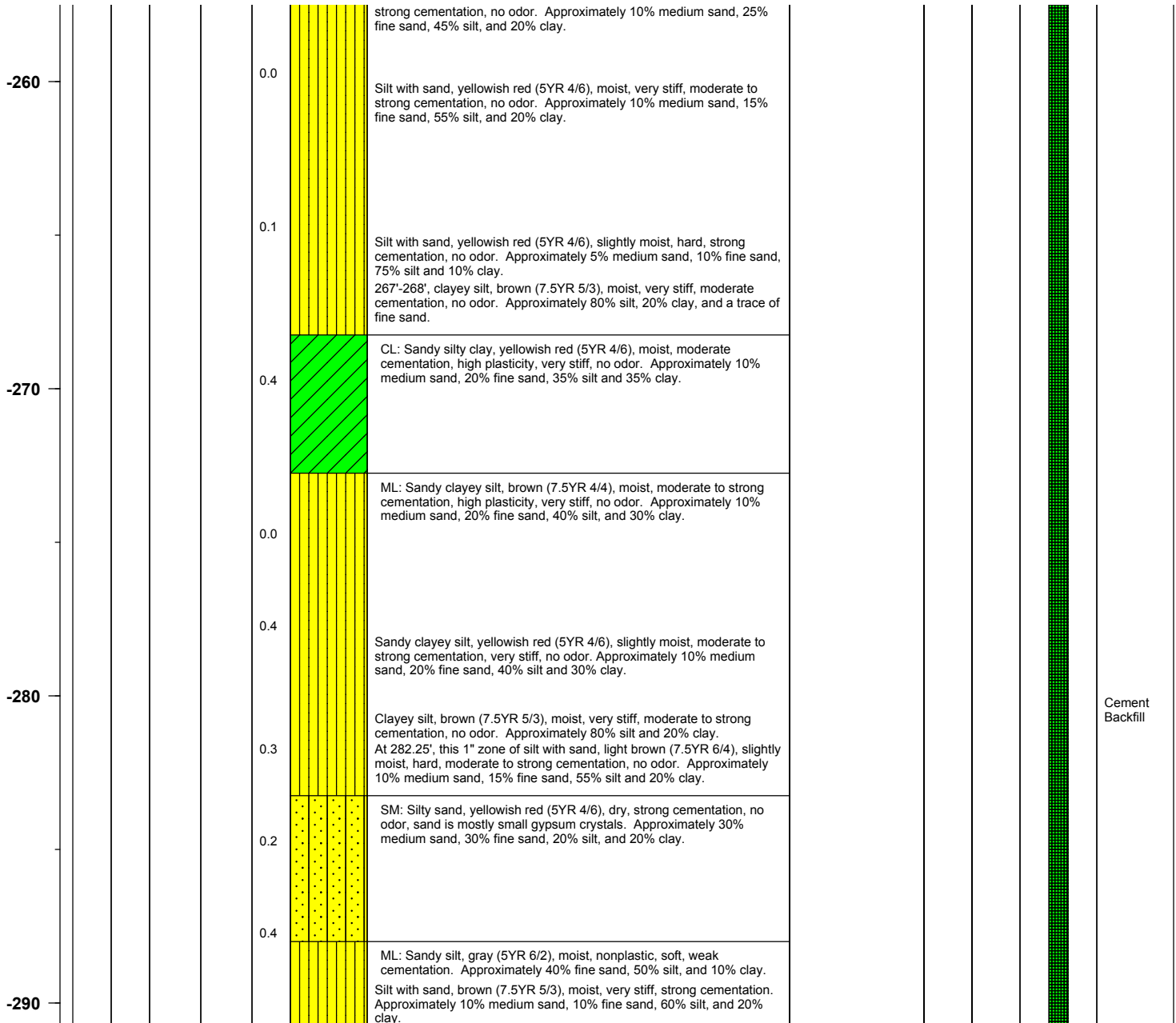
# BMI Site - Hydrogeologic Characterization

Henderson, Nevada



Log of Boring No. BRC-SB-10-B

Depth Elevation (BGS)	Sample Type	Sample Interval	Sample Recovery	Sample Retained for Analysis	PID	Lithology	Soil Description	Geophysical Data				Well Construction
								E-Log			Caliper Log (inch)	
								16" (OHM)	64" (OHM)	S. PT. (OHM)		



Project No. 3850360

Log of Boring: BRC-SB-10-B





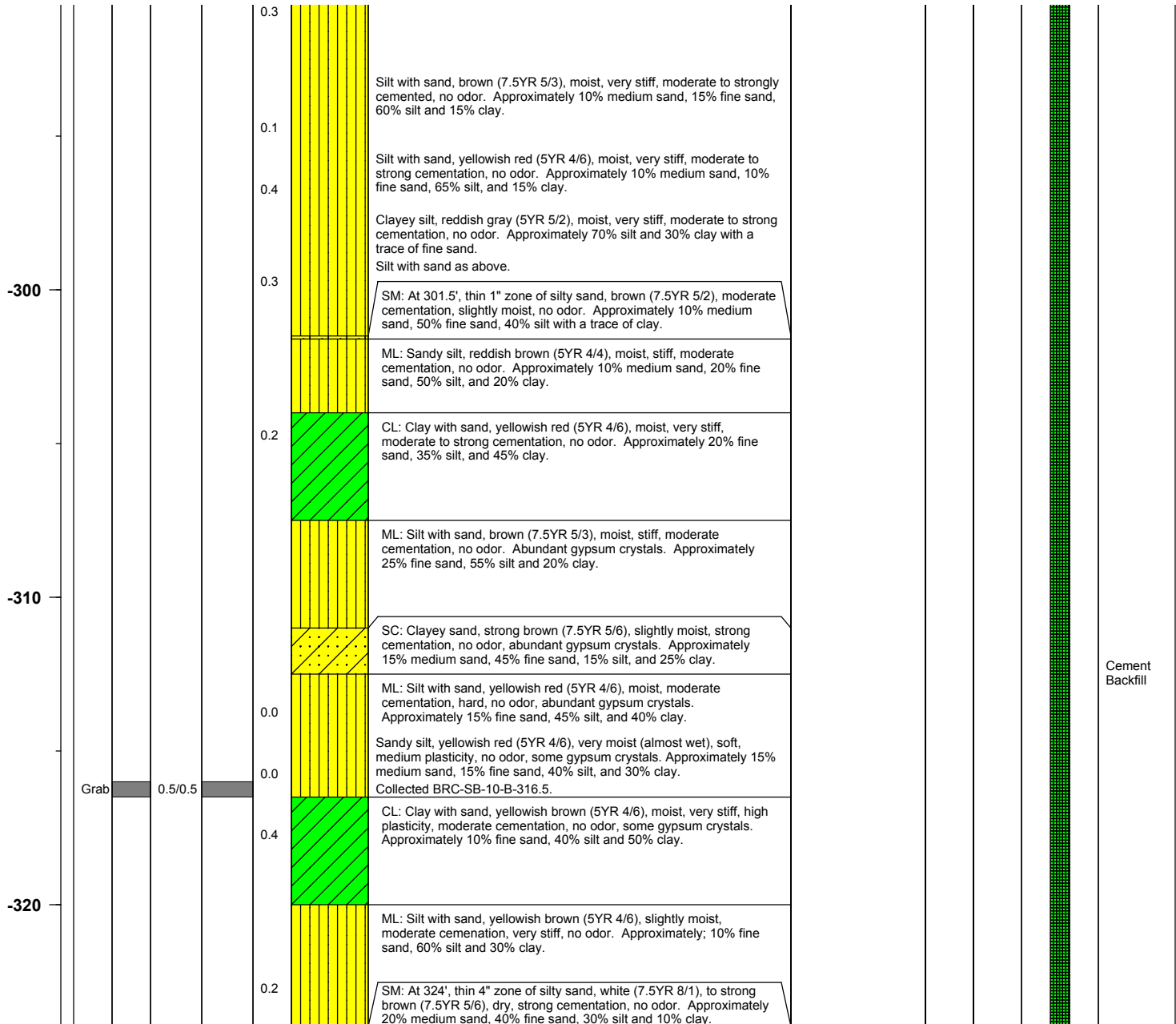
# BMI Site - Hydrogeologic Characterization

Henderson, Nevada



Log of Boring No. BRC-SB-10-B

Depth Elevation (BGS)	Sample Type	Sample Interval	Sample Recovery	Sample Retained for Analysis	PID	Lithology	Soil Description	Geophysical Data			Well Construction	
								E-Log		Caliper Log (inch)		Guard Log (OHM.M)
								16" (OHM)	64" (OHM)			



Project No. 3850360

Log of Boring: BRC-SB-10-B





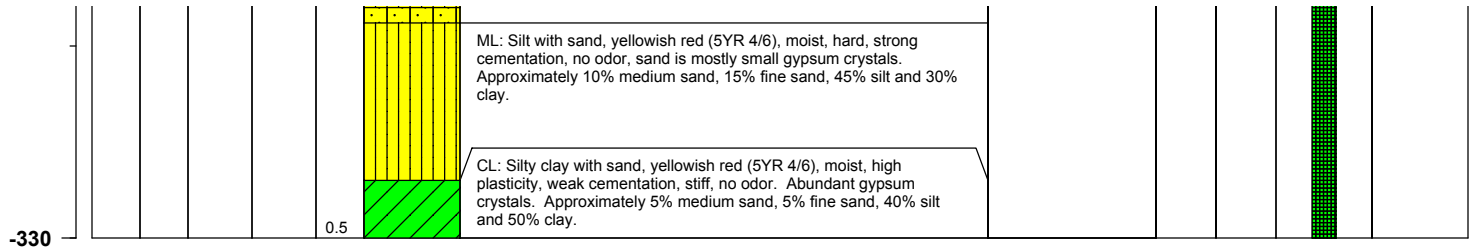
# BMI Site - Hydrogeologic Characterization

Henderson, Nevada



Log of Boring No. BRC-SB-10-B

Depth Elevation (BGS)	Sample Type	Sample Interval	Sample Recovery	Sample Retained for Analysis	PID	Lithology	Soil Description	Geophysical Data				Well Construction	
								E-Log			Caliper Log (inch)		Guard Log (OHM.M)
								16" (OHM)	64" (OHM)	S. PT. (OHM)			
								<div><div></div></div>	<div><div></div></div>	<div><div></div></div>			



Project No. 3850360

Log of Boring: BRC-SB-10-B

