

**Basic Remediation Company**875 West Warm Springs Road  
Henderson, Nevada 89011**DAILY PRODUCTION & QUALITY CONTROL REPORT**

Project No./Contract No.	Project Title / Location	Day of Report	Report No.
6389	BRC Eastside Common Areas Soils Remediation	08-Oct-08	96

**PROJECT POINTS OF CONTACT**

Position	Name	E-Mail-Address	Phone No.
BRC PROJECT MANAGER	Lee Farris, On Site.	lfarris@landwellco.com	702-567-0400
BRC PROJECT MANAGER	Ranajit Sahu	sahuron@earthlink.net	702-567-0400
CONST. PROJECT MANAGER	Dan Brennecke	Dan.Brennecke@westonsolutions.c	970-260-5886
Construction Manager	Richard Laubinger	Richard.Laubinger@westonsolution	720-641-8660

**WEATHER CONDITIONS**

Conditions				Temp (F)		Wind		Add'l Readings	
AM	Sunny/Clear	PM	Sunny/Clear	Low	63			Precip. (in/hr)	
				High	90	NNE	8mph	Humidity (%)	

Additional Weather Comments

AM 0 -5 mph from the East, PM, Winds 5- 10 mph from the Northeast.

**ON-SITE WESTON PERSONNEL**

Name	Position	Trade / Work Performed	Y/N	
Dick Laubinger	Construction Manager	Construction Management Services.	Y	
Dan Brennecke	Project Manager, CM	Construction Management Services.	Y	
Dave Goertz	Project Engineer	Construction Management Services.	Y	
Richard Davis	Project Engineer	Construction Management Services.	Y	
Chris White	Assist. Const. Mgr	Construction Management Services.	Y	
	Assist. Const. Mgr	Construction Management Services.		
June Laubinger	Admin Assistant	Construction Management Services.	Y	

**ON-SITE GEOSYNTEC PERSONNEL**

Name	Position	Trade / Work Performed	Y/N	
Greg Corcoran	Design Engineer	Oversight	Y	
Dan Street	QA Manager	Oversight	Y	
Jim Cox	QA/QC Supervisor	Oversight	N	
Robecca Flynn	Engineer	Oversight	N	
Wayne Wofford	QA/QC Tech	Oversight	Y	
Brent Barbacane	QA/QC Tech	Oversight	Y	

**ON-SITE SUPPORT PERSONNEL**

Name	Position	Trade / Work Performed	Y/N	
Doug Herlocker, Tetra Tech	Air Monitoring Specialist	Air Monitoring.	N	
Becky Dano, Tetra Tech	Air Monitoring Specialist	Air Monitoring.	Y	
Jerry Fauchaux, Tetra Tech	Air Monitoring Specialist	Air Monitoring	N	

**OVERSITE PERSONNEL**

Name	Position	Trade / Work Performed	Y/N	
Scott McKeag, McGinley	Oversight	For NDEP	N	
Devin Gordon, McGinley	Oversight	For NDEP	Y	
Dock Kim, ATC	Field Observation	For AIG	Y	
Ron Perry, ASW	Inspector	Liner Inspector	N	
PBS&J, Survey	Surveyors	Surveying, QA	N	
Brian Rakvica	Inspector	NDEP	N	

**ON-SITE CONTRACTOR PERSONNEL**

Name	Company	Trade / Work Performed	Y/N	
Erik Geringer	Entact	Project Manager	Y	
Josh Carrol	Entact	Asst Project Manager	Y	
Russ Karnes	Entact	Eastside, Superintendent	Y	
Michael Carlson	Entact	Engineer	Y	
Joe Curilla	Entact	Health & Safety Officer	Y	
Timothy Stadt	Entact	Health and Safety Technician	Y	
	Entact	26 Equipment Operators & Truck Drivers	Y	
Ed Long	Entact	CAMU, Superintendent	Y	
Adam Calveledge	Entact	Health & Safety Officer	Y	
			Y	
Rick McIntire	Entact	CSP, Safety	N	
	American Asphalt	1 Equipment operators	Y	
	American Asphalt	1 Superintendent	Y	
	Environmental Specialties, Inc	Liner Superintendent	N	

## DAILY PRODUCTION & QUALITY CONTROL REPORT

Project No./Contract No.	Project Title / Location	Day of Report	Report No.
6389	BRC Eastside Common Areas Soils Remediation	08-Oct-08	96

	Environmental Specialties, Inc	Laborers/ Seamers	N	
	Kenney Survey	CAMU	Y	
	ABC Survey	Eastside/CAMU	Y	

### ON-SITE EQUIPMENT

Equipment	Vendor / Tag No.	Work Performed				
CAT D400E Dump Truck (2)		CAMU	-	-	-	-
JD D400 Dump Trucks (6)		Eastside		-	-	-
CAT 324D long stick excavator		CAMU	-	-	-	-
CAT D8R Dozer with disc		Eastside		-	-	-
CAT 345 excavator		Eastside		-	-	-
CAT 330 Excavator		Eastside		-	-	-
Case double pan scrapers.		Eastside		-	-	-
CAT D6 LGP Dozer (2)		Eastside				-
Water Trucks (2)		Eastside				-
637/631 Cat Scrapers (6)		CAMU				-
CAT 16H Grader		CAMU				-
CAT D-10 Dozer		CAMU				-
CAT Water Wagon		CAMU				-
CAT D-6 Dozer		CAMU				-
CAT 14H Grader		CAMU				-
Gradall		CAMU				-
JLG		CAMU				-
IR Smooth drum Roller		Eastside and CAMU				-
Tenent Street Sweeper		Eastside and CAMU				-
						-
						-
						-

### MATERIAL HANDLING (ON-SITE DELIVERY / REMOVAL)

Material	Vendor	QTY	UOM	Purpose	Delivery Verification			
					Condn	Qty	Spec	Tags
GCL	CETCO	0	rolls	For CAMU				
Geocomposite	Agru	0	rolls	For CAMU				
Geomembrane	Agru	0	rolls	For CAMU				

### WORK COMPLETED

*Description of Work Executed Today*

#### Eastside Mixing and Drying Activity:

- Loaded out prepared soils from the dry ponds with CAT 324 long stick excavator (2) trucks hauled 22 loads @ 20 cy/load = 484 cy. Hauled to beta ditch stockpile.
- D6 and D6N dozers pushed up prepared material on dry ponds.
- D8 dozer and disk working wet material previously placed at dry ponds.
- Tractor and pans - 0 loads @ 30 cy/loads = 0 cy idle.
- Watered haul Rds and Maintained them with (2), 4,000 gal Water trucks and (1), 14H Motorgrader.
- Continued pumping water from SC-1 to SW-12.
- 324 CAT Longstick excavator loaded dry waste material from SC-1 and SW-7 berm and hauled to beta ditch. 10 loads to beta ditch.
- D6N pushed up prepared material on dry ponds. Continued.
- Conducted dust monitoring.
- Sewer alignment material scraped and loaded out with a Kobelco 210 excavator, 9 loads @ 22cy/load = 198 cy. Hauled to beta ditch with (1) haul truck.

#### CAMU Activity:

##### **Excavation .**

- Continued screening 6" minus material for future cover soil and engineered fill.
- Phase II continued screening soils and placing lifts on floor.
- Western ditch soils hauled into Phase 1. 185 loads @ 22 cy/loads = 4,070 cy (3) truck.
- D6 dozer spread western ditch soils in Phase 1.

##### **Embankment**

- Phase 1 embankment, complete.
- Phase 1 estimated cumulative embankment placed: 0 cy

##### **Waste Placement**

- Phase 1 estimated daily waste placed: 185 loads @ 22cy/load = 4,070 cy
- Phase 1 estimated cumulative waste placed: 25,996 cy. Western Ditch Soils.
- Phase 1 Operations Layer placed. completed. Cumulative total: 21,662

##### **Geosynthetics.** Estimated cumulative installed quantity by Phase.

- Phase 1 GCL placed: 0 sf daily, 307,372 sf cumulative.
- Phase 1 Geomembrane: 0 sf daily, 307,372 sf cumulative
- Phase 1 Geocomposite: 0 sf daily, 307,372 sf cumulative.
- Phase 1 Geotextile: (0) sf daily. 69,340 sf cumulative.



## DAILY PRODUCTION & QUALITY CONTROL REPORT

Project No./Contract No.	Project Title / Location	Day of Report	Report No.
6389	BRC Eastside Common Areas Soils Remediation	08-Oct-08	96

**Other:** Work performed at Office Trailers: Electrician continued working on permanent power.

Eastside: Sewer alignment rescraping. GES on site and took samples of areas completed, Will return 10-9-08 to sample final areas.

HEALTH & SAFETY	
-----------------	--

Description of Health & Safety Actions Taken Today / Safety Inspections Conducted	

### Entact H&S Tailgates

Safety Topic Eastside: Zero incident injury policy. Discussed City Center accident/incident rates.

Safety Topic CAMU: Zero incident/injury policy. Discussed City Center accident/incident rates.

**Safety Incidents:** None.

## CONSTRUCTION QUALITY ASSURANCE & QUALITY CONTROL

Description of Quality Control Actions Taken Today / Quality Inspections Conducted	
1	2
3	4
5	6
7	8
9	10
11	12
13	14
15	16
17	18
19	20
21	22
23	24
25	26
27	28
29	30
31	32
33	34
35	36
37	38
39	40
41	42
43	44
45	46
47	48
49	50
51	52
53	54
55	56
57	58
59	60
61	62
63	64
65	66
67	68
69	70
71	72
73	74
75	76
77	78
79	80
81	82
83	84
85	86
87	88
89	90
91	92
93	94
95	96
97	98
99	100

Daily CQA Summary..

Monitored site haul road maintenance and construction of new 12" capped haul roads.

Monitored screening of native soils and placement of soils in Phase II.

Provide oversight at the CAMU regarding screening of native soils at the site stockpiles for the production of engineered fill.

Monitored western ditch soils placement.

Continue to establish an onsite soil laboratory at the Eastside.

Continue updating project documents and database to facilitate reporting.

Continue testing of Beta ditch stockpile samples.

### ISSUES AND/OR ITEMS OF DISCUSSION

---

Discussion of Issues / Concerns / Conversations / Topics

Major Construction Activity Meeting held at BRC field trailer. Included. Night hauling, decontamination and waste placement.

## SITE VISITORS

[illegible]

Report Prepared By / Title	Date Prepared	Signature
----------------------------	---------------	-----------

Dick Laubinger, Construction Manager 8-Oct-08

Report Prepared By / Title	Date Prepared	Signature
----------------------------	---------------	-----------

Dick Laubinger, Construction Manager 8-Oct-08

Report Prepared By / Title	Date Prepared	Signature
----------------------------	---------------	-----------

# Basic Remediation Company

875 West Warm Springs Road  
Henderson, Nevada 89011

## DAILY PRODUCTION & QUALITY CONTROL REPORT

Project No./Contract No.	Project Title / Location	Day of Report	Report No.
6389 0	BRC Eastside Common Areas Soils Remediation 0	08-Oct-08	96

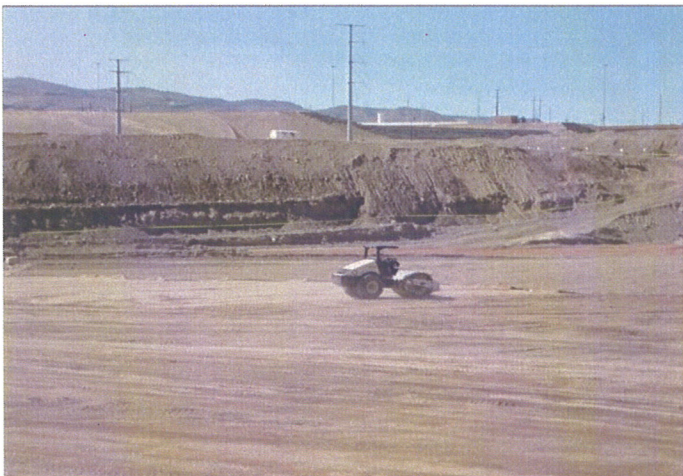
### DAILY PHOTO LOG

Photo 1



CAMU: Phase 1 waste placement in process..

Photo 2



CAMU: Phase 1 compacting waste with roller.

Photo 3



CAMU: Phase IIIA, mass excavation.

Photo 4



CAMU: Phase 1, Western Ditch soils placement.