

DAILY PRODUCTION & QUALITY CONTROL REPORT

Project No./Contract No.	Project Title / Location	Day of Report	Report No.
6389	BRC Eastside Common Areas Soils Remediation	21-Nov-08	138

PROJECT POINTS OF CONTACT

Position	Name	E-Mail Address	Phone No.
BRC PROJECT MANAGER	Lee Farris	lfarris@landwellco.com	702-567-0400
BRC PROJECT MANAGER	Ranajit Sahu	sahuron@earthlink.net	702-567-0400
CONST. PROJECT MANAGER	Dan Brennecke	Dan.Brennecke@westonsolutions.c	970-260-5886
Construction Manager	Richard Laubinger	Richard.Laubinger@westonsolution	720-641-8660

WEATHER CONDITIONS

Conditions		Temp (F)	Wind	Add'l Readings	
AM	Sunny/Clear	Low 44		Precip. (in/Day)	
PM	Sunny / Partly Cloudy	High 70	NE 5mph	Humidity (%)	
Additional Weather Comments 0 mph, in AM. Light Winds in PM.					

ON-SITE WESTON PERSONNEL

Name	Position	Trade / Work Performed	Y/N
Dick Laubinger	Construction Manager	Construction Management Services.	Y
Dan Brennecke	Project Manager, CM	Construction Management Services.	N
Richard Davis	Project Engineer	Construction Management Services.	Y
Chris White	Assist. Const. Mgr	Construction Management Services.	Y
Wayne Hodgson	Assist. Const. Mgr	Construction Management Services.	Y
Kevin Cooke	Assist. Const. Mgr	Construction Management Services.	Y
June Laubinger	Admin Assistant	Construction Management Services.	Y

ON-SITE GEOSYNTEC PERSONNEL

Name	Position	Trade / Work Performed	Y/N
Greg Corcoran	Design Engineer	Oversight	N
Dan Street	QA Manager	Oversight	Y
Jim Cox	QA/QC Supervisor	Oversight	N
Robecca Flynn	Engineer	Oversight	N
Wayne Wofford	QA/QC Tech	Oversight	Y
Brent Barbacane	QA/QC Tech	Oversight	Y
Camon Liddell	QA/QC Tech	Oversight	Y
Jeremy Osborn	QA/QC Tech	Oversight	Y
Roland Derosier	QA/QC Tech	Oversight	Y

ON-SITE SUPPORT PERSONNEL

Name	Position	Trade / Work Performed	Y/N
Doug Herlocker, Tetra Tech	Air Monitoring Specialist	Air Monitoring.	N
Becky Dano, Tetra Tech	Air Monitoring Specialist	Air Monitoring.	Y
Jerry Fauchaux, Tetra Tech	Air Monitoring Specialist	Air Monitoring	N

OVERSITE PERSONNEL

Name	Position	Trade / Work Performed	Y/N
Mark Eizman, ASW	Inspector	Liner Inspector	Y
Devin Gordon, McGinley	Oversight	For NDEP	Y
Dock Kim, ATC	Field Observation	For AIG	Y
Joe Ludlow, ASW	Inspector	Liner Inspector	N
Steve Morrow, ASW	Inspector	Liner Inspector	N
Brian Rakvica	Inspector	NDEP	Y
PBS&J, Survey	Surveyors	Surveying, QA	N

ON-SITE CONTRACTOR PERSONNEL

Name	Company	Trade / Work Performed	Y/N
Erik Geringer	Entact	Project Manager	Y
Josh Carrol	Entact	Asst Project Manager	Y
Russ Karnes	Entact	Eastside, Superintendent	Y
Michael Carlson	Entact	Engineer	Y
Joe Curilla	Entact	Health & Safety Officer	Y
Timothy Stadt	Entact	Health and Safety Technician	Y
	Entact	26 Equipment Operators & Truck Drivers	Y
Ed Long	Entact	CAMU, Superintendent	Y
Lance Bruce	Entact	Health & Safety Officer	Y
Terry Harper	Entact	CAMU, Superintendent	Y
Rick McIntire	Entact	CSP, Safety	N
Dale Walsh	Converse	CSP, Safety	N

DAILY PRODUCTION & QUALITY CONTROL REPORT

Project No./Contract No.	Project Title / Location	Day of Report	Report No.
6389	BRC Eastside Common Areas Soils Remediation	21-Nov-08	138

	Environmental Specialties, Inc	1 Liner Superintendent	Y	
	Environmental Specialties, Inc	12 Laborers/ Seamers	Y	
	Kenney Survey	CAMU	N	
	ABC Survey	Eastside/CAMU	Y	

ON-SITE EQUIPMENT

Equipment	Vendor / Tag No.	Work Performed				
CAT D400E Dump Truck (2)		CAMU	-	-	-	-
JD D400 Dump Trucks (8)		Eastside	-	-	-	-
CAT 324D long stick excavator		CAMU	-	-	-	-
CAT D8R Dozer with disc		Eastside	-	-	-	-
CAT 345 excavator		Eastside	-	-	-	-
CAT 330 Excavator		Eastside	-	-	-	-
Case double pan scrapers.		Eastside	-	-	-	-
CAT D6 LGP Dozer (2)		Eastside				-
Water Trucks (2)		Eastside				-
637/631 Cat Scrapers (6)		CAMU				-
CAT 16H Grader		CAMU				-
CAT D-10 Dozer		CAMU				-
CAT Water Wagon		CAMU				-
CAT D-6 Dozer		CAMU				-
CAT 14H Grader		CAMU				-
Gradall		CAMU				-
JLG		CAMU				-
IR Smooth drum Roller		CAMU, Phase 1				-
Tenent Street Sweeper		Eastside and CAMU				-
Bomag Smooth drum Roller		CAMU, Phase 1				-
						-
						-
						-
						-

MATERIAL HANDLING (ON-SITE DELIVERY / REMOVAL)

Material	Vendor	Today	UOM	Purpose	Delivery Verification			
					to date	Qty	Spec	Tags
GCL	CETCO	0	rolls	For CAMU, On site		495		
Geocomposite	Agru	0	rolls	For CAMU, On site		464		
Geomembrane	Agru	22	rolls	For CAMU, On site		192		

WORK COMPLETED

Description of Work Executed Today

Eastside Mixing and Drying Activity:

- Day Shift:
- Continue screening, moisture conditioned soils using powerscreener in PUB-3.
- Operating sprinkler system on PUB-4 and PUC-4
- Worked on tarps and rails for haul trucks.
- Prepare area for night operations.

- Night Shift:
- Hauled 1" minus material to Phase II for operations layer.

CAMU Activity:

Excavation

- Day Shift:
- ESI continued placing geocomposite in Phase II.
- Continued shaping Phase II east slope and remaining portion of western ditch floor.
- Excepted delivery and unloaded geosynthetics.
- Hauled screened 6" minus material to NE Basin.
- Prepared for night haul operations.

- Night Shift:
- Continued placing 1" minus screened operations layer in Phase II.

Embankment

- Phase 1 embankment, complete.
- Phase 1 estimated cumulative embankment placed: 0 cy

Waste Placement

- Phase 1 estimated daily waste placed: 0 loads @ 20cy/load = 0 cy.
- night shift placed: 0 loads @ 20cy/load = 0 cy.
- Phase 1 estimated cumulative waste placed: 199,838 cy. Western Ditch, NE Equilization, Eastside beta stockpile and PUA-4.PUB-3.
- Phase 1 Operations Layer placed, completed. Cumulative total: 21,662
- Phase 2 estimated night shift placed: 202 loads @ 20cy/load = 4,040 cy. (13 trucks hauling).
- Phase 2 Operations Layer placed, daily: 4,040 cy. Cumulative total: 8,120 cy.

DAILY PRODUCTION & QUALITY CONTROL REPORT

Project No./Contract No.	Project Title / Location	Day of Report	Report No.
6389	BRC Eastside Common Areas Soils Remediation	21-Nov-08	138

Geosynthetics. Estimated cumulative installed quantity by Phase.

- Phase 1 GCL placed: 0 sf daily, 307,372 sf cumulative.
- Phase 1 Geomembrane: 0 sf daily, 307,372 sf cumulative
- Phase 1 Geocomposite: 0 sf daily, 307,372 sf cumulative.
- Phase 1 Geotextile: (0) sf daily, 69,340 sf cumulative.
- Phase 2 GCL placed: (0) sf daily, 423,468 sf cumulative.
- Phase 2 Geomembrane: (0) sf daily, 423,468 sf cumulative.
- Phase 2 Geocomposite: 65,000 sf daily, 205,000 sf cumulative.

HEALTH & SAFETY

Description of Health & Safety Actions Taken Today / Safety Inspections Conducted

Entact H&S Tailgates

Safety Topic: Eastside: Heavy equipment traffic.

Safety Topic: CAMU, Day: Safety while working on slopes, don't work below roller attachments or rolls of liner, continued. Also site traffic.

Night shift: Proper speeds, Friday night watch for drunk drivers..

Safety Incidents: None.

Dust Incidents: None.

CONSTRUCTION QUALITY ASSURANCE & QUALITY CONTROL

Description of Quality Control Actions Taken Today / Quality Inspections Conducted

Daily CQA Summary Page 1 of 1

Monitored installation of operations fill in phase II. Night shift...

Monitored installation of geocomposite in Phase II.

Monitored backfilling of NE Basin.

Continue review of and updating of project documents and database to facilitate reporting.

Inventory the delivery of 22 rolls of geomembrane.

Monitored subgrade preparation at the North BMI Landfill.

ISSUES AND/OR ITEMS OF DISCUSSION

Discussion of Issues / Concerns / Conversations / Topics

CAMU: Brian Rakvicka, NDEP, Mark Eizman, ASW, Devin Gordon, McGinley site visit on Eastside.

SITE VISITORS

[illegible]

Report Prepared By / Title	Date Prepared	Signature
----------------------------	---------------	-----------

Dick Laubinger, Construction Manager 21-Nov-08

Date Prepared _____ Signature _____

21-Nov-08

Signature _____

Basic Remediation Company

875 West Warm Springs Road
Henderson, Nevada 89011

DAILY PRODUCTION & QUALITY CONTROL REPORT

Project No./Contract No.	Project Title / Location	Day of Report	Report No.
6389 0	BRC Eastside Common Areas Soils Remediation 0	21-Nov-08	138

DAILY PHOTO LOG

Photo 1



CAMU: Geocomposite and HDPE LCRS pipe installation.

Photo 2



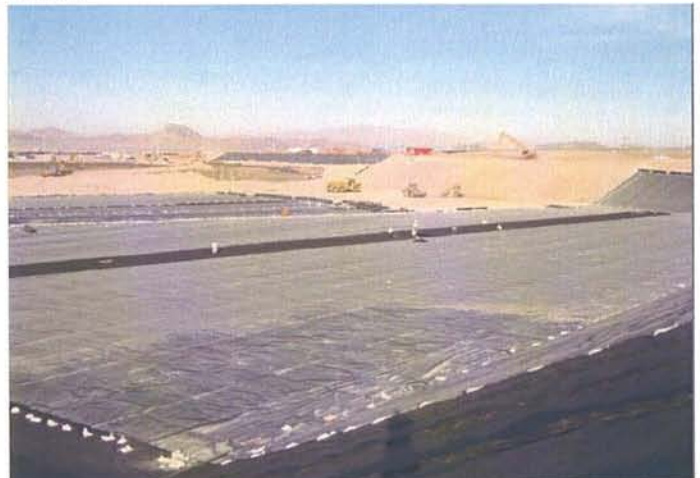
CAMU: Phase II, Southwest, welding HDPE LCRS drainage pipe.

Photo 3



CAMU: Geocomposite installation and operations layer soils.

Photo 4



CAMU: Phase II East slope preparation for liner.