

DAILY PRODUCTION & QUALITY CONTROL REPORT

Project No./Contract No.	Project Title / Location	Day of Report	Report No.
6389	BRC Eastside Common Areas Soils Remediation	22-Dec-08	165

PROJECT POINTS OF CONTACT

Position	Name	E-Mail Address	Phone No.
BRC PROJECT MANAGER	Lee Farris	lfarris@landwellco.com	702-567-0400
BRC PROJECT MANAGER	Ranajit Sahu	sahuron@earthlink.net	702-567-0400
CONST. PROJECT MANAGER	Dan Brennecke	Dan.Brennecke@westonsolutions.c	970-260-5886
Construction Manager	Richard Laubinger	Richard.Laubinger@westonsolution	720-641-8660

WEATHER CONDITIONS

Conditions				Temp (°F)	Wind	Add'l Readings	
AM	Sunny / Partly Cloudy	PM	Sunny / Partly Cloudy	Low 39 High 58	W 12mph	Precip. (in/day)	Humidity (%)
Additional Weather Comments: None							

ON-SITE WESTON PERSONNEL

Name	Position	Trade / Work Performed	Y/N
Dick Laubinger	Construction Manager	Construction Management Services.	N
Dan Brennecke	Project Manager, CM	Construction Management Services.	Y
Richard Davis	Project Engineer	Construction Management Services.	Y
Chris White	Assist. Const. Mgr	Construction Management Services.	Y
Wayne Hodgson	Assist. Const. Mgr	Construction Management Services.	Y
Kevin Cooke	Assist. Const. Mgr	Construction Management Services.	Y
June Laubinger	Admin Assistant	Construction Management Services.	N

ON-SITE GEOSYNTEC PERSONNEL

Name	Position	Trade / Work Performed	Y/N
Greg Corcoran	Design Engineer	Oversight	N
Dan Street	QA Manager	Oversight	Y
Jim Cox	QA/QC Supervisor	Oversight	N
Robecca Flynn	Engineer	Oversight	N
Wayne Wofford	QA/QC Tech	Oversight	Y
Roland Derosier	QA/QC Tech	Oversight	Y
Camon Liddell	QA/QC Tech	Oversight	Y
Jeremy Osborn	QA/QC Tech	Oversight	Y

ON-SITE SUPPORT PERSONNEL

Name	Position	Trade / Work Performed	Y/N
Doug Herlocker, Tetra Tech	Air Monitoring Specialist	Air Monitoring, Set up new areas at CAMU	N
Becky Dano, Tetra Tech	Air Monitoring Specialist	Air Monitoring,	Y
Jerry Fauchaux, Tetra Tech	Air Monitoring Specialist	Air Monitoring	N

OVERSITE PERSONNEL

Name	Position	Trade / Work Performed	Y/N
Mark Elzman, ASW	Inspector	Liner Inspector	Y
Devin Gordon, McGinley	Oversight	For NDEP	Y
Dock Kim, ATC	Field Observation	For AIG	Y
Joe Ludlow, ASW	Inspector	Liner Inspector	N
Steve Morrow, ASW	Inspector	Liner Inspector	N
Brian Rakvica	Inspector	NDEP	N
PBS&J, Survey	Surveyors	Surveying, QA	N

ON-SITE CONTRACTOR PERSONNEL

Name	Company	Trade / Work Performed	Y/N
Erik Geringer	Entact	Project Manager	N
Josh Carrol	Entact	Asst Project Manager	Y
Russ Karnes	Entact	Eastside, Superintendent	Y
Michael Carlson	Entact	Engineer	Y
Joe Curilla	Entact	Health & Safety Officer	Y
Timothy Stadt	Entact	Health and Safety Technician	Y
	Entact	26 Equipment Operators & Truck Drivers	Y
Ed Long	Entact	CAMU, Superintendent	Y
Lance Bruce	Entact	Health & Safety Officer	Y
Terry Harper	Entact	CAMU, Superintendent	Y
Rick McIntire	Entact	CSP, Safety	N
Dale Walsh	Converse	CSP, Safety	N

DAILY PRODUCTION & QUALITY CONTROL REPORT

Project No./Contract No.	Project Title / Location	Day of Report	Report No.
6389	BRC Eastside Common Areas Soils Remediation	22-Dec-08	165

Eli Blackburn	Entact	Asst Project Manager	Y	
	Environmental Specialties, Inc	1 Liner Superintendent	Y	
	Environmental Specialties, Inc	12 Laborers/ Seamers	Y	
	Kenney Survey	CAMU	N	
	ABC Survey	Eastside/CAMU	N	

ON-SITE EQUIPMENT

Equipment	Vendor / Tag No.	Work Performed				
CAT D400E Dump Truck (10)		CAMU	-	-	-	-
JD D400 Dump Trucks (9)		Eastside	-	-	-	-
CAT 324D long stick excavator		CAMU	-	-	-	-
CAT D8R Dozer with disc		Eastside	-	-	-	-
CAT 345 excavator, (3)		Eastside	-	-	-	-
CAT 330 Excavator		Eastside	-	-	-	-
Case double pan scrapers.		Eastside	-	-	-	-
CAT D6 LGP Dozer (1)		Eastside	-	-	-	-
Water Trucks (2)		Eastside	-	-	-	-
637/631 Cat Scrapers (2)		CAMU	-	-	-	-
CAT 16H Grader		CAMU	-	-	-	-
CAT D-10 Dozer		CAMU	-	-	-	-
CAT Water Trucks (2)		CAMU	-	-	-	-
CAT D-6 Dozer, (2)		CAMU	-	-	-	-
CAT 14H Grader		CAMU	-	-	-	-
Gradall		CAMU	-	-	-	-
JLG		CAMU	-	-	-	-
IR Smooth drum Roller		CAMU, Phase 1	-	-	-	-
Tenent Street Sweeper		Eastside and CAMU	-	-	-	-
Bomag Smooth drum Roller		CAMU, Phase 1	-	-	-	-
Chieftain 1400 Powerscreener		Eastside, screening 1" minus	-	-	-	-

MATERIAL HANDLING (ON-SITE DELIVERY / REMOVAL)

Material	Vendor	Today	UOM	Purpose	Delivery Verification			
GCL	CETCO	0	rolls	For CAMU, On site	to date	Qty	Spec	Tags
Geocomposite	Agru	0	rolls	For CAMU, On site		506		
Geomembrane	Agru	0	rolls	For CAMU, On site		599		
						192		

WORK COMPLETED

Description of Work Executed Today

Eastside Mixing and Drying Activity:

- Day Shift:
- Mixing wet material into dry ponds
- Prepared for night haul operations
- Night Shift:
- Continued hauling material from HP-3 stockpile and PUB-4

CAMU Activity:

- Day Shift:
- ESI placed GCL and geomembrane on the North BMI Landfill
- Continued first lift push-out of 1-inch minus on the BMI North Landfill
- Continued screening at the 200,000cy stockpile and hauling to North BMI Landfill
- Continued 6" scrape on Phase IIIB
- Prepared for night haul operations.
- Night Shift:
- Continued placing material in Phase 1.

Embankment

- Phase 1 embankment, complete.
- Phase 1 estimated cumulative embankment placed: 0 cy
- Phase II embankment, complete.

Waste Placement

- Phase 1 estimated daily waste placed: 29 loads @ 20cy/load = 580cy.
- night shift placed: 267 loads @ 18cy/load = 4,806cy (18 trucks).
- Phase 1 estimated cumulative waste placed: 249,826cy. Western Ditch, NE Equilization, Eastside beta stockpile, Phase IIIB and PUA-4, PUB-3, HP-3.
- Phase 1 Operations Layer placed, completed. Cumulative total: 21,662
- Phase 2 estimated night shift placed: 0 loads @ 18cy/load = 0 cy.
- Phase 2 Operations Layer placed, daily: 0 cy. Adjusted cy per truckload from 20cy to 18cy based on survey. Cumulative total: 37,188 cy.

Geosynthetics. Estimated cumulative installed quantity by Phase.

- Phase 1 GCL placed: 0 sf daily, 307,372 sf cumulative.
- Phase 1 Geomembrane: 0 sf daily, 307,372 sf cumulative.

DAILY PRODUCTION & QUALITY CONTROL REPORT

Project No./Contract No.	Project Title / Location	Day of Report	Report No.
6389	BRC Eastside Common Areas Soils Remediation	22-Dec-08	165

- Phase 1 Geomembrane: 0 sf daily, 307,372 sf cumulative
- Phase 1 Geocomposite: 0 sf daily, 3,372 sf cumulative.
- Phase 1 Geotextile: (0) sf daily, 69,340 sf cumulative.
- Phase 2 GCL placed: (0) sf daily, 498,468 sf cumulative.
- Phase 2 Geomembrane: (0) sf daily, 498,468 sf cumulative.
- Phase 2 Geocomposite: (0) sf daily, 520,592 sf cumulative.
- BML North Landfill GCL placed: (35,200) sf daily, 365,838 sf cumulative.
- BML North Landfill Geomembrane: (35,200) sf daily, 365,838 sf cumulative.
- BML North Landfill Geocomposite: (0) sf daily, (305,000) sf cumulative.

Other: None

HEALTH & SAFETY

Description of Health & Safety Actions Taken Today / Safety Inspections Conducted

Entact H&S Tailgates

Safety Topic: Eastside: None

Safety Topic: CAMU, Day: Travel safety during the holidays

Eastside and CAMU, Dressing in layers during cold winter

Safety Incidents: None.

Dust Incidents: None.

CONSTRUCTION QUALITY ASSURANCE & QUALITY CONTROL

Description of Quality Control Actions Taken Today / Quality Inspections Conducted

Daily CQA Summary..

Monitored the Installation of geosynthetics on the North BMI Landfill
Monitored installation of waste material in Phase I on the
Monitored protective cover placement on BMI North Landfill.
Monitored the placement of Phase IIIB maerial in phase 1.
Continued review and updating of project documents and database to facilitate reporting.

ISSUES AND/OR ITEMS OF DISCUSSION

Discussion of Issues / Concerns / Conversations / Topics

None

SITE VISITORS

[illegible]

Report Prepared By / Title

Chris White, Assistant Construction Manager

Date Prepared

23-Dec-08

Signature _____

Basic Remediation Company

875 West Warm Springs Road
Henderson, Nevada 89011

DAILY PRODUCTION & QUALITY CONTROL REPORT

Project No./Contract No.	Project Title / Location	Day of Report	Report No.
6389 0	BRC Eastside Common Areas Soils Remediation 0	22-Dec-08	164

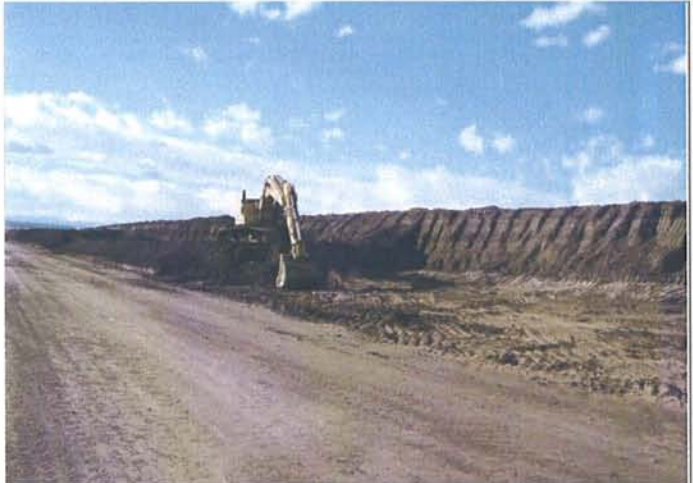
DAILY PHOTO LOG

Photo 1



East Side: Mixing wet material into the dry ponds

Photo 2



East Side: HP-3 stockpile

Photo 3



CAMU: 200,000cy stockpile, screening of 1-inch minus.

Photo 4



CAMU: BMI Landfill North, First lift push-out and sub-grade preparation.