

DAILY PRODUCTION & QUALITY CONTROL REPORT

Project No./Contract No.	Project Title / Location	Day of Report	Report No.
6389	BRC Eastside Common Areas Soils Remediation	17-Mar-09	247

PROJECT POINTS OF CONTACT

Position	Name	E-Mail Address	Phone No.
BRC PROJECT MANAGER	Lee Farris	lfarris@landwellco.com	702-567-0400
BRC PROJECT MANAGER	Ranjit Sahu	sahuron@earthlink.net	702-567-0400
CONSTR. PROJECT MANAGER	Dan Brennecke	Dan.Brennecke@westonsolutions.com	970-260-5886
Construction Manager	Richard Laubinger	Richard.Laubinger@westonsolutions.com	720-641-8660

WEATHER CONDITIONS

Conditions	Temp (°)	Wind	Add'l Readings
AM Sunny/Clear	Low 51 High 75	4mph	Precip. (in)

Additional Weather Comments

Calm to light winds.

ON-SITE WESTON PERSONNEL

Name	Position	Trade / Work Performed	Y/N
Dick Laubinger	Construction Manager	Construction Management Services.	Y
Dan Brennecke	Project Manager, CM	Construction Management Services.	N
Richard Davis	Project Engineer	Construction Management Services.	Y
Chris White	Assist. Const. Mgr	Construction Management Services.	Y
Wayne Hodgson	Assist. Const. Mgr	Construction Management Services.	N
Kevin Cooke	Assist. Const. Mgr	Construction Management Services.	Y
June Laubinger	Admin Assistant	Construction Management Services.	Y

ON-SITE GEOSYNTEC PERSONNEL

Name	Position	Trade / Work Performed	Y/N
Greg Corcoran	Design Engineer	Oversight	N
Dan Strout	QA Manager	Oversight	Y
Jim Cox	QA/QC Supervisor	Oversight	N
Robeca Flynn	Engineer	Oversight	N
Sam Campbell-Nelson	QA/QC Tech	Oversight	Y
Roland Derocler	QA/QC Tech	Oversight	Y
Camron Liddell	QA/QC Tech	Oversight	Y
Victor Heredia	QA/QC Tech	Oversight	Y

ON-SITE SUPPORT PERSONNEL

Name	Position	Trade / Work Performed	Y/N
Doug Herlocker, Tetra Tech	Air Monitoring Specialist	Air Monitoring	N
Becky Dano, Tetra Tech	Air Monitoring Specialist	Air Monitoring	Y
Jerry Fauchoux, Tetra Tech	Air Monitoring Specialist	Air Monitoring	N

OVERSITE PERSONNEL

Name	Position	Trade / Work Performed	Y/N
Mark Eizman, ASW	Inspector	Linear Inspector	Y
Devin Gordon, McGinley	Oversight	For NDEP	Y
Dock Kim, ATC	Field Observation	For AIG	N
Joe Ludlow, ASW	Inspector	Linear Inspector	N
Steve Morrow, ASW	Inspector	Linear Inspector	N
Brian Rakvica	Inspector	NDEP	N
PBS&J, Survey	Surveyors	Survey, NW basin trench remediation.	N

ON-SITE CONTRACTOR PERSONNEL

Name	Company	Trade / Work Performed	Y/N
Enk Geringer	Entact	Project Manager	Y
Jeremy Schaefer	Entact	Acting Project Manager	Y
Josh Card	Entact	Asst Project Manager	Y
Michael Carlson	Entact	Engineer	Y
Joe Cunila	Entact	Health & Safety Officer	Y
Timothy Stadt	Entact	Health and Safety Technician	Y
Ed Long	Entact	48 Equipment Operators & Truck Drivers	Y
Lance Bruce	Entact	CAMU, Superintendent	Y
Terry Harper	Entact	Health & Safety Officer	Y
Pick McIntire	Entact	CSP, Safety	N
Dale Walsh	Converse	CSP, Safety	N
Ed Blackburn	Entact	Asst Project Manager	Y
	Environmental Specialties, Inc	1 Liner Superintendent	N
	Environmental Specialties, Inc	12 Laborers/ Seamers	N
Carol McIntire	Entact	Health & Safety Officer	Y
Roger Wagner	Entact	Eastside, Superintendent, Night Shift.	Y
	ABC Survey	Eastside/CAMU, Mohawk Drive.	N
	Foundation Pile, Inc.	Demobilized.	N

ON-SITE EQUIPMENT

Equipment	Vendor / Tag No.	Work Performed				
CAT D400E Dump Truck (10)		CAMU	-	-	-	-
JD D400 Dump Trucks (9)		Eastside	-	-	-	-
CAT 324D long stick excavator		Eastside	-	-	-	-
CAT D8R Dozer with disc		Eastside	-	-	-	-
CAT 345 excavators, (5)		Eastside and CAMU	-	-	-	-
CAT 330 Excavator		CAMU	-	-	-	-
Caterpillar double pan scrapers.		Eastside, demobilized.	-	-	-	-
CAT D6 LGP Dozer (1)		Eastside	-	-	-	-
Water Trucks (2)		Eastside	-	-	-	-
JD450 Dozer		CAMU	-	-	-	-
CAT 16H Grader		CAMU	-	-	-	-
CAT D-10 Dozer		CAMU	-	-	-	-
Water Trucks (2)		CAMU	-	-	-	-
CAT D8 Dozer, (2)		CAMU	-	-	-	-
CAT 14H Grader		CAMU	-	-	-	-
Grapple		CAMU	-	-	-	-
JLG		CAMU	-	-	-	-
18 Smooth drum Roller		CAMU, Phase 1	-	-	-	-
Tenmet Street Sweeper		Eastside and CAMU	-	-	-	-
Bomag Smooth drum Roller		CAMU, Phase 1	-	-	-	-
Chieftain 1400 Powerscreener		Eastside, screening 1" & 6" minus	-	-	-	-
(1) Crane		Sheet pile driving. Installed. (1) Crane remains.	-	-	-	-

MATERIAL HANDLING (ON-SITE DELIVERY / REMOVAL)

Material	Vendor	Today	UCM	Purpose	Delivery Verification
GCL	CETCO	0	rolls	For CAMU, On site	1288

DAILY PRODUCTION & QUALITY CONTROL REPORT

Project No./Contract No.	Project Title / Location	Day of Report	Report No.
6389	BRC Eastside Common Areas Soils Remediation	17-Mar-09	247

Geocomposite	Agro	0	rolls	For CAMU, On site	2202	
Geomembrane	Agro	0	rolls	For CAMU, On site	448	

WORK COMPLETED

Remediation Work Executed Today

Eastside Mixing and Drying Activity:

Day Shift:

- Continued final scrape in PUA-5 and hauled to SW-2.
- Continued hauling and spreading wet material from SW-7 to PUG 6.
- Continued mixing and stockpiling material in SW-2.

Night Shift:

- Continued hauling material from the Beta ditch and SW-2 stockpiles.

CAMU Activity:

Day Shift:

- Continued excavating east end of Silt trench, NW-1, loading and hauling trash and gravel to Phase II.
- Continued excavating to the east in Silt trench, SW-2, loading and hauling trash and gravel to Phase II.
- Continued installation of 42", RCP storm drain piping east.
- Continued backfilling NW Detention basin remediation trench to findkey property line.
- Continued screening soils and stockpiling in berm along entrance half rd.
- Hauled and placed 1" minus soils to BM North, North slope for cover material.
- Phase IIIB continued excavating west slope and grading floor.

Night Shift:

- Continued placing material in Phase II landfill.

Embankment

- Phase 1 embankment, complete.
- Phase 1 estimated cumulative embankment placed: 0 cy
- Phase II embankment, complete.

Other:

Inspections: NW-1, Inspected and approved for backfill. The additional excavation area to the south west. Visibly clean.
NW-2, Inspected and approved for backfill.
NW-3, Inspected and approved for backfill.

Estimated Waste Placement (Estimated volumes do not account for shrinkage due to loss of moisture on wet ponds)

Phase I

Previous Daily Cumulative =	291,200	cy
Operations layer placed (completed) for liner certification. = 21,662	0	cy
Daily Day shift waste placed today: Phase IV,V scape & Phase IIIB trench excavation. 0 loads @ 20 cy/load (0 trucks) =	0	cy
Daily Night shift placed today: 0 loads @ 18cy/load (0 trucks) =	0	cy
To Date Phase I estimated cumulative waste placed =	291,200	cy

Phase II

Previous Daily Cumulative =	415,076	cy
Operations layer placed (completed) for liner certification. = 37,188	0	cy
Daily Day shift waste placed today: NW Basin (0) loads @ 18 cy/load (0) trucks =	0	cy
Daily Day shift waste placed today: Silt Trenches, (119) loads @ 18cy/load (5) trucks =	2,142	cy
Daily Night shift placed today: (285) loads @ 18cy/load (20) trucks =	5,130	cy
To Date Phase II estimated cumulative waste placed =	422,348	cy

Phase IIIA

Previous Daily Cumulative =	21,492	cy
Operations layer placed directly in Phase IIIA today: (0) loads @ 18 cy/load (0) trucks =	0	cy
Operations layer staged in Phase IIIA for day placement (ongoing) for liner certification: (0) loads @ 18 cy/load (0) trucks =	0	cy
Daily Day shift waste placed today: (0) loads @ 18 cy/load (0) trucks =	0	cy
Daily Night shift waste placed today: (0) loads @ 18cy/load (0) trucks =	0	cy
To Date Phase IIIA estimated cumulative waste placed =	21,492	cy

Cumulative Total To Date All Phases =	735,040	cy	Estimated Waste at Completion (cy)	2,050,000	% Complete	35.9%
--	----------------	-----------	---	------------------	-------------------	--------------

Geosynthetics Placed

Phase I (complete)	Previous	Placed	Cumulative
GCL	307,372	0	307,372
Geomembrane	307,372	0	307,372
Geocomposite	307,372	0	307,372
Geotextile	69,340	0	69,340
Phase II (complete)	Previous	Placed	Cumulative
GCL	498,468	0	498,468
Geomembrane	498,468	0	498,468
Geocomposite	520,592	0	520,592
Geotextile	0	0	0
Phase IIIA	Previous	Placed	Cumulative
GCL	221,000	0	221,000
Geomembrane	221,000	0	221,000
Geocomposite	221,000	0	221,000
Geotextile	20,000	0	20,000
Phase IIIB	Previous	Placed	Cumulative
GCL	0	0	0
Geomembrane	0	0	0
Geocomposite	0	0	0
Geotextile	0	0	0
Phase IV	Previous	Placed	Cumulative
GCL	0	0	0
Geomembrane	0	0	0
Geocomposite	0	0	0
Geotextile	0	0	0
Phase V	Previous	Placed	Cumulative
GCL	0	0	0
Geomembrane	0	0	0
Geocomposite	0	0	0
Geotextile	0	0	0

Basic Remediation Company

875 West Warm Springs Road
Henderson, Nevada 89011

DAILY PRODUCTION & QUALITY CONTROL REPORT

Project No./Contract No.	Project Title / Location	Day of Report	Report No.
6389 0	BRC Eastside Common Areas Soils Remediation 0	17-Mar-09	247

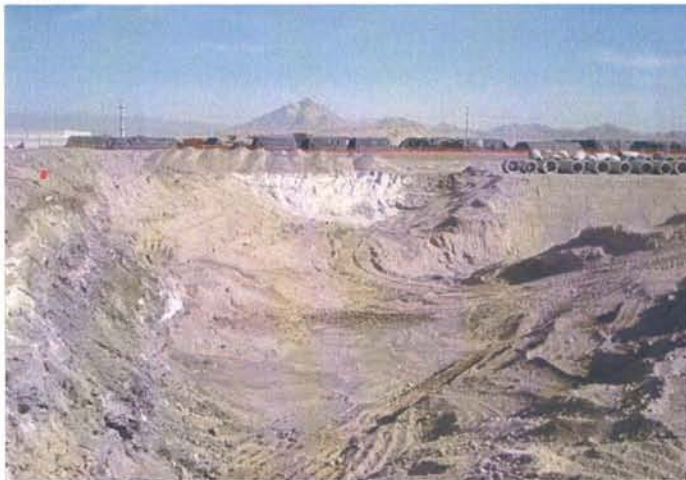
DAILY PHOTO LOG

Photo 1



Eastside: Phase IIIB.

Photo 2



Eastside: Additional waste at west end and north.

Photo 3



CAMU: NW-3

Photo 4



CAMU: NW-3.